

Livestock market and auction news

Central U.S. Carlot

Wednesday, June 30

Report supplied by USDA

Compared to Tuesday's 4:00 p.m. report: Choice steer and Heifer beef 1.00-2.50 lower, Good steady to 1.00 lower. Demand and trading light to moderate for moderate supplies. Processors continue bearish, but packers showing signs of firmness.

The Boxed Beef carcass cutout value declined \$1.34 to an estimated 110.19 per cwt.

Sales reported on 128 1/2 loads of steer and heifer beef.

STEER BEEF

89 1/2 Loads

FOB Omaha Basis

Choice 3: 700-900 lbs. 106.50-107.50, late 106.50-107, 1.50-2.00 lower. Choice 3 600-700 lbs. 105.00-106.50, late 105.00, 2.50 lower. Choice 4 600-900 lbs. 99.00-100.00; Good 2-3 600-900 lbs. 101.50-102.00, mostly 102.00, steady-1.00 lower.

Choice 3 600-900 lbs. 100.00-100.50 (Hols. Type)

FOB Amarillo Basis

Choice 3 600-700 lbs. 108.00. Choice 3 600-700 lbs. 107.75-109.00. Choice 2 600-700 lbs. 109.00. Choice 2 600-700 lbs. 108.75-110.00. Good 2-3 600-700 lbs. 103.00-104.00.

HEIFER BEEF

39 Loads

FOB Omaha Basis

Choice 3: 550-700 lbs. 103.00-104.00, late 104.00, 2.00 lower.

Choice 3: 500-550 lbs. 100.00, 1.00 lower.

Choice 3: 400-500 lbs. 98.00, 1.00 lower.

Good 2-3: 550-700 lbs. 96.00-98.00, mostly 97.00-98.00, steady 1.00 lower.

FOB Amarillo Basis

Good 2-3 600-700 lbs. 101.00.

Includes moderate to high percentage Y.G. 2's.

PRIMAL BEEF CUTS

2 Loads

FOB Omaha Basis

Fores 130-210 lbs. 90.00.

BONELESS PROCESSING/ BEEF TRIMMINGS

64 Loads

FOB Omaha Basis

90% Chem. Lean Fresh 112.00-113.00

85% Chem. Lean Fresh 107.00

75% Chem. Lean Fresh 96.50

50% Chem. Lean Fresh 58.00-61.00, bulk 59.00

50% Chem. Lean Fresh 62.00 boxed.

FOB Amarillo Basis

50% Chem. Lean Frozen 60.00

Compared to Tuesday's 4:00 report: Fresh pork loins 14-17 lbs. 1.00 lower, 22/up lbs. steady to 2.00 higher. Picnics 4-8 lbs. 2.25 lower.

Fresh hams 17-26 lbs. 6.00-7.00 lower. Sdls Bellies 10-14 lbs. steady to .50 lower, 16-18 lbs. 2.00 higher.

Pork trimmings and boneless processing pork 1.00-2.00 lower.

Trading moderate as demand light. Offerings heavy for loins and hams.

Sales reported on 45 loads plus 15 loads of trimmings.

FRESH PORK CUTS

LOINS: 14-17 lbs. 118.00-119.00, 1.00 lower; 14-17 lbs. 118.00, LD 118.50 frozen; 17-22 lbs. 109.50-111.50, 1.00-2.00 higher, 22/up lbs. 98.50 steady.

PICNICS: 4-8 lbs. 63.00, 2.25 lower.

BOSTON BUTTS: 4-8 lbs. 105.50.

SPARERIBS: 3.5-5.5 lbs. 150.50.

SKINNED HAMS: 17-20 lbs. 85.00-88.00, late 85.00, 6.00-7.00 lower. 20-26 lbs. 85.00-89.00, late 85.00, 7.00 lower.

BELLIES, SDLS: 10-12 lbs. 74.00, steady; 12-14 lbs. 77.50, .50 lower; 16-18 lbs. 79.50 2.00 higher; 20-25 lbs. 68.50 Frozen.

PORK TRIMMINGS

BONELESS PROCESSING PORK (Chemical Lean)

42% lean trimmings fresh, 58.00-58.50, late 58.00 1.00 lower.

72% lean trimmings fresh, 87.50-88.00. 1.50-2.00 lower.

72% bnl picnics fresh, 91.00.

72% bnl picnics frozen, 96.00.

Skinned jowls fresh 54.00.

Westminster Livestock Auction

Westminster, Md.

Tuesday, June 29

Report supplied by auction

BUTCHER COWS: Large run, Active! \$1.00 higher. High yield 46.00-47.00, one to 50.50. Standard & Utility 42.00-46.00. Canners 39.00-

42.00. Shelly \$40 down. Good run bulls several high yielding 55.00-56.25, Good 52.00-55.00. Fed steers prime to 71.00, Choice 66.00-69.00, Good-Low Choice 63.00-66.00. Fed Heifers Good to Choice 60.00-62.00, Commercial 55.00-57.00.

BUTCHER HOGS: Steady prices. US 1-3 215-240 lb. 59.00-60.10, 195-210 lbs. 58.00-59.00, 280-300 lbs. 53.00-55.00. Sows few offered 400-450 lb. 49.00-51.00. Boars 300-400 lb. to 44.25.

VEAL CALVES: Demand weaker due to upcoming holiday. Good & Choice 75.00-90.00; Standard & Good 60.00-75.00; Killers 80-100 lbs. 55.00-62.00; Weak & Rough 55.00 down.

CALVES RETURNED TO FARM: Holstein heifers few 90-125 lb. 80.00-98.00. Holstein bulls bulk 95-120 lbs. 65.00-75.00, few to 79.00. Beef type 80-120 lb. 65.00-80.00.

LAMBS: One lot Choice 94 lb. at 54.00, Good to Choice 75-90 lbs. 44.00-48.00.

STOCK CATTLE: Light run. Steers medium 300-700 lb. 48.00-53.00. Good 700-950 lb. 55.00-62.50. Heifers Good 45.00-50.00. Bulls medium 41.00-48.75.

PIGS AND SHOATS: Mainly light pigs offered. By the head 15-30 lb. 16.00-30.00, 30-45 lb. few lots 39.50. By the Lb. 100-150 lb. 53.00-56.00. St. Boars 200-240 lb. 44.00-46.00.

Middleburg Auction

Middleburg, Pa

Tuesday, June 29

Report supplied by the Auction

CATTLE 304: Choice slaughter steers 68.00-70.85, Good 65.00-69.10, standard 55.00-65.00, Utility 47.25-55.00. Choice Slaughter Heifers 62.50-68.85, Good 59.00-62.70, Standard 52.00-58.00, Utility 48.00-52.00. Utility & Commercial slaughter cows 46.00-49.50, Cutters 44.00-48.75, Canner and Low Cutters 38.00-44.00, Shells down to 34.50. Choice slaughter bullocks 61.00-64.85, Good 56.00-61.00. Yield Grade #1, 1200-1990 lbs. slaughter bulls 56.00-63.50, #2, 800-1200 lbs. 46.35-56.00.

CALVES 165: Choice vealers 70.00-88.00, Good 60.00-70.00, Standard & Good 90-110 lbs. 60.00-70.00, 70-90 lbs. 40.00-60.00. Farm Calves: Hol. Bulls 90-130 lbs. 65.00-96.00; Hol. Heifers 80-150 lbs. 70.00-102.00.

HOGS 682: (Mon. 6-28-82) US No. 1-2 210-235 lbs. barrows and gilts 62.25-63.85, No. 1-3 190-250 lbs. 61.50-62.25, No. 2-3 190-270 lbs. 60.25-61.50. US No. 1-3 300-600 lbs. sows 51.75-57.25, No. 2-3 300-600 lbs. 46.50-50.50. Boars 225-800 lbs. 47.00-55.00.

FEEDER PIGS 339: US No. 1-3 10-20 lbs. feeder pigs 25.00-35.00 per head, No. 1-3 20-40 lbs. 35.00-53.00, No. 1-3 40-50 lbs. 53.00-57.50 per head.

SHEEP 36: Good spring slaughter lambs 45.00-57.00. Slaughter ewes 15.00-28.00.

STILL #1 Big Dutchman - the Original

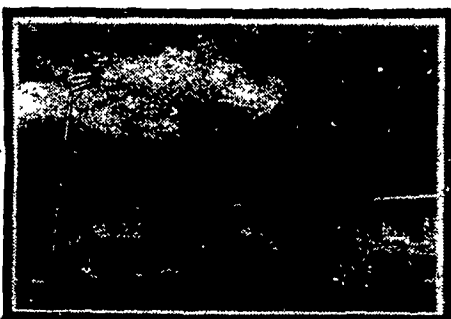


Big Dutchman cage systems are the "standard" by which all others are measured. So why not start your cage shopping with the No. 1 company in the field.

We can provide "all" the components that make up a complete cage system and therefore are able to guarantee reliability, control, cost savings and one-source service.

And remember, once your Big Dutchman system is completed, the competently trained staff of Hershey Equipment Company will continue to service it and provide spare parts at DISCOUNTED prices as it has been for over fifteen years.

HERSHEY EQUIPMENT COMPANY, "WE SELL THE BEST & SERVICE THE REST"

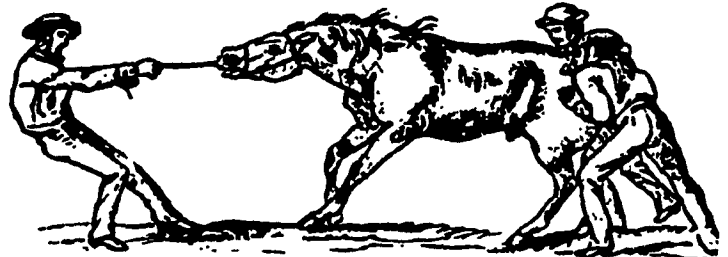


HERSHEY EQUIPMENT COMPANY, INC.

SYCAMORE IND. PARK
255 PLANE TREE DRIVE
LANCASTER, PA. 17603
(717) 393-5807

Route 30 West at The Centerville Exit

Designers of Quality Systems for Poultry, Swine and Grain Handling



HORSE TAMING & BREAKING Explained In Detail

★ Come & See A Colt Breaking Demonstration ★

Break your colt of bad habits
Learn how to drive your colt without bridle or bit

Owen Brumbaugh, horse trainer from Camden, Ind., author of the book "Training the Buggy Horse and Training the Driver", is in this area and will demonstrate horse breaking. We also break riding, and draft horses or mules. We break balkers, kickers, race crazy, traffic shyers, and green colts. This is not a rodeo. This is a demonstration and instructions on how to handle your horse to get the most out of him. How to break him so as to avoid bad habits, and how to break him of already-formed bad habits.

FRIDAY, JULY 9 and SATURDAY, JULY 10
5-8 PM 9-12 AM 1-4 PM

ALVIN LAPP FARM

17 MILES EAST OF LANCASTER - BUENA VISTA ROAD Route 340 to School Lane Road, turn South to first road right, first lane right. Light Lunch Available Saturday.

MONDAY, JULY 12
9-12 AM 1-4 PM

STEVEN STOLTZFUS FARM

2 MILES WEST OF NEW HOLLAND - BRICK CHURCH ROAD Route 23 to North Groffdale Road - 2nd Road Left, 1st lane left. Light Lunch Available

TUESDAY, JULY 13
1-4 PM 5-8 PM

ABRAM STOLTZFUS FARM

10 MILES EAST OF LANCASTER - STUMPTOWN ROAD. From Leola, Route 772 3 Miles East to Ressler's Mill - Turn Left, 1st Farm Right

WEDNESDAY, JULY 14
9-12 AM 1-4 PM

IVAN STOLTZFUS FARM

MIDWAY BETWEEN CHURCHTOWN AND MORGANTOWN - SHRKTOWN ROAD Route 23, turn South at Twin Valley Bible Chapel - 1st Farm Left
Light Lunch Available

SATURDAY, JULY 17
9-12 AM 1-4 PM

REUBEN G. STOLTZFUS FARM

3 MILES SOUTH OF MYERSTOWN - REISTVILLE ROAD Route 501 to Reistville - West on Reistville Road, 1/4 Mile on Left.
Light Lunch Available

Each Session Lasts About 3 Hours
Bring a neighbor - help spread the word.
Admission: \$3 or \$1.50 for children 10-15