

FARM EQUIPMENT

FARM EQUIPMENT

FARM EQUIPMENT

FARM EQUIPMENT

FARM EQUIPMENT

FARM EQUIPMENT

FARM EQUIPMENT

## PUMPS

IRRIGATION - WASTE WATER - MANURE - INDUSTRIAL

New - Used

Diesel, PTO, Electric, Gasoline

### REYNOLDS ALUMINUM PIPE

Irrigation, Repairs & Gaskets for:  
RACE, WOSCO, WADE, IRRECO,  
CHAMPION, SHUR-RANE, McDOWELL,  
A-M AND OTHERS

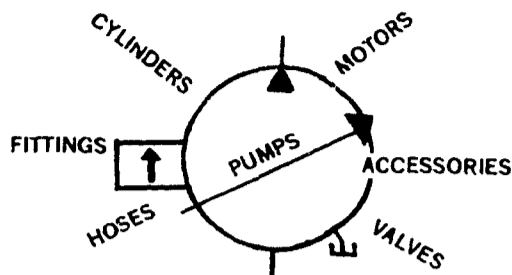
SPRINKLERS: Rainbird, Skinner &  
Buckner

Good rebuilt GORMAN-RUPP PTO  
pump, also used Hale, CMC, Marlow,  
Peerless-Electric

## EECO, INC.

4021 N 6th St., Harrisburg, PA 17110  
717-238-9423

## HYDRAULICS



Wholesale and Retail  
SALES - SERVICE - INSTALLATIONS  
(Hydrostatic Transmission Repairs)

Let us do your trouble  
shooting and system designing  
WILL TRAVEL

### Beiler Hydra-Matics

Hydraulic & Air Supplies  
Box 587 RD #3 New Holland, Pa.  
UPS Service (717-656-2846)

## RINGTOWN FARM EQUIPMENT

### NEW EQUIPMENT

- 5088
- 3288 w/air
- Hydro 84 RC
- 584 RC
- 284 D
- 1420 combine
- 770 deep till disc
- 370 disc
- 401 harrow 12'
- 720 plow 5 btm auto
- 720 plow 4 btm
- 2250 loader
- 45 vibre shank
- 4500 vibre shank
- 5500 chisel plows
- 41 cultmulchers
- Dunham Lehr
- 40 cultmulcher
- Dunham Lehr
- 1302 Holland trans-planter
- Gyrostar, tedder and rake
- C-80 Woods mower

- M-5 Woods mower
- Woods scraper blades
- 445 Utah potato harvester

### USED EQUIPMENT

- Farmall 656 D
- IH 424
- Super AV
- IH potato planter
- IH 56 corn planter
- IH 455 corn planter
- 45 vibre shank
- Howard sub soil
- NH 352 grinder
- NH L35 skid steer
- Haines bulk bodies
- Potato Washers
- Mayrath auger, 6"x27"
- 1500 Schwartz loader
- Meyers 400 gal spray
- Troyer elevator
- Howard Roto Vator 100"

### NEW EQUIPMENT

- 315 baler
- 310 baler w/thrower
- 489 mower cond.
- 488 mower cond.
- 519 spreader
- L 445 skid steer
- 442 disc mower
- 258 rake
- 256 rake
- 38 chopper
- 782 harvester

RD 1, Ringtown, PA  
717-889-3184

Your Full Service Dealer

## FORAGE WAGON REPAIRS AND PARTS

Wood Mill Corp. repairs all makes of forage wagons. We can supply anything from fully assembled/painted sides, floors, tails/roofs to replacing main or cross members or pieces of sides, floors or tails. We can supply new roof sheets for you to install or do the complete job. We make forage wagons for the major companies and we have wood parts in stock.

Free Estimates

## WOOD MILL CORP.

R.D. 1, Farmersville Rd.  
New Holland, PA 17557  
717-354-4919

See Us About IH  
Purchasing Programs.

### SPECIAL PRICES!

- 200 2 row cultivator (new) \$700
- Cultivator for Farmall C \$135
- IH 4 row 3 pt cultivator \$975
- IH 4 row 3 pt cultivator \$795

### USED EQUIPMENT:

- 1086 tractor w/cab & air \$22,500
- Farmall M \$1650
- MF 65 diesel w/industrial loader \$4750
- Farmall Cub w/cult plow & blade \$4175
- IH 715 combine \$15,900
- IH 403 Combine w/2 heads \$9500
- IH 710 5x16 plow \$3850
- JD 4x16 3 pt mtd plow \$625
- JD 12' Mtd Vibra Shank harrow \$1550
- IH 45 vibre shank, 26 1/2' hyd \$3500
- Miller disc, 10', as is \$1995
- w/new discs installed \$4250
- IH 400 Cyclo 4 row planter \$3450
- IH 400 Cyclo 4-row planter \$2975
- IH 56 4 row planter \$1750
- IH 455 4 row planter \$1450
- Pincor alternator with trailer \$1495
- Fox blower \$750
- Pick up head for 720 harvester \$995
- IH 430 baler w/thrower \$2950
- IH 37 baler w/thrower \$1695
- AC 303 baler w/thrower \$1295
- IH 863 6x30 corn head \$7350
- Hesston PT12 mower-cond \$1200
- Fox 2200 forage harvester w/2 heads \$2800
- #10 single disc drill \$2300
- IH 1050 grinder-mixer \$1775
- 3' harrow sections for garden tractors \$35 ea.
- IH 350 12' disc \$1100
- IH 1650 Cub cadet w/mower \$2695
- IH 124 Cub cadet \$1395
- IH 127 cadet \$1525
- 44C mower, like new \$355
- 50A mower, very good \$300

### NEW EQUIPMENT

- WHITE -
- 2-55 Tractor
- 2-110 Tractor w/Cab
- 2-155 Tractor w/Cab
- 508 5-Bot SAR Plow
- 588 5-Bot SAR Plow
- 378 Rear Mtd 4-Row Vibra Tine Cultivator

- NEW IDEA -
- 213 Spreader w/Single Beater
- 244 Spreader
- 245 Spreader
- 107 Spreader
- 325 Cornpicker
- 406 Rake
- 279 Cutditcher

- GEHL -
- 3510 Skid Loader
- FB99 Blower
- BU 960 Forage Box

### USED EQUIPMENT

- White 5400 4-Row Air Planter w/No Till & Dry Fert
- Oliver 252 Disk, 11'6" Reconditioned
- JD Semu Mtd Hyd Reset 5-Bot 16" Plow
- NI 214 Spreader, 3 Beater

## MILLER EQUIPMENT CO.

RD 1 Bechtelsville, PA  
215-845-2911



### FOR SALE

- SAME Saturno 80-80 hp, 4 WD tractor, 920 hrs, w/Hardy loader, \$11,985
- Case tractor, 870, 12 spd, ps trans., good cond, \$6600
- JD B w/power trol & cultivator, \$825
- Badger 14' 3 btr forage wagon, \$1100
- Coby 14' 3 btr forage wagon w/roof, \$1575
- Taylorway 3 pt, 7 shenk, chisel plow, \$795
- Model 270 NI cut-ditcher, new flails, good condition, \$1,690
- Brady model 700 7 shank 3 bar chisel plow w/gauge wheels, new twisted shovels, \$1250
- NH model 516 spreader, 3 btr., exc cond., \$2,485
- Badger model 205-205 bu spreader w/2nd beater, in new cond \$2785
- Danuser model BMBH front mounted post driver, exc cond \$925
- NI forage blower, model 620, 54" fan, good cond \$875

HEISEY FARM EQUIPMENT, INC.  
RD 1 Jonestown, PA  
717-865-4526

## ON OUR LOT TODAY... ON YOUR FARM TOMORROW

See us about immediate delivery on these Used John Deere Machines

- JD 4020 diesel, tricycle front end, repainted and ready to go.
- JD 3020 gas, tricycle front end.
- JD 2510, gas, tricycle front end.
- JD 2520, diesel, wide front end, just overhauled.
- AC 7060, wide front end, duals, cab and air conditioning.
- Case 730 gas, narrow front end.
- IHC-344, side front end, side-mounted mower.
- IHC 300

OXFORD GREENLINE, INC.  
RD 1, Oxford, PA

PAGE 215-932-2753  
215-932-2754

Hours  
7:30 A.M. - 5:00 P.M. thru Fri.  
7:30 A.M. - 12:00 P.M. Sat.

John Deere design, dependability and dealers make the difference



## TRIPLE H EQUIPMENT

Peach Bottom, Pa.

717-548-2640 or 717-548-2094

### NEW VERMEER SUPER SERIES BALERS

Call For Spring Terms

- 2-504F baler
- 1-605F Baler
- 1-MC 9 mower-cond., \$6470
- 1-F100 bale feeders, \$2495
- 3-504G balers
- 2-SR 1200 Irrigation Travelers - \$19,000 ea.

### NEW VICON EQUIPMENT

Spreaders from 400 to 2400 lbs. in stock  
Cash Discount on '81 Prices

- 2-PTO tedder - rake
- 2-5 wheel 3 pt. hitch rake
- 1-8 wheel V-rakes
- 1-6 Wheel Rake
- 1-8' 3 pt. hitch disc mower
- 1-RP 1200 Round Baler
- 2-8' Mower Conditioner

### NEW HAYBUSTER EQUIP.

- 1-Tye 3 pt. no till drill
- 1-Bale Buster for mulching lg. round bales

### MISC. NEW EQUIP.

- 2-Kelly log splitters engine drive
- 1-1450 lb. fert. spreader, \$780

### LAHMAN SKID STEER LOADERS

- 1-23 hp, 2 buckets, \$6200

### USED & DEMO EQUIP.

- 1-Vicon 15' power harrow, demo - \$6000
- 1-Vicon 8' mower conditioner, used - \$5000 ea.
- 1-504C Vermeer Round Baler - \$3800
- 1-Oliver 7B Plow - \$1300
- 2-IH Rakes

## INCH EQUIPMENT CO.

Dalmatia 717-758-3021  
717-758-6491

35 miles North of Harrisburg, PA on Rt 147



• UPS Service Available

## WISCONSIN Heavy-Duty ENGINES

6 to 65 H.P.

AUTHORIZED SERVICE CENTER  
COMPLETE REBUILDING -  
LARGE PARTS INVENTORY  
LINCOLN & SCOTT PORTABLE  
D.C. WELDERS

135-175-200-225 amp.

## FISHER ENGINE SERVICE

717-768-3729

Amos L. Fisher  
3141 Old Phila. Pike

Bird-in-Hand, PA  
17505

