

# Livestock market and auction news

## Lancaster Co. Weekly

(Continued from Page A2)

high Good and low Choice 150-200 lbs. 70.00-80.00, few 80.00-90.00, 120-150 lbs. 65.00-75.00, 80-115 lbs. 54.00-65.00, 60-75 lbs. 42.00-52.00.

SLAUGHTER CALVES: Good and Choice 215-425 lbs. 50.00-64.00.

RETURNED TO FARM: Bulk 90-120 lb. holstein heifers 100.00-127.00, few 80-85 lbs. 64.00-75.00; bulk 95-125 lb. holstein bulls 78.00-86.00, few 80-90 lbs. 70.00-85.00

Chambersburg Auction  
Chambersburg, Pa.  
Thursday, June 17

Report supplied by PDA

CATTLE: 430. Compared with last week's market: Slaughter steers Good & Choice steady to 1.00 lower, Standard steady to 75

higher; SI. cows 1.25-3.00 lower; SI. bulls about steady. SI. steers: Choice No. 2-4 1050-1325 lbs. 67.50-70.50, Good 59.00-66.25; Standard 54.00-60.00. SI. heifers: Choice 63.00-69.75; (few) Good 63.00-62.50; (few) Standard 52.00-55.00. SI. cows: Utility & Commercial 43.75-48.75; Cutters 41.50-45.00; Canner & L. Cutter 36.00-41.50; Shells down to 32.25. SI. bullocks: (few) Good 55.00-55.60. SI. bulls: Yield Grade No. 1 & 2 940-1750 lbs. 49.35-57.25, mostly 50.00-54.00.

FEEDER CATTLE: Steers, (few) Medium Frame No. 1, 350-750 lbs. 50.50-58.00.

CALVES: 515. Vealers uneven. Choice 72.00-95.00, mostly 75.00-90.00; Good 66.00-74.00; Standard & Good 70-100 lbs. 56.00-68.00; Utility

50-85 lbs. 40.00-55.00.

FARM CALVES: Hol. Bulls 90-130 lbs. 67.00-90.00; Hol. Heifers 80-150 lbs. 75.00-105.00.

HOGS 33. One lot No. 1-3 215 lbs. at 60.25; US No. 1-3 300-520 lbs. 50.25-53.00. (few) Boars 45.75-46.25.

FEEDER PIGS 85. US No. 1-3 20-40 lbs. 33.00-43.00 per head; No. 1-3 50-85 lbs. 46.00-62.00.

SHEEP: 26. lot Choice 95 lbs. at 55.00; (few) Good 50-70 lbs. 42.00-45.00.

Belleville Auction  
Belleville, Pa.

Wednesday, June 16

Report supplied by PDA

CATTLE 87: Compared with last Wednesday's market, slaughter

cows steady to .50 higher. Individual Good slaughter steer at 55.50, one Standard at 54.85. Utility and Commercial slaughter cows 43.00-47.75, couple 49.50, Cutters 40.50-43.50, Canner and Low Cutters 38.00-40.50, Shells down to 36.35. Individual Good slaughter bullock at 51.00. Individual Yield grade #1, 1350 lbs. slaughter bull at 51.00.

CALVES 129: Few Choice vealers 69.00-84.00, Standard and Good 70-100 lbs. 50.00-60.00, few Utility 50-85 lbs. 38.00-50.00. Farm Calves: Holstein Bulls 90-125 lbs. 57.00-97.00; few Holstein Heifers 80-130 lbs. 63.00-97.00.

HOGS 176: Barrows and gilts 1.00-2.50 higher. US No. 1-2 205-240 lbs. barrows and gilts 62.00-62.50, No. 1-3 200-250 lbs. 61.10-62.10. US No. 1-3 270-570 lbs. sows 48.25-53.25.

Few Boars 42.00-51.00.

FEEDER PIGS 345: US No. 1-3 20-35 lbs. feeder pigs 34.50-45.50 per head, No. 1-3 35-50 lbs. 42.00-53.00, lot No. 1-3 70 lbs. at 59., lot No. 1-3 100 lbs. at 73.00 per head.

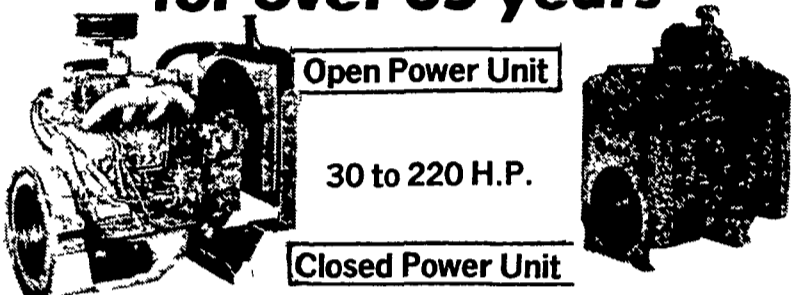
SHEEP 48: Choice 55-115 lbs. spring slaughter lambs 55.00-73.00. Slaughter ewes 11.50-27.50.

GOATS 22: Large 20.00-52.50 per head, Kids 11.00-25.00 per head. HOLSTEIN DAIRY COWS 570.00-1270 per head.

IT'S MAGIC  
How quickly  
You Get Results  
From Our  
Classifieds!

PHONE  
717-394-3047  
or 717-626-1164

## WHITE ENGINES Powerful Performers for over 65 years



Open Power Unit

30 to 220 H.P.

Closed Power Unit

Ideal for shops, agricultural generator sets, equipment, etc.

You Can Bank on White Engines  
Quality and Performance

Let Us Know Your Service Problems  
24 Hour Service - Check Our Prices

DISTRIBUTOR:

HOOVER DIESEL SERVICE

PH: 717-656-6133

2998 West Newport Rd.

Ronks, Pa. 17572

2 1/2 mile East of Leola - Along 772

DEALER INQUIRIES INVITED

DEALER:

B.B. DIESEL SERVICE

PH: 717-786-2173

RD 3, Quarryville, Pa.

2 miles west of

Georgetown on

Furnace Road

## LIQUID FERTILIZER And LEAF HOPPER SPRAY

With One Application On  
Your Alfalfa

With our new liquid blending plant  
we can blend the proper analysis  
your alfalfa needs.



Call  
Us  
Today



and find out how competitive  
our fertilizer prices can be.

(717) 397-0035

**Forry's**  
**AG SERVICE**  
Lancaster, Pa.



## HOWDY MR. HOG FARMER...

Contact us at Hershey Equipment Co. about our hog equipment. It takes a lot of planning, knowledge and experience to develop a profitable confinement operation. We will assist you in the planning and recommend the most efficient arrangement of equipment. This service we provide will blend the building and equipment together to form a practical, labor saving, economical hog system for top quality hogs.

Give Me Your Attention Please!

**IT PAYS TO RAISE  
HOGS IN A SYSTEM  
DESIGNED BY  
HERSHEY  
EQUIPMENT CO.**

**Gestation  
Systems**

reduce stress and the  
opportunity for fighting

**Farrowing  
Systems**

are designed with both the  
sow and farmer in mind.

**Finishing  
Systems**

are designed using top  
quality penning  
and feeders.

**Nursery  
Systems**

include pig rearing cages  
or penning equipment.

HERSHEY EQUIPMENT SELLS THE BEST & SERVICES THE REST



**H**  
HERSHEY EQUIPMENT  
COMPANY, INC.

SYCAMORE IND. PARK  
255 PLANE TREE DRIVE  
LANCASTER, PA. 17603  
(717) 393-5807

Route 30 West of  
the Centerville Exit

DESIGNERS OF QUALITY SYSTEMS FOR POULTRY, SWINE & GRAIN HANDLING.