

NEW UNDERGROUND STEEL FUEL STORAGE TANKS

Capacity (Gallons)	Diameter	Length	Gauge (Thickness)	Weight (Pounds)	Price FOB Quarryville
285	3'0"	5'6"	12	278	*114.00
550	4'0"	6'0"	10	549	198.00
550	4'0"	6'0"	7	751	241.00
1,000	4'0"	10'8"	10	827	291.00
1,000	4'0"	10'8"	7	1,129	358.00
1,000	5'4"	6'0"	7	1,028	333.00
1,500	5'4"	9'0"	7	1,388	447.00
2,000	5'4"	12'0"	7	1,735	546.00
3,000	5'4"	17'11"	7	2,432	736.00
4,000	5'4"	23'10"	7	3,130	929.00
5,000	8'0"	13'7"	1/4"	4,484	1645.00
6,000	8'0"	16'2"	1/4"	5,123	1800.00
8,000	8'0"	21'6"	1/4"	6,475	2230.00
10,000	8'0"	26'10"	1/4"	7,825	2660.00
10,000	10'0"	17'0"	1/4"	6,956	2405.00
12,000	10'0"	20'6"	1/4"	8,074	2800.00
12,000	10'6"	18'7"	1/4"	7,900	2690.00
15,000	10'6"	23'2"	5/16"	11,857	4000.00
20,000	10'6"	31'0"	5/16"	15,105	4993.00
25,000	10'6"	38'7"	3/8"	22,115	7875.00
30,000	10'6"	46'4"	3/8"	25,999	9125.00

Tanks are fabricated in strict accordance with the specifications of Underwriters' Laboratories, Inc. Exteriors of underground tanks are coated with black asphaltum paint. Exteriors of above ground tanks are coated with red primer STI-P3 system of corrosion protection for underground steel storage tanks available at an additional charge. We can provide timely delivery anywhere from 5 locations: Quarryville, PA; East Palestine and Urbana, Ohio; Clarksville & Chester, Virginia. Contact us for delivery costs. We invite inquiries by phone or mail.

USED UNDERGROUND STEEL FUEL STORAGE TANKS

Capacity (Gallons)	Diameter	Length	Gauge (Thickness)	Weight (Pounds)	Price FOB Quarryville
275*	27"	5'	14	250	*60
280	36 1/2"	5'	12	280	65
1,000	5'4"	6'	7	827	75 to 100
1,500	5'4"	9'0"	7	1,388	75 to 175
2,000	5'4"	12'0"	7	1,735	100 to 200
3,000	5'4"	17'11"	7	2,432	150 to 300
4,000	5'4"	23'10"	7	3,130	250 to 500
5,000	6'0"	23'8"	1/4"	5,089	500

Used tanks and used tank shells may not bear underwriters' label nor are coated with black asphaltum paint. *Above ground.

USED UNDERGROUND STEEL FUEL STORAGE TANKS SHELLS

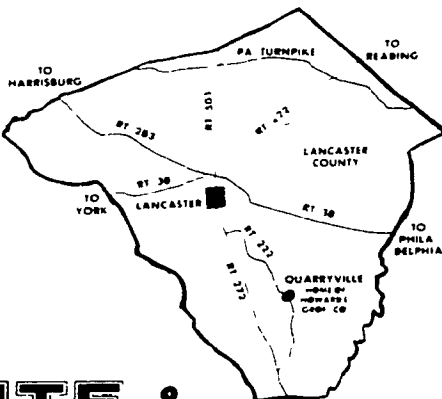
(no ends) FOR BRIDGES, CULVERTS, FIREWOOD STORAGE, ETC.

Previous Capacity	Diameter	Length	Gauge (Thickness)	Weight (Pounds)	Price FOB Quarryville
2,000	5'4"	12'0"	7	1,615	*200.00
3,000	5'4"	17'11"	7	2,312	300.00
4,000	5'4"	23'10"	7	3,010	400.00

Used tank shells have the ends removed.

LOW PRICE PROTECTION POLICY:

Within 30 days of purchase if someone advertises or offers at a lower price the same tank you have already purchased from us, let us know, because we'll pay you the difference!



FILL-RITE & GASBOY PUMPS

HOWARD E. GROFF CO.

Over Forty Years of Reliable Service
 Fuel Oil, Gasoline, and Coal
 111 E. State Street, Quarryville, PA 17566
 Phone: 717-786-2166

HOURS:
 Mon.-Fri.: 8 AM - 4 PM

Pa. direct marketing guide now available

HARRISBURG — A Consumer's Guide to Direct Marketing is now available free from the Pennsylvania Department of Agriculture, according to State Agriculture Secretary Penrose Hallowell.

Hallowell said the directory is published annually and lists approximately 900 Pennsylvania farmers markets and other specialty agricultural outlets, including wineries, cheese factories and mushroom outlets. The farmer-to-consumer directory is compiled as a service to farmers as well as consumers, he said. Farmers use direct marketing to create a reliable market for their products at an improved profit level, while

consumers buying direct get fresher, more flavorful foods at very reasonable prices.

Pennsylvania is a national leader in direct marketing and pick-your-own operations. Hallowell said that the state has nearly 1,200 roadside markets and 600 pick-your-own operations at the present time, an increase of nearly 500 markets in the past four years.

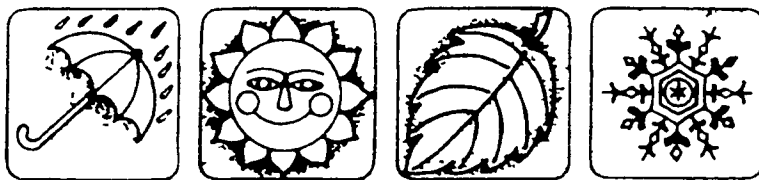
Farmers and consumers alike are realizing the benefits of direct sales and purchases of local products, Hallowell explained. "When you buy locally grown and processed foods, you help boost farm income, cut transportation costs, and create jobs. Favor Your Neighbor this summer and buy Pennsylvania grown foods."

NOW! The ONLY 50,000 mile * radial that's never out of season...



the new **Dunlop ELITE SEVENTY**

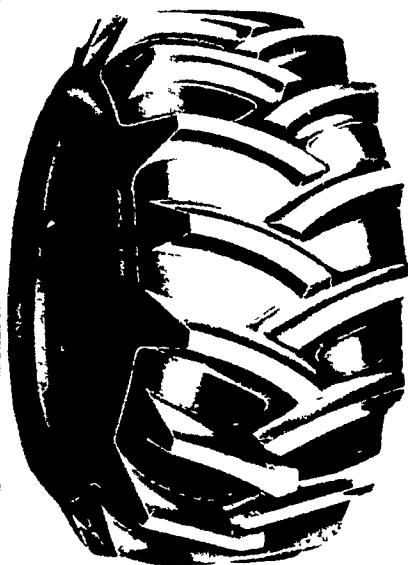
- Exclusive all-season tread compound
- Two shoulder-to-shoulder steel belts
- Radial body plies
- Low, wide 70 series profile



50,000 Mile Limited Warranty

*Under Dunlop's Limited Tread Wear Warranty new Dunlop Elite Seventy Radial Tires are warranted to deliver to the first retail purchaser in normal use a tread life of 50,000 miles when properly fitted to one passenger car. If your tire wears evenly to the tread wear indicators before delivering 50,000 miles Dunlop will, on presentation of the Dunlop mileage certificate to any participating Dunlop dealer and in exchange for the worn tire, give credit toward a comparable new Dunlop tire based on Dunlop's Mileage Unit Price and tire mileage not received. The Mileage Unit Charge reasonably reflects current retail prices. You pay local taxes and mounting and balancing charges. For complete details see your Dunlop dealer.

ALL SIZES & TYPES AVAILABLE AT DISCOUNT PRICES



FARM TIRE SALE

SUPER SPECIAL REAR RADIAL TRACTOR TIRES

18 4x38 Radial, Blemish
\$625⁰⁰ F E T Included

18 4x34 Radial
\$575⁰⁰ F E T Included
 • MOUNTING FREE •

LEOLA TIRE SERVICE, INC.

717-656-2574

258 W. MAIN ST., LEOLA, PA

