

Chester County DHIA Monthly Report



March 1982

The cow with high fat and high milk was owned by David Windle

OWNER NAME OR NUMBER	BREED	AGE	DAYS IN MILK	LBS MILK	% FAT	LBS FAT
David Windle						
Tulip	3	6 7	305	26,149	4 2	1090
Liza	3	6-7	305	23,710	3 3	782
Stella	3	4 4	305	21,721	3 5	769
John M. Umble & Sons						
Sid	3	7 5	305	21,779	4 4	950
Ada	3	4-5	305	24,103	3 9	933
Matilda	3	7 6	305	19,887	4 4	875
Donald L. Kauffman						
B	3	6 6	305	25,819	3 6	937
J. Raymond Harnish						
Ellen	3	8 8	305	24,507	3 7	897
Marsha	3	3 8	305	21,401	3 9	834
Sheila	3	6-0	305	21,268	3 6	758
Floyd Miller & Sons						
15	3	4-6	305	23,727	3 8	890
62	3	4 4	300	18,691	4 4	816

Donald Hostetter Jr						
Iola	3	7-7	305	21,387	4 1	871
Wilmer L. Hostetter						
Terry	3	6-2	305	25,213	3 4	864
Fury	3	8-10	305	22,512	3 5	785
Martha	3	6-5	300	21,972	3 4	741
David E. Weaver						
Michele	3	4-3	305	22,808	3 8	859
Sally	3	5 8	305	22,343	3 7	836
Blinky	3	5 3	305	19,406	3 8	730
Emily	3	7 2	294	18,908	3 8	717
Richard Proud & Son						
195	3	5 10	305	18,983	4 5	845
Willowland Farm						
Connie	3	4 4	305	20,641	4 1	843
Donald Hostetter Jr						
Franky	3	4-6	305	20,543	4 1	833
Clara	3	8 6	305	20,650	4 0	819
Sunrise	3	6 10	305	25,403	3 2	802
Shelly	3	4-5	305	21,631	3 7	800
Celine	3	5 4	304	19,690	4 0	795
Sparkie	3	4 7	305	22,361	3 5	785
Misty	3	4 10	305	20,846	3 7	771
Darlene	3	6-8	305	21,790	3 5	759
Dina	3	7 7	305	18,964	3 9	734
H&R Mason						
21 G	3	3 7	305	21,987	3 8	825
48E	3	4 9	305	25,039	3 0	750
Gottlieb Strohmaier						
Lisa	3	5 7	305	20,327	4 0	803
Sylvia	3	5 11	305	16,595	4 6	767
Ella	3	5 10	305	19,808	3 8	744
Christ L. Stoltzfus						
Barbe	3	8 5	305	24,256	3 3	799
Kenneth Umble						
Poppy	3	5-2	305	21,804	3 7	797
Christine	3	3-2	305	18,440	4 1	748
Robert E. Pepple						
45	3	6-7	305	21,206	3 7	793
28	3	5-9	305	18,827	4 1	781
77	3	4-1	305	19,976	3 7	737
18	3	3-2	305	17,559	4 0	711

Jonas B. Stoltzfus						
Chris	3	6-5	305	22,691	3 5	790
Ardrossan Farms						
Ksalbel	1	3-7	305	17,898	4 4	790
Snotabl	1	2 7	305	17,254	4 4	765
Snowhi	1	2-6	305	18,433	4 1	753
Benjamin K. Kauffman						
N-Rocky	3	4-11	305	22,697	3 5	788
Breck A-De Farm						
17	3	3-11	305	20,515	3 8	783
42	3	3-10	305	22,401	3 4	751
Glen H. Freese						
Galena	3	3 7	305	21,300	3 6	772
Walmoore 1						
277	3	3 8	305	19,517	3 9	770
Aaron Burkholder						
14	3	6-6	305	22,412	3 4	767
69	3	12-6	305	19,849	3 7	737
Enos R. Peifer						
14	3	5-3	301	17,955	4 2	760
24	3	7-2	305	18,170	3 9	705
Wilkinson Farm #2						
1074	3	4-0	305	21,690	3 5	754
Elmer A. Mast						
Annbell	3	4-8	305	19,449	3 9	751
Landis S. Reid						
216	3	4-1	305	15,853	4 7	744
David K. Stoltzfus						
4	3	6-11	290	19,057	3 9	741
Mrs. John B. Hannum 3rd						
84	3	3-7	290	19,796	3 7	740
Robert Dolinger						
33	3	4-6	305	18,484	4 0	733
Walmoore						
106	3	3-2	305	19,962	3 7	731
Newton Evans Jr.						
15	3	6-10	239	15,802	4 6	731
Richard L. Hoover						
6	3	2-7	305	22,945	3 2	726
Chester Hills Farm						
W74	3	5-0	305	19,563	3 7	726

(Turn to Page D26)

HAVING SOIL PROBLEMS?

Here's A Timely Tip...

Be sure you apply enough

The new higher-powered fertilizers often require more lime each application to maintain a neutral soil that tests to pH7



Blue Ball, Pa. (717) 354-4125
Gap, Pa. (717) 442-4148

FISHER AND STOLTZFUS TRAILER SALES

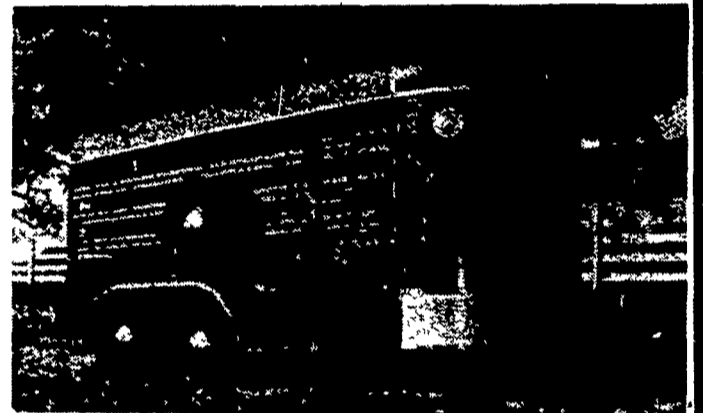
Call 717-768-3832 between 7 a.m. & 9 a.m.
or call 717-354-0723 after 6 p.m. East of New Holland, Pa.

8x20 Gooseneck Flatbed \$3395

8x16 Gooseneck Dump Trailer,
7 ton capacity \$6595

Special
\$2595

6x16 Bumper Trailer
For Horses or Cattle
Small Trailers For Tractors



COMING JUNE 5

Lancaster Farming's Special Annual

DAIRY
ISSUE



FEATURING

- Special dairy stories and features
- Local Dairy Association news
- Latest information for the dairy farmer

ADVERTISERS...
Get Complete Coverage by
Reserving Your Space Now
In This Special Issue.

Deadline for Ads May 28
Phone Area Code 717-394-3047
or 626-1164

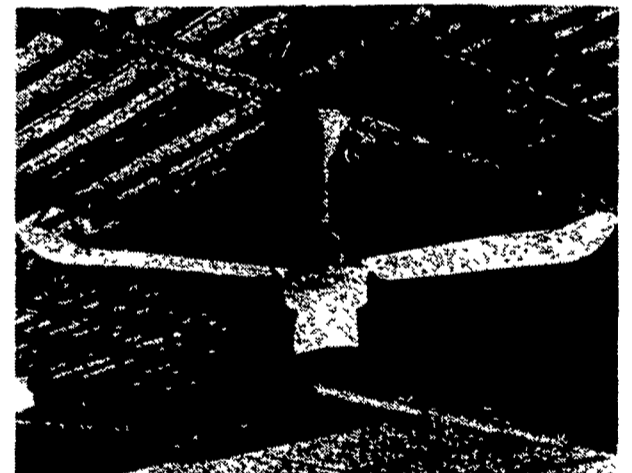


AGRI-FAN

HELPS TO HEAT
IN WINTER!
HELPS TO COOL
IN SUMMER!

Fan carries a five-year warranty
and features:

- Sealed chrome steel ball bearings
- Totally enclosed motor, special moisture resistant silicone treated
- No maintenance
- Displaces 24,000 cubic feet of air per minute (CFM)
- Solid state infinite speed controls
- Uses less energy than 40W bulb at low speed
- 15 amp circuit runs up to 13 fans
- Easy installation, just mount and plug in 32" cord Completely assembled (except blades)
- All metal construction — 60" diameter blade sweep
- Effective up to 60 ft ceiling height
- Aerodynamically designed blades for maximum air delivery
- Down rods available in 10" lengths
- Fans and controls are warranted to be free from defects in materials and workmanship at the time of shipment from the factory and for a period of five years



APPLICATIONS:

- Poultry houses
- Dairy barns
- Milking parlors
- Storage buildings
- Greenhouses
- Office areas
- Confinement buildings
- Livestock buildings
- Processing plants
- Warehouses
- Machine shops
- Homes
- Churches

COMPLETE SYSTEMS & EQUIPMENT FOR CATTLE, HOG,
POULTRY & GRAIN



SALES, INSTALLATION & SERVICE
2754 Creek Hill Rd., Leola, PA 17540
PHONE: 717-656-4151
STORE HOURS: Mon.-Fri. 7:30 to 4:30; Sat. 7:30 to 11:30
SERVING PA, N.J. AND N.Y.

STOP IN
OUR
SHOWROOM
& SEE THE
AGRI-FAN
IN
OPERATION