

Livestock market and auction news

East Coast Carlot

Thursday, May 5

Report supplied by USDA

Compared to Tuesday's close: Prime special fed veal mostly 3.00 higher. Good and Choice boning veal mostly 5.00 higher; inshipped mostly 2.00 higher. Lamb and spring lamb 55-75 lbs. 5.00 than last week; limited test on 55 lbs. down firm. Boneless beef not established, undertone firm.

VEAL CARCASS

270 Head

180-240 lbs. 185.00, mostly 3.00 higher.

BONING TYPE

HIDE-ON

Good & Choice

Northeastern Suppliers: 65-75 lbs. 110.00, all mostly 5.00 higher; 55-64 lbs. 108.00; 45-54 lbs. 106.00; 35-44 lbs. 104.00; 34 lbs. down 102.00.

Inshipped: 71-80 lbs. LTD 112.00, all mostly 2.00 higher; 61-70 lbs. LTD 110.00; 51-60 lbs. LTD 108.00; 41-50 lbs. LTD 106.00; 30-40 lbs. LTD 104.00.

MIXED LAMB

& SPRING LAMB CARCASS

6 Loads

Choice & Prime 3-4

Compared to last week: 55 lbs. down LTD 145.00 firm; 55-65 lbs. 142.00, 5.00 higher; 65-75 lbs. 140.00, 5.00 higher.

SPRING LAMB

CARCASS

Choice & Prime 3-4

4 loads, boxed

55 lbs. down 143.00-144.00, carcass equivalent.

BONELESS BEEF

1 Load

85% chem lean fresh 109.00 late yesterday.

Lancaster Feeder Cattle

Friday, April 30

Report supplied by USDA

Today 445
Last Friday 353
Last Year 420

TREND: Trend not fully comparable, insufficient volume sold last week for a market test. Supply included 206 in graded sale, sold in lots of 10 or more; balance mainly in lots of 10 or more; balance mainly in lots of four or less.

FEEDER STEERS: Medium Frame 1: One lot 600 lb. 66.75. Large Frame 1: Couple lots 730-920 lbs. 62.10-63.00. Medium and Large Frame 1: One lot 732 lbs. 66.00 and one lot 876 lbs. 64.00. Small and Medium Frame 1: One lot 690 lbs. 61.50; Medium Frame 1-2: One lot 850 lbs. 62.35. Large Frame 1-2: One lot 965 lbs. 60.85. Large Frame 2 Holsteins: Couple lots 900-1100 lbs. 54.85-55.85; one lot 845 lbs. 54.00; couple lots 740-825 lbs. 51.00-52.10.

FEEDER HEIFERS: Medium and Large Frame 1: One lot 625 lbs. 52.75. Large Frame No. 1: One lot 510 lbs. 56.25.

Low Cutter 35.75-38.00. Bulls: (Beef Bulls) Good 51.75-56.50. Bulls: Yield Grade No. 1 50.50-50.85; Yield Grade No. 2 46.00-48.00.

FEEDERS: Heifers: 150-175 lbs. Good 52.00-69.00; 240-395 lbs. Good 53.00-65.00; 405-480 lbs. Medium 48.00-50.00; 585-625 lbs. Medium 50.00-54.00. Bulls: 215-290 lbs. Choice 59.00-69.00, 420-495 lbs. Good 50.00-58.00; 570-590 lbs. Medium 48.00-50.00. Steers: 345-560 lbs. Good 59.00-64.00, 610-630 lbs. Good 50.00-58.00, 645-735 lbs. Medium 49.00-50.00.

CALVES: Vealers: Choice 79.00-92.00; Good 65.00-80.00; Standard & Good 60.00-70.00. Farm Calves: Hol. Bulls 88.00-99.00; Hol. Heifers 86.00-92.00.

HOGS: US No. 1-2 57.00-60.00; US No. 1-3 53.50-56.50; US No. 2-3 47.75-52.00; Sows: US No. 1-3 50.00-54.50; No. 2-3 46.00-50.50. Boars: 43.75-45.25.

FEEDER PIGS: US No. 1-3 28-38 lbs. 42.00-52.00 Hd.; No. 1-3 42-46 lbs. 44.00-47.00 Hd. Lambs: Choice 82.00-91.00; Good 68.00-78.00. Stock Ewes: 1 lot of 13 36.00 Hd. Goats: 24.00-49.00 Hd.

G&M Livestock

Monday, May 3

Duncansville, Pa.

Report supplied by auction

Compared to last week, steers higher, hogs higher, cows active.

STEERS: High Choice and Prime 72.00-74.25; Good to Choice 64.00-72.00; Standard to Good 56.00-64.00; Utility 50.00-56.00.

HEIFERS: High Choice and Prime 62.00-66.85; Good to Choice 56.00-62.00; Standard 52.00-56.00; Utility 46.00-52.00.

Carlisle Auction

Carlisle, Pa.

Tuesday, May 4

Report supplied by auction

MARKET: Very active.

CATTLE: Steers: Choice 67.75-68.00; Good 58.00-63.00; Standard 54.00-56.50; Utility 47.00-49.25. Heifers: Choice 63.00-66.00; Good 59.00-62.50; Standard 50.00-56.25. Cows: Utility & Commercial 41.50-44.10; Cutter 37.00-42.00; Canner &

FEEDER STEERS: Good to Choice 300-600 lbs. 52.00-62.00; Standard to Good 300-600 lbs. 48.00-52.00.

FEEDER HEIFERS: 300-600 lbs. 52.00-60.00.

BULLS: 1100-1750 lbs. 52.00-57.50; 900-1100 lbs. 48.00-52.00.

COWS: High Choice to Prime 48.00-52.50; Good 44.00-48.00; Utility 40.00-44.00; Cutters 36.00-40.00; Cannors Down to 30.00.

CALVES: High Choice 90.00-99.00; Good to Choice 70.00-90.00; Standard to Good 50.00-70.00; Utility 30.00-50.00.

FARM CALVES: Hol. Bulls 90-120 lbs. 80.00-109.00; Hol. Heifers 90-120 lbs. 80.00-100.00.

FEEDER PIGS: 25-35 lbs. 25.00-35.00; 35-50 lbs. 35.00-49.00.

HOGS: 200-240 lbs. 55.00-58.10; 170-300 lbs. 48.00-56.00.

SOWS: 45.00-54.50.

BOARS: 38.50-41.75.

LAMBS: 65.00-78.00.

SHEEP: 15.00-65.00.

SLAUGHTER HEIFERS: Mixed Choice and Prime 2-4 875-1075 lbs. 67.00-68.50, closing 67.50-68.50; part load 3-4 1105 lbs. 67.75. Choice 2-4 850-1050 lbs. 65.50-67.50, closing 66.00-67.50. Mixed Good and Choice 2-3 800-1000 lbs. 63.00-66.00, closing 63.50-66.00. Good 2-3 750-950 lbs. 60.00-63.50.

CLOSING WEEK SALES: Utility and Commercial 2-4 40.00-43.00. Boning Utility 1-2 43.00-44.00. High-Yielding Holsteins 44.00-45.00. Cutter 1-2 38.00-42.00. Canner and Low Cutter 1-2 33.00-38.00.

BULLS: Yield Grade 1-2 1050-1800 lbs. 45.00-51.50; closing 46.50-51.50. Few Yield Grade 1 51.00-52.00, closing sales 52.00.

FEEDERS: (Including around 1500 at the regular Thursday auction.) Feeder steers 1.00-3.00 higher; heifers 2.00-4.00 higher. Supply mostly Medium Frame 1-2 300-700 lbs. steers and heifers.

STEERS: Medium Frame 1, 300-600 lbs. 66.00-70.75; 600-900 lbs. 64.00-67.50; Medium Frame 1-2 & Small Frame 1, 300-700 lbs. 62.00-66.00; Small Frame 1-2, 500-700 lbs. 60.00-63.00. Large Frame 2, holsteins, 650-1000 lbs. 53.00-54.25.

HEIFERS: Medium Frame 1, 300-600 lbs. 58.00-61.00; 600-700 lbs. 57.50-60.00. Medium Frame 1-2 & Small Frame 1, 400-600 lbs. 54.00-57.00.

St. Louis Cattle

Thursday, May 6

Report supplied by USDA

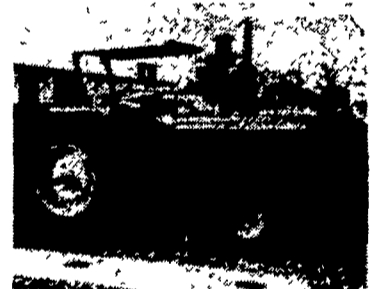
Receipts this week: 3,400

Week Ago: 4,100

Year Ago: 2,900

Compared to the previous weeks close, slaughter steers and heifers mostly 1.00-1.50 higher. Cows 1.00 to mostly 2.00 higher. Bulls 2.00-2.50 higher. Slaughter supply mainly Choice and Choice and Prime 2-4 1050-1150 lbs. steers, around 35% heifers and 10% cows.

SLAUGHTER STEERS: Mixed Choice and Prime 2-4 1050-1250 lbs. 69.00-70.00, closing 69.50-70.00. Choice 2-4 950-1250 lbs. 67.50-69.50, closing 68.50-69.50, part load 2-3 1035 lbs. 70.00. Mixed Good and Choice 2-4 900-1200 lbs. 64.00-67.00, mostly Good 2-3 1050-1300 lbs. holsteins 56.00-62.00, couple packages Mixed Good and Choice 62.00-62.50.



Used John Deere 6030, Roll-Guard, 20.8x38 ... **\$17,350**

Used John Deere 4430 Cab, Air, Quad 20 8x34 ... **\$20,750**

Ford 8N ... **\$1,950**

Ford 9N ... **\$1,750**

IHM W/Power Steering & Hyd ... **\$1,450**

Used John Deere 4430 Cab, Air, Quad 18 4x34 ... **\$20,250**



A.C. Air Planter No Till Like New w/Monitor ... **\$4,850**

Several John Deere 1240 Plateless Four Row ... **\$2,450**

Used John Deere 1250 Plateless Six Row ... **\$4,350**

Used John Deere 7000 Six Row 30" w/Monitor ... **\$7,500**

Used Ford 4 Row Three Point Planter ... **\$550**

Used John Deere 494 Plate 4 Row ... **\$850**

PARTS SPECIAL FROM MAY 10 to MAY 22 10% DISCOUNT on

★ New Holland & John Deere knife sections by the box.
★ New Holland & John Deere harvester knives by the set.



FINANCING AVAILABLE

EVERGREEN TRACTOR CO.
30 EVERGREEN ROAD, LEBANON, PA. 17042
(717) 272-4641

We Service What We Sell With Factory Trained Personnel

SPEERY NEW HOLLAND

STORE HOURS
Mon thru Fri
7 30 AM to 5 PM
Sat
8 AM to 12 Noon

Farmer Boy Comes Through Again...



SPECIAL TRUCKLOAD SALE WOVEN WIRE FLOORING

Check Our Price Before You Buy 5 GAUGE GALVANIZED LOW CARBON TOP QUALITY STEEL

Complete sales, service and installation of: Gestation, Farrowing, Nursery Grower and Finishing Systems

SWINE & POULTRY SYSTEMS SPECIALISTS

FARMER BOY AG.

457 E MAIN AVE MYERSTOWN PA 17067 PH 717-866-7565

BEST IN DESIGN, PRICE AND EXPERIENCE