

Poultry Markets

Nest Run Eggs

Prices are from Egg Clearinghouse, Inc., (ECI) Durham, N.H. and reflect trading prices for gradable nest run eggs (GNR) on ECI, a nationwide trading center for producers, packers and marketers. GNR eggs are classified by weight in 30-dozen cases, and traded in lots of either 300 or 750 cases. Prices are FOB buyers dock, and are computed Tuesday and Thursday of each week. This week's prices for each classification were:

Classification	Net Weight Per Case	Apr. 27 Tuesday	Apr. 29 Thursday
Class 1 - Large	48 lbs.	53	52
Class 2 - Large	45 lbs.	51	51
Class 3 - Medium	42 lbs.	46	46
Class 4 - Small	39 lbs.	41	39½
Breaking Stock	48 lbs.	44	43
Checks	48 lbs.	39½	38½

N. E. Weekly Shell Egg Report

Tuesday, April 27

Report supplied by USDA

Prices paid per dozen Grade "A" Brown eggs in cartons delivered to retail stores:

	Ex. Large	Large	Medium	Small
MASS. X	81-92	80-87	70-77	51-58
Mostly	83-90	82-85	72-75	53-56
N. HAMP.	76-82	74-80	65-71	46-52
Mostly	78-81	76-80	67-70	48-51
R.I.	85-86	83-84	74-75	55-56
VERMONT	83-92	82-91	72-81	-
Mostly	85-86	84-85	74-75	-
MAINE	81-83	80-82	70-72	51-53

X Includes Central and Western Sections only.

Baltimore Eggs

Thursday, April 29

Report supplied by USDA

MARKET COMMENT: Prices steady. Demand only fair but expected to improve over weekend. Supplies adequate.

Cartoned Eggs: Prices to retailers, state graded (min one case sale) white.

Grade A Large	68-73
Grade A Medium	61-66

Philadelphia Eggs

Thursday, April 29

Report supplied by USDA

MARKET COMMENT: Cartoned eggs demand no better than fair. Floor supplies fully adequate. Undertone mixed and unsettled.

Prices to Retailers: Sales to volume buyers, consumer grades white eggs in cartons delivered store door:

A Extra Large	68-72½; A Large
67-71½; A Medium	59-63.

Heinsey's Poultry Market

Root's, East Petersburg

Tuesday, April 27

Report supplied by auction

MUSCOVY DUCKS, DRAKES: range 1.30-1.44 per lb.

MUSCOVY DUCKS, HENS: range 1.18-1.38 per lb.

PULLETS: 6-9 lbs. range .56-.62 per lb.

RED FOWL: 4-5 lbs. range .28-.32 per lb.

RED FOWL: 5-6 lbs. range .32-.38 per lb.

CROSSBRED FOWL: 5-9 lbs. range .30-.42 per lb.

CROSSBRED ROOSTERS: 4-6 lbs. range .60-.92 per lb.

CROSSBRED ROOSTERS: 7-10 lbs. range .30-.70 per lb.

GUINEA FOWL: range 1.30-1.44 per lb.

BANTY ROOSTERS: range 2.75-4.10 ea.

BANTY HENS: range 1.50-1.85 ea.

GEESE: 9-16 lbs. range .54-.80 per lb.

PIGEONS: range 1.35-1.80 ea.

WHITE PIGEONS: range 2.50-3.10 ea.

RABBITS: 4-6 lbs. range .90-1.48 per lb.

RABBITS: 7-10 lbs. range .70-.98 per lb.

GUINEA PIGS: range .10-1.00 ea.

GOATS: range 28.00-61.00 ea.

KID GOATS: 21.00-39.00 ea.

TOTAL AMOUNT COUPS: 734.

Weekly New York Egg Market

From Friday, Apr. 23 to Apr. 30

	Fri.	Mon.	Tues.	Wed.	Thurs.
WHITE					
Jumbo	74	74	74	74	74
Ex Large	70	70	70	70	70
Large	68	68	68	68	68
Mediums	61	61	61	61	61
Pullets	51	51	51	51	51
BROWN					
Jumbo	92	92	92	92	92
Ex Large	80	80	80	80	80
Large	80	80	80	80	80
Mediums	70	70	70	70	70
Pullets	Unquoted				
Peewees	Unquoted				
Off Grade					
Large	61	61	61	61	61
Checks	35	35	35	35	35

Copyright 1982 by Urner-Barry

Eastern Pa. & N.J. Poultry

Wednesday, April 28

Report supplied by USDA

MARKET COMMENT: Live birds generally unchanged to slightly higher. Offerings decreased and light for next week. Canner pack activity light to fair, mostly at 28-29 cents delivered.

Prices Paid at Farm:

Light Type Hens:

Prices paid at farm: 6-9, mostly 7-8.

F.O.B. Plant: 10-11, mostly 10.

Heavy Type Hens:

At Farm: 13-15, 3 mostly 13-14.

F.O.B. Plant: 16-18, mostly 17-18.

Delmarva Poultry

Thursday, April 29

Report supplied by USDA

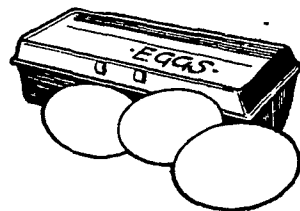
MARKET COMMENT: RTC movement slow to just fair on whole birds. Parts slightly improved at some plants except wings which are slow in clearing. Slaughter schedule moderate heavy. Live supplies adequate to fully adequate. Undertone fully steady but notably cautious.

Today's L.T.L. asking prices unchanged to 2 cents higher on U.S. Grade A at 47-52 cents compared to a week ago.

Estimated slaughter of broiler fryers in Delmarva (000).

Estimated 4/29 1893; Actual 4/22 1784; Actual 4/27 1865; Average

Weights 4/27 4.28; 4/20 4.28.



New York Multiple Drop Broiler Report

Thursday, April 29

Report supplied by USDA

Current broiler/fryer negotiated prices for immediate delivery includes mostly multiple-drop shipments to New York City from Delmarva.

RANGE: U.S. Grade A 46-48, 2935 boxes; Premium (X) U.S. Grade A 49½-50, 9858 boxes.

WTD. AVG.: U.S. Grade A 47.68; Premium (X) 49.94.

(X) Includes special services, selected competitive brands, etc.

Lancaster Farming

Copyright 1982 by Lancaster Farming
P.O. Box 306 - Lititz, PA 17543
Office: 22 E. Main St., Lititz, PA 17543
Record-Express Office Building
Phone: Lancaster 717-394-3047
or Lititz 717-628-1164

Robert G. Campbell, Publisher
Sheila M. Miller, Editor
Dick Anglestein, Staff Writer
Debra L. Koortz, Home Editor
Donna M. Tommeloo, Staff Writer

CORRESPONDENTS

Ginger Secrist Myers, Adams County
Littlestown 717-359-7542

Patty Gross, Bedford, Blair, Huntingdon counties
Roaring Spring 814-224-4694

Laurel Schaeffer, Berks County
Bernville

Jane Erese, Bradford County
Ulster 717-358-3346

Beth Hemminger, Cumberland County, Franklin
and Perry counties
Newville 717-486-5322

Sally B. Bair, Lancaster County
Columbia 717-285-4926

Susan Kauffman, Lancaster County
Peach Bottom 717-548-3131

Joyce Bupp, York County
Seven Valleys

Subscription Price:

\$7.50 per year; \$13.00 - 2 years
\$14.00 per year outside of
PA, NJ, MD, DE, NY, VA & WV

Established November 4, 1955
Published every Saturday
by Lancaster Farming, Lititz, PA
Second Class Postage paid at
Lititz, PA 17543 USPS 304-040

For address change form or new
subscription see Mailbox Markets.

Members of Newspaper Farm Editors Assn.,
Pa. Newspaper Publishers Association,
and National Newspaper Association.



ATTENTION FARMERS

EVERY MONDAY
HATFIELD PACKING CO. and
BAUMS MEAT PACKING

Will Receive Your
Hogs and Cattle at the

DANVILLE LIVESTOCK MARKET

RD4, Danville, PA

- We will receive your hogs from 8 AM to 12 Noon every Monday. Your hogs will be weighed and paid for immediately.
- We will also accept your sows & boars.
- Your cattle will be received from 12 Noon to 4 PM. We will either pay for your cattle immediately or you may sell them dressed weight.
- There will not be a commission or yardage fee deducted from your check.
- You may call our office Monday morning and we will be able to tell you the base price for hogs for the day.
- Please come and give us a chance to continue doing business with you through this method

FOR INFORMATION CALL
717-275-2880



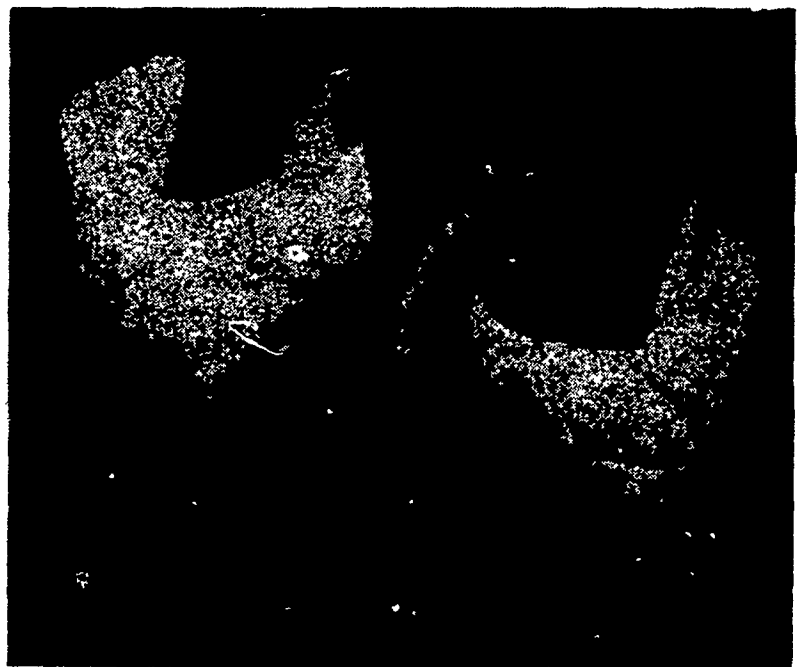
Two Ways To Improve Your Profit Picture XL & DK

Two layers with distinctly different characteristics... From two separate research programs

You don't have to buy from two different companies to get the two top layers on the market.

The XL shows excellent production under many management conditions. The DK responds best to finely tuned, close management.

DEKALB Layers are bred to possess the economic traits most applicable to your operation. You do have a choice... The high productivity XL or the high efficiency DK



Mayer's CHICKS, INC.

DEKALB BROWN & WHITE EGG LAYERS

Quakertown, PA 18951
(215) 536-3155

HUBBARD WHITE MT. BROILERS