



TRACTOR TIRES

MUST SELL FOR CASH

9.5x24, 4 ply	\$82.00
11.2x24, 4 ply	\$95.00
11.2x28, 4 ply	\$113.00
12.4x28, 4 ply	\$125.00
13.6x28, 6 ply	\$155.00
13.6x38, 6 ply	\$191.15
14.9x28, 4 ply	\$158.00
14.9x38, 6 ply	\$224.00
15.5x38, 6 ply	\$220.72
16.9x34, 6 ply	\$250.00
16.9x38, 6 ply	\$275.00
18.4x38, 8 ply	\$364.12
20.8x38, 8 ply	\$530.00
20.8x34, 6 ply	\$450.00
18.4x34, 6 ply	\$289.00
18.4x34 8 ply	\$325.00
16.9x30, 6 ply	\$224.00
18.4x30, 6 ply	\$262.00
14.9x28, 6 ply	\$173.00
13.6x28, 4 ply	\$140.00
16.9x28, 6 ply	\$220.00

* Above tires are original equipment type, Federal Tax is included in above price.

WAGON SPECIALS

11Lx15, 8 ply Firestone	\$50
12.5Lx15, 8 ply Firestone	\$70
9.5Lx15, 8 ply Firestone	\$48

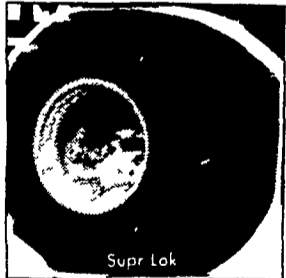
18.4x38, 8 ply Firestone All Traction	\$455.00
18.4x34, 8 ply Firestone All Traction	\$425.00
20.8x38, 8 ply Firestone All Traction	\$560.00
18.4x38, 8 ply Goodyear Power Torque	\$430.00
18.4x38, 6 ply Field & Road	\$325.00

TRUCK SPECIALS

1000x20 Firestone No. 1	\$175.00
1000x20 Radial (Armstrong)	\$235.00

RADIAL TRACTOR TIRES

Call Us For Special Spring Prices!



DUALS AT DEALER PRICES

WE INSTALL TIRES

IN:

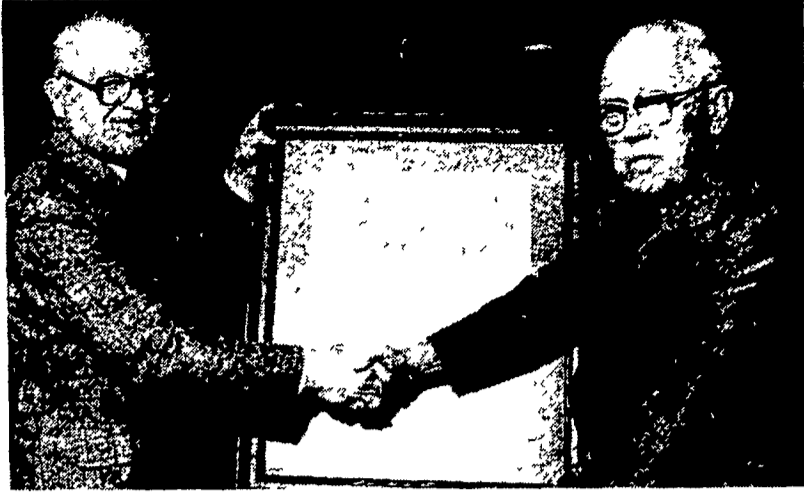
**NEW JERSEY
MARYLAND**

NORTHERN PENNSYLVANIA

Allow 2 weeks For Installation Plus Normal Service Fee

MUMMAU'S FIRESTONE

Mount Joy, PA
717-653-1260



J. Frank Gordy, Sr., right, presents Delaware Poultry Association Appreciation award to Willard T. McAllister, assistant director of the Delaware Cooperative Extension Service.



DIXON... Turns on a dime Saves half the time

Here's where you save time on a DIXON Zero Turning Radius Mower:

- Every corner you turn.
- Every tree you mow around.
- Every turnaround at the end of the yard.
- Irregular edges with ins and outs.

Two hand levers control all the action, speed and direction, with no footwork at all. Come in to mow-test the easy rider now, and save mower time for fun.



Prove it to yourself, ask for a free demo from one of these participating dealers:

PENNSYLVANIA

ADAMS CO.
GOLDEN RIDGE
York Springs, PA 17372
(717) 528-4343

BERKS CO.
JOHN'S MOWER SERVICE
Bernville, PA 19506
(215) 488-1944
J.R. SALES & SERVICE
Fleetwood, PA 19522
(215) 944-7571

CENTRE CO.
PENWOOD CORPORATION
Pleasant Gap, PA 16823
(717) 373-4580

CHESTER CO.
STOLTZFUS FARM SERVICE
Cochranville, PA 19330
(215) 593-2407

CLINTON CO.
GUMMO MARINE
Mill Hall, PA 17751
(717) 726-4551

DAUPHIN CO.
WILLIAM N. MASIMER
Hershey, PA 17033
(717) 534-1398

LANCASTER CO.
LAWN CARE OF PA
Martindale, PA 17549
(215) 445-4541

J.B. HOSTETTER & SONS

Mount Joy, PA 17552
(717) 653-1841

WAYNE B. HOTTENSTEIN
Manheim, PA 17545
(717) 898-7794

LEBANON CO.
BLUE MOUNTAIN ENTERPRIZE
Jonestown, PA 17038
(717) 865-2994
MARTIN'S HARDWARE & EQUIP.
Newmanstown, PA 17173
(717) 949-6817

LEHIGH CO.
KERMIT K. KISTLER, INC.
Lynnport, PA 18066
(215) 298-2011

LYCOMING CO.
CLARK'S-FARM SUPPLY
Williamsport, PA 17701
(717) 494-0660

MONTGOMERY CO.
R.L. MARTIN CO.
Limerick, PA 19468
(215) 489-2597

NORTHUMBERLAND CO.
YOCUMS MOTOR SPORTS
Milton, PA 17847
(717) 742-4706

SCHUYLKILL CO.
MARLIN SCHREFFLER
Pitman, PA 17964
(717) 648-1120

UNION CO.
BENDER'S SALES & SERVICE
Mifflinburg, PA 17844
(717) 966-1373
YORK CO.
NEIMAN EQUIP. CO.
Dover, PA 17315
(717) 292-2101 or 5255

MARYLAND
CARROLL CO.
RAINBOW FARM SUPPLY
Taneytown, MD 21787
(301) 751-1500

RIDGE CABINET SHOP
Mt Airy, MD 21771
(301) 875-2211 or (home) 875-2147

MONTGOMERY CO.
PROMOWER INC.
Rockville, MD 20850
(301) 948-6920

WASHINGTON CO.
VALLEY CYCLERY
Hagerstown, MD 21740
(301) 739-7710

DPIA honors Del. Extension director

NEWARK, Del. — At the 43rd annual banquet of the Delaware Poultry Improvement Association, held recently at Lake Forest North Elementary School in Felton, a special award was presented to Willard T. McAllister, assistant director of the University of Delaware Cooperative Extension Service.

McAllister, who joined the faculty of the University of Delaware in 1947 as an instructor in agricultural research, was named Extension marketing specialist in 1950 and Extension farm management specialist in 1956. He became assistant director of Extension in 1971.

McAllister was honored for his many years of service to agriculture and the Delaware poultry industry.



ELECTRICAL CONTRACTING AGRICULTURAL

RESIDENTIAL • INDUSTRIAL
- 24 HOUR EMERGENCY SERVICE
- STANDBY GENERATORS SALES & SERVICE
- 40' BUCKET TRUCK
- BLOWN CELLULOSE INSULATION

Hawthorne Electric, Inc.

Since 1952
CALL (717) 653-2068
Rt. 230 W. Mount Joy, Pa. 17552

HENRY K. FISHER INC. SANDBLASTING AND SPRAY PAINTING

Aerial Ladder Equipment
Special Winter Prices on Interior Airless Spray Painting
Sandblasting at our Shop During Winter months

667 Hartman Station Rd.
Lancaster, PA
393-6530

HOG PRODUCERS!

Get Top Price for Your Hogs at New Holland



Sold in sorted lots the auction way. See them weighed and sold and pick up your check.

SALE EVERY MONDAY - 8:00 A.M.

NEW HOLLAND SALES STABLES, INC.

Phone 717-354-4341

Daily market Report - Phone 717-354-7288
Abe Diefenbach, Manager

If there is no dealer in your area call Lawn Care Distributors - 215-445-4542