

York team tops spring judging contest

By Laurie Dobrosky
UNIVERSITY PARK — Members of the York County 4-H team braved the cold rain, common to Penn State in the spring, to win the ninth annual spring judging contest held here recently.

The team competed with 250 4-H and FFA members and 40 collegiate contestants in the placing of eight classes of livestock. These classes included: 3 classes of beef cattle, 2 of sheep and 3 of swine.

There were two divisions, youth and collegiate, divided into amateur and professional groups. The amateur groups only placed the classes of livestock. The professional groups were required to give reasons to official judges on the placings of the classes.

The York County team consisting of Bob Livingston of Dover, Bill Wise of Spring Grove, Lisa Dobrosky of Glen Rock and Chris Shive of Seven Valleys was the top team in professional youth division.

Individual winners in the

professional youth division included: Seth Gruber of Lehigh 4-H for beef cattle; Lisa Dobrosky of York 4-H for sheep; and Bob Livingston of York 4-H for oral reasons.

The high scoring overall individual was Dwayne Messick of Lower Dauphin FFA. He was also high scoring individual in swine.

Lancaster County 4-H team A was the top winner in the amateur youth division. Team members included: Michelle Dean, Fritz Frey, Carol Ginder and Emily Weaver.

Marline McCutcheon of Armstrong County 4-H was the high individual in the amateur youth division. She swept the contest placing first in sheep and swine, in addition to her overall title. Vince Cebular, Grassland FFA, was high individual in beef cattle.

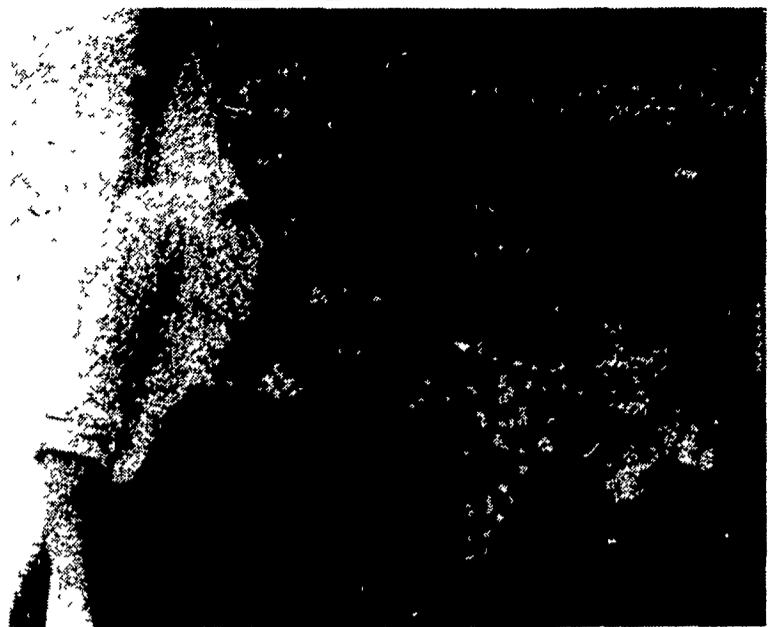
Bill Weist of Leesport captured the title of high individual in the

collegiate professional division.

Bill, a junior in agriculture engineering was high individual in swine, third in beef cattle, and fourth in oral reasons before being named high individual.

The top individual in the collegiate amateur division was Judy Long of Carlisle. Judy, a sophomore in agriculture business management, placed above the other 20 contestants in her division by placing first in beef cattle and second in swine.

The Spring Judging Contest is sponsored each year by the Penn State Block and Bridle Club. The chairman of this year's contest was David Wise of Spring Grove, a senior in animal production. Assisting him were Brenda Werner of Hanover, a junior in animal production and the members of the 1981 Penn State Livestock Judging Team.



The high team in the advanced junior division was York County 4-H team A consisting of (clockwise from left): Lisa Dobrosky, Glen Rock; Bill Wise, Spring Grove; Bob Livingston, Dover; and Chris Shive, Seven Valleys.

TOPS in the 100 h.p. CLASS!

SAME TIGER SIX 105

AIR-COOLED DIESEL TRACTORS IN CHOICE OF 4WD OR 2WD



- 105 H.P. engine
- 6 cylinder 331 cu. in.
- Planetary drive on all 4 wheels*
- Differential lock
- Wet disc inboard brakes ● 540 and 1000 r.p.m. PTO w/hydraulic control
- Fully synchronized transmission 12 forward speeds, 3 reverse
- Cat II 3 pt. hitch w/9328 lbs. lift capacity ● Center front differential and recessed direct drive shaft.* ● Platform design with suspended pedals
- 4-wheel braking* (w/4WD engaged) ● Premium tires for greater traction and longer life.

* 4WD only



TIGER SIX 105 2-Wheel Drive

Drive trains and transmissions are ruggedly built to take the extra stress of 4WD operation. In the 2WD model, only the front wheel drive is eliminated — all other components are unchanged.

In the 100 — 110 h.p. class, the Tiger Six 105 will stand out in any competition in ease of handling, fuel economy and "go"-power.

See your SAME Dealer about these and other SAME 4WD and 2WD tractors in the 35 to 160 h.p. range or contact us for nearest dealer's name.

S&L



S & L Tractors of North America, Inc.
 P.O. Box 6365
 Bridgewater, N.J. 08807
 (201) 560-9350

Dealer Inquiries Invited
 Contact
 Floyd Burleigh
 Regional Mgr.
 R D #2
 Factoryville, Pa. 18419
 717/945-3810

GO AHEAD WITH SAME

4H

PAUL B. ZIMMERMAN INC.

USED STEEL TANKS

OVER 150 IN STOCK
 275 Gal. to 20,000 Gal.

Can Be Used For -

- Feed and grain bins
- Livestock water tanks
- Feeding troughs
- Tolls & Bridges
- Manure Storage
- Fertilizer Storage

PAUL B. ZIMMERMAN, Inc.

Hardware • Farm Supplies
 Custom Manufacturing • Crane Service
 Box 128, R.D. #4, Lititz, PA 17543
 Wood Corner Rd., 1 Mile West of Ephrata
 Phone: 717-738-1121

Make your business dollars work as hard as you do...



with **General Electric's NEW Phoenix**

— an affordable FM radio with the range, ruggedness reliability, and performance so lacking in CB and other low performance radios. Check it out today. Just mail the clip out coupon. No obligation, of course.

Phoenix Business Radio.. quality that speaks for itself!

MOBILE RADIO

Authorized Sales & Service

TRIANGLE COMMUNICATIONS, INC.

RD 3, Rt. 23 West,
 New Holland, PA 17557

PH: 717-656-2211