



PUBLIC SALE

SATURDAY, MAY 1
1:00 P.M.

In Lewisberry & Newberry Area. Located approximately 12 miles south of Harrisburg, 12 miles north of York. Take Exit 13 off Interstate 83, west on Route 382, 1 1/2 miles to T904 Garrison Road. Turn left and go 1 mile to parcels of land.

4 BUILDING LOTS

- LOT #7A: 1.07 Acres - Wooded, Perked and Probed.
- LOT #7B: 1.03 Acres - Wooded, Perked and Probed.
- LOT #8: 1.00 Acre Wooded, Perked and Probed.
- LOT #8A: 1.00 Acre Wooded, Perked and Probed.

TERMS: 10% Down, Cash or Certified Check. Further terms and conditions to be given the day of sale. For additional information, phone 717-362-9596 or 717-758-6004.

R.A. LENKER, OWNER

Allen Shaffer, Attorney
Dockey & Dockey, Auctioneers
Deppen, Apprentice

PUBLIC SALE

SATURDAY, APRIL 24
AT 11:30 A.M.

Located in Halifax, R.D. 4, Dauphin County, Pennsylvania, 3 miles north of Halifax, Penna. on Route 147 or 3 miles south of Millersburg on Route 147 and 3 miles east of Ebenezer Road to Township Road, south 1/4 mile and north on un-paved road. (Watch for Sale Signs).

MOBILE HOME

A 1980 Liberty 14 ft. by 55 ft. mobile home with skirting, storm windows and doors and fuel tank. Inside features include electric stove, refrigerator, washer and dryer and walk-in closets. Owner is giving the option of leasing ground where home is presently located. Home has 2 bedrooms, living room, kitchen and large bath.

TERMS of home are 10% down and other conditions the day of sale. For inspection call 896-3630. Mobile home will be offered at 1:00 P.M.

CARS

1973 Plymouth Fury II (360 HP engine) high mileage and currently inspected. Fury has very good body and interior condition. 1963 Ford XL car, "original", a 4-speed transmission, with 61,000 miles and in good running condition.

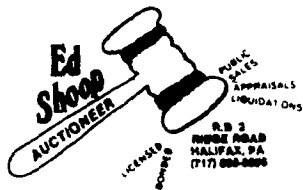
FARM MACHINERY

John Deere (2840) diesel tractor used only 900 hours, Farmall F-20 tractor on rubber, John Deere (1350-1450) 4-bottom plow with side hill hitch (cylinder and hoses included), New Holland (477) 7 ft. haybine, I.H.C. hayrake on rubber, New Holland (273) PTO baler with bale thrower, Hub (155) 40 ft. bale elevator with corn head for crib, New Idea (323) PTO corn-picker, New Holland (33) crop chopper, New Holland (515) 205 bushel PTO manure spreader, Mayrath 16 ft. (4") grain auger with motor, two McCurdy (165 bu.) gravity bin wagon on John Deere running gears (telescopic tongues), two Grove highrack haywagons, 20 ft. feeder wagon on John Deere running gear, two Behlem (750 bu.) corn cribs (must be dismantled), 20,000 gallon steel storage tank, 275 gal. gas tank on skids, 285 gallon diesel fuel tank on skids, 55 gallon dump with pump and other small items.

THIS LINE OF MACHINERY IS IN NEARLY ALL LIKE NEW CONDITION. This will be a short sale, so please be prompt. CASH OR CERTIFIED CHECKS ONLY. Personal checks accepted if known by owner or auctioneer. Lunch available.

MR. & MRS. MICHAEL SNODY,
Owners

Earl Richard Etzweiler, Attorney
Ed Shoop, Auctioneer



Public Sales Register

Closing Date - Monday, 5 00 P M
of each week's publication

SAT MAY 1 - 10 A M
Public Sale of Real Estate, Household Goods, Antiques and Car Located 2 1/2 mi south of New Holland, 3 mi north of Intercourse, turn off Rt 23 in New Holland on South Custer Ave, 2 1/2 mi to Summitville Rd, East Twp, Lanc Co, PA Ivan H St and Florence V Stone, Owners Robert E and Jeffrey R Martin, Auctioneers

MON MAY 3 - 10 A M
Public Sale of Real Estate, Located in E Hempfield, just off East State St. East Petersburg, PA Weaver and Glick, Owners E M Murry and Associates, Auctioneers

TUES MAY 4 - 7 P M
Feeder Sale Located at Carlisle Livestock Market, just off I-81 Exit 12

WED MAY 5 - 9 A M
Consignments Sale by David H



PUBLIC SALE

SATURDAY, APRIL 24
9:00 A.M.

Located 4 miles west of Pillow, Pennsylvania, 6 miles east off Route 147, 4 miles east of Malta. Watch for sale signs along Route 147 day of sale.

FARM MACHINERY

Farmall H Tractor with Good Rubber; Allis-Chalmers 5 h.p. Roto Tiller (practically new); International PTO Grass Mower; Cultivator for International H Tractor; McCormick 2-Row Corn Planter; McCormick Deering Manure Spreader; International 2-Bottom Plow; New Holland Belt-Driven Corn Sheller; Dellinger Hammermill; 4" Dia. Snowco 12" L Grain Auger; (2) New Holland Belt-Driven Grinders; Disk; Culti-Packer; Spring Tooth Harrow; Homemade Tractor Mount Sprayer; Horse Drawn Cultivator; Electric Brooder Stove; Horse Drawn Work Sled; 2-Wheel Trailer; 2-Cycle Maytag Gasoline Engines; Rubber Tire Wheelbarrow; Large Assortment of Log Chains; Tractor Chains; Kleenco Egg Grater; Egg Washer; Etc.

TOOLS

Black & Decker 6 1/2" Circle Saw; Power Kraft 7" Disc Sander-Polisher; Pioneer 1074 Chain Saw; 6" Circle Saw; 3/8" and 1/2" Electric Drill Press; Large Bench Vise; Belt-Driven Buck Circle Saw; Bench Grinder with Motor; Blacksmith Anvil; 1/2" Socket Set; Hydraulic Jacks; Homemade Air Compressor; Large Assortment of Woodworking and Mechanic's Tools; Etc.

ANTIQUES & COLLECTIBLES

The Following Pieces of Furniture in Oak: 3-Pc. Bedroom Suite, Large 4-Drawer Table, C-Roll Desk, Sideboard, Swivel Desk Chair, (2) Extension Tables, Gun Cabinet; Barber's Chair; Blanket Chest; Flour Chest; Jenny Lind-Type Crib; Kitchen Cabinet; (2) Jelly Cupboards; Dry Sink - as is; Dough Box; Wooden Easel; Assorted Rockers - such as Wicker and Wooden, Child's Pressed Back, Plank Bottom; Floor Model Radio; Round Top Trunk; Wooden Wagon Wheels; (2) Iron Butcher's Kettles; Wooden Dovetailed Tool Chest; Enterprise Sausage Stuffer; Hanging Scale; Meat Bench; Assortment of Gas Fixtures and Shades; Etc.

HOUSEHOLD & MISC. ITEMS

Frigidaire Refrigerator; (2) Wooden Rockers; (2) End Tables; (2) High Chairs; Large Assortment of Radios and Radio Parts; Paco Model 60 Tube Tester; Paco Model G-30 RF Signal Generator; Simpson Volt-OHM-Milliammeter; Electric Model D-612T Filtered DC Power Supply; Precision Model IC Capacitor Tester; Assortment of New Radio Tubes; Metal Wheelbarrow; Wooden Extension Ladder, Large Selection of Used Lumber; 12' Aluminum John Boat; 4-Cycle Portable Gasoline Engine with Prop for Air Boat; Etc.

GUNS

Remington Gamemaster Model 760, 270 Cal. with Leupold 3-9 Power Scope; Winchester Model 62 22 Fifle; L.C. Smith 12 Gauge Hammer Double Barrel.

TERMS: CASH. PERSONAL CHECKS ACCEPTED ONLY FROM PERSONS HAVING AN ESTABLISHED ACCOUNT WITH AUCTIONEER.

VIOLET A. LENKER
Owner

DOCKEY & DOCKEY, Auctioneers
DEPPEN, APPRENTICE

Good located 1/2 mile North of Route 23 on North Maple Ave in Leola Lancaster Co, PA Watch for sale signs F Snyder, R Martin, C Wolgemuth J Fry and L Horst, Auctioneer

THURS MAY 6 Community Consignment Auction by the Lincoln Fire Co Same Hackman, Auction Manager 733-2179 John E M and Paul E Martin, Auctioneers

THURS MAY 6 - 5 P M Public Sale of Antiques and Household Goods Located along Eby Chiques Rd, Lanc Co, PA from Rt 283 take Salunga Exit to Prospect Rd to Eby Chiques Rd Minnie V Gantz, Owner CH Wolgemuth, Auctioneer

FRI MAY 7 - 6 P M Public Sale of Dairy Heifers Located at G & M Livestock Market, Inc, Duncansville, PA Consignments welcome

Sherm Glick 717-248-0960, Fred McCartney 717-349-2393, Wayne Fredericks 814 793-3370

FRI MAY 7 - Public Sale of Feeder Cattle Located near Blain, Perry Co Barry Hollenbaugh, Owner Long Bros Auctioneers

FRI MAY 7 - 5 30 P M Gap Auction Antiques and Household Goods sold at every auction Located off Rt 41, Lancaster Turkey Hill Minit Market, cross RR bridge, Ira Stoltzfus & Son, Auctioneers

FRI MAY 7 - 5 P M and SAT. MAY 8 - 9 A M Large 2 Day Antique Sale, Tools, Furniture and Glassware To be held in the Shrewsbury Fire Co Hall, 1/4 mi off Exit 1 of I-83 or about 1 block west of the square in Shrewsbury, York Co, PA Clyde Attig, owner Sechrist Auctioneers

SAT MAY 8 - 9 30 A M Public Sale of Brick Home, Household Goods, Tools and Antiques Located 2 mi north of Village of Bowmansville along Rt 625 in Lancaster Co., PA. Harry Sweitzer Estte LeRoy S Horst and Paul W Horst, Auctioneers

SAT MAY 8 - 9.30 A M Public Sale of Antiques, Household Goods and Collectibles Located at 111 S Market St (rear), Ephrata, PA John H and Irene Weller, Owners T Glenn and Timothy G Horst, Auctioneers

SAT MAY 8 - 1 P M Public Sale of 13 acre Farmette Located along Custer Ave, 1 1/2 mi south of New Holland Daniel L and Dorothy S Stoltzfus, Owners Nevin Martin and Lewis Groff, Auctioneers

SAT MAY 8 - 2 P M Public Sale of Real Estate Located in the Town of Gap, corner of Chestnut and Reservoir Sts, off Rt 41 back of Fulton Bank or from Oxford take Rt 41, 12 mi north to Gap, Salsbury Twp Ira and Ella Mast, Owners Lloyd H Kreider and Randal V Kline, Auctioneers

SAT MAY 8 - 9.30 A M and THURS. MAY 13 - 6 00 P M Public Sale of Antiques & Collectibles, Books, Toys, Bottles, Baskets, Crocks, Jugs, & Quilts, Glassware, and Misc Located in Halifax, RD 2, Dauphin Co, PA one mile west of Matamoras on Million Dollar Rd, off 225 or approx 5 miles North of Clarks Ferry Bridge on Rte 147 and east 1/2 mile on Million Dollar Rd, 15 miles NE Harrisburg on Rte 147, (watch for sale signs) Titus Enders, Executor, Ed Shoop, Auctioneer

ANNUAL SPRING HEIFER SALE

TUESDAY, MAY 11
6:30 P.M.

Sale to be held at the Green Dragon Livestock Sales Barn, RD 4, Ephrata, PA.

Consisting of 350-400 head of heifers

Stages-from calves to springers. Some vaccinated-purebreds and grades.

Consignments from local farmers and also western and northern Pennsylvania.

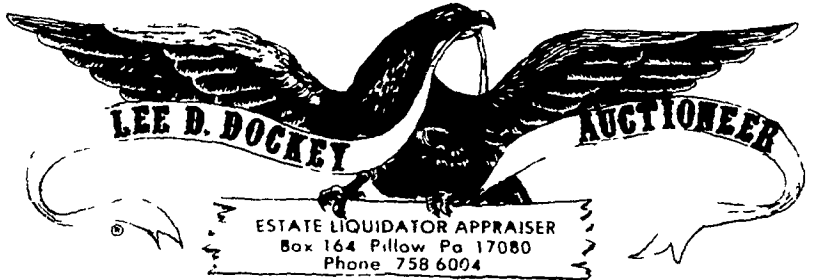
All Consignments Welcome

We would appreciate if all cattle were consigned by noon on May 11.

30 day TB test and health charts furnished.

Walter H. Risser
Proprietor

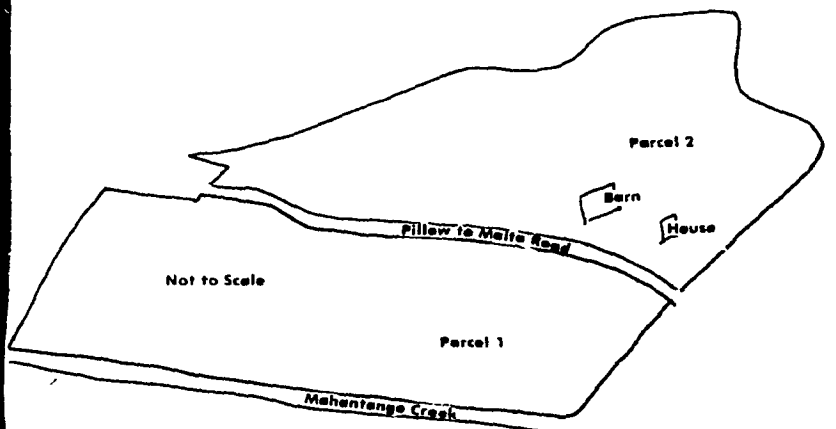
717-733-2444 office
717-838-4318 home



PUBLIC SALE

TUESDAY, APRIL 27, 1982
AT 7:00 P.M.

LOCATED APPROXIMATELY 3 MILES WEST OF PILLLOW PENNSYLVANIA OFF ROUTE 225 ALONG THE MALTA ROAD
APPROXIMATELY 40 MILES NORTH OF HARRISBURG 20 MILES SOUTH OF SUNBURY



PARCEL NO. 1: Consisting of 43 acres, more or less, having frontage on the south along the Mahantongo Creek having frontage on the north along SR49001

PARCEL NO. 2: Consisting of 74 acres, more or less, having frontage on the south along SR49001 having frontage on the west along Twp Road 306, having thereon erected a large bank barn 8 room dwelling and other out buildings

NOTE: Both parcels have wooded and tillable acreage. Parcels No 1 and No 2 will be offered individually and as a unit. For additional information or inspection phone 758 2758 or 758 6004

TERMS: 10% Down. Further terms and conditions to be given the day of sale.

ESTATE OF WILLIAM L. DEPPEN
ALICE M. ADAMS, EXECUTRIX

WILLIAM H. WIEST, ATTORNEY
DOCKEY & DOCKEY, AUCTIONEERS
DEPPEN, APPRENTICE

