



Chester County DHIA Monthly Report

Chester Co. DHIA - February 1982

The cow with high fat and high milk was owned by Paul King

OWNER NAME OR NUMBER	BREED	DAYS IN MILK	LBS. MILK	% FAT	LBS. FAT	
Paul King	3	5-0	305	30,769	3.8	1172
Nellie						
Melwood Farm						
Steffy	3	5-7	305	27,519	4.1	1122
Coconut	3	6-0	305	27,159	3.5	943
David K Stoltzfus						
11	3	7-10	305	26,564	4.0	1054
Lester Eby						
Bonnie	3	7-8	305	24,491	4.0	990
John S Stoltzfus						
Valente	3	8-5	305	24,508	3.9	950
Dee	3	5-6	305	25,033	3.5	868

Rono	3	3-2	305	20,457	3.8	782
Patsy	3	2-8	305	16,199	4.4	714
Newton Evans Jr						
30	3	7-4	305	22,448	4.2	941
2-0	3	4-3	305	27,408	2.9	801
Harvey C Waltz						
E	3	7-8	305	23,715	3.7	888
1-18	3	6-1	305	25,580	3.2	811
Jona. B Stoltzfus						
Apple	3	8-2	305	20,579	4.2	869
Hargret Dairy Inc						
Matt	3	6-8	305	21,494	4.0	866
10	3	5-7	300	16,882	4.2	704
H&R Mason						
5-1	3	2-7	305	19,477	4.4	848
52-E	3	3-8	305	21,398	3.6	780
17-H	3	3-6	305	21,456	3.6	767
12-G	3	2-8	305	19,559	3.6	710
Ben Beiler & T Barlow						
Honey	3	7-4	305	23,994	3.5	847
Rosetta	3	3-2	305	20,519	4.0	826
Amanda	3	3-2	305	20,833	3.7	762
George P Lamborn						
Anabel	3	3-2	305	23,581	3.6	847
Charles J Moore						
21	3	7-0	305	26,951	3.1	846
Ardrossan Farms						
Weezie	1	8-11	305	21,716	3.8	836
Snoquen	1	2-7	305	19,125	4.1	785
CM ZZ	1	6-4	305	19,008	4.1	781
M-Loyd	1	2-7	305	17,392	4.2	732
Rosroyl	1	2-7	305	19,180	3.8	730
L-Preme	1	4-8	305	17,980	3.9	708
Harold R. Kulp						
Yet	3	4-2	305	20,996	4.0	831

Lancaster Farming, Saturday, April 17, 1982-D15

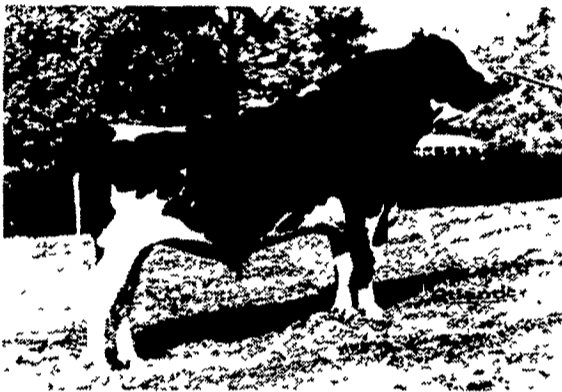
Wafer	3	5-4	305	22,042	3.5	768
Yule	3	4-5	305	18,107	4.1	735
Herman Stoltzfus						
Prisila	3	4-3	305	22,639	3.7	830
Teresa	3	3-0	305	17,980	3.9	706
Willowland Farm						
Beth	3	6-1	305	21,519	3.8	823
Merle J King						
Lulu	3	6-2	305	20,592	4.0	822
Patches	3	7-6	293	20,838	3.5	722
Swan View						
Nancy	3	4-6	305	22,782	3.6	820
Glenda	3	6-6	305	18,816	4.3	802
Matty	3	6-3	305	20,350	3.8	777
Glen H Freese						
De	3	6-1	305	20,057	4.1	817
Dunwood Farm						
Lily	3	3-6	305	23,616	3.5	816
Marvis	3	4-9	305	19,910	3.7	735
James V Yale						
12	3	3-9	305	17,587	4.6	815
27	3	3-4	305	19,664	3.6	715
Vernon Guest & Son						
Sadie	3	8-6	305	18,656	4.3	806
Floyd Miller & Sons						
41	3	6-8	305	23,241	3.5	803
17	3	4-2	305	20,389	3.9	796
11	3	4-0	305	16,518	4.3	706
Christ L Stoltzfus						
Hero	3	4-9	305	22,525	3.5	797
Applebrook Guernseys						
F Dawn	2	8-0	305	16,283	4.9	797

(Turn to Page D17)

Atlantic Test Improvers



15231 Kingway Elevation VERY-VG
162 Daus. Ave. 17,336M 4.0% 691F
Pred. Dif. (90% rpt.) +989M +.29% +80F
94 Daus. Cl. 79.7 + 80 PDT (86% rpt.)



15H205 Wauk-A-Way Fond RELIANCE-VG
82 Daus. Ave. 16,477M 3.8% 621F
Pred. Dif. (83% rpt.) +665M +.03% +29F
46 Daus. Cl. 81.6 + 1.99 PDT (76% rpt.)



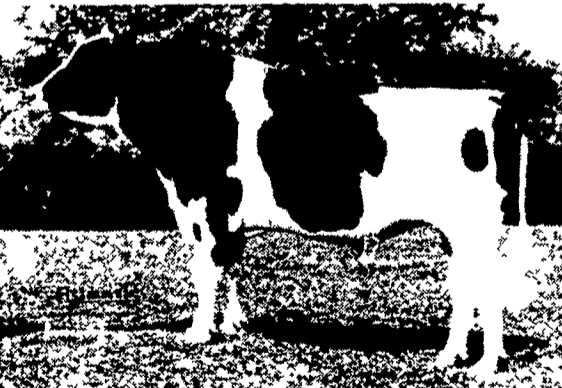
15H206 Kler-Vu CHARISMA-EX
53 Daus. Ave. 16,132M 3.9% 629F
Pred. Dif. (77% rpt.) +638M +.16% +47F
26 Daus. Cl. 79.9 + 1.48 PDT (66% rpt.)



15H228 Fultonway TRANSFORMER-GP
79 Daus. Ave. 16,051M 3.8% 610F
Pred. Dif. (80% rpt.) +924M +.02% +37F
28 Daus. Cl. 78.9 + .56 PDT (66% rpt.)



15H277 Singing-Brook STARMATE-VG
24 Daus. Ave. 16,906M 3.9% 656F
Pred. Dif. (48% rpt.) +979M +.10% +50F
(no type summary to date)



15H175 Lawcrest MARVEX-EX
2,161 Daus. Ave. 17,614M 3.7% 645F
Pred. Dif. (99% rpt.) +874M +.01% +34F
664 Daus. Cl. 79.6 + 1.17 PDT (98% rpt.)

Also: 1H266 Arlinda PENSTAR +1,551M +.02% +59F (97% rpt.)
(all data is January/82 USDA and HFA)

These sires and more are available through daily Technician Service and Direct Herd Sales!

Atlantic

LIVESTOCK SERVICES BREEDERS COOPERATIVE

Our Daily Holstein Selection Includes:
26 bulls with milk over +1,000M
34 bulls with value PD over +\$100
8 bulls with +PD for % test
23 bulls with at least 70% repeatability
22 bulls with +PD for type

Member - NAL Affiliated Breeders
Toll-Free 24 Hour Phones For Service:
Lancaster Area 569-0411
Pennsylvania 800-732-0391 Del., Md. & N.J. 800-233-0216
Approved by Certified Semen Services

SANDBLASTING REPOINTING WATERPROOFING

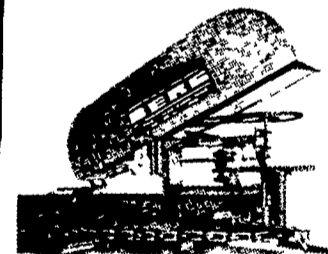
From repairing drafty, leaking walls to complete stucco removal and repointing, exterior restoration or farmhouses is our specialty!

REASONABLE RATES
JAMES H. DOSTER
507 South Spruce Street
Lititz, Pennsylvania 17543

For information or a free estimate, return coupon below.

Name _____
Address _____
City _____ State _____ Zip _____
Phone: Area _____
Directions to your home: _____

BERG BARN CLEANERS



OUTRUN
OUTLAST
OUTCLEAN
OUTPERFORM

Berg Barn Cleaners are the best you can put in any barn. They're the best in strength, durability and performance. Each chain link is forged, in one piece, from special nickel chrome content steel. No tools required to remove them. The continuous duty motor eliminates over-heating and assures ample power at all times. We could go on and on, but better yet, for more complete details, please call us.



BERG
BUILDS EVERYTHING
BETTER FOR BARN

SEE YOUR LOCAL
BERG DEALER

DONALD UPPERMAN
1126 N. Franklin St.
Chambersburg, Pa.
717-264-6007

**DOMBACH
EQUIPMENT INC.**
McAllisterville,
Pa. 17049
717-463-2191

ROVENDALE SUPPLY
RD 2,
Watsonstown, PA 17777
717-538-5521

CLAIR C. BEATTY
RD 4, Box 188A
Indiana, Pa. 15701
412-465-7368

AARON ZIMMERMAN
RD 1,
East Earl, Pa. 17519
215-445-5309

R. LAMAR HACKMAN
RD 2,
Mifflinburg, Pa. 17844
717-524-4901

ROBERT GUTSMALL
RD 1,
Womelsdorf, Pa. 19567
717-933-4616

**AREA
REPRESENTATIVE.
CHESTER INGRAM**
RD 2,
Bellefonte, Pa. 16823
(Hublersburg)
814-383-2798