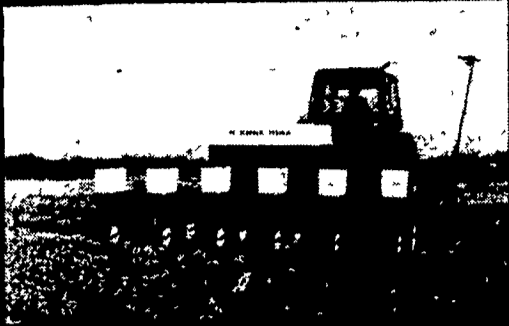


SPECIAL ON 6 ROW MODEL 800 AIR PLANTERS



| | |
|-------------------------------------|----------|
| IH 800 6 row air planter | \$9985 |
| IH 435 baler w/thrower | \$7,995 |
| IH 445 baler w/thrower | \$8,995 |
| IH 1750 grinder mixer | \$6,225 |
| IH 730 40' width 4 bottom trip plow | \$5575 |
| IH 720 51' 18" auto reset plow | \$8325 |
| IH 952 cadet 20 HP w/3 pt hitch | \$4375 |
| IH 582 rear drive cadet 16 HP | \$2375 |
| 4500 field cult 16 3 | \$2750 |
| IH 84 hydro diesel w/2250 loader | \$18,650 |

(Also 484, 584, 684 diesel tractors at special OLD prices)
Rebates are available on machines marked with an asterisk

RED HOT SPECIAL

HYDRA-MAC 20C SERIES III SKID STEER LOADER

- 58 H P 144 cu inch diesel engine
- Fully hydrostatic all gear drive
- Tipping load capacity 4000 lbs

- 10.00x16 56 ply tires
- 68" material bucket
- 66" manure fork



List \$23,500 (1 Only)
SALE \$15,280

USED TRACTORS & EQUIPMENT

| | |
|---|----------|
| Farmall 1566 w/cab air conditioning local tractor used 1675 hours sold new in '76 | \$18,750 |
| Farmall 650 diesel | \$12,900 |
| Oliver 77 | \$1,200 |
| IH 544 Hydro utility 3 pt hitch | \$4,900 |
| IH 713 diesel combine 4 row narrow corn head 13 grain head | \$23,000 |
| NH 352 grinder mixer | \$3,150 |
| NH 479 mower conditioner | \$3,150 |
| NH 717 forage harvester corn head & grass head | \$1,275 |
| Genl forage harvester w/2 row corn head and grass head | \$1,000 |
| IH 830 harvester w/2 row head | \$6,500 |
| JD 241 baler w/thrower | \$1,500 |
| IH 37 baler w/thrower | \$800 |
| IH 430 baler w/thrower exc | \$2,950 |
| Walsh 200 gallon sprayer | \$1,200 |
| Ontario 1347 grain drill late model power lift | \$950 |

NEW ALLIED EQUIPMENT

| | |
|--|---------|
| Amco 10 6' rock flex disk harrow w/22 blades | \$4,175 |
| Brillion 12' cultipacker | \$1,275 |
| McCurdy #230 gravity box | \$675 |
| Century 400 gallon poly spray tank | \$350 |

In our continuing effort to better serve our customers, we are happy to announce a new toll-free telephone number that will go into effect April 14, 1982. Call 800-692-7829 for your sales, parts & service needs.

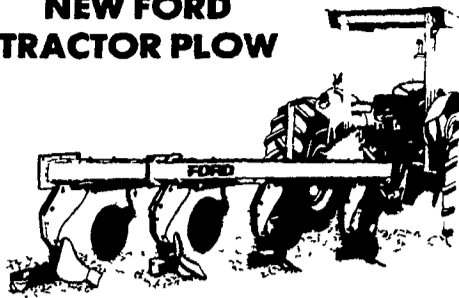
We ship parts by UPS daily

C & W EQUIPMENT, INC.

260 York Rd
Carlisle, PA 17013
717-243-4419

The Time Is Right...
The Price Is Right!!

NEW FORD TRACTOR PLOW



Model 142 Ford 3/16" Tractor Plow, 3 Pt. Hookup, 30" High Pivot Spring Trip Beams With Gauge Wheel and 3 Spring Mounted 18" Coulters and Cover Boards...

\$1,595



Call Ray, Mitch or Walt...
(301) 734-7722
or
(301) 879-1434

Sales & Service On:
• Ford • New Idea • New Holland •
WALTER G. COALE, INC.
2849-53 Churchville Rd.
Churchville, Maryland

FARM EQUIPMENT

FARM EQUIPMENT

FARM EQUIPMENT

FORRESTER FARMS

1337 Lincoln Highway East
Chambersburg, PA 17201
Phone: 717-263-0705
Sales - Parts - Service



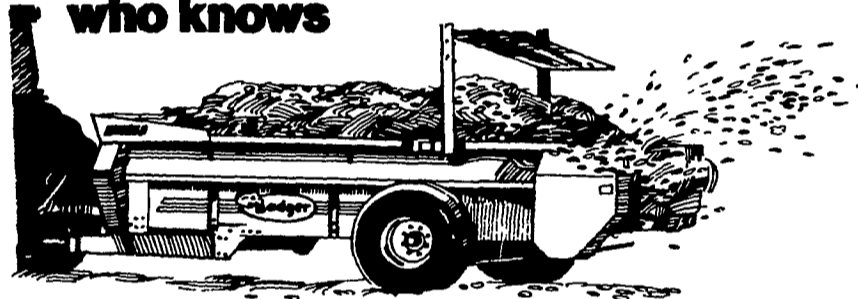
| | |
|---|-------------------------------|
| New 610 DT \$10,604 | MF 175 |
| New Long traveling irrigation unit 1553 | 1 Fo SOLD |
| New Long 360 \$6345 | Ford TW 10 w/canopy |
| New Long 510 \$7078 | Ford 8600 w/dual power |
| 2 Long 560 one w/cab, one w/loader | 1 Ford 6600 w/dual power |
| New Long 460 \$6653 | New Ford 6600 \$14,900 |
| New Long 310 \$5483 | New Ford 6610 \$15,900 |
| IH 1066 w/cab | Ford 5600 |
| IH 656 Hydro | 3 Ford 5000, one w/dual power |
| IH 784 w/cab | Ford 4500 backhoe |
| Farmall M w/PS | Ford 4000 w/loader |
| 1 JD 4 SOLD cab | 3 Ford 3000 Super Dexta |
| 2 JD 4020 one w/cab | Ford 841 |
| 1 JD 3130 w/cab | Ford 772 A loader |
| 2 JD 3120 | Roadless 95 4 wh. drive 90 HP |
| JD 3020 | |
| 2 JD 2130 1 w/cab | |
| 1 JD 2120 | |
| JD 2030 w/cab | |
| Jaeger irrigation pump w/engine | |

1/4 Mile East of Exit 6 I-81

LONG SUPER ONE DAY SALE PRICES GOOD UNTIL APRIL 30, 1982

SPECIAL OF THE WEEK

Talk to the man who knows



Now there's a new Badger Spreader with more capacity and a guarantee that can't be beat!

For years manufacturers of manure spreaders have bragged about heaped capacities. That's fine, as long as you're handling manure that can be heaped.

But today, more farmers are working with liquid and semi-solid manure. And no matter how hard you try, you just can't make a pile out of soup.

That's why Badger designed their new BN3260 and BN3210 Manure Spreaders with extra struck level capacity. The 3260 holds 260 bushels heaped and 166 cu. ft. struck. The 3210 has a 220 bushel heaped capacity, 143 cu. ft. struck capacity.

Check our prices... our cost per cubic foot is less!

With wood sides and floor, rust won't be a problem.

IN FACT, THE WOOD SIDES AND FLOOR ARE GUARANTEED FOR AS LONG AS YOU OWN THEM.

TROUBLE-FREE HYDRAULIC APRON DRIVE

Badger's hydraulic apron drive provides efficient, trouble-free unloading. The hydraulic drive offers smooth, even delivery to the beater in five speeds! from 2 to 20 feet per minute. And, the system is virtually maintenance free — Economical too!



UP TO \$300 REBATE
On manure spreaders purchased in April or May 1982
or
WAIVER OF FINANCE TILL
Oct. 1, '82, on all spreaders (at participating dealers)

82BN2R



SHOW EASE STALL CO.

573 Willow Rd., Lancaster, PA. 17601
(717) 299-2536



Case 1190 Tractor, nice shape, 15 mos. old. Traded for larger tractor.

Case 1070 Tractor, Power Shift, Nice shape

JD 4030 Tractor w/canopy in A-1 Shape

Used in good cond., reconditioned, 206 spreaders

Good used 10A Horse Drawn Spreader

Plus NI cut/ditchers & mow/ditchers, tractors & spreaders in stock at Good Prices.

C. & P. FULTZ EQUIPMENT

RD 1 Spring Mills, PA (814) 422-8807, Ask for Paul

TRACTORS

- Case VAC
- Case 930 Tractor "CK"
- Case 430
- David Brown 990 w Loader
- 990 David Brown
- David Brown 1410
- Oliver 880
- White 2-105 Tractor

LOADERS

- Case 1830 Skid Loader
- Case 1537 Skid Loader
- Case 450 Crawler Loader
- Case 450 Crawler Dozer
- 1845 Diesel Uni-Loader

TILLAGE

- Case Disc Harrow, 10'
- MF 12 Ft Spring Tooth Harrow
- Oliver 2 Bot Trailer Plows
- MF 720 2' Offset Disk
- Used Cultipacker

HARVESTING EQUIPMENT

- Case 600 Combine w/3-Row Head
- NI Unisystem 702 Tractor, 710 Combine & 760 Harvester
- NI 727 Husking Bed
- NI 323 1-Row Corn-picker
- NI 2-Row Cornpicker
- Int Mtd Picker, 2 Row
- IH 550 Harvester w/Pickup
- JD No 25 Harvester
- Case 300 Harvester
- JD Chopper
- NH 717 Harvester
- Kools Forage Blower

HAY EQUIPMENT

- NH 469 Windrower
- Hesston 1014 12' Windrower
- Hesston PT 10
- Dump Rake
- 3 pt Hookup Mower
- Bale Thrower Wagon
- Case Hay Rake
- JD Hay Rake
- NI Hay Rake
- JD 14T Baler w/thrower

MISCELLANEOUS

- Ford 4-Row Corn Planter
- JD 2-Row Planter
- IH 400 Corn Planter, 8 Row
- 10 Used Spreaders
- NI 224 10-ton Spreader
- Potato Grader
- Dump Wagon



SPECIAL
• 11Lx15 Tires, 8 Ply Firestone \$49.50
• NI 456 Round Baler

ZIMMERMAN'S FARM SERVICE

Bethel, PA
Phone 717-933-4114