

American Country graces rural and urban homes

BY DEBBIE KOONTZ
LANCASTER — American Country is the hottest look in decorating these days and you don't have to spend a fortune to get it.

In fact, if you're living in a "typical" old farm house, you have the greatest potential toward achieving this look due to the house's often exposed wooden beams, old fire places, extra-wide window seals, and capacity use of wallpaper.

American Country looks expensive, but doesn't have to be. Not only is it the look on the local scene — a look you probably have taken for granted and have been trying to change for years once you get "enough money" — but it's all the rage in large metropolitan areas. Flip through any decorating magazine. People are paying exorbitant prices for the look you now have or can have so easily in most rural areas. 'Extras,' such as old rockers, chests, wooden anything — from old barn forks to sleighs creating an American Country atmosphere — wrought iron tools, and old jugs can be

found at numerous garage sales and auctions.

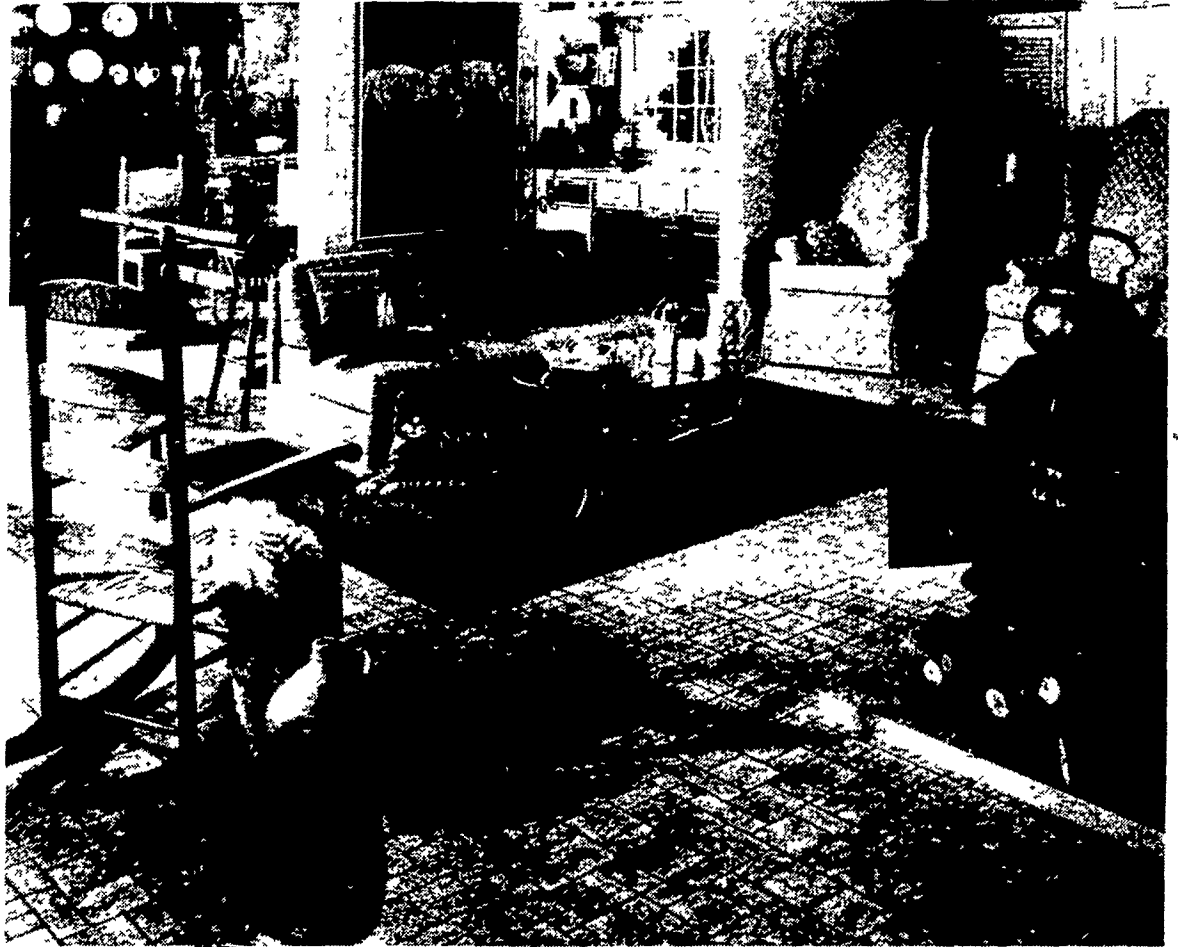
What's the reason for such an upswing in the country look?

According to Al Soles, merchandise manager from Ethan Allen Galleries in Lancaster, the reason is the economy and necessity.

"This look reflects the change going on in lifestyles in America now. People out of necessity are coming back to the home and want it to look good. The '80s look very good for the furniture industry because baby boom children are now buying and realizing home is where they want and have to spend their time. So they put their money into the home," he said.

"The country look happens to be one of the most comfortable looks available. If you look at the economy you will see a trend that happens in our industry. When the economy is bad, people go back to early American looks."

But he denies that the look will be just a passing trend, so if you're thinking of investing in a few 'country' things, your purchase



The American Country look, whether purposely achieved or still in its original form, is gracing the homes of many rural and urban neighbors. Several of the items pictured above

can often be found right on the farm. Look for accent pieces such as jugs, sleighs, forks, and old kettles.

Wye Angus sale grosses \$100 grand

COLLEGE PARK, Md. — Bidders from 13 states brought an auction total of more than \$100,000 last week to the Wye Angus-University of Maryland Foundation's fourth annual sale of yearling bull breeding stock.

The high bid at the sale was \$16,500 for the near half-ton bull Leonid of Wye, and the average price per animal was just over \$3,100 according to W. Lamar Harris, director of the University's Agricultural Experiment Station whose Wye Research Center was the site for the March 29 sale.

"We're very pleased with the interest cattle breeders are showing in the Wye herd," Harris

said.

"Although we're in the midst of a recessionary economy, a successful sale such as this affirms our belief that cattle breeders have confidence in our mission of quality animal research here at the Wye Research Center," he added.

From 1938 — the year of the Wye Angus herd's establishment — to 1981 — the last full year for which herd statistics are available — nearly 6,000 calves valued for their superior fertility, weight gain and genetic purity have come out of a herd that started with only 18 heifers, according to Harris.

will be sound.

"It won't disappear because people live very easily with it. Traditional furnishings really don't change much," he explained.

So how can you achieve this comfortable and lasting look?

Armstrong Industries, a world leader in decorating, suggests shopping second hand stores and be willing to do a lot of the work yourself.

Color often sets the mood of your room and today's country-look favorites are wheat and blue, and the earth tones: rust, beige, brown, cream and gold.

Accessories often include old chests that are functional twofold: they can be used as a side table to place things on, or as a trunk to hide or hold magazines, blankets, dishes, etc.

Old tea kettles, hurricane lamps, wood stoves, jugs, shaker rocking chairs, trestle tables, and reupholstered high-backed wing chairs also will help you get the look you want.

Another benefit of the country look is the minimum use of carpeting. Covering your floors wall to wall with carpet can be very expensive, so instead try a heavy no-

wax linoleum floor with a few accent rugs or carpet remnants; both can be washed easily.

Looking at the picture, you will see how this look can be so easily accomplished. Notice the extras which accent the room such as the glass-topped sleigh, the cream-colored quilt, the basket of yarn, the old hay fork, and the brass tea kettle.

The room appears to be a pleasing facsimile of authentic Americana: comfortable, functional, and warm. Why not see what you can do with your home to radiate this same warmth?

Two Great Alfalfas

524 Yields, winter-hardiness and Bacterial Wilt tolerance are excellent.

531 High tolerance to anthracnose. Very fast recovery after harvest.

Ask your Pioneer salesman about the alfalfa variety that's right for your farm.



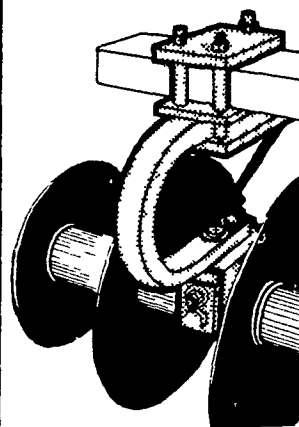
PIONEER HI-BRED INTERNATIONAL, INC., EASTERN DIVISION, TIPTON, INDIANA 46072



The Limitation of Warranty and remedy appearing on the label is part of the terms of sale.

Pioneer is a brand name; numbers identify varieties.

*Registered trademark of Pioneer Hi-Bred International, Inc., Des Moines, Iowa, U.S.A.



DOUBLE OFFSET TANDEM Model F-17

AMCO Introduces Double Offset Harrows Into It's Tough, Tillage Tool Line.

This double offset harrow is available in cutting widths from 9'3" to 15'0" with 9" blade spacing

Weight per cutting foot ranges from 296 to 337 pounds, and standard features include regreasable toggle mounted ball bearings with AMCO's Protect-O-Shield, feathering blades on rear gangs, 1 1/2" square cold rolled, high carbon steel axles, reversible clevis, adjustable gangs and heavy-duty scrapers

These tough tillage tools are designed for use with draw bar horsepower from 50 to 95 hp based on individual model recommendations

Ask your AMCO dealer for a demonstration today

AMCO Products
Yazoo City, MS 39194

Please contact your local dealer or **HAMILTON EQUIPMENT, INC.**

567 S. Reading Road
Ephrata, PA 17522
Phone 717/733-7951

