

At Md. Black-Eyed Susan Sale

Reinforcement daughter brings top bid



Howard and Ann Corcoran, second and third from right, became the proud owners of a Reinforcement daughter at last Saturday's Md. Polled Hereford Assn. Black Eyed Susan Sale. Glenn Bachtell, right, owner of

Huckleberry Hall Farm, Smithsburg, consigned the top-selling animal. Looking on are Md. Polled Hereford Princess Cindy Schultz, 13, of Frederick, left, with the 1982 Queen, Marian Cummings, 16, Westminster, Md.

FREDERICK, Md. — With the wind howling and rattling the tin roof overhead, a crowd of prospective Polled Hereford buyers squeezed into the cramped Frederick Fairgrounds sale barn for the annual Black Eyed Susan spring sale held here last Saturday evening.

The afternoon's driving rains and generally unpleasant weather conditions didn't dampen the spirits of the bidders, however, as Lot 51 moved around the sales ring. This Huckleberry Hall Farm consignment drew a flurry of bids and nods from the crowd until auctioneer Tom Cawood's gavel dropped at \$1,425, selling the heifer to Howard and Ann Corcoran, Potomac, Md.

What made this animal special enough to bring the top bid of the sale? Basically, a pedigree that just wouldn't quit plus the frame and conformation that earned this March 1981 heifer the title of Junior Champion of the afternoon show.

The heifer, Dunwalke Dawn 11N, is sired by a young bull called Reinforcement out of a dam called Dunwalke Mis Vin 938. What makes this combination so special is the fact that Reinforcement, himself a champion, is by the famous national champion Enforcer, 107H and is out of a Kiywana New Trend dam. Not to be out done, Dawn's dam boasts another top Polled Hereford sire in her pedigree — Vindicator, a superior bull sired by one of the breed's greatest female producers, Victorious K47 U81.

There's no doubt that Dawn will serve as a top foundation cow on which the Corcorans can build their Polled Hereford herd. They presently own 15 head of these registered beef cattle and keep them on their 129-acre farm. Ann explained that they've only been in the farming business for the past two years. While she takes care of

the farm, Howard travels to his job as an Environmental Protection Agency attorney.

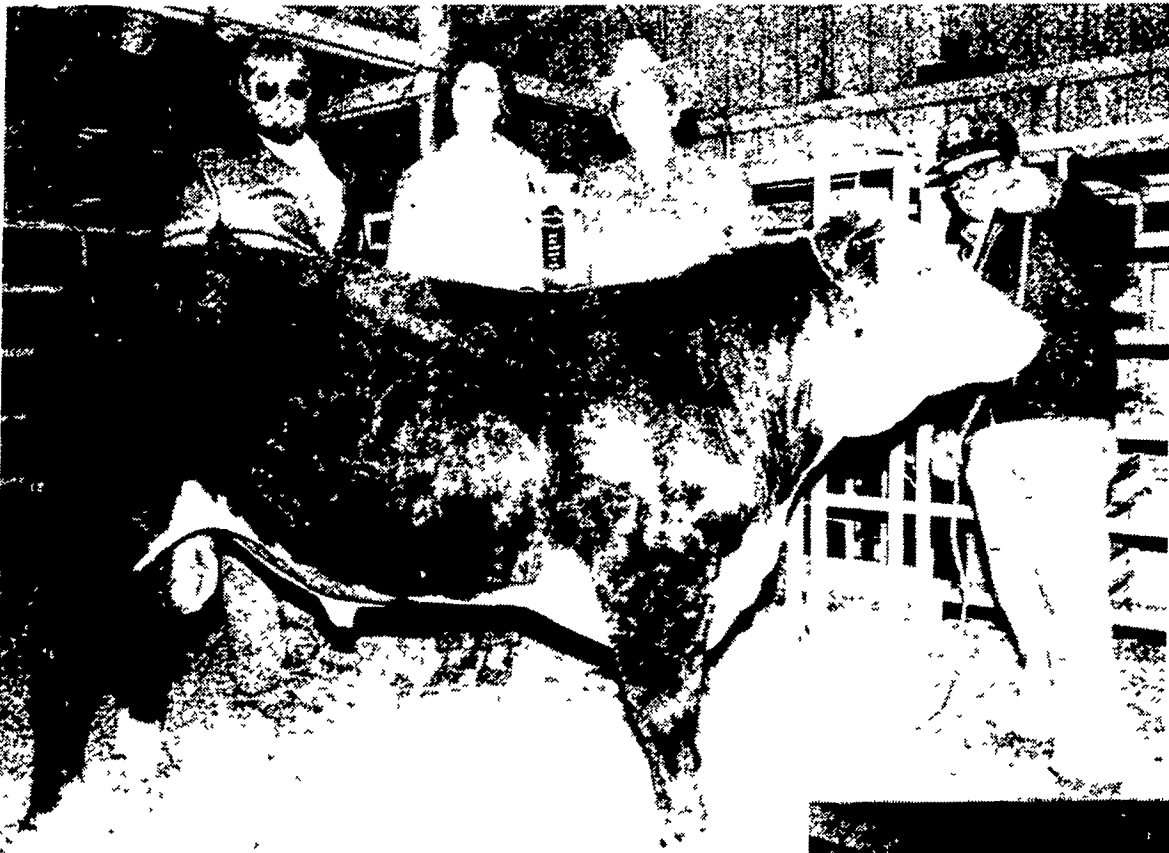
Huckleberry Hall Farm, Smithsburg, also consigned the top-selling Polled Hereford bull at Saturday evening's sale. HHF Bets Lad 11N brought a bid of \$1,025 from Donald and Wanda Eader of Mt. Airy, Md. The March 1981 son of PRL 7 Bet 517B will be joining the other 25 head of registered Polled Herefords on the Eaders' 35-acre farm.

The show's senior heifer champion was Lot 35 in the sale. This Bet daughter was consigned by Dr. Chia Chuen Su of Hagerstown, Md. and sold for \$975 to William and Louise Fisher, owners of Fisher's Poplar Luck Farm, Westminster, Md. The Fishers operate a custom feedlot at their farm and direct market finished steers to customers. A herd of 20 Polled Herefords cows help to supply some of the feeder cattle that go through the lot.

One extra special consignment that sold at the Saturday evening sale but carried no lot number was a heifer donated by Ed and Anna Snook of Cedar Hill Farm, Clearspring, Md. The heifer actually sold twice, with the gavel dropping once on a bid of \$1,250 by five members of the Maryland Polled Hereford Association, Inc.: Calvin Saylor, Rocky Ridge; George Brennan, Tamsey Farm, Easton; Glenn Bachtell, Huckleberry Hall Farm, Smithsburg; Fred Archibald, New Market; and Frank Darcey, Spring Bottom Farm, Fairfield, Pa.

The donated Polled Hereford heifer brought a total of \$1,675 dollars when the final bid was recognized. Proceeds of this sale are going towards the Maryland Polled Hereford Queen fund.

Altogether, 51 females and 5 bulls sold for an average of \$770.—SM



Donald and Wanda Eader, left, purchased another Huckleberry Hall Farm consignment, the afternoon show's champion bull. Holding the champion's ribbon is consignor Glenn Bachtell with manager Sam Hunter at the halter of HHF Bets Lad 11N.

William and Louise Fisher, Westminster, Md. bought the sale's senior champion female, a Bet daughter consigned by Dr. Chia Chuen Su, Hagerstown, Md. With the Fishers is Maryland Polled Hereford Assn. president Ronald Mills, far left, a 12-year veteran in the Big Bold Breed business.

