

Public Sales Register

Closing Date - Monday, 5.00 P.M.
of each week's publication

SAT. APR. 24 - 12 Noon. Located in Honesdale, PA. 11th Annual Wayne Co. Calif Sale. Remsburg Sale Service. Sale Chairman Kevin Burligh, RD 1 Pleasant Mt., PA.

SAT. APR 24 - Public Sale of Personal Property and Antiques Located 506 W. King St., Lancaster. Florence Ream Estate, Henry Merrig, Ex Randal Kline, Lloyd Kreider and Roy Good, Jr., Auctioneers

SAT APR 24 - 9 A.M. Public Sale of Farm Machinery, Tools, Antiques Collectibles, Household, Misc and Guns Located 4 mi west of Pillow, PA, 6 mi east off Rt 147, 4 mi east of Malta Violet A. Lenker, Owner Dockey and Dockey, Auctioneers

SAT APR 24 - Public Sale of Farmette, Acreage or Farm Located in eastern end of Juniata Co near Richfield Long Bros Auctioneers

SAT APR 24 - 9:30 A.M. Public Sale of Antiques, Household Goods and Farm Machinery Located along the Shaffer Church Rd., between Brodbeck AMP plant and Shaffer church near Wehrly's Auction Room Lizzie Caslow, Owner Charles L. Wehrly and Son, Auctioneers

MON APR 26 - 6:30 P.M. Public Sale of Real Estate.

Located on Scotland Rd., East Drumore Twp., Lanc Co., PA, 1 mi. south of the Buck David B and Betty J. Hess, Owners. E.M. Murry and Associates, Auctioneers

SAT. APR 27 - 9:30 A.M. Annual Machinery Sale at the G & M Livestock Market, Duncansville, PA

SAT APR 27 - 10 A.M. Special Spring Consignment Auction of Farm Machinery, Construction Equip., Trucks and Tools Location Wilson's Auction Sales Inc, Rt 113, 1 mi south of Lincoln, DE

TUES APR 27, 5:30 P.M. Farmersville Auction in Farmersville, 3 mi East of Brownstown, Lancaster County, Pa John J. Rutt, Auctioneer

TUES APR 27 - 7 P.M. Public Sale of Land Parcels Located approx 3 mi west of Pillow, PA, off Rt 225, along the Malta Rd, approx 40 mi north of Harrisburg, 20 mi south of Sunbury Estate of William L. Deppen Dockey and Dockey, Auctioneers

WED APR 28 - 6:30 P.M. Public Sale of Feeder Cattle and Pigs Located in Hagerstown, MD Four States Livestock Sales

WED APR 28 - Inventory Reduction Sale of Farm Machinery at Miller's Sales and Service Inc, Stewartstown, PA

WED APR 28 - 6:30 P.M. Feeder Sale Located in Hagerstown, MD 301-733-8120 Four States.

THURS APR 29 - 5:30 P.M. Public Sale of Antiques, Collectibles, Household Goods, Tools and Misc Located on Main St., Valley View, PA, Rt. 25, in the Former Movie Theater. Estate of Irene Hentz Dockey and Dockey, Auctioneers.

THURS APR 29 - 10:30 A.M. Public Sale of Farm Equipment and Household Goods Located off Rt. 487 - 6 mi west of Bloomsburg off Rt 254 Millville-Rohrsburg Rd) 35 mi east of Millville, PA, McHebry Hill Boyd Harvey, Owner Gele L. Derr and Frank Stackhouse, Auctioneers

THURS APR 29 - 10 A.M. Public Auction of Construction Equipment, Farm Machinery and Construction Tools To be held at 195 Grubb Ave., N. Lebanon Twp., Lebanon Co., PA Take Maple St north towards Mt Zion and turn right onto Kercher Ave and left onto Grubb Ave and bear left at Y to farm in lane at left Conditions by C & E Construction Harry Bachman, Auctioneer

FRI APRIL 30 - 6:30 P.M. Public Sale of 200-300 Head Open and Bred Holstein Heifers Located at the Belleville Livestock Market Belleville Livestock Market, Owners Mark Glick, Auctioneer.

FRI APRIL 30 - 5:30 P.M. Gap Auction. Antiques and Household Goods

sold at every auction Located off Rt. 41, Lancaster Turkey Hill Minit Market, cross RR bridge, Ira Stoltzfus & Son, Auctioneers

FRI. APR 30 - 10 A.M. Consignment Sale of Tractors and Horse Drawn Farm Equipment to be held at New Holland Sales Stables, Inc., New Holland, Pa For more information phone 717-354-4341

MAY

SAT. MAY 1 - 2 P.M. Public Sale of Real Estate. Located just east of Lanc, PA at Bridgeport where Rt 30 and 340 meet at 1631 Old Phila. Pk along Rt 340, East Lampeter Twp, Lanc Co., PA. Elmer G. Martin Estate Abe Diefenbach, Auctioneer

FEATURING FIRST AND THIRD MONDAY EACH MONTH GRADED FEEDER PIG SALE

1:30 p.m. Sharp!

Telephone 302-734-2016 or 234-4541

Tele-O-Auction - 302-284-4912

- Tele-O-Auction - Bid over the telephone.
- Easy to reach - Rt. 13, on South Bound Lane, approximately 10 miles South of Dover, Delaware.
- Quick Service - Load & Unload.
- No Dealer pigs.
- Pigs received after 7 a.m. until 11 a.m.
- Consignors - Paid day of sale.
- Veterinarian inspection on premises - Dr. Towers.
- State Graded.
- Pseudorabies Free State.

Auctioneers-Harry Barrett - Chester Lee Carroll

AUCTIONS OF ALL TYPES

ABSOLUTE AUCTION of FARM MACHINERY, TRUCKS & EQUIPMENT

On the farm, Horns Point Road, from Route 50 south of the Choptank Bridge take Route 343 to sale, 4 miles from CAMBRIDGE, MARYLAND (signs Posted).

SALE DATE: THURS., APRIL 15 at 12:00 Noon

FARM MACHINERY: VERSATILE 700 TRACTOR 4WD duals-555 Cummins diesel 3 pt. hitch-dual Hyd. outlets, JOHN DEERE 4430 D TRACTOR-duals-cab-air & heat, JOHN DEERE 4020 D TRACTOR-duals, JOHN DEERE 4010 D TRACTOR, INT. 400 TRACTOR, INT. H TRACTOR...MASSEY FERGUSON 750 COMBINE-hydrostatic-Air-heat-radio-straw chopper-extended throat-16' grain table-6 row 30" corn head...MF 8x16 Plows, MF 7x16 Plows, Hinkler 19' chisel plow, Case 12' chisel plow, Int. 480-20" disc, Case 18' disc, Brillion 21' pulvimulcher, Chattanooga 15' mulchmonster, varius cultpackers, JD 24' #F100H field conditioner, TYE DRILL 24 spout (like new), JOHN DEERE 7000 6 row planter-monitor-etc., JD 17 spout DRILL, Int. 6 row cultivators, Rolling cultivators 6 row, JD 6 row cultivators, JD 4 section rotary hoe mounted, Bush-hog 12' shredder, Midwest 12' harrow, New Holland 479. Haybine, New Holland 276 Baler, Eli Lilly hay tedder, Sprayrite 8 row recycling sprayer, 2 saddle tanks 200 gal. Agrotec tanks with equipment, 2 150 gal. saddle tanks, Tyler S.S. fert. spreader, 6' snow blower, 2 V grain wagons, JD #158 loader, Rhino 8' blade, Hay elevator, Ferguson ditcher, MF to AC adaptor for combine, battery charger, electric welder, clipper seed cleaner, etc.

TRUCKS: '68 Ford 3/4 ton pickup w/fuel tank & pump, '65 Ford F600 grain dump truck, '63 Ford F600 grain truck, '63 Chevy C60 grain dump truck, '60 Chev. C60 w/10 ton fert. tender, '63 Chev. C60 for parts, '63 Ford cabover for parts, etc.

GRAIN TRAILERS & EARTH EQUIP.: '76 Morgan 30' Alum. dump trailer, '66 Fruehauf 28' Alum. dump trailer, '68 Fruehauf 28' Alum. CASE 1150 BULLDOZER w/Hyd. angle & tilt blade-ROPS canopy, Gallion 15' moldboard hydraulic GRADER, CURRIES 5 yd. pan, CURRIES Bottomless 12' scrape...GE 2-way Radio system, etc.

"LUNCH"

Victor Laws & Jesse Swartz, Agents for Secured Parties & PALMER FARMS, INC.

Owners

Cambridge, Maryland HARRY RUDNICK & SONS, INC.

Sales Managers & Auctioneers Galena, Md. (301) 648-5601

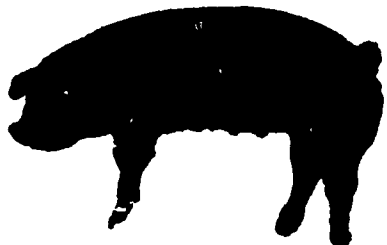
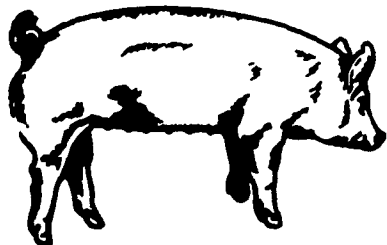
"NOTE": No small items; be prompt, sale starts at Noon...

Lawrence, Leon and Thomas Arnold 22nd PRODUCTION

SALE OF

Yorkshires

Durocs



Auctioneer: Harry Bachman, Annville, PA.

50 BOARS

Seven to eight months old, sired by "Charlie Hustle," "Lexington", "Future", "Motor", "Class." Feed efficiency in our herd has ranged from 2.96#/lb. gains in 1976 to a low in Delaware test-1980 of 2.24#/lb. gain. Our boars consistently sire #1 feeder pigs & market hogs.

50 BRED GILTS

Handmated. Due April, May, June, Yorkshire, Duroc, Crossbred.

50 OPEN GILTS

Ready to breed. Yorkshire-Duroc & Landrace.

High Quality crossbred FEEDER PIGS for July & August shows.

Cooperative delivery in Md.-Del. May 5th.

Soundness and production are top priorities in our breeding program. Our Yorkshire herd is unsurpassed in production per cow for herds this size. Our animals have done well in test stations. Pennsylvania's 1st Superior Certified Duroc Meat Sire came from our herd. We also had the top indexing boar over all breeds, Pa. State 1979 ("Hustle") and the top boar in Delaware 1980 (Explorer).

All animals vaccinated for Erysipelas & Lepto & Rhinitis. Validated Brucellosis & Pseudorabies Free herds.

Friday Evening, April 23

6:00 P.M.

Sale to be Held At the Lebanon Area Fairgrounds (Cornwall & Evergreen Roads, 1 1/2 miles south of) Lebanon, PA.

CALL OR WRITE

Yorkshires

Leon L. Arnold, R D 7, Box 705 Lebanon PA - 717 273 5880

Durocs

Lawrence Arnold, 1245 Cumberland St Lebanon, PA 717-272 9827

CATALOGS AVAILABLE APRIL 15th
NEXT SALE AUGUST 20, 1982

PUBLIC SALE

of Farm Equip.,
Tools & 20 Tons of Corn
MONDAY, APRIL 12
at 12:00

Located along Cinder Rd., R.D. #2, New Providence, Lancaster Co., Pa. From New Providence at fish ponds take Cinder Rd. 1 mi. south to sale.

Ford (Sauder) manure loader (new); 16' Mayrath grain auger w/motor; New Idea manure spreader on rubber; flat bed wagon; A.C. hay crumper; 3 pt. 2 row corn planter; Ford 3 pt. weeder & pulley wheel; D.B. garden tractor w/cultv.; Mellinger garden tractor; truck racks; pig feeder; locust posts; metal stakes; elec. fencers; heaters & fan; power tools; truck tools box; hand shop & garden tools; misc. hardware & lumber. NO OUT OF STATE CHECKS ACCEPTED. Food served.

Sale by,

MRS. BRANDT T. HIPPLE

Howard Shaub, Auctioneer 464-3541 and Roy C. Probst



ABSOLUTE PUBLIC AUCTION

"This Valuable Farm Will Sell Regardless Of Price To the Highest Bidder" 250 Acre Nippenose Valley Farm Located in Clinton County, Crawford Township. Farm located along Groupe Road on the outskirts of village of Rauchtown, 8 miles south of Jersey Shore on Route 880. "Watch for Auction Arrow."

SAT., APRIL 17, 1982

At Precisely 2:00 P.M.

Buildings & Improvements Include:

2 1/2 story frame house - first floor: large covered concrete porch, very large living room with fireplace and Schrader wood stove, hardwood floors, others with wall to wall carpet. Ornate metal ceiling found in living and parlor rooms. Oil hot air heat. Complete summer kitchen with large windows on the southern exposure, 2 open staircases, 1 carpeted. Large roomy kitchen with cabinets and appliances - Frigidaire refrigerator, Maytag washer, 4 burner Magic Chef gas stove with grill, Medium size parlor room, small den. Second floor: 5 medium size bedrooms, some with wall to wall carpet, some nicely decorated, full bathroom, upstairs enclosed porch, full attic, 1/2 basement.

Barn

2 story frame bank barn - large partially enclosed confinement lot, fence line bunk feeders, cattle chutes and headgates, various large cattle confinement pens, other areas consisting of concrete pads and bunk feeders for outside pasture feeding.

2 trench silos with approximately 100 ton capacity per silo.

Large steel sided frame calving shed.

2 car cement block garage, 2 large wire corn cribs.

1 1/2 story frame tool shed with concrete floor.

Adjacent to house is large frame butchering shed with fireplace.

Land Improvements Include:

Approximately 100 Acres Tillable; Approximately 150 Acres Pasture & Woodland; Farm Pond, Creek, Several Springs.

TERMS: 10% down day of auction, balance within 30 days or time agreed upon.

Immediate possession of all tillable land given upon request.

Not Responsible For Omissions and Errors On Printed Material.

Lewis Stueberger, Attorney

Lock Haven, Pa.

717-748-3296

Sale For

MR. & MRS. C. ROBERT SHERTZER

Phone: 717-745-3543 or 302-995-3730

Auction Conducted By The:

J. OMAR LANDIS AUCTION SERVICE

Jay M. Witman

Box 501, Apple & Robert Streets, Ephrata, PA 17522

717-627-0789 - 717-665-5735

"Our Services Often Copied, But Never Duplicated."