

Farmland Preservation ~ It's worth it



Wakefield, Lancaster County

--Photo by Dick Anglestein

Because you don't know much about termites, you should know about Ehrlich.

This is an age of specialization. Our speciality is termite problems. Ehrlich is an experienced, knowledgeable pest control company. We bring extensive know-how, superior equipment, and an attitude of pride in our work to each termite job. Since 1928, Ehrlich has painstakingly built a reputation for dependability, and we have a commitment to maintaining that reputation.

In an age of specialization, you'd better be good at what you do. And we are, and will continue to be.

Call us.

717-397-3721
1278 Loop Rd.
Lancaster, PA



Ehrlich

Since 1928

... Termite control is too important to trust to anyone else

Introducing to the Mid Atlantic Area

The Nitterhouse Upright Bunker Silo

Featuring a single component design for fast erection and completion. The sections bolt together and the tongue and groove creates a sealed wall surface

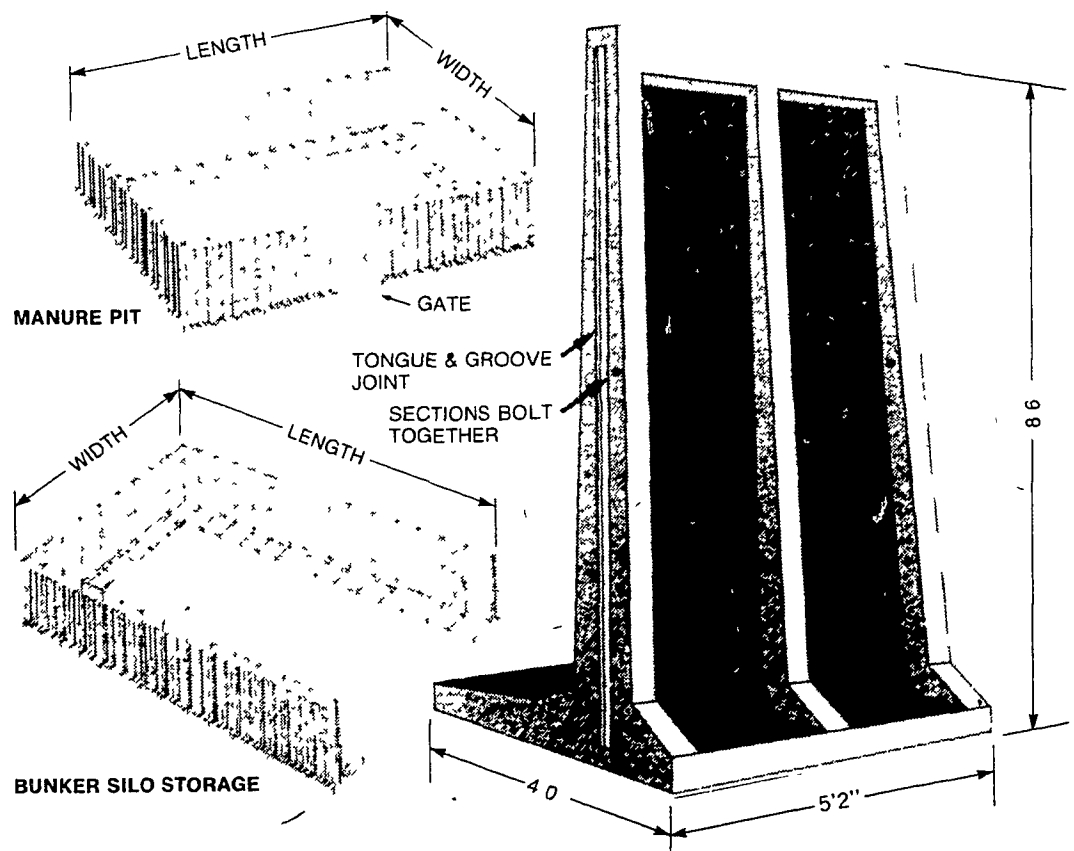
The sections may be dismantled and re-located, customers may select any length or width in increments of 5 feet 2 inches

In addition to silage storage, these upright units may be used as retaining walls or manure pits

TONNAGE TABLE FOR 8 FT SIDEWALLS*

LENGTH	30 WIDE	40 WIDE	50 WIDE	60 WIDE
50	323	432	540	646
75	376	504	630	753
100	431	576	720	862
125	485	648	808	971
150	539	720	900	1078
175	593	792	989	1187
200	648	864	1080	1296
225	688	936	1170	1376
250	755	1008	1260	1510
275	808	1080	1350	1616

BASED ON LEVEL FILL WITH 45 LBS PER CU FT



Nitterhouse

Concrete Products Inc.
Farm Products Division
Box N Chambersburg, Pa. 17201
717-264-6154