

Limousin Foundation announces genetic trait leaders

DENVER, Col. — The North American Limousin Foundation released its 1982 Limousin Sire Summary and has identified five bulls leading the breed in economically important traits.

Of the four traits measured — birth weight, weaning weight, yearling weight and daughters' first calf weaning weight — on bull is above average in all. Owned by Sweetwater Plantation of Thomson, Ga., 2 Hanchon AV Hagadal, known as Hanchon, produces calves light at birth yet above average in milk production.

The bull leading the breed in birth weight is Erode, owned by Ben and Mark Turbyfill of Madill, Okla. Performance data on the bull shows his calves average more than five pounds lighter than the average of all the bulls in the summary. Birth weight is important because it reflects calving ease — heavier calves at birth tend to result in more calving difficulties.

The trait leader for adjusted 205-

day weight this year, as well as last, is Dakota Chance 77 owned by Harold Rinehart of Pompadour Hills Ranch, Highmore, S.D. This bull's data show his calves weigh nearly 25 pounds heavier at weaning than the other bulls in the summary. The adjusted 205-day weight is a measure of growth from birth to weaning and of the dam's milking ability.

Showing the depth of his performance program, Rinehart and James Simmons of Ocala, Fla. own adjusted 365-day weight trait leader, Boventure Farfelu. This bull has lead the yearling weight category since 1980, producing calves that weigh 40 pounds more than the sire summary average. Adjusted 365-day weight, or yearling weight, is the notable economically important trait as it is more indicative of growth potential through market age than weights taken earlier in life. In addition, it is associated with gain efficiency and percent retail yield.

The final trait tested in the

Limousin Sire Summary, daughters first calf weaning weight, is led by Dudle, owned by Derochie Ranches of Calgary, Alberta, Canada. This trait evaluates milk production by measuring weaning weights of heifers' first calves. The data shows Dudle's daughters wean calves, as first calf heifers, weighing nearly 10 pounds heavier than average.

In addition to the first place Erode, bulls leading the breed in calving ease are Elite in second, owned by Dudley-Thompson Cattle Company of Hampton, Iowa. Dr. David Berezan of Stettler, Alberta, Canada owns Easter, the bull in third. Elegant, owned by Harold Rinehart of Pompadour Hills Ranch is the fourth easiest calving bull and Esca, owned by Howard Putnal of Lee, Fla. is fifth.

In the adjusted 205-day weight category, second behind the leading Dakota Chance 77 is Godwin Golden Henri, owned by the Baker, Ore. firm of Steward

and Morrissey. McKown and Sons of Ardmore, Okla. and Leonard Wulf and Sons of Morris, Minn. own Dictator, the bull in third while Ripp-Fusee, owned by Ronnie Martin of Bainbridge, Ga. is fourth. O'Brien Farms of Pineville, Mo. own Elk River 106H, the fifth leading bull for weaning weight.

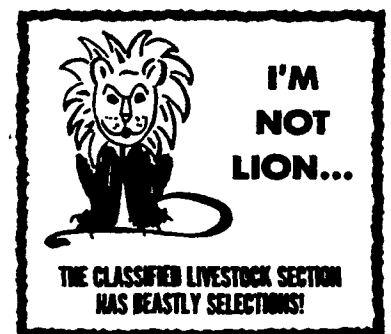
SY Niterider, owned by Symens Bros. of Amherst, S.D. and Holcomb and Yates of Stanton, Texas, is second in 365-day weight, behind Boventure Farfelu. Third is Mr. LCCO, a long-time high ranking bull owned by David B. Hatcher of X Bar H Ranch in Houston, Texas. Steward and Morrissey's Godwin Golden Henri, ranked second in weaning weight, is fourth in yearling weight and Diamond "A" Farfelu, owned by Al Ogren and Sons of DeSmet, S.D. is fifth.

Second in daughter's first calf weaning weight, behind Dudle, is Favori, owned by American Breeders Service of DeForest,

Wis. The bull leading the breed in calving ease, Erode, comes in third and Farfelu, owned by W.R. Hager of Weinert, Texas is fourth. ABS rounds out the category with their bull, Espoir CIM 70.

The 1982 Limousin Sire Summary reports progeny performance on 454 bulls, up from the 340 animals measured last year. Of the 454 head in the summary, 29 are above average in three of the four traits measured.

For more information and a copy of the 1982 Limousin Sire Summary, contact the North American Limousin Foundation, 100 Livestock Exchange Building, Denver, CO 80216.



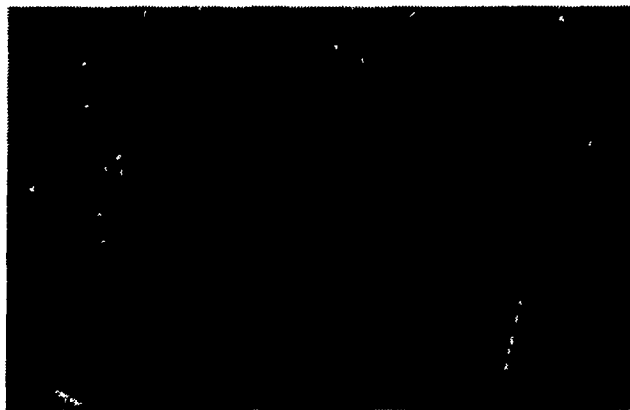
IF YOU NEED SPACE, YOU NEED A UNI-ARCH!

All Inside Space Useful
Second Floor May Easily Be Built In
Arches In One Continuous Piece
From Foundation to Peak

Arch Distributes
Roof Load To Foundation
Drive In With Your Dump
Truck Raise The Bed

Drive In With Your
Tractor, Raise Your Lift.

24 to 50 Foot Widths
Center Heights
of 15 to 26 Feet



A Small Building
with More Space

Arches Are Manufactured
In Our Local Plant



MANUFACTURERS of
LAMINATED RAFTERS
and WOOD ROOF TRUSSES
RIGIDPLY RAFTERS, INC.
RICHLAND RD 1, PENNSYLVANIA 17087
Telephone: (717) 866-6581

Laminated Uni-Arch Are...Versatile
Strong, Economical

CALL US OR WRITE FOR MORE INFORMATION

GREENVIEW
LIQUID PLANT
FOODS LTD.

GREENVIEW IS:

- manufactured from the highest quality raw materials available to the fertilizer industry.
- a true solution with a near neutral PH and a low salt index
- a non-corrosive product
- will not settle out or freeze

GREENVIEW APPLICATIONS

- corn
- small grains
- beans
- vegetables

GREENVIEW INGREDIENTS

INCLUDE:

Nitrogen (N)
Aqua & Urea

Phosphate (P2 O5)
Phosphoric Acid
(white acid)

Potash (K2O)
Potassium Hydroxide

Available analysis include:
9-18-9, 6-24-6, 3-18-18

GREENVIEW ADVANTAGES:

- An effective, easy to use starter fertilizer
- A high quality product the average farmer can afford

Distributed in Indiana, Ohio,
Michigan, Pennsylvania, New York,
New Jersey, New Hampshire

For more information contact:

**GREENVIEW LIQUID
PLANT FOODS LTD.**

R.R. #1, Stratford, Ontario N5A 6S2
(519)-625-8016