


Livestock market and auction news

THE OLD FARMER'S ALMANAC

April 5-11, 1982
Warm and dry, hope fair sky.

Grass fire danger now Circus elephant Jumbo arrived in United States April 9, 1882 Full moon April 8 (Thurs) Average length of days for the week, 13 hours, 3 minutes The peepers are peeping now First church organ appeared in France 787 A D When April blows its horn, 'tis good for both hay and corn



Ask the Old Farmer: Did Henry Wadsworth Longfellow find his inspiration for "The Village Blacksmith" in a town in Connecticut? T.K., Hartford, CT

We have been told that he knew the blacksmith in the town of his birth, Portland, Maine, that the smith's name was Phinney, and that he had a daughter who was admired by Longfellow

Home Hints: Salt on your fingers when cleaning fowl or fish prevents hands from slipping

OLD FARMER'S WEATHER FORECAST

New England: Rain, snow in mountains, seasonable to cold, to start, cloudy and cold, rain and snow north, midweek, then rainy, cold

Greater New York-New Jersey: Week's beginning brings rain, colder, then sunny, midweek, week ends with heavy rain, cold temperatures

Middle Atlantic Coastal: Very beginning of week, rainy and cool, midweek is cloudy and cool, cold, rainy weekend

Piedmont & Southeast Coastal: Mild, rainy to begin week, then cloudy and cold, turning colder, with rain, end of week

(All Rights Reserved Yankee, Inc. Dublin, NH 03444)

Peoria Cattle

Thursday, April 1
Report supplied by USDA
Compared to last week, slaughter steers closed steady to .50 lower. Heifers steady, instances .25 lower than the previous weeks extreme top. Cows and bulls sold steady to firm. Trade opened the week with buyers adjusting live bids downward as the carcass and boxed beef worked lower with moderate to heavy supplies. The small midweek run forced buyers to erase part or all of Monday's late downturn and finish the week at near steady levels. Receipts this week about 1900 as compared to 2100 a week ago and 2828 last year.

SLAUGHTER STEERS: Two loads Choice and Prime 3-4 1265-1325 lbs. 68.00-68.50. Choice 2-4 1000-1350 lbs. 65.00-67.50, largely 66.50-67.50. Mixed Good and Choice 2-3 950-1200 lbs. 64.00-66.50. Good 61.00-65.00 Holsteins; Good and Choice 1-3 1175-1300 lbs. 56.00-58.00. Good 54.00-56.00.

SLAUGHTER HEIFERS: Choice, few Prime 2-4 950-1050 lbs. 65.00-67.00. Couple part loads 1015-1025 lbs. 67.50. Mixed Good and Choice 2-3 900-1050 lbs. 63.00-65.00. 850-900 lbs. 61.00-64.00. Good 52.00-63.00 mostly 52.00-57.00 on 700-800 lbs. consignments returning to farms.

COWS: Utility, few Commercial 1-3 40.00-44.00. Cutter 36.00-40.00. Canner and Low Cutter 34.00-37.00. Package thin, lightweights 30.00.

BULLS: YG 1-2 1100-1800 lbs. 45.00-52.50.

lamb 5.00-7.00 lower. Supply mainly old-crop shorn slaughter lambs.

NEW CROP SPRING SLAUGHTER LAMBS: Scattered lots Choice and Prime 81-101 lbs. 62.50-64.00. Small lots Choice 47-62 lbs. for Easter trade 73.00-87.00.

OLD CROP SHORN SLAUGHTER LAMBS: Choice and Prime 85-115 lbs. with mostly No. 1-2 pelts 58.00-64.50.

OLD CROP WOOLED SLAUGHTER LAMBS: Part deck Choice and Prime 111 lbs. 60.00.

FEEDER LAMBS: Few small lots Choice 60-85 lbs. 40.00-45.00.

EWES AND LAMBS PAIRS: Small lot good ewes with baby lambs at side 34.00 per pair.

St. Louis Sheep

Thursday, April 1
Report supplied by auction
Receipts about 600 head. Compared last week, slaughter

Lebanon Valley Auction

Fredericksburg, Pa.
Tuesday, March 30
Report supplied by PDA

CATTLE 202. Compared with last Tuesday's market, slaughter cows 75 cents to \$1.75 lower. Few Low Choice 960-1180 lbs. No. 2-4 slaughter steers 63.25-65.50, Good 57.75-62.85, Standard 53.50-57.85. Few Good slaughter heifers 55.75-60.25. Utility & Commercial slaughter cows 39.50-42.75, few to 44.25. Cutters 38.25-41.25. Canner & Low Cutter 34.50-38.50, Shells down to 30.00. Few Good slaughter bullocks 48.00-54.10. Yield Grade #1 1000-1945 lbs. slaughter bulls 47.25-54.00. Few Medium Frame #1 470-770 lbs. feeder steers 47.00-56.00.

CALVES 200. Few Choice vealers 89.00-98.00, few Good 71.00-79.00, few Standard & Good 110-120 lbs. 60.00-65.00, 70-100 lbs. 47.00-54.00, Utility 50-80 lbs. 40.00-45.00. Farm calves, holstein bulls 90-125 lbs. 61.00-90.00, mostly 75.00-85.00; holstein heifers 80-140 lbs. 68.00-104.00.

HOGS 230. Barrows & gilts 50 cents lower. US No. 1-3 200-240 lbs. barrows & gilts 50.75-51.60, one lot 53.25, one lot No. 2-3 225 lbs. at 50.00, No. 1-3 160-175 lbs. 44.00-45.50. Sows \$2 higher. US No. 1-3 300-600 lbs. sows 44.00-47.00. Boars 34.00-36.00.

FEEDER PIGS 18. One Lot US No. 1-3 85 lbs. feeder pigs 67.00 cwt.

SHEEP 53. Choice 30-60 lbs. spring slaughter lambs 86.00-110.00, couple 115.00, Few Slaughter ewes 14.00-18.00.

GOATS 37. Large Goats 33.00-50.00, kids 26.00-36.00 per head.

Valley Livestock

Valley Stockyards
Athens, Pa.

Monday, March 29

Report supplied by auction
Reported receipts of 216 calves, 104 cows, 11 bulls, 14 heifers, 13 steers, 64 hogs, 232 lambs, 12 sheep. Cattle market steady; Calf market some easier.

Holstein Hfr. Calves to 70.00; Veal Calves to 80.00; Bobs, 90-100 lbs. 50.00-68.00; Bobs, 80 lbs. and down 40.00-50.00; Grassers & Feeders 37.00-72.00; Lambs light easier to 137.50, heavy to 78.00; Sheep to 27.00; Hogs, 200-250 lbs. 45.00-51.00; Sows 38.00-46.00; Boars 32.00-38.00; Pigs 15.00-38.00; Heifers 41.00-46.75; Steers 44.50-52.00; Steers, feeder 39.00-62.00; Bulls 47.00-51.00; Cows, utility 39.00-44.00; Cows, fat 38.00-40.00; Cows, medium 36.00-37.00; Cows, poor or small 32.00-34.00; Horses small to 450.00; Ponies to 75.00; Goats 128 head to 53.00.

Hay 57.00-60.00 per ton.
Feeder Sale 1st Monday of Each Month.

Dairy Sale 3rd Thursday of Each Month.

Home of the complete
Yorkshire: sound,
meaty, productive!



KARL EHMER FARMS
"We breed the Best Slaughter the rest!"

Rd 2 Noxon Rd
Wappinger Falls, NY 12590
Farm: 914-223-5976
Max Heflich, Mgr. 914-471-1438
Get the "Concrete" difference
Get Ehmer Yorkshires

NEW HOLLAND SALES STABLES, Inc.

12 Miles East of Lancaster
on Route 23, New Holland, Penna.

WEEKLY FEEDER PIG SALE EVERY WEDNESDAY

Sale to Start at 1:30 P.M.

We Will Receive Your Pigs Anytime From 7 A.M. Wed. Morning

State Graded Until 12 Noon.

All pigs inspected by State Approved Veterinarian.

State tags available at our office for you to tag pigs at home to save 25 cents tagging charge.

Tags delivered if you call 717-354-4341 our office in advance.

Calf Sale To Be Held Every Thursday At 3:30 P.M.

NORMAN KOLB
717-397-5538

ABE DIFFENBACH
717-393-4464

ONE STEP TRANSIT
RAY R. HARBOLD
R.R. 1 • Hershey, Pennsylvania 17033 • 717 964 2248

Providing expert care and cleanliness for your cattle by either goose-neck or tractor trailer trucking
LOCALLY or NATIONWIDE



Consignment Sale of Hay, Straw & Corn EVERY TUESDAY


1 P.M.

Located at Leinbach's Farm Market, intersection of Rts. 11 and 533, Shippenburg, PA.

Big Demand for Good Quality Hay. Bring a load, Buy a load.

Melvin Sensenig, Auctioneer

J.B. KELLER & BRO. DAIRY COWS



Mount Joy, Pa. 17552

REGISTERED HOLSTEIN COWS AND HEIFERS

GLENDELL ARLINDA CHIEF, 1st calf due 6/22/82 to Roybrook Starlite. Dam- Astronaut. 2nd Dam-Apollo.

MARSHFIELD ELEVATION TONY, 1st calf due 7/30/82 to Kler-Vu Charisma. Dam- Stylemaster Wizzard. 2nd Dam-Astronaut.

MARSHFIELD ELEVATION TONY, 1st calf due 6/13/82 to Persuador. Dam-Perseus Leader.

WOODBIND MILKMAN, 1st calf due 6/13/82 to Persuador. Dam- Sunshine Chief. 2nd Dam-Marge Prince Rex.

ROUND OAK RAG APPLE ELEVATION, 81 pts. 4th calf due 5/4/82 to Bootmaker Mannix 4-2, 322, 17,046, 600, 3.5.

HILLHAVEN STANDOUT JOB, 80 pts. 2nd calf due 5/30/82 to Very.

WHITTIER-FARMS APOLLO ROCKET, 3rd calf due 6/19/82 to Fury Ivan 3-0, 354, 17,917, 646, 3.6. Dam-Ivanhoe Star.

REGISTERED HOLSTEIN BULLS

S-W-D VALIANT, born 1/30/81. Dam-85 pt. Conductor, 3-0, 322, 24,964, 865, 3.5.

CARLIN-M IVANHOE BELL, born 8/19/81. Dam- 88 pt. Elevation 3-6, 337, 28,251, 1,062, 3.7.

SHARDALE ARLINDA CHIEF JEMINI, born 7/9/81. Dam- 85 pt. Admiral Jay 4-11, 365, 30,933, 932, 3.0.

ENG-AMER IVANHOE JERRY, born 6/3/81. Dam-88 pt. Elevation 6-4, 366, 27,280, 1,033, 3.7.

Transportation and financing available.
STEVE KELLER **BOB KELLER**
717-653-2284 717-653-1523
Office: 717-653-4851

BUTCHER SHOP And Country Store

Rt. 645 (2 Miles N. of Rt. 422)
Myerstown, Pa. 717-933-4104

CUSTOM SLAUGHTERING

- Beef, Pork, Veal, Lamb...Killed, Cut, Wrapped And Frozen To Your Liking.
- Hams and Bacon Cured And Smoked... Dried Beef...Fresh & Smoked Sausage.



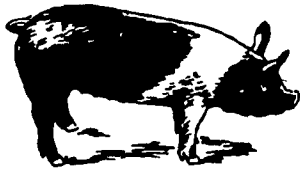
BOLOGNA-MADE FROM YOUR MEAT!

- Lebanon or Sweet Bologna...Pork Roll... Hot Dogs...Ring Bologna.



Our Plant is USDA Federally Inspected, So You Can Resell Your Bologna At A Retail Price!

CALL FOR PRICE LIST TODAY!



EMERY'S BUYING STATION

OPEN TO RECEIVE YOUR MARKET HOGS

AT THE GREEN DRAGON MARKET
RD 4, EPHRATA, PA 17522
1 MILE NORTH OF EPHRATA
ON NORTH STATE STREET.

HOURS
MONDAY, TUESDAY, and WEDNESDAY
6:00 A.M. to 11:30 A.M.

YOU ARE PAID FOR YOUR HOGS IMMEDIATELY

Ken & Lois Emery, Proprietors