

NEMA

(Continued from Page A35)

Washington D.C. that are of interest to egg producers. One of the key issues, House Resolution 305, calls for hearings to be held on the animal welfare issue. Kulla reported that Congressman Tom Harkin, who has control of the bill in his subcommittee, feels he needs to hold hearings because of the

large number of letters he's been receiving from welfarists.

Kulla noted that if Harkin fails to hold hearings, the resolution could be captured from his agriculture subcommittee by the Science and Technology Committee. The UEP legislative director announced that Sec. Block has gone on record in opposition of Res. 305.

Should egg producers be alarmed if hearings are scheduled?

According to Kulla, "No." He pointed out that the CAST reports on animal welfare are already completed and will negate any arguments posed by welfarists. He also reassured the group by noting UEP already has guidelines for producers on proper care of chickens.

Kulla reported UEP has sent a letter to USDA's Statistical Reporting Service in which the

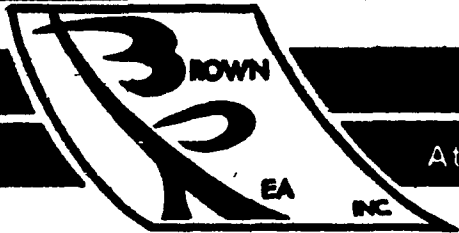
organization requested the SRS reverse its decision to combine hatching and table egg numbers in its reports. The reports have been limited to quarterly instead of monthly due to budget problems. "We can live with the quarterly reports," said Kulla, "but combining the two types of eggs renders this information useless."

Looking at nutrition issues,

Lancaster Farming, Saturday, April 3, 1982—A37

Kulla warned the producers "the cholesterol issue is on the back burner of the stove. It will be a hot issue when the sodium controversy comes off the front burner."

Attorney George Isaacson and Production Manager Bob Thorpe, with Ricca Egg Farms, Billerica, Mass. shared their thoughts and advice about farm labor relations and record keeping, respectively.

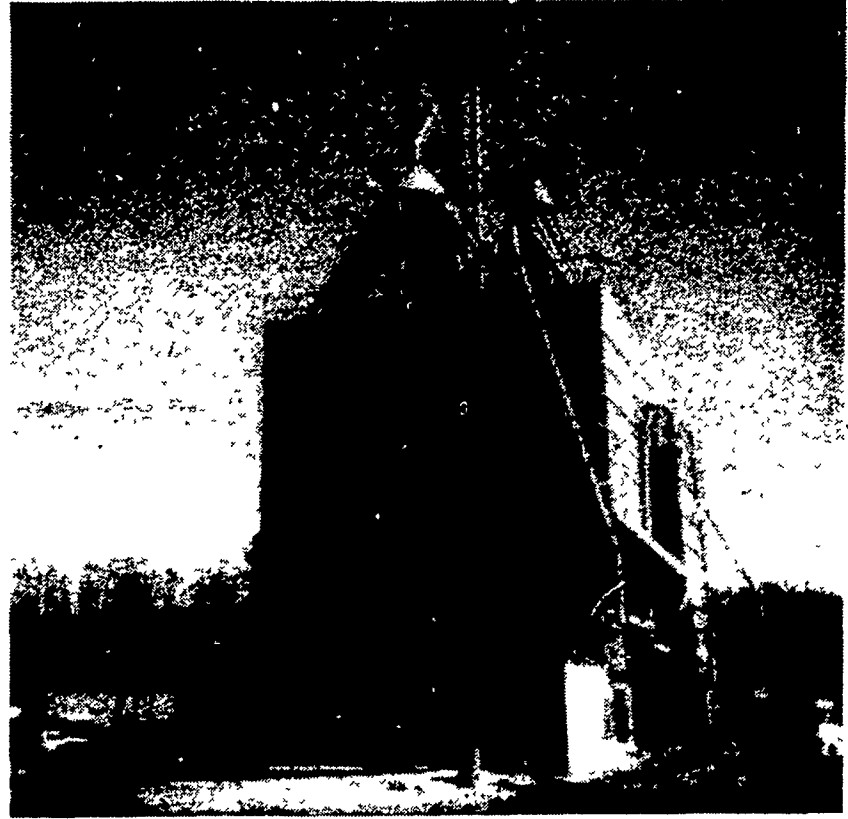


Atglen PA 19310 • Phone 215-593-5149

NOW EXPANDING WITH MODERN MILLING FACILITIES

Specializing In:

- Hand calculated dairy programming using the services and products of CARNATION LAB-MIX
- Computerized dairy programming using the services and products of X-TRA FACTORS



Listed below are DHIA reports of some of the finest Dairy Farmers in Chester County and Lancaster County. We congratulate these farmers and consider it a privilege to work with them and all others.

Chester County

| | No. Yrs. | Cows | Milk | Fat | | No. Yrs. | Cows | Milk | Fat |
|--------------------|----------|--------|------|------------------|----------|----------|------|------|-----|
| MELVIN STOLTZFUS | '79 33.7 | 19,628 | 795 | DUNWOOD FARM | '79 38 | 17,738 | 750 | | |
| Cochranville | '80 38.5 | 20,488 | 806 | Oxford | '80 43.3 | 18,881 | 750 | | |
| | '81 35.9 | 21,527 | 840 | | '81 48.6 | 18,163 | 711 | | |
| JOHN UMBLE | '79 43.2 | 17,661 | 708 | BEN BEILER | '79 52.3 | 17,752 | 666 | | |
| Swampy Hollow Farm | '80 44.0 | 17,664 | 693 | Russellville | '80 42.2 | 16,532 | 616 | | |
| Atglen | '81 43.0 | 19,489 | 779 | | '81 56.4 | 18,648 | 704 | | |
| WILLOWLAND FARM | '79 60.0 | 17,164 | 633 | CHRIST STOLTZFUS | '79 51.9 | 16,194 | 594 | | |
| Atglen | '80 59.9 | 17,731 | 665 | Honey Brook | '80 52.9 | 18,532 | 667 | | |
| | '81 59.6 | 19,775 | 744 | | '81 54.8 | 19,187 | 688 | | |
| JONAS B. STOLTZFUS | '79 41.5 | 15,147 | 560 | DALE HOSTETTER | '80 49.5 | 17,487 | 628 | | |
| Honey Brook | '81 41.7 | 18,320 | 670 | Cochranville | '81 48.9 | 17,259 | 625 | | |
| | '81 41.7 | 19,149 | 719 | CALVIN BLANK | '79 50.3 | 14,889 | 555 | | |
| | | | | Atglen | '80 50.2 | 16,396 | 608 | | |
| | | | | | '81 52.9 | 17,096 | 646 | | |

Lancaster County

| | No. Yrs. | Cows | Milk | Fat | | No. Yrs. | Cows | Milk | Fat |
|--------------------|----------|--------|------|----------------------|----------|----------|--------|------|-----|
| ELVIN GRAYBILL | '80 64.0 | 14,465 | 522 | J. ROBERT METZLER | '80 40.1 | 15,741 | 579 | | |
| Nottingham | '81 49.3 | 16,300 | 596 | Christiana | '81 42.2 | 16,400 | 624 | | |
| HENRY U. STOLTZFUS | | | | ELAM K. STOLTZFUS | '80 43.1 | 16,159 | 577 | | |
| Honey Brook | '80 45.7 | 17,985 | 635 | Morgantown | '81 35.0 | 16,962 | 598 | | |
| | '81 44.8 | 21,048 | 754 | LEVI S. STOLTZFUS | '80 45.5 | 15,182 | 583 | | |
| JACOB S. STOLTZFUS | '80 43.6 | 16,564 | 618 | Honey Brook | '81 45.9 | 15,949 | 612 | | |
| Honey Brook | '81 42.8 | 18,435 | 680 | JOHN F. PETERSHEIM | '80 40.3 | 16,868 | 608 | | |
| BENUEL STOLTZFUS | '80 45.8 | 17,474 | 642 | Gap | '81 40.4 | 16,439 | 594 | | |
| Morgantown | '81 42.7 | 17,809 | 679 | OMAR SMOKER | | | | | |
| KENNETH BEILER | '80 55.5 | 15,341 | 581 | New Holland | '81 26.7 | 16,441 | 588 | | |
| Kinzers | '81 54.3 | 17,716 | 664 | LAWRENCE GARMAN | '81 45.8 | 16,277 | 553 | | |
| JOHN U. GLICK | '80 42.8 | 15,596 | 579 | Quarryville | '81 34.2 | 15,757 | 571 | | |
| Kinzers | '81 48.6 | 17,593 | 662 | STEPHEN F. STOLTZFUS | | | | | |
| JONAS B. KING | '80 40.1 | 16,419 | 591 | Gap | '81 | | 15,818 | 569 | |
| Morgantown | '81 40.5 | 16,804 | 620 | | | | | | |

*Feed *Fertilizers *Grain Seeds *Coal Chemicals *Animal Health Supplies *

CALL TODAY! OR STOP & VISIT US SOON