

Recipe for Guernsey enthusiasm

LOUISVILLE, KY. — To cook up a unique promotional sale be fitting a national Guernsey gathering, start by selecting consignments from 13 states all of which offer the depth of pedigree to be foundation cattle. Add \$8000 for premium money for a show that precedes the sale, blend in a generous portion of southern hospitality, and spice liberally with enthusiasm for the income producing potential of registered

Guernsey cattle.

Title the event the 19th Annual Kentucky National Guernsey Show and Sale and serve in large portions in one of the finest sale and show facilities in the country, the Kentucky Fair and Exposition Center, Louisville, Kentucky.

Consignors and buyers gathered last weekend in Louisville to participate in one of the premier sales of the Guernsey breed. The sale, sponsored by the Kentucky

Council on Agriculture and the Kentucky Guernsey Breeders' Association, is unique in its reputation of offering top premium money in its show classes and has established an enviable reputation for selling profitable cattle.

Despite a conflict of scheduling with the Pennsylvania Guernsey Breeders' annual meeting, the Keystone state was represented by two outstanding young cows catalogued Lots #1 and #2

respectively.

Catalogued Lot #1 was Co-Hill Farms B T Erica, consigned by Renee Anne Fava, Scenery Hill. This Big Tex daughter from a 90-point Sultan dam stood second in the 2-Year-Olds born in 1979 class. She sold for \$2,000 to the University of Illinois in the sale following the show.

Catalogued Lot #2 was Royal Glow DF Brandy, consigned by John & Ginger Myers, Green

Manor Farm, Littlestown, Adams Co. This fancy young cow sired by Dari Fayvor and from a milky maternal line topped the Junior 2-Year-Old class and sold to Minnesota bid for \$1,425.

Grand champion cow of the show was Golden Dew Favvora Terra, bred and consigned by Robert C. Griggs, Jr., Mustang, Oklahoma. She won the Four-Year-Old class and later topped the sale for a bid of \$2,300. Griggs also captured the

Junior Champion banner with his senior calf entry, Golden Dew King Henry's Prissy. This calf also commanded the second-highest selling price of \$2,250.

Reserve Grand Champion was pinned on the three-year-old entry consigned by Floyd Livingston, Union City, Ohio. Shawnee Transfer Toni later walked through the ring to bring a final bid of \$2,000.

Reserve Junior Champion, on a close placing by judge Joey Pendleton, Hopkinsville, Ky., went to Raemelton Deacons Posie, a



Posing with the Grand and Reserve Grand Champions of the Show are: left to right, Barney Hornback, director of Show and Fairs for the Kentucky Council of Agriculture; Floyd Livingstons with his Reserve Champion 3-

year-old; Kathy Campbell, Kentucky State Dairy Queen; Robert Griggs with his Grand Champion 4-year-old; and judge Joey Pendleton, Hopkinsville, Ky.



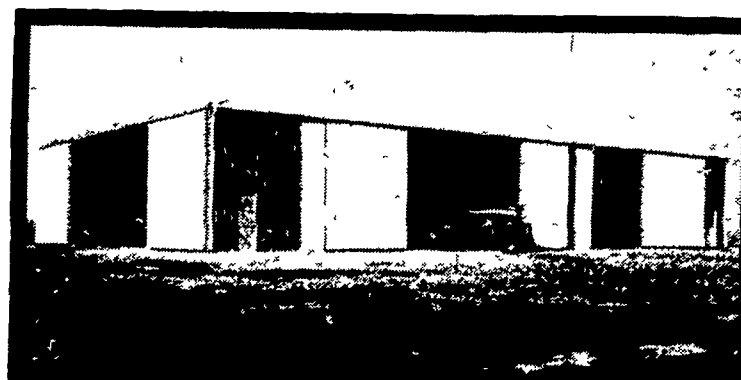
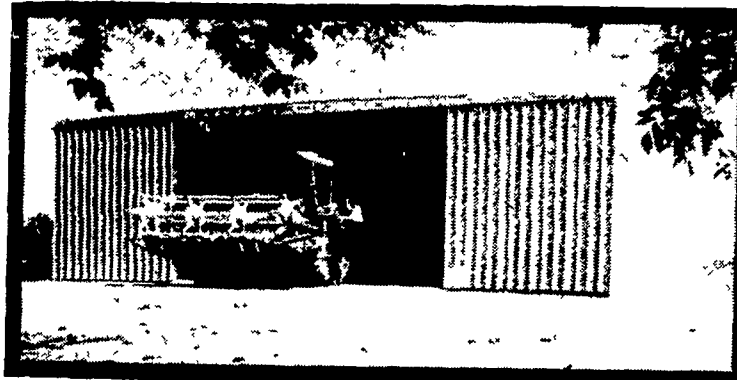
Barney Hornback, Ooltewah, Tn., director of Shows and Fairs for the Kentucky Council of Agriculture, right, presents a Kentucky Colonial's Commission to Ballard Bennett, A.G.C.C. Fieldman, left, for his outstanding service to Kentucky agriculture.



Renee Fava, Scenery Hill, is for consigning an animal to National Show and Sale. Place consignors by Gordon 'McD' Kentucky Guernsey Breeders'

Farmstead® Buildings by Butler

Special Prices on Butler Standard Buildings
Ends April 15, 1982



IDEAL FOR
GRAIN
OR
MACHINERY
STORAGE

SEE YOUR AGRI-BUILDER FOR SPECIAL PRICES

Program Ends April 15, 1982

Bethlehem  20 YEAR WARRANTY

More good news when specified as roofing or siding Galvalume is warranted, under exposure to normal atmospheric conditions for a period of twenty years against rupture, perforation, or structural failure.

LEASE BUILDINGS & BINS ON MONTHLY PROGRAM

BUTLER MFG. CO.

Attn. P.E. Hess
Box 337, Oxford, PA 19363

Dealer Inquiries Available in: Pennsylvania Counties: Armstrong, Indiana, Erie, Crawford, Warren, Elk, Cameron, McKean, Clinton, Lycoming, Sullivan, Wyoming, Luzerne, Columbia, Butler, Mercer, Lawrence, Beaver, Bradford, Susquehanna, Adams, Cumberland, York, New Jersey Counties - Sussex, Morris, Passaic, Atlantic, Cape May **No Dealer Fees.**

Name _____
Address _____
County _____ Zip _____
City _____ State _____
Phone _____
(include area code) LF

KNOXVILLE CONSTRUCTION
Knoxville, Pa. 16928
PH: 814-326-4188

A. E. ENGEL, INC.
P.O. Box 216
Marlton, N.J. 08053
PH: 609-983-4404

LEROY E. MYERS, INC.
Route #1, Box 163
Clear Spring, Md. 21722
PH: 301-582-1552

C & M SALES INC.
R.D.#1
Honesdale, Pa. 18431
PH: 717-253-1612

D. E. SMITH, INC.
Millintown, Pa. 17059
PH: 717-436-2151

ORVILLE MACK
P.O. Box 47
Nazareth, Pa. 18064
PH: 215-759-1331

POGO INC.
1841 Jerry's Road
Street, Md. 21154
PH: 301-692-5350

W.R. MOODY, CONTRACTOR
113 Walnut Lane
West Newton, PA 15089

FOUR COUNTIES CONTRACTOR
R.D., Box 249
Coalport, Pa. 16627
PH: 814-672-5751

O. A. NEWTON & SON CO.
Bridgeville, Delaware 19933
PH: 302-337-8211

HASCHEN AGRICULTURAL SYSTEMS
P.O. Box 505
Chestertown, Md. 21620
PH: 301-778-5800

TRI-STATE MARINE DIST. INC.
Route 256
Doris, Md. 20751
PH: 301-867-1447

BUY OR LEASE
Special Prices End April 15th