

# Farm Calendar

## Now is the Time

(Continued from Page A10)

between two pieces of burlap - roll it and keep it moist and warm. Then count the seeds that germinate against the total and determine the percent germination.

### To Evaluate Winter Wheat Top-Dressing

During this season of the year, many farmers ask the question, does winter wheat need fertilizing? According to Extension agronomists, topdressing with fertilizer may or may not be a good idea. There are several things that should be considered before making the decision.

In the first place, do not topdress winter wheat with a fertilizer that contains nitrogen if the wheat is to be overseeded with clover or alfalfa. Nitrogen causes heavy growth of wheat which may smother out the new seeding. Now the winter wheat fields that have come through the winter thin, should be topdressed. Use only a straight nitrogen fertilizer, such as urea. Topdressing winter wheat with phosphate or potash fertilizers have not given any increased wheat yields.

Apply the nitrogen fertilizer in early spring at the rate of 30-40 pounds of actual nitrogen per acre.

### To Provide Farm Security

Thefts and vandalism on farms is on the increase. This is very difficult to prevent because of the various items around the farm building and home; also, the number of buildings and places to enter are many. However, we suggest that every farmer take

(Continued from Page A10)

meeting, 8 p.m., Extension Center, Flemington, N.J.  
Lancaster County FFA dairy products contest, 9 a.m., Penn Dairies.

### Thursday, April 8

Backyard fruit growing, 9:30-11:30 a.m., Lancaster Farm & Home Center.

### Friday, April 9

PEMA monthly meeting, Sheraton, Lancaster.

Maryland Holstein sale, 7 p.m., Timonium Fairgrounds.

### Saturday, April 10

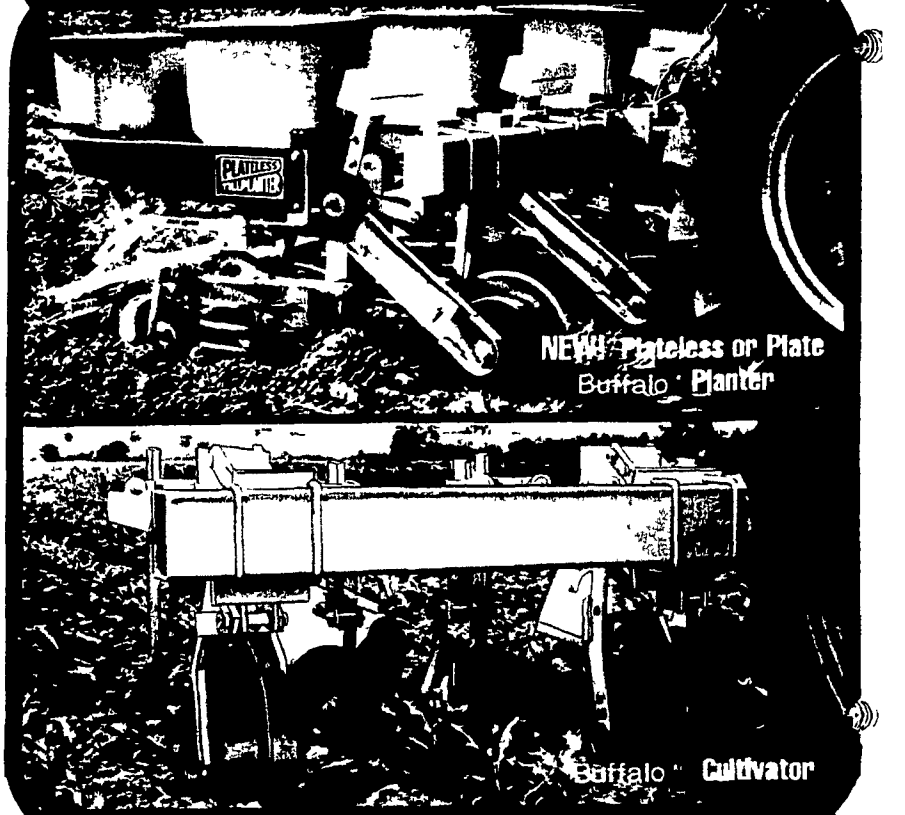
12th annual Maryland Holstein Show, 9:30 a.m., Timonium Fairgrounds.

Pa. Nut Growers Assn. grafting demonstration, 10 a.m.-2:30 p.m., Kutztown Grange.

some steps in protecting this machinery, tools, livestock and supplies. The automatic lights that come on at dusk and go off at dawn should be of real value in discouraging burglars. There are also many new sensing devices that detect movement around the premise.

Watch dogs are also very useful in detecting strangers around the property. Shops, garages and other smaller buildings should be kept locked when possible. The identification of animals by tags, branding, and photographs is very helpful. It is also a good idea to mark all machinery and tools with a permanent identification number. The best number to use is your drivers license number preceded by DL PA (Drivers License, Pennsylvania). Remember, social security numbers are non-retrievable, so it's best not to use it. Farm thefts are on the increase and farmers should take steps to protect their property.

## BUFFALO PLANTERS



### Buffalo REDUCED TILLAGE SYSTEM

We've been saving fuel, soil and moisture for 20 years! With the Buffalo, you reduce field operations to a minimum... cut production costs by \$20 per acre or more. Whatever your system may be — till plant, eco-fallow, double-crop, Buffalo is the planter for you!



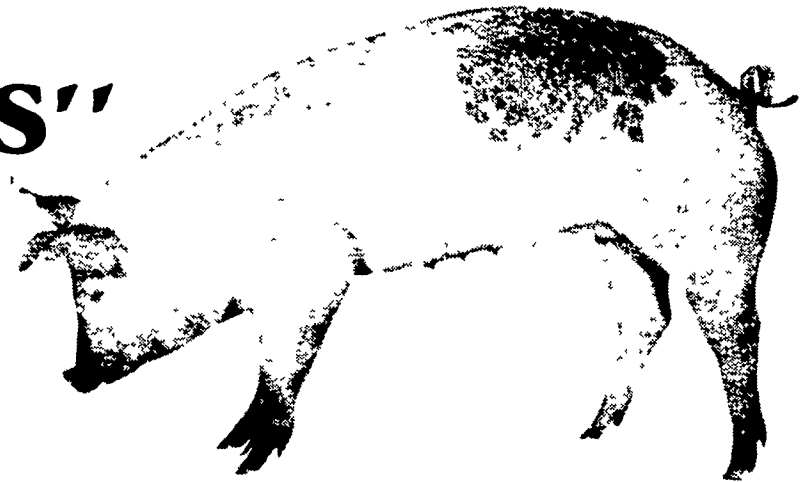
Please contact your local dealer or  
**HAMILTON EQUIPMENT, INC.**

567 South Reading Road  
Ephrata, PA 17522  
Phone: 717/733-7951



# Put New Life Into Your Sow Herd with "KLEEN LEEN GILTS"

If you want to improve your herd in the shortest possible time, trade in that old sow on a Kleen Leen Gilt. After all, gilts contribute half of the income potential of hogs you market. And every "checker gilt" we sell has proven her growing ability on the demanding "Kleen Leen Growth Selection Curve."



## Get One Kleen Leen Gilt FREE With Every 10 Purchased (Min. Order 20 Gilts)

Applies to all orders received prior to April 30, 1982  
For shipment prior to September 30, 1982

Contact one of the Purina Dealers listed below for more information

### HESS MILLS

PHONE 717 442 4183  
717 768 3301  
PARADISE PA 17562

### HIGH BROS.

PHONE 717 354-0301  
GORDONVILLE, PA 17529

### K & K FEED, INC.

PHONE 717-866 2324  
23 N PARK ST RICHLAND PA 17087

### UMBERGER'S MILL

PHONE 717-867 5161  
FONTANA PA 17042

### KEYSTONE MILLS

John B. Kurtz  
PHONE 717 354-4616 717 738 1088  
RD3, EPHRATA PA 17522

### MCCRACKEN'S FEED MILL, INC.

PHONE 717-665 2186  
2 NEW CHARLOTTEST MANHEIM PA 17545

### THE PURINA PROGRAM



FOR GOOD PRODUCTION

### CLARKS AG. CENTER

MAIN ST  
TURBOTVILLE PA 17772  
717-649 5158

### WEST WILLOW FARMERS ASSN., INC.

PHONE 717-464-3386  
WEST WILLOW PA 17583

### SOUTHERN DIVISION

West Willow Farmers Assoc., Inc  
PHONE 717 529-2113  
RTE 472 AT UNION, PA  
RD 1, OXFORD, PA 19363

### M. G. HENNINGER & SON INC.

PHONE 717-362 3333  
BERRYSBURG, PA 17005

### J. P. ANIMAL SUPPLY

2497 Tome Hwy.  
Rising Sun, MD  
301-658-5795

### Anthony's Feed Mill

PHONE 215-488-6211  
STRAUSTOWN PA 19559