

Poultry Markets

N. E. Weekly Shell Egg Report

Tuesday, Mar. 23

Report supplied by USDA

Prices paid per dozen Grade "A" Brown eggs in cartons delivered to retail stores:

	Ex. Large	Large	Medium	Small
MASS.X	86-96	86-93	77-84	59-69
Mostly	88-94	88-91	79-82	61-67
N. HAMP.	81-87	81-87	72-78	54-60
Mostly	83-86	83-86	74-77	56-59
R.I.	89-90	89-90	80-81	62-63
VERMONT	88-96	88-92	79-86	-
Mostly	90-91	89-90	81-83	-
MAINE	88-91	88-89	79-81	61-67

X Includes Central and Western Sections only.

Weekly New York Egg Market

From Friday, Mar. 19 to Mar. 26

	Fri.	Mon.	Tues.	Wed.	Thurs.
WHITE					
Jumbo	83	83	79	78	78
Ex Large	82	82	78	77	77
Large	82	82	78	76	76
Mediums	77	77	73	71	70
Pullets	63	63	59	57	57
BROWN					
Jumbo	95	95	93	91	91
Ex Large	89	89	87	85	85
Large	87	87	85	83	84
Mediums	79	79	77	75	75
Pullets	Unquoted				
Peewees	Unquoted				
Off Grade					
Large	73	73	68	65	65
Checks	44	44	42	40	40

Copyright 1982 by Uner-Barry

Heinsey's Poultry Market

Root's, East Petersburg
Tuesday, March 23

Report supplied by auction

MUSCOVY DUCKS, DRAKES:

range .82-.94 per lb.

MUSCOVY DUCKS, HENS:

range .72-.86 per lb.

PULLETS: 6-8 lbs. range .60-.64

per lb.

RED FOWL: 4-5 lbs. range .30

.36 per lb.

RED FOWL: 5-6 lbs. range .36

.46 per lb.

CROSSBRED FOWL: 5-9 lbs

range .30-.42 per lb.

CROSSBRED ROOSTERS: 4-6

lbs. range .50-.72 per lb.

CROSSBRED ROOSTERS: 7-12

lbs. range .40-.66 per lb.

GUINEA FOWL: range 1.10-1.46

per lb.

BANTY ROOSTERS: range 1.25-

3.00 ea.

BANTY HENS: range 1.00-1.50

ea.

GEESE: 8-16 lbs. range .42-.74

per lb.

ONE TURKEY: 36 lbs. range .36

per lb.

PIGEONS: range 1.00-1.50 ea.

WHITE PIGEONS: range 2.00-

2.75 ea.

RABBITS: 4-6 lbs. range .70-1.00

per lb.

RABBITS: 7-10 lbs. range .50-.66

per lb.

GUINEA PIGS: range .25-1.00

ea.

GOATS: range 27.00-52.50 ea.

KID GOATS: 22.50-45.00 ea.

BUNNIES: range 1.25-4.25 ea.

TOTAL AMOUNT COUPS: 1,178

Nest Run Eggs

Prices are from Egg Clearinghouse, Inc., (ECI) Durham, N.H. and reflect trading prices for gradable nest run eggs (GNR) on ECI, a nationwide trading center for producers, packers and marketers. GNR eggs are classified by weight in 30-dozen cases, and traded in lots of either 300 or 750 cases. Prices are FOB buyers dock, and are computed Tuesday and Thursday of each week. This week's prices for each classification were:

Classification	Net Weight Per Case	Mar. 23 Tuesday	Mar. 25 Thursday
Class 1 - Large	48 lbs.	57	58
Class 2 - Large	45 lbs.	56	54
Class 3 - Medium	42 lbs.	55	54
Class 4 - Small	39 lbs.	49	48
Breaking Stock	48 lbs.	51	49
Checks	48 lbs.	46	44

Delmarva Poultry

Thursday, March 25

Report supplied by USDA

MARKET COMMENT: RTC movement irregular; where features are offered, demand is good. Otherwise, interest only fair. Live supplies adequate. Weights light to desirable.

Today's L.T.L. asking prices unchanged on U.S. Grade A at 46-51 cents.

Estimated slaughter of broiler fryers in Delmarva (000).

Estimated 3/25 1,695; Actual 3/18 1,671; Actual 3/23 1,753; Average Weights 3/23 4.06; 3/16 4.13.

New York Multiple Drop Broiler Report

Thursday, March 25

Report supplied by USDA

Current broiler/fryer negotiated prices for immediate delivery includes mostly multiple-drop shipments to New York City from Delmarva.

RANGE: U.S. Grade A 45-48;

Premium (X) U.S. Grade A 49-51.

WTD. AVG.: U.S. Grade A 47.13;

Premium (X) 50.98.

(X) Includes special services, selected competitive brands, etc.

Philadelphia Eggs

Thursday, March 25

Report supplied by USDA

MARKET COMMENT: Prices generally lower; carton orders only fair. Distributor supplies ample. Undertone barely steady.

Prices to Retailers: Sales to volume buyers, consumer grades white eggs in cartons delivered store door:

A Extra Large 76-84; A Large 75-83; A Medium 69-77.

Baltimore Eggs

Thursday, March 25

Report supplied by USDA

MARKET COMMENT: Prices trending lower. Supplies heavy and demand fair.

Cartoned Eggs: Prices to retailers, state graded (min one case sale) white.

Grade A Large 76-87

Grade A Medium 71-82

Eastern Pa. & N.J. Poultry

Thursday, March 25

Report supplied by USDA

MARKET COMMENT: Prices generally lower. Offerings ample. Slow to clear.

Prices Paid at Farm:

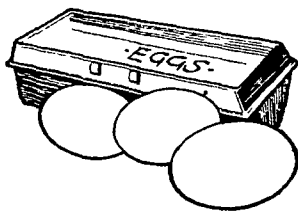
Light Type Hens: 9-10.

F.O.B. Plant: 10-12.

Heavy Type Hens At Farm: 15-

16 1/2.

F.O.B. Plant: 17-19.



ATTENTION FARMERS

Beginning MARCH 29, 1982
HATFIELD PACKING CO. and
BAUMS MEAT PACKING

Will Be Opening A
BUYING STATION

For Your Hogs and Cattle at the
DANVILLE LIVESTOCK MARKET

RD4, Danville, PA

- We will receive your hogs from 8 AM to 12 Noon every Monday. Your hogs will be weighed and paid for immediately.
 - We will also accept your sows & boars
 - Your cattle will be received from 12 Noon to 4 PM. We will either pay for your cattle immediately or you may sell them dressed weight.
 - There will not be a commission or yardage fee deducted from your check.
 - You may call our office Monday morning and we will be able to tell you the base price for hogs for the day.
 - Please come and give us a chance to continue doing business with you through this method
- FOR INFORMATION CALL
717-275-2880

Lancaster Farming

Copyright 1982 by Lancaster Farming
P.O. Box 366 - Lititz, PA 17543
Office: 22 E. Main St., Lititz, PA 17543
Record-Express Office Building
Phone: Lancaster 717-394-3047
or Lititz 717-626-1164

Robert G. Campbell, Publisher
Sheila M. Miller, Editor
Dick Anglestein, Staff Writer
Debra L. Koontz, Home Editor
Donna M. Tommelleo, Staff Writer

CORRESPONDENTS

Ginger Secrist Myers, Adams County
Littletown 717-359-7542

Patty Gross, Bedford, Blair, Huntingdon counties
Roaring Spring 814-224-4694

Laurel Schaeffer, Berks County
Bernville

Jane Breesee, Bradford County
Ulster 717-358-3346

Beth Hemminger, Cumberland County, Franklin
and Perry counties
Newville 717-486-5322

Sally B. Bair, Lancaster County
Columbia 717-285-4926

Susan Kauffman, Lancaster County
Peach Bottom 717-548-3131

Joyce Bupp, York County
Seven Valleys

Subscription Price.
\$7.50 per year, \$13.00 - 2 years
\$12.00 per year outside of
PA, NJ, MD, DE, NY, VA & WV

Established November 4, 1955
Published every Saturday
by Lancaster Farming, Lititz, PA
Second Class Postage paid at
Lititz, PA 17543 USPS 304-040

For address change form or new
subscription see Mailbox Markets
Members of Newspaper Farm Editors Assn.,
Pa. Newspaper Publishers Association,
and National Newspaper Association.



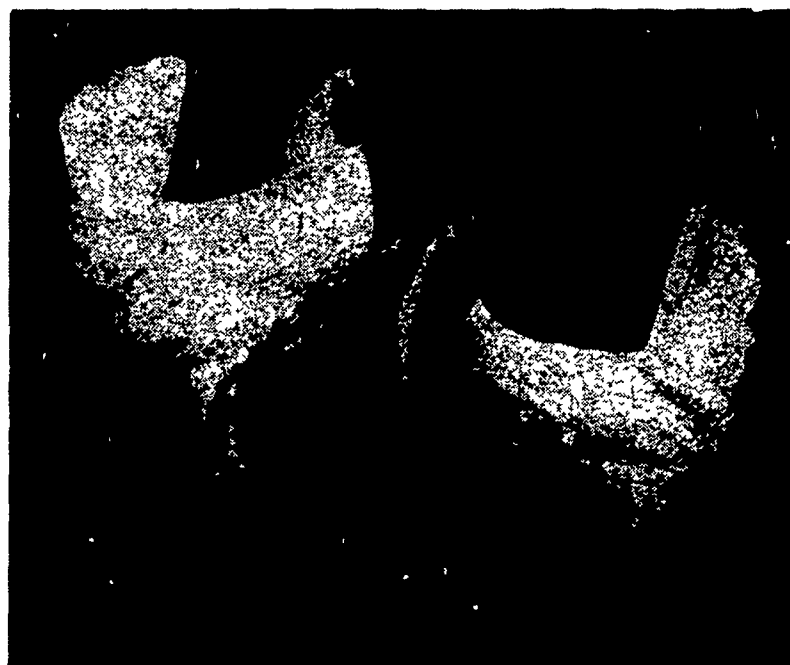
Two Ways To Improve Your Profit Picture XL & DK

Two layers with distinctly different characteristics... From two separate research programs

You don't have to buy from two different companies to get the two top layers on the market

The XL shows excellent production under many management conditions. The DK responds best to finely tuned, close management.

DEKALB Layers are bred to possess the economic traits most applicable to your operation. You do have a choice. The high productivity XL or the high efficiency DK



Mayer's CHICKS, INC.

DEKALB
BROWN & WHITE
EGG LAYERS

Quakertown, PA 18951
(215) 536-3155

HUBBARD
WHITE MT.
BROILERS