

# Livestock market and auction news

## St. Louis Cattle

Thursday, March 18  
Report supplied by USDA

Receipts this week: 5,200;  
Week Ago: 6,000;  
Year Ago: 5,600  
Compared last week, both slaughter steers and heifers steady early in the week, but early declines in wholesale beef carcass prices apparently resulted in a weak undertone in the mid-week trade when numbers both classes were insufficient for a full test of prices. Cows steady to 1.00 lower. Bulls steady. Slaughter supply near 35% heifers and 15% cows.

**SLAUGHTER STEERS:** Mixed Choice and Prime 2-4 1050-1200 lbs. 66.00-66.50, part load Monday 67.00. Choice 2-4 950-1250 lbs. 64.50-66.00, bulk 65.00-66.00. Mixed Good and Choice 2-3 900-1275 lbs. 63.00-65.00. Good 2-3 900-1175 lbs. 61.00-63.00. Mostly Good 2-3 1075-1325 lbs. holsteins 53.50-59.00, few Standard to Good 1050-1250 lbs. 52.00-54.00.

**SLAUGHTER HEIFERS:** Mixed Choice and Prime 2-4 900-1050 lbs. 64.00-64.50. Choice 2-4 875-1050 lbs. 62.50-64.00; 800-900 lbs. 59.00-61.00. Mixed Good and Choice 2-3 800-1000 lbs. 58.00-60.00. Good 2-3 750-925 lbs. 56.00-58.00

**COWS.** Late Sales Utility and Commercial 2-4 37.00-39.00. Boning utility 1-2 40.00-42.25. Cutter 1-2 35.00-38.00. Canner and Low Cutter 1-2 30.00-35.00

**BULLS.** Yield Grade 1-2 1050-1900 lbs. 46.00-51.00. Few Yield Grade 1 52.00, individual 1160 lbs 55.00.

**FEEDERS.** (Including around 2,000 at the regular Thursday auction.) Feeder steers steady to 1.00 lower, decline mainly on weights under 600 lbs. Feeder heifers 1.00-3.00 lower. Supply mainly Medium Frame 1 and Mixed 1-2 300-700 lbs. steers and 300-600 lbs. heifers. Buyer attendance fairly large.

**FEEDER STEERS:** Medium Frame 1: 300-500 lbs. 63.00-69.25; bulk 64.25-68.25; couple lots thin 325-345 lbs. 71.75-72.00; 500-600 lbs. 61.00-67.00, mostly 62.25-63.75; scattered lots 600-725 lbs. 62.00-63.75; few lots fleshy 800-950 lbs. 60.00-64.00. Medium Frame 1-2 and some Small Frame 1: 325-500 lbs. 57.00-62.25, mostly 59.00-61.75. Large Frame 2 Holsteins: Couple lots 550-975 lbs. 48.50-50.75.

**BULLS:** Medium Frame 1 350-550 lbs. 58.00-61.25.

**FEEDER HEIFERS:** Medium Frame 1: couple lots 270-285 lbs. 56.75-58.00; 300-500 lbs. 51.25-57.25, mostly 54.00-56.50; 500-650 lbs. 51.00-56.50; few lots fleshy 750-865 lbs. 54.00-56.25.

## Middleburg Auction

Middleburg, Pa.  
Tuesday, March 16

Report supplied by PDA

**CATTLE 326.** Compared with last Tuesday's market, slaughter steers 50 cents-\$3 lower, mostly \$1-\$2 lower. Slaughter cows steady to 75 cents lower. Choice 2-4, 1100-1500 lbs. slaughter steers 65-68.50, couple 70, Good 58.50-63.75, Standard 53-58.50, few Utility 41.50-50. Few Choice slaughter heifers 57.60-60.10, few Good 56.50-58.85. Utility & Commercial slaughter cows 38.75-43.60, few 45.35, Cutters 37.50-41, few Canner & Low Cutters 36.25-37.50, Shells down to 33.25. Few Choice slaughter bullocks 59.50-65.50, one 68.75, few Good 57-63.35. Yield Grade #1, 1200-2200 lbs. slaughter bulls 51.35-56.75. Few Medium & Large Frame #1, 400-600 lbs. feeder steers 52.00-57. Few Medium Frame #1, 450-700 lbs. feeder heifers 43.00-50.

**CALVES 193.** Individual Prime vealer at 105.00, Choice 84.00-94, Good 75.00-85, Standard & Good 70-100 lbs. 52.00-61. Farm Calves: Hol. Bulls 90-125 lbs. 58.00-78; Hol. Heifers 90-140 lbs. 80.00-115.

**HOGS 583.** (3-15-82) Barrows and gilts steady to 75 cents higher. US No. 1-2 210-235 lbs. barrows and gilts 51.35-52.10, No. 1-3 190-250 lbs. 50.50-51.35, No. 2-3 2-270 lbs. 48-50.50. US No. 1-3 360-600 lbs. sows 42.25-48, couple 51, No. 2-3 300-400 lbs. 36.00-42. (3-16-82) HOGS 64. One Lot US No. 1-2 215 lbs. at 51.10, lot No. 1-3 205 lbs. at 50.50. Boars 33.00-37.00.

**FEEDER PIGS 100.** US No. 1-3 25-45 lbs. feeder pigs 30.00-46 per head, No. 1-3 50-80 lbs. 45.00-50 per head.

**SHEEP 11.** Few Choice 90-110 lbs. wooled slaughter lambs 65.00-81.00.

**GOATS 18.** 19.00-47 per head.

## Morrison Cove Auction

Martinsburg, Pa.  
Monday, March 15

Report supplied by auction

**CATTLE 210.** High Choice & Prime slaughter steers 67.25-70.25, Choice 65-67.25, Good 63.50-65, Standard 55.50-60.25, Utility 48.50-54.50. Choice slaughter heifers 62.25-65.25, Good 60.25-62.25, Standard 57.50-58.50, Utility 50.25-56.50. Utility & Commercial slaughter cows 45.25-50.25, Cutters 42.50-45.10, Canner & Low Cutters 37.50-40.25, Shells down to 32.50. Good slaughter bullocks 56-58.25, Standard 50.50-54.25, Utility 45.25-50.25. Yield Grade #1, slaughter

bulls 53.25-58.25, #2, 50.25-53.25. Choice feeder steers 58.50-60.50, Good 54.50-58.25, Medium 47.50-50.25. Good feeder heifers 55.50-60.25, Medium 47.50-53.50. Good feeder bulls 54.50-58.50, Medium 48.50-52.50.

**CALVES 338.** Prime vealers 94.50-106, Choice 91.50-94.50, Good 82.50-91.50, Standard & Good 110-130 lbs. 71.50-78.50, 90-110 lbs. 54.50-60.50, 70-90 lbs. 50-54.50. Farm Calves: Hol. Bulls 90-130 lbs. 80.00-91.50; holstein heifers 90-130 lbs. 78.50-130.00.

**HOGS 434.** US No. 1-2 2-240 lbs. barrows and gilts 51.75-53.25, No. 1-3 2-250 lbs. 49.50-51.75, No. 2-3 2-260 lbs. 48.50-49.50, No. 2-4 2-260 lbs. 47.25-49, US No. 1-3 sows 47.50-50.25, No. 2-3 44.25-48.25. Boars 33.50-38.25.

**FEEDER PIGS 22.** US No. 1-3 25-40 lbs. feeder pigs 23-26.50 per head, No. 1-3 40-60 lbs. 26.50-34.50 per head.

**SHEEP 0.** no sales on offer. Goats 24: \$10-24.00 per head.

## Omaha Cattle

Thursday, March 18  
Report supplied by USDA

Slaughter steers at midweek closed steady to firm, instances 25-50 higher. Heifers steady to firm. Cows steady except canner and low cutter closing 1.00-2.00 lower. Bulls steady.

Four day receipts this week. 7,800; last week: 10,000; year ago: 12,000.

Declining beef market trends prompted a cautious attitude from the buyers. But smaller receipts and a continued small supply of cattle offered for sale from local trade areas created a type of forced trade demand. Uniform Choice steer offerings over 1150 lbs. and heifers over 1000 lbs. continue small. Slaughter steers 31 pct of estimated 5 day total; heifers 25 pct; cows 12 pct and feeders 31 pct.

**STEERS:** Few loads Choice 3, few Prime 3, few 4 1200-1250 lbs. 68.00-68.50, two loads Monday 68.75 and 69.00; Choice 2-4 1000-1200 lbs. 66.50-68.00, few muddy 1200 lbs. Tuesday 64.00; Mixed Good and Choice 2-3 1000-1150 lbs. closing 65.00-66.00, few Monday and Tuesday to 66.50, 1150-1200 lbs. Monday 66.50-67.00; Good 2-3 63.00-65.00, early 63.00-66.00. Choice 2-3 1300-1350 lbs. holsteins 60.00-62.00; Good with an end Choice and Good and Choice 57.50-59.50; Standard and Good 1150-1200 lbs. 57.00-58.00.

**HEIFERS:** Several loads and part loads Choice 3 and few Prime 3 975-1075 lbs. 66.00-66.50, couple loads reputation high dressing 1100 lbs. on Tuesday 66.75; Choice 2-4 950-1025 lbs. 64.00-66.00, Choice 2-3 900-950 lbs. 63.50-65.00, some carrying mud 63.00-63.50; Mixed Good and Choice 2-3 850-1000 lbs. 61.00-64.00; Good 56.00-62.00.

Average of Detailed Quotations. Choice 900-1100 lbs. steers 66.35; 1100-1300 lbs. 67.75. Average cost

steers 65.97, average weight 1145 lbs. compared 66.28 and 1140 lbs. a week ago. Average cost heifers 64.09, average weight 990 lbs. compared 63.24 and 1004 lbs. a week ago.

**COWS:** High Cutter, Utility and Commercial 1-3 38.50-41.00, high dressing 41.00-42.00; Cutter 35.00-39.00; Canner and Low Cutter early 31.00-36.00, closing 30.00-35.00.

**BULLS:** 1-2 1300-1900 lbs. 44.00-50.00, few high dressing individuals 52.00-57.00.

## Valley Livestock

Valley Stockyards  
Athens, Pa.

Monday, March 15

Report supplied by auction

Reported receipts of 294 calves, 106 cows, 17 bulls, 18 heifers, 6 steers, 137 hogs, 29 lambs, 2 sheep. Cattle market much higher; Calf Market strong.

Holstein Hfr. Calves to 125.00; Veal Calves to 93.00; Bobs, 90 to 110 up to 86.00; Bobs, 80 and down 45.00-55.00; Grassers & Feeders 34.00-60.00; Lambs No top ones 50.00-56.50; Sheep 18.00-28.00; Hogs, 200-250 lbs. 46.00-52.00; Sows 38.00-46.00; Boars 33.00-38.00; Pigs 12.00-30.00; Heifers 42.00-51.50; Steers common 41.00-47.25; Steers, feeder 45.00-53.00; Bulls 46.00-54.50; Cows, utility 41.00-44.00 top 47.00; Cows, fat 38.00-42.00; Cows, medium 34.00-36.50; Cows, poor or small 32.00-34.00; Horses to 520.00; Ponies to 140.00; Goats to 37.00.

## ATTENTION HAY FARMERS

Giorgi Mushroom Co. is buying mulch hay & crushed cobs for mushroom compost.

Call us for current prices.

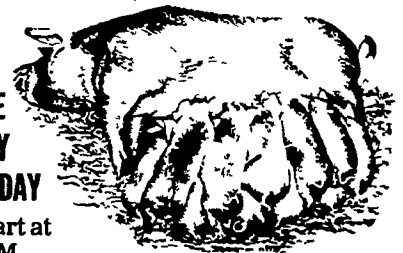
Giorgi Mushroom Co.

Box 96  
Temple, PA 19560  
215-926-2139 Ext. 236

## NEW HOLLAND SALES STABLES, Inc.

12 Miles East of Lancaster  
on Route 23, New Holland, Penna.

WEEKLY  
FEEDER  
PIG SALE  
EVERY  
WEDNESDAY



Sale to Start at  
1:30 P.M.

We Will Receive Your Pigs Anytime  
From 7 A.M. Wed. Morning

State Graded Until 12 Noon.

All pigs inspected by State Approved  
Veterinarian.

State tags available at our office for you to tag  
pigs at home to save 25 cents tagging charge.

Tags delivered if you call 717-354-4341  
our office in advance.

Calf Sale To Be Held  
Every Thursday At 3:30 P.M.

NORMAN KOLB  
717-397-5538

ABE DIFFENBACH  
717-393-4464

## BUTCHER SHOP And Country Store

Rt. 645 (2 Miles N. of Rt. 422)  
Myerstown, Pa. 717-933-4104

### CUSTOM SLAUGHTERING

- Beef, Pork, Veal, Lamb...Killed, Cut, Wrapped And Frozen To Your Liking.
- Hams and Bacon Cured And Smoked... Dried Beef...Fresh & Smoked Sausage.

(We Will Buy Your Injured Pigs)

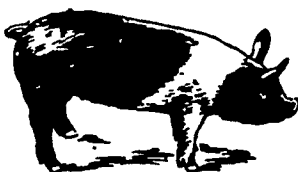


### BOLOGNA- MADE FROM YOUR MEAT!

- Lebanon or Sweet Bologna...Pork Roll... Hot Dogs...Ring Bologna.

Our Plant is USDA Federally Inspected, So You  
Can Resell Your bologna At A Retail Price!

CALL FOR PRICE LIST TODAY!



EMERY'S  
BUYING  
STATION

OPEN TO RECEIVE  
YOUR MARKET HOGS

AT THE GREEN DRAGON MARKET  
RD 4, EPHRATA, PA 17522  
1 MILE NORTH OF EPHRATA  
ON NORTH STATE STREET.

HOURS  
MONDAY, TUESDAY, and  
WEDNESDAY  
6:00 A.M. to 11:30 A.M.

YOU ARE PAID FOR YOUR  
HOGS IMMEDIATELY

Ken & Lois Emery, Proprietors

## Green Dragon Livestock Sales

1 Mile North of Ephrata, PA



COWS COWS COWS  
BUYERS FROM 3 STATES

Regular consignments from  
Bob Kennedy & Ed Stover plus 15  
other local consignors.

Lots of good Northern  
Feeders and Stockers.

### SALE EVERY FRIDAY

Bulls, Steers, Slaughter Cows,  
Lambs and Veal Calves  
11:00 A.M.- Beef Sale Stockers & Feeders  
200 to 250 each week.

12:30 P.M.- Dairy Cows  
7:00 P.M.- Small Animal Sale

For Special Sales and Herd Dispersals  
on the farm or at our barn or other  
market information call: Office 717-733-  
2444.

WALTER H. RISSER, Proprietor