

PUBLIC SALE

Of Antiques, Lg. & Sm. Appliances,
Office Equip., Tools, Lumber,
Shop, Lawn & Garden Equip.,
Automobiles & Motorcycle

THURSDAY, MARCH 25

at 10:00

Located 3 mi. west of Millersville, 2 mi. east of Washington Boro, 4 mi. south of Marticville along Rt. 999 at Central Manor, Manor Twp., Lancaster Co., Pa.

APPLIANCES: Tappan 2 door refrig.-freezer, frost free, G.E. elec. stove, Fedders Dehumidifier, Rudd 52 gal. elec. hot water heater, Del-Electric water cooler, Sharp solid state microwave oven, Sears air cond. 11,000 BTU, Zenith 21" color TV, Kenmore 3 speed scrubber polisher, elec. razors, Empire-Matic 32 cup coffee maker, small lights, Kodak 35 Retina auto. III camera w/flash & case, Kodak EK6 instant camera, Tram XL 23 channel C.B. & other sm. appliances.

ANTIQUES: Monark wood & coal stove w/water jacket & bun warmer (size 43"x25"), Miller's desk w/pigeon holes, kitchen cabinet w/flour mill, magh. drum & end table, oak secretary desk & chairs, cast iron kettles (1 w/3 foot), wooden clothes dryer, light globes & window frames w/glass.

HOUSEHOLD GOODS: Knotty pine corner bookcase & cabinet w/drawers, vinyl recliner & chair, galv. pump trough, stainless bar sink w/dbl. bowls & other wash bowls, 6 ft. picnic table, metal cabinets, vanity w/mirror, porch rockers, golf clubs & bag, Tennis net, Pyrex & other dishes, lanterns, silverware, wooden shelves & bench & other articles not listed.

OFFICE EQUIP.: Hermes printing adding mach. w/memory, filing cabinet, typing desk, swivel desk chair, Royal typewriter, typing stand, Keep/Safe safe etc.

SHOP TOOLS: B&D radial arm saw 8" w/cabinet & lock, Dewalt radial 16" arm saw, MillersFalls 6 1/2" skill saw, air wrenches w/sockets, pipe & bench vises, Ridged pipe dyes & cutter, Fairbanks platform scales, 250,000 BTU Standard LP gas heater, etc.

GARDEN EQUIP. & TOOLS: Roxy 5' gang mowers w/carrier, Gormon Rupp 1 1/2" trash pump w/gas engine & hoses, Homelite XL 102 20" chain saw, Oliver sprayer w/gas engine, tobacco lath, ext. ladders, snow blower for Wheel Horse, shovels, rakes, forks, picks, sledges, sprayers, elec. & hand trimmers.

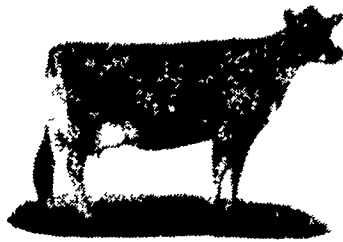
MISC. ITEMS: Walnut finished Excel kitchen cabinets (new), Excel cherry finished cabinets (new), elec. poles, fencing, metal fence posts, 275 gal. fuel tanks, 300 gal. skid tanks, steel I beams, roofing & concrete items, lots of hardware.

LUMBER: Good seasoned walnut & pine, old barn beams & siding, flake board, tongue & groove hardwood flooring.

AUTOS & CYCLE: 1976 Pontiac Bonneville auto - low mil. - elec. & tinted windows, air, AM-FM radio; 1947 Chevrolet pickup truck body & chassis w/motor; 1963 Harley Davidson 250 Spring M.C.; 4 mag wheels 14" 5 hole; 4 chrome wheels 14"x6".

Sale by,
KENNETH L. SMITH

Howard Shaub, Auctioneer
717-464-3541
and Roy C. Probst



PENNSYLVANIA JERSEY CATTLE CLUB ANNUAL CALF SALE

SATURDAY, MARCH 27

at 10:30 A.M.

At the Roy Shertzer Farm, Lancaster, Pa.

The Shertzer Farm is located near the Pennsylvania Jersey Cattle Club Annual Meeting Headquarters-The Willow Valley Farms Inn, 3 mi. South of Lancaster, Rt. 222. Watch for Sale Signs.

The following farms have consigned some exceptional young calves:

HERR ACRES: A December calf by Chocolate Sundae out of a Sleeping Milestone with 2-04 305 12,920 4.6% 590.

RHEIN'S MEADOW VIEW FARM: An October calf by a son of Favorite Banner. Grandam is a Pa. Farm Show Grand Champion (1981).

HOUGH'S MILKHONEY: A Secret H.L. Adam out of a Finalist of Marlu. Dam testing 5.5%.

BRIAN & MARTHA HOUGH: An October calf sired by Briarcliffs Oracle.

ULRICH'S VALLEY-O FARM: A September calf out of a Mercury and an October calf sired by Master Milestone C out of a Baronet with: 6-02 305 12,945 5.3% 701.

PHILLIPS' IRISH CREEK JERSEYS: A September calf sired by a son of Secret Baronet out of an Excellent - 90% Tenn Lotus BCB Lad.

AARON'S LYNMOORE FARM: An Intermediate calf sired by Quicksilver's Magic of Ogston and a Senior calf by Shadewell Fascinator.

DREISBACH'S LONGMEADOWS FARM: A Baronet Senior calf, Dam with: 5-05 305 12,480 504.

WILLIAMS' BRYNGOED FARM: A December born daughter of Quicksilver Noble and a 12,000 lb. dam.

IVAN ZIMMERMAN: A September calf sired by Rocky Hill Samsonite out of a daughter of B.S. Noble Superb.

SEED'S TOP-O-HILL FARM: A daughter of Advancer Sleeping Milestone Dam testing 6.4% fat. Show winning pedigree.

LEIBY'S WIN-DALE FARMS: A Reglus Demi Milestone daughter. Dam projected to: 3-00 305 12,098 585.

KOCHER'S SPRINGHOUSE FARM: An October calf sired by Shadewell Fascinator. Dam tests 5.3%.

Be sure to bid on one or several of these stylish heifers. Improve your milk production and increase your test by raising one or more of these fine replacements.

SEE YOU AT THE SALE

Catalogs will be sent by request only. They are available from: Robin Phillips, R.D. #1, Box 94, Mohrsville, Pa. 19541 or phone 215-926-1261

PUBLIC SALE

OF GLENAIRE FARMS
Two Valuable Farms
& Farm Equipment

Tuesday, March 30, 1982

10 o'clock

Farms are located 3 miles east of Elizabethtown. (E. High St.) along the Elizabethtown/Manheim Rd. and Oberholtzer Rd., Mt. Joy Twp., Lancaster Co., Pa.



128 Acre Farm

Farm #1 formerly known as the Coble Farm consists of 128 acres. 113 acres tillable, 15 acres pasture with stream.

Thereon erected a 2 1/2 story brick dwelling. First floor consists of 5 rooms, livingroom, dining room & kitchen. 2nd floor has 5 bedrooms & bath. Concrete basement. Oil fired hot water heat.

Large frame bank barn attached to barn is a loafing feeding area for cattle with automatic feeder. Feed lot is capable of accommodating 120 cattle, 20'x80' concrete silo. Large frame corn barn and other out buildings. 8,000 bu. grain bin, augers & fan.

Also located along the macadam driveway to property is a frame barn suitable for cattle, implement shed or tobacco shed.

12'x80' Mobile Home with 12'x24' attachment. 3 bedrooms.



92 Acre Farm

Farm #2 formerly known as the Wolgemuth Farm consists of 92 acres, 80 acres tillable balance in pasture which could be farmed.

Thereon erected a 2 1/2 story brick dwelling with full basement, asbestos roof, aluminum storm sash. Oil fired hot water heat with 2 zones. Domestic hot water.

First floor consists of 4 rooms. Living room dining room, kitchen & playroom. 2nd floor consists of 4 bedrooms & bath.

Large frame bank barn. Attached at rear of barn, is an implement shed, tobacco shed, & corn barn. 2 car frame garage, hog house & other out buildings.

These farms are both zoned agriculture. The land on both farms is level and in high state of cultivation.

Terms - 10% down, balance in 30 days. Immediate possession available. Persons wishing to inspect properties may do so by calling 367-1552 for an appointment.

Sale will be held at Farm #1, located along Oberholtzer Rd.

Real Estate will be offered at 10 o'clock.

Int. 826 Diesel wide front end 5200 hrs.

Ford N.A.A. 600 utility.

N.H. #718 harvester w/12 knives-2 narrow row head, pick up head, like new; N.H. #276 hayliner baler w/70 thrower, N.H. #469 haybaler, N.H. #256 rake w/R. tines, N.H. #354 grunder mixer, N.H. #8 silage wagon w/3 beaters/roof on 10T running gears; N.H. #27 blower; Lamco silage wagon on 8T running gear; Gehl silage wagon on 6T running gears; I.H. #700-5 bottom 16" auto. reset plow, I.H. #56 corn planter w/disc openers/rotary valve, I.H. #370-12' transport disc, I.H. #275 manure spreader w/hyd. end gate, I.H. #3 flail chopper, I.H. 7' offset disc, 12' Brillion cultipacker, J.D. 12' harrow, Ford 12' harrow, J.D. 13 disc drill, N.I. 3 pt. grass mower, N.I. 5' rotary mowers, 4' high side hay wagons w/N.H. and I.H. running gears, 2 flat bed wagons, Mayrath trailer sprayer, portable Grain Gehl 450 bu. grain dryer, Hesston stake mower, Harvest Handler elevator, 12' drag, concrete mixer, grain auger, 6T feed bin, Knepco heaters, hog feeders, roll #9 fence wire, Polaro snowmobile, many other articles.

65T. Ear Corn, 20 T. Mixed Hay, 5 T. Straw, 25 feet Alfalfa Haylage, 15 feet Corn Silage. Not Responsible For Accidents: Lunch by Farm Women #6.

Sale by,
GLENN & CLAIR BAUM

Auct. Raymond Miller

653-8762

Rufus Geib

Atty. Aispach & Reider

Lancaster Farming,
Saturday, March 20,
1982-E19

Public Sales Register

SAT. MAR. 20 - 12 Noon.
Public Sale of Contractors
Equipment and Tools
Located at the Lionville
Fire Co Hall, Lionville,
PA, Rt. 100 south past the
PA Turnpike 1 mi. to Rt.
113 turn right to fire hall
R.H. Thompson, Auc-
tioneer

SAT. MAR. 20 - 10 A.M.
Public Sale of Tractors,
Equipment, Antiques and
Households. Located at
RD 2, Schuylkill Haven,
near Friedensburg,
Wayne Twp., Schuylkill
Co., PA, south off Rt. 443
at Gardners Cafe, west off
Rt. 183 near Reedsville
Church. Mr. and Mrs. Carl
Herring, Owners. Jay
Regel Jr., Auctioneer.

SAT. MAR. 20 - 10 30 A.M.
Public Sale of Cattle,
Farm Machinery and
Dairy Equipment. Located
on McCurdy Brook Rd., 3
mi. west of Rt. 10, Hobart,
NY. Sandra Champlin,
Owner. Rex's Auction Ser-
vice and D. Luther, Auc-
tioneers

SAT. MAR. 20 - 9 A.M.
Public Sale of Real Estate,
Farm Machinery and
Related Items. Located 4
mi. northwest of Mid-
dleburg, PA, take 1st
blacktop right off 522
through Kissimmee for
another mile, then turn
right at Farm Pond to 1st
farm on left. Mr and Mrs
George H Long, Owners
Earl Eash, Auctioneer.

SAT. MAR. 20 - 9 30 A.M.
Public Sale of Machinery
Located at the farm of
Melvin Graybill, 2 mi.
south of Selinsgrove on
Rt. 35, turn left at blinker
light in village of Kantz, 1
mile to sale. Bryan D.
Imes, Auctioneer

MON. MAR. 22 - 2 P.M.
Danville Livestock
Market, cattle and hog
auction. Located Old
Route 11, Danville, PA.
Melvin M Lehman,
owner

MON. MARCH 22 - Annual
Consignment Auction of
Farm Equipment by M.M
Weaver & Sons, Inc. N.
Groffdale Road, Leola, Pa
John E. and Paul E. Mar-
tin, Auctioneers.

MON. MAR. 22 - 12 Noon.
Public Sale of Cattle.
Located in York Co., mid-
way between Spring
Grove and Jefferson on
Rt. 516 then south west
on Stambaugh Rd., 3 mi.
then west on Dubbs Rd. 3
mi. to farm. Robert H.
Hefena C. Dubbs,
Owners. Clair R.
Slaybaugh, Auctioneer

MON. MAR. 22 - 9:30 A.M.
Public Auction for the
Esther M. Schneck Estate
Located along Rt. 309 in
the village of Orefield,
across from Parkland
School turn onto Parkland
Terrace St. follow to field
in the rear of develop-
ment for parking, Lehigh
Co., PA Ralph Zet-
tlemyer Auction Co Inc.

TUES. MAR. 23 - 10 A.M.
Public Sale of Cattle and
Farm Machinery Located
in Carlisle, Cumberland
County, PA. Kruger Dairy
Farm, Owners Kling's
Auction Service.

TUES. MARCH 23 - 9:30
A.M. Annual consignment
auction at Geo. V Seiple &
Son Dealership, RD 2,
Easton, Pa. Ralph W. Zet-
tlemyer Auction Co.,
Auctioneers.

MAR. 23 - 9:30 A.M.
Public Sale of Tractors
and Machinery Located
at RD 2, Van Buren Rd.,
Easton, PA 18042.
George V. Seiple and Son.
Ralph W. Zettlemyer,
Auctioneer

TUES. EVE. MARCH 23 -
7:30 P.M. Nite Cow Sale,
to be held at Smoketown
Quality Dairy Sales Co.
located Rt. 340 5 miles
East of Lancaster, 5 miles
West of Intercourse, Pa.
Gordon and Helen Fritz,
Managers, Carl Diller Auc-
tioneer.

4TH INTERNATIONAL SPRING

RED & WHITE SALE

SATURDAY, MARCH 27

at 12:30 Guernsey Sales Pavilion, Lancaster, PA.

Selling 80 Red & Whites including cows bred & open heifers and heifer calves. Also, three well bred service age bulls. All registered in the Red & White Association, 50 also registered in the HFAA.

A Feature Cow



Val Brilliant Rina-Red (GP)
1Y 319d 15305 524

- 23 DAMS OVER 20,000 MILK
- 18 DAMS VG OR EX
- 15 DAMS OVER 800 FAT
- 13 SIRES OVER +1000 PDM

**DON'T MISS THIS SALE!
SOMETHING FOR EVERYONE!**

Catalogs and information: RWDCA, Box 63L,
Crystal Spring, PA, 15536, 814-735-4221

Fresh, milked 88 lbs. @
4.5% Sells with her Dec
'80 heifer by Stanhope
Cannonade.