



Franklin County DHIA Monthly Report

January 1982

NAME	BVD	NO COWS	LBS. MILK	LBS. FAT
R V & S V Hollenshead	B3	32	22,863	847
Frank S Heberlig	3	45	20,257	780
Oakleigh Farm	3	95	19,591	761
R V & S V Hollenshead #2	B3	51	18,888	725
Wayne A Hall	3	37	19,214	711
Carl O Stuff	B3	46	20,393	705
Robert E Harwood	3	85	18,890	698
Kenneth E Oliver	3	29	18,005	696
R C & J R Shoemaker	3	32	18,861	696
Elmer & Frank Ressler	3	37	18,304	695
Burk Lea Farms	3	123	19,430	687
Dennis W Bricker	B3	34	18,714	687
J C Young Jr & Son	3	59	18,681	686
Ray Wingert	3	58	17,677	683
H Lester Oyler Est	3	69	17,663	682
Richard Harshman & Son	3	70	18,293	681
Norlo Farm	3	136	18,875	681
Gaymere Farm	3	171	17,661	681
Lester D Fortna	3	43	18,329	680
Ray R Kane	B3	28	17,132	680
R C & C B Allison	B3	162	19,446	677
William C Ile	3	38	18,239	664
Lawrence Lehman	B3	53	17,367	661
Aldus Fry	B3	55	20,104	660

J. Eldon Crider	3	48	17,890	659
Culbertson Green Farm	B3	99	18,150	658
Philip & Conrad Hege	B3	60	17,250	656
Dale Wadel	B3	50	16,981	653
Harold Goshorn	B3	77	16,926	653
Lester & Alvin Meyers	3	54	17,232	645
Carl E Pugh & Son	B3	133	16,964	645
Robert Mellott	3	39	18,244	644
Mark W Meyers	3	78	16,942	644
Keeners Dairy	B3	108	16,305	643
Paul Cordell	B3	51	17,814	641
George Skelly	3	71	17,661	641
Fred E & Dale Rice	B3	149	17,101	640
Howard & Steve Mellott	B3	75	17,047	639
Roger Beck	B3	60	16,342	633
Stone Hart Farm	B3	131	18,409	632
Robert L Bailor	B3	56	16,898	632
Thomas M Horst	B3	70	17,410	626
Myr-Lea Farms	3	67	17,516	626
Walnut Lane Farm	2	76	13,538	625

Listed below are completed lactations of 850 lbs of butterfat or over

OWNER NAME OR NO.	AGE AT CALVING	DAYS IN MILK	LBS. MILK	LBS. FAT
Oakleigh Farm				
Kristen RH	6 7	305	24,259	4 4 1077
Culbertson Green Farm				
42 RH	9-5	305	25,811	4 0 1030
Norlo Farm				
Belle RH	8 4	305	28,253	3 6 1028
Frank S Heberlig				
103 RH	7-6	305	27,238	3 8 1024
R C & C B Allison				
141 GH	7-5	305	25,973	3 9 1023
Oakleigh Farm				
Inez RH	6 0	305	23,721	4 2 994
R C & C B Allison				
Y121 GH	2 7	305	24,686	3 9 971
Robert Grove				
172 RH	8-2	305	20,469	4 7 956
Ray Wingert				
12 RH	4-5	305	22,483	4 2 934

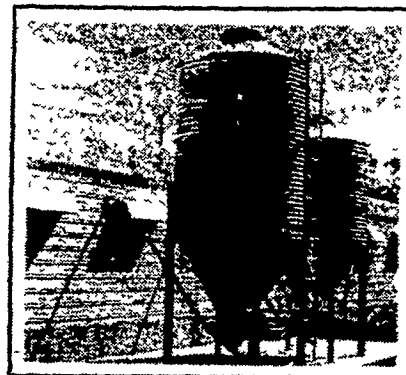
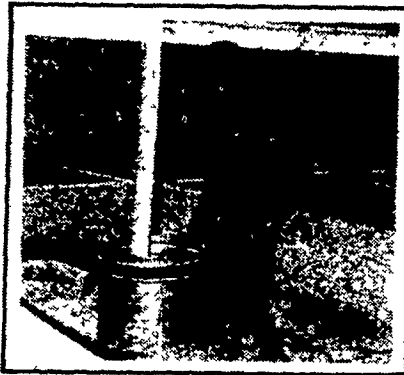
Mark W Meyers									
35 RH	4-10	305	21,554	4 3	918				
Robert E Harwood									
464 RH	5-1	305	23,917	3 8	908				
C Richard Locke									
19 RH	3-6	305	18,183	4 9	899				
Walnut Lane Farm									
Audrey RG	4-4	305	19,427	4 6	890				
H Lester Oyler Est									
Olive 6 RH	4-3	305	18,792	4 7	885				
Dale Wadel									
Sam GH	5-4	305	25,686	3 4	879				
Oakleigh Farm									
Able RH	5-10	305	22,365	3 9	876				
Carl E Pugh & Son									
Puggie GH	4-11	305	20,391	4 3	871				
Oakleigh Farm									
Nannie RH	6-3	305	22,930	3 8	869				
William E. Swales									
112 GH	5-2	305	21,488	4 0	866				
Hamilton Height Farm									
122 GH	5-6	305	23,047	3 7	864				
H Lester Oyler Est									
Vee 96 RH	7-4	305	20,056	4 3	863				
J Eldon Crider									
Paula RH	4 6	305	24,535	3 5	862				
Roy A Sollenberger									
11 GH	7-4	305	23,571	3 6	856				
Dale Wadel									
Becky GH	4-4	305	22,793	3 7	853				
Philip & Conrad Hege									
51 GH	4-2	305	23,051	3 7	850				



READ LANCASTER FARMING FOR COMPLETE AND UP-TO-DATE MARKET REPORTS

CHORE-TIME

Chore-Time® feed bins, flex-auger®, and other equipment work together to help you modernize quickly, efficiently, economically



hog feeding...

Your imagination is the limit when it comes to the hog feeding layout you can get with Chore-Time's patented FLEX-AUGER® Feed Delivery System — it goes up, down, around, thru, over, or under. And it does it all without gears, corner cogs, or other energy-eating mechanism. The secret is our sensible one-piece, continuous, spring-type "centerless" auger.

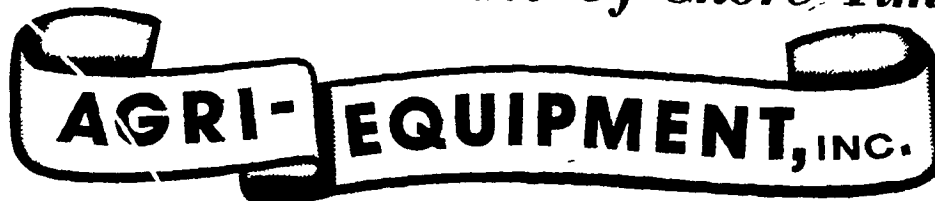
feed bins...

With more than 40 models to choose from, Chore-Time's line-up of feed bins lets you choose exactly what you need — not what somebody wants you to have. They're all completely galvanized (no painted parts) and have other quality features that you need in a bin for long years of trouble-free service at low cost.

ventilation...

Keep animals comfortable, and you keep them far more thrifty and far more profitable. Chore-Time's Advanced Air Systems approach combines controlled air inlets with the finest variable speed and single speed fans and other components. They're fitted to your specific building. The result is year-around, day-in and day-out comfort for your animals.

See Us For A Full Line Of Chore-Time Equipment



- SALES
- SERVICE
- INSTALLATION

COMPLETE SYSTEMS FOR CATTLE, HOG, POULTRY and GRAIN

2754 CREEK HILL RD., LEOLA, PA 17540
PHONE: 717-656-4151

★ SERVING PA, N.J. and N.Y.

STORE HOURS:
Mon.-Fri.
7:30 to 4:30
Sat. 7:30 to 11:30

Attention Beef & Pork Raisers CUSTOM BUTCHERING

HESS' BUTCHER SHOP



2635 Willow Street Pike
Willow Street, PA

717-464-3374

- We Process the Old Fashioned Way —
- Pudding
 - Hams
 - Bologna
 - Scrapple
 - Bacons
 - Dry Beef

We also specialize in Beef For Your Freezer, Sides of Pork, Sides of Beef.

Freezer Lockers Now Available

FRESH COWS



EVERY WEDNESDAY IS DAIRY DAY AT NEW HOLLAND SALES STABLES, INC. New Holland, PA

If you need 1 cow or a truck load, we have from 100 to 200 cows to sell every week at your price. Mostly fresh and close springing holsteins.

Cows from local farmers and our regular ship pers include Marvin Eshleman, Glenn Fite, Kelly Bowser, Bill Lang, Blain Hoffer, Dale Hostetter, H D Matz, and Jerry Miller

SALE STARTS - 12:00 SHARP

Also Every Wednesday,

Hay, Straw & Ear Corn Sale - 12:00 Noon

All Dairy & Heifers must be eligible for Pennsylvania Health Charts.

For arrangements for special sales or herd dispersals at our barn or on your farm, contact:

Abram Dittenbach, Mgr.
717-354-4341

OR

Norman Kolb
717-397-5538

HEIFERS

BULLS