

## Love Canal leader to address Red Rose Alliance

**NEW HOLLAND** — Lois Gibbs, former resident of Love Canal and founder of the Citizen's Clearinghouse for Hazardous Wastes, will address the Red Rose Alliance at a public meeting

planned on Tuesday, March 23. Ms. Gibbs, who organized the Love Canal Homeowners Association which was successful in bringing the dangers of hazardous waste disposal in her community near Niagara Falls, N.Y. to national attention, will

speak at 7:30 p.m. on Tuesday, March 23, in the Trinity Lutheran Church Hall, New Holland.

Through her efforts, the dangers of hazardous wastes were brought to national prominence, resulting in the development and passage of federal legislation.

Her story is that of a concerned citizen and mother who battled governmental redtape and a huge chemical company for three years until the true story of Love Canal was told.

Her children were among the many residents who were made ill by the chemicals that had been dumped for 35 years in the area.

Finally, in late 1980 the last of the residents of Love Canal were evacuated by former President Carter.

Ms. Gibbs, who now lives near Washington, D.C., organized the Citizens' Clearinghouse for Hazardous Wastes, through which she works with groups and communities concerned with hazardous waste disposal sites.

She is the author of an autobiography, "Love Canal: My Story." She was also the subject of a two-hour CBS-TV movie, "Lois Gibbs: The Love Canal."

The Red Rose Alliance meeting is open to the public.

We Specialize In Aerial Work Using Our Twin Bucket Boom Truck

**ELECTRICAL CONTRACTING**

Specializing In **AGRICULTURAL WIRING**

Also Residential, Industrial And Commercial Work  
Free Estimates

**C. M. HIGH CO.**  
320 King St.  
Myerstown, PA 17067  
Phone: 717-666-7544

We Have Poles In Stock 25', 30', 35' & 45'

More farmers each month prefer to buy their

- EAR CORN
- HAY
- STRAW
- PEANUT HULLS

from us for better value and all around satisfaction. At farm or delivered, any quantity as your requirements may be.  
Area Code 717-687-7631

**ESBENSCHADE TURKEY FARM**  
"America's Oldest"  
PARADISE, PA

**WE ARE NOW THE**

**ALASKA KODIAK WOODSTOVES**

Woodstove Heat  
By the people who know cold

**FACTORY OUTLET**  
For Coal/Wood Stoves/  
Boilers/Furnaces  
Fireplace insert  
**\$595**

**CHESTER B. NOLT**  
30 S. Hershey Ave. (Bareville) Leola, Pa. 17540  
PHONE (717) 656-6898  
Hours: Mon. & Tues. By Appointment  
Wed., Thurs., Fri. 10 to 8; Sat. 10 to 4

**CHALLENGE #2**

Whose Power Shift delivers the most performance in over-100hp 2WD tractors?

**Allis-Chalmers. It's the only 12-speed Power Shift with 6 continuous on-the-go shifts.**

Proven in tests to deliver the most at the drawbar take the least from the fuel tank. Because with just one clutch pack instead of two or more Allis-Chalmers delivers a smooth steady transfer of full power to the drawbar. This efficiency of operation keeps you moving through any job. And there's more. More speeds in the work range below 6.5 mph. Fast or slow gear range. Shift smoothly through 6 on-the-go forward settings without clutching or stopping.

Take the challenge. Compare feature for feature. You'll discover why our line and your Allis-Chalmers dealer are better by design.

**Better by Design**  
**ALLIS-CHALMERS**

**New 3 year tractor service policy now available. See us for details**

1. TPD Waiver to 9-1-82 on all current model tractors
- or
2. 11.9% APR for 3 years (5% dealer participation)
- or
3. 13.9% APR for 5 years (5% dealer participation)
- or
4. Cash in lieu of.

**ROY H. BUCH, INC.**  
Ephrata, RD 2, PA  
717-859-2441

**C.J. WONSIDLER BROS.**  
RD1, Quakertown, PA  
215-536-1935  
215-536-7523

**B. EQUIP., INC.**  
8422 Wayne Hwy  
Waynesboro, PA  
717-762-3193

**WERTZ GARAGE**  
Lineboro, MD  
301-374-2672

**AG. IND. EQUIPMENT CO., INC.**  
1207 Telegraph Rd  
Rising Sun, MD  
301-658-5568  
301-398-6132  
215-869-3542

**GRUMELLI FARM SERVICE**  
Quarryville, PA  
717-786-7318

**PAUL DOTTERER FARM EQUIPMENT**  
R.D. 2, Mill Hill, PA  
717-726-3471

**PETERMAN FARM EQUIPMENT, INC.**  
225 York Road  
Carlisle, PA  
717-249-5338

**BHM FARM EQUIPMENT, INC.**  
Annville, RD1, PA  
717-867-2211

**NICHOLS FARM EQUIPMENT**  
R.D. 1 Bloomsburg, PA  
717-784-7731

**SHARTLESVILLE FARM SERVICE**  
Shartlesville, PA  
215-488-1025  
H. Daniel Wenger, Prop.

**C.J. WONSIDLER BROS.**  
RD 2, Oley, PA  
215-987-6257

**MARSHALL MACHINERY**  
R.D. 4, Honesdale, PA  
717-729-7117

**MECKLEY'S LIMESTONE PRODUCTS INC.**  
R.D. 1 Herndon, PA  
717-758-3915

**AIRVILLE EQUIPMENT, INC.**  
P.O. Box 37,  
Airville, PA  
717-862-3358

**L. H. BRUBAKER, INC.**  
Lancaster, PA  
717-397-5179

**C. J. WONSIDLER BROS.**  
Rt. 309 & 100  
R2 New Tripoli, PA  
215-767-7611

Introducing to the Mid Atlantic Area

## The Nitterhouse Upright Bunker Silo

Featuring a single component design for fast erection and completion. The sections bolt together and the tongue and groove creates a sealed wall surface.

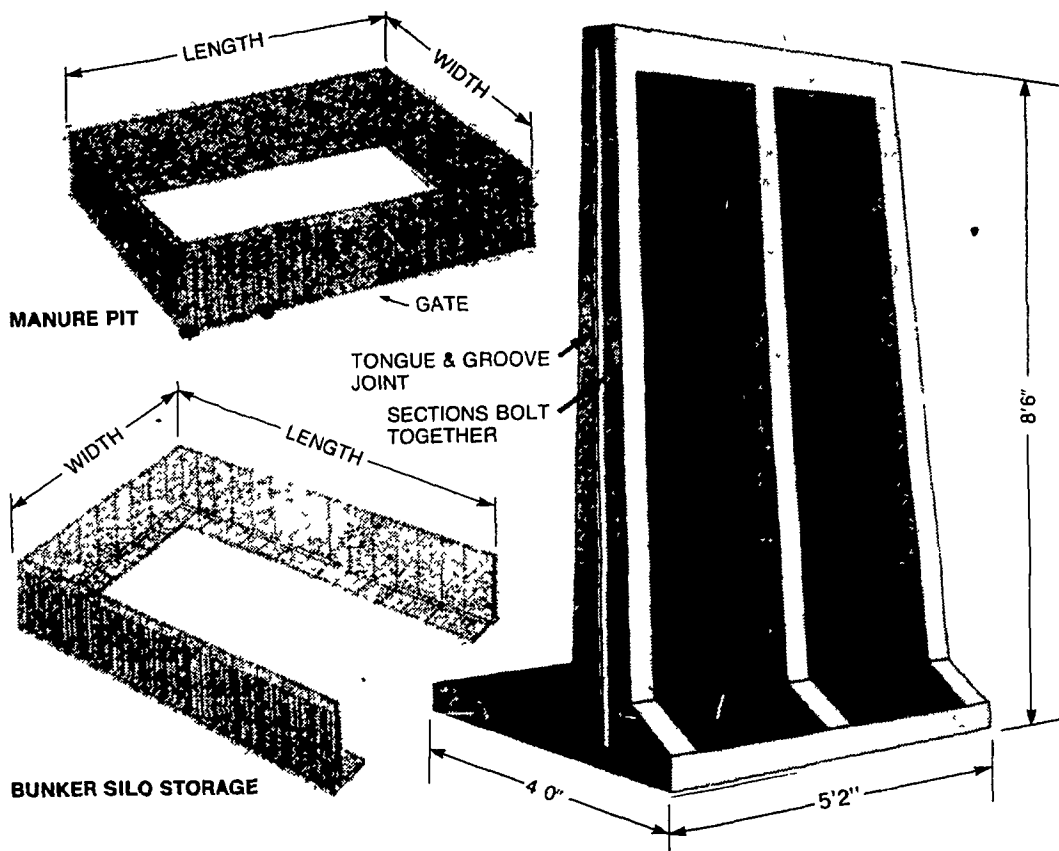
The sections may be dismantled and re-located, customers may select any length or width in increments of 5 feet 2 inches.

In addition to silage storage, these upright units may be used as retaining walls or manure pits.

TONNAGE TABLE FOR 8 FT. SIDEWALLS\*

	30 WIDE	40 WIDE	50 WIDE	60 WIDE
8'0"	323	432	540	646
8'6"	376	504	630	753
9'0"	431	576	720	862
9'6"	485	648	808	971
10'0"	539	720	900	1078
11'0"	593	792	989	1187
12'0"	648	864	1080	1296
13'0"	688	936	1170	1376
14'0"	755	1008	1260	1510
15'0"	808	1080	1350	1616

\*BASED ON LEVEL FILL WITH 45 LBS PER CU FT



**Nitterhouse**

**Concrete Products Inc.**  
Farm Products Division  
Box N Chambersburg, Pa. 17201  
717-264-6154