

USDA begins brucellosis rating

WASHINGTON — The U.S. Department of Agriculture is implementing a new three-stage method for validating states as free of swine brucellosis.

Eighteen states, Puerto Rico and the Virgin Islands - previously rated as "validated free" — are now designated as "State III" states.

Eleven states are listed in "Stage II," the intermediate level, and 12 are in Stage I, "the entry level. Nine states do not qualify for State I, have no programs, or their programs fall short of entry requirements.

The three-stage system was recommended by the U.S. Animal Health Association, an organization representing state animal health agencies and major segments of the livestock industry. It allows for better overall evaluation and permits individual states to measure progress in comparison with others, Becton said.

The State III — or top level — states include California, Colorado, Idaho, Iowa, Maine, Minnesota, Montana, Nevada, New Hampshire, North Dakota, Pennsylvania, Rhode Island, South Dakota, Utah, Vermont, Washington, Wisconsin and Wyoming plus Puerto Rico and the Virgin Islands.

Stage II, or intermediate level, states are Alabama, Arizona, Arkansas, Connecticut, Delaware, Georgia, Hawaii, Illinois, Louisiana, New York and Virginia.

Stage I — entry level — states are Alaska, Florida, Kansas, Kentucky, Maryland, Massachusetts, Michigan, New Jersey, North Carolina, Ohio, Oklahoma and South Carolina.

The nine states with no programs or programs that don't meet entry requirements are Indiana, Mississippi, Missouri, Nebraska, New Mexico, Oregon, Tennessee, Texas and West Virginia.



ABSOLUTE PUBLIC AUCTION

"This Valuable Farm Will Sell Regardless Of Price To the Highest Bidder"

250 Acre Nippenose Valley Farm

Located in Clinton County, Crawford Township. Farm located along Groupe Road on the outskirts of village of Rauchtown, 8 miles south of Jersey Shore on Route 880. "Watch for Auction Arrow."

SAT., APRIL 17, 1982

At Precisely 2:00 P.M.

Buildings & Improvements Include:

2½ story frame house - first floor: large covered concrete porch, very large living room with fireplace and Schrader wood stove, hardwood floors, others with wall to wall carpet. Ornate metal ceiling found in living and parlor rooms. Oil hot air heat. Complete summer kitchen with large windows on the southern exposure, 2 open staircases, 1 carpeted. Large roomy kitchen with cabinets and appliances - Frigidaire refrigerator, Maytag washer, 4 burner Magic Chef gas stove with grill, Medium size parlor room, small den. Second floor: 5 medium size bedrooms, some with wall to wall carpet, some nicely decorated, full bathroom, upstairs enclosed porch, full attic, ½ basement.

Barn

2 story frame bank barn - large partially enclosed confinement lot, fence line bunk feeders, cattle chutes and headgates, various large cattle confinement pens, other areas consisting of concrete pads and bunk feeders for outside pasture feeding.

2 trench silos with approximately 100 ton capacity per silo.

Large steel sided frame calving shed.

car cement block garage, 2 large wire corn cribs.

1½ story frame tool shed with concrete floor. Adjacent to house is large frame butchering shed with fireplace.

Land Improvements Include:

Approximately 100 Acres Tillable; Approximately 150 Acres Pasture & Woodland; Farm Pond, Creek, Several Springs.

TERMS: 10% down day of auction, balance within 30 days or time agreed upon.

Immediate possession of all tillable land given upon request.

Not Responsible For Omissions and Errors On Printed Material.

Lewis Stineberger, Attorney

Lock Haven, Pa.

717-748-3296

Sale For

MR. & MRS. C. ROBERT SHERTZER

Phone: 717-745-3543 or 302-995-3730

Auction Conducted By The:

OMAR LANDIS AUCTION SERVICE

Jay M. Witman

Box 501, Apple & Robert Streets, Ephrata, PA 17522

717-627-0789 - 717-665-5735

"Our Services Often Copied, But Never Duplicated."

COMPLETE DISPERSAL OF DICK BRADY TRACTOR SALES, INC. AT PUBLIC AUCTION

As I am retiring from the farm tractor sales and leasing business - must sell. Located 10 miles west of Erie, Pennsylvania on I-90 at Exit 4, ¼ mile south of I-90 on Rt. 98 to Sterrettania Road (just south of Commodore Downs) follow signs to sale at Herhold's Hobby Horse Farm on

SATURDAY, MARCH 20

10:00 A.M.

SEMI-TRACTORS

1971 IH w/250 Cummins and 13 speed Fuller, 1968 Dodge w/238 GMC 10 speed Fuller - both low mileage and conv. cabs.

FARM TRACTORS

FORDS: 2-9600, 2-9000, 2-8600, 4-8000, 1-5200, 8-5000, 1-4200, 4-4000, 1 new 3600 gas, 2-3000.

CASES: 1-1370, 2-1210, 1-1200, 2-995, 1-885, 1-880 w/loader, 830 gas, 930 gas.

IHC: 1456 w/cab and duals, 1086 w/cab-air, 20.8 tires; 966 w/cab and air, 826 w/cab, 656 gas, 460 gas w/loader, Super M.300.

JOHN DEERE: 3-4020, 1-730, 1-710, 1-620, 1-70, 3-60.

MASSEY FERGUSON: 2-1080, 1-178, 3-165, 1-150, 1-65.

ALLIS CHALMERS: D-17 gas, D-15, 2-D-14.

MM: 1-670, 1-302.

OLIVER: 1850 gas, 770.

LEYLAND: 154 w/loader.

4-WHEEL DRIVE TRACTORS

Case 2470, Case 1410 Demo., 3 low hour Muir-Hill Model 121, Muir-Hill 101, 1124 County, 754 County, 651 Universal.

INDUSTRIAL LOADERS AND BACKHOES

Ford Backhoes: 7500, 5550, 4500, 3000 Ind. loader, Ford MH rd2 Ind. loader, White 580 gas, JD 3 ph hoe, New and used front end loaders, 3 ph fork lift.

FARM EQUIPMENT

HOWARD Rotovators; new E-80, E-70, E-50, P-50, P-60, used S-80 and E-50, new and used front end loaders, 2-10 ft. Niemeyer power harrows, 2-7 shank Wilbeck chisel plows, new and used 12½ ft. cultimulchers (Dunhams), new and used transport disks; 3 new Menegle 3 ph forage harvesters, new 7 hp straw and bedding choppers, log splitters, new FMC and Kuker sprayers, new and used post hole augers.

FARM TRACTOR TIRES

250 new tires; several Rice and Cane tires; 50 new tractor front and wagon tires, wagon rims, 200 used tractor tires, other items.

ALL TRACTORS HAVE BEEN GONE OVER THOROUGHLY AND PUT INTO FIELD-READY CONDITION. Lunch served - Terms Cash, certified check, personal checks w/letter of credit from bank. Register with positive ID. All small equipment sold inside. This is not a consignment sale. TRUCKING AVAILABLE.

DICK BRADY, OWNER

Phone 814/474-5811 or 5129

Delmas Chesley and Sons, Auctioneers

Phone: North East, Pa.

814/725-1303 or 725-1171

COMPLETE AUCTION AND REALTY SERVICE

RD #3 North East, Pa. 16428



COMPLETE HOLSTEIN AUCTION 98 HD-SEMI-SILAGE-BARN EQUIP. THURSDAY, MARCH 25

at 11:30 A.M.

Hope, N.J.

For Charles Castimore, located on Rt. 610, 1 mi. W off of Rt. 519, 3 mi. S of Hope, N.J., 3 mi. N of Bridgeville, N.J. Off Rt. 46, 12 mi S. of Delaware Water Gap! 25 mi. N.E. of Easton, Pa. via Rt. 22 to Rt. 519.

11:30 A.M.

PATZ 80 cow barn cleaner 400 ft. of 2 yr. old chain, 4 Surge 50# milkers, De Laval 75 pump, Surge SP22 pump, S.S. pails, strainers and wash tub, SILAGE 200 ton of top corn silage. SEMEN AND TANK LR21 s/n A2396 tank, 3 amp Paclamar Boot-maker, 23-Westside AB Seaman, 10 Sitation R Maple, 6 RS Victor Domino, 3 Black Knight, 4 Took, 10 Straws Overtop Independent. Bring Tanks for pick up!

12 NOON 98 HI GRADE HOLSTEINS

61 cows, 28 hd fresh recently or Springing. Balance bred and milking well, with many bred for fall freshening. 11 big heifers with a bull since Dec., 7 big fancy open heifers ready to breed, 11 fancy yearlings, 7 started calves, 1 yearling bull. This dairy features many large individuals with tremendous depth and production ability! Vet examined for pregnancy, T.B. & Blood tested for immediate interstate shipment. A home-raised dairy.

Plan to attend this sale. Lunch. Not responsible for accidents!

Blizzard Date March 26

TERMS: Cash or Good Check with proper I.D. Paid in full sale day!

Owner

CHARLES CASTIMORE

201-459-4397 or 5043

Machinery Sale will be held April 10, 1982 with 9 tractors, brand new J.D. 346 baler and full line!

SALE CONDUCTED BY:

COL. FRED R. DANIEL AUCTIONEERS, INC.

Neshanic Sta., N.J.

201-369-4784

(FARM SALES ARE OUR SPECIALTY)



SADDLE UP!

To Better Equipment... Find It In Lancaster Farming's CLASSIFIEDS!

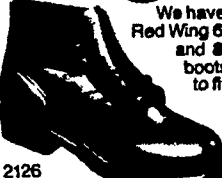
MEMO

HAY, STRAW & EAR CORN SALE

EVERY MONDAY At 11 A.M.

NEW HOLLAND SALES STABLES, INC. Phone 717-354-4341 Lloyd H. Kreider, Auctioneer

Wing It



2126

Sizes 6-13

B-EEEE

Not all sizes in all widths.

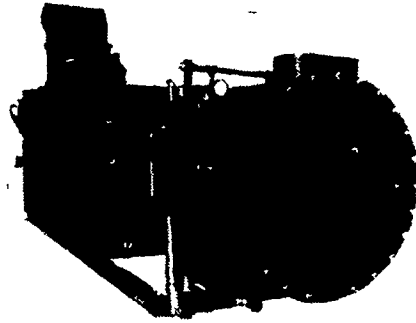
You've earned your Wings!

Red Wings

BOOKS SHOE SERVICE 107 E. STATE ST QUARRYVILLE, PA 17566 717-786-2795 CLOSED WEDNESDAYS

FARMERS SAVE THOUSANDS of DOLLARS on FUEL

a Rettew Furnace can turn farm waste into fuel savings for crop drying, broiler houses, pig farrowing, green houses, equipment building, steam for dairy operations



Model SW Atmospheric or pressurized hot water and steam Burns solid wood up to 54" lengths Hand fired

A Rettew furnace installed on your farm will pay for itself in just a few months and then no more fuel bills to steal your profits. There are tons and tons of free farm waste available on every farm that will supply you all the farm energy you'll ever need. Easily installed in conjunction with your present system. BTU/hr ranges of ½ million to 6 million plus a big federal tax write-off

FUEL AVAILABLE ON MOST FARMS

CORN COBS POULTRY LITTER
BALED CORN FODDER PEANUT HULLS
TIMBER WOOD CHIPS
WOOD WASTE PINE CONES
COW MANURE



RETTEW ASSOCIATES, INC.

HEATING AND DRYING APPLICATIONS

BOX 65, NORTH SHERIDAN ROAD, NEWMANSTOWN, PA 17073 215/689 2511