

# Farm Calendar



**Saturday, March 13**  
Brown Swiss Assn. meeting, 11:30 a.m., Stahl's Seafood and Steak House, Bally, north of Pottstown.  
Breeding Sheep Seminar, Howard and Frederick County 4-H, 9 a.m. - 3:30 p.m., Howard County Fairgrounds.

**Monday, March 15**  
Inter-State District 5 meeting, noon, Willow Valley Restaurant.  
York Hedging Meeting, 7:30-9:30 p.m., 4-H Center, Barr.  
Mini Computer for Farmers meeting, 7:30 p.m., Biglerville High School cafeteria.

**Tuesday, March 16**  
Calfarama '82, York and Adams County Holstein calf and heifer sale, 7:30 p.m., Avalong Farms, Rt. 24, east of York.  
Bradford Agronomy Day, 10:30 a.m. - 3 p.m., Wysox Presbyterian Church.  
Lancaster County Holstein tour.  
N.E. Fruitgrowers meeting, 10 a.m. - 3 p.m., Ramada Inn, Clarks Summit.  
Kent and Sussex County DHIA meeting, Viola, Del.  
York County Estate Planning Program, 7:30 p.m., Dover High School ag room.  
Beekeepers meeting, 7:30 p.m. Room C-119, Penn State Campus, Schuylkill Haven.  
Estate Planning meeting, 7-9:30 p.m., Room C-202, Penn State Campus, Schuylkill Haven.  
ELCO FFA banquet, 7 p.m., middle school cafeteria.

**Wednesday, March 17**  
York County grape meeting for commercial growers, Seven Valley Vineyard.

Home vegetable gardening meeting, 7:30 p.m. - 9:30 p.m., Lancaster Farm and Home Center.  
Turkey Conference, Sheraton Inn, 10 a.m. - 4 p.m., Rt. 15, Gettysburg.  
ABC annual meeting, 10:30 a.m., Centerville Quality Inn.  
Bradford County Spring Hill 4-H dairy meeting, Bill Keeney's, 8 p.m.  
Frederick County, Md. sheep breeders meeting, 7:30 p.m., Extension Office.  
Pennfield Dairy Awards luncheon, Good 'N Plenty Restaurant, Smoketown, 11 a.m.

**Thursday, March 18**  
Small Grain twilight meeting, Wye Institute, Maryland.  
Home vegetable gardening meeting, 9:30-11:30 a.m., Lancaster Farm and Home Center.  
Poultry Educational Meeting, 7:30 p.m., Lancaster Farm and Home Center.  
National Agriculture Day 1982. Theme: Agriculture - It's Your Heartbeat, America.  
Fayette County Annual Extension Meeting, 7 p.m., Celisan's Restaurant, Markleysburg.  
Annville-Cleona FFA banquet, 6:45 p.m., high school cafeteria.  
Solanco FFA banquet, 7 p.m., high school cafeteria.  
Wayne County Dairy Day, 10 a.m. -

will not give you the best yields. Don't be in too big of hurry, slow down and leave the weather catch up to you.

3 p.m., Veterans Memorial Armory.

**Friday, March 19**  
York County Fruit Trees Meeting, Westland Fruit Farm, Strinestown.  
Lehigh Valley Co-op annual meeting, noon, Host Farm.  
Franklin County Guernsey Breeders Association meeting, 7 p.m., New Franklin Community Center.  
Berks County Conservation District Banquet, 7 p.m., Fleetwood Grange.  
Wine Grape Growers spring meeting, 8:30 a.m. - 3:30 p.m., Lancaster Farm and Home Center.

**Saturday, March 20**  
S.E. Pa. Extension Part-Time Farmers Conference, 9 a.m. - 4 p.m., Penn State Berks Campus.  
Md. Angus Association annual meeting, 9:30 a.m., Bullocks Restaurant, Westminster, Md.  
Adams County Annual Beef Ball and Parade of Bulls, 6 p.m., Atland's Ranch, east of Abbottstown.  
Pa. Ayrshire Breeders Association annual meeting, Embers Restaurant, Carlisle.  
Bradford County Holstein Tour, 11 a.m., William Brown's farm, Rome.

## Now is the Time

(Continued from Page A10)

**To Prune Fruit Trees**  
Whether you have a few or several hundred fruit trees, orchard pruning need not be delayed until spring. It may be started in colder weather. But it is a good practice to work on the hardest trees first.

Early pruning can involve some problems from winter injury, but in many cases an early start will be necessary to complete pruning

of large orchards before spring. By confining early work to the older, hardier trees, fruit growers can keep injury to a minimum.

Apple and pear trees are the hardest of the fruits, with plums and sour cherries next in order. Because peach and sweet cherry trees are most tender, delay their pruning, particularly the younger trees, until later in March.

## Shift on the Go!

Yanmar brings big tractor features down to size with Powershift and Live PTO in compact tractors. Powershift means clutchless on-the-go shifting to keep you going where others bog down. 2-Speed Live PTO keeps implements working at full power even when tractor is stopped. Plus more standard features and Yanmar's dependable 3-cylinder diesel engine.



You Can Use a Yanmar!

**YANMAR TRACTOR [U.S.A.] INC.**

13, 15, 18, 22, 26 and 33 H.P. Models Available with St. Shift or Auto. Trans.

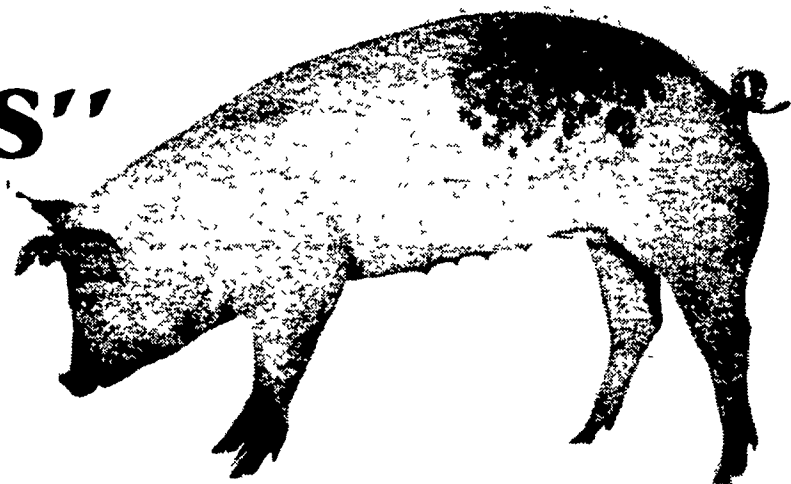
★ 100% FINANCING AVAILABLE ★

**MARTIN HARDWARE & EQUIPMENT CO.**

Rt. 501, 1 1/2 Miles South of Schaefferstown, PA  
Phone 717-949-6817 Open Mon.-Fri 8 to 8; Wed. 8 to 12; Sat. 8 to 5

# Put New Life Into Your Sow Herd with "KLEEN LEEN GILTS"

If you want to improve your herd in the shortest possible time, trade in that old sow on a Kleen Leen Gilt. After all, gilts contribute half of the income potential of hogs you market. And every "checker gilt" we sell has proven her growing ability on the demanding "Kleen Leen Growth Selection Curve."



Get One Kleen Leen Gilt **FREE** With Every 10 Purchased (Min. Order 20 Gilts)

Applies to all orders received prior to April 30, 1982  
For shipment prior to September 30, 1982

Contact one of the Purina Dealers listed below for more information

**HESS MILLS**

PHONE 717-442-4183  
717-768-3301  
PARADISE PA 17562

**HIGH BROS.**

PHONE 717-354-0301  
GORDONVILLE, PA 17529

**K & K FEED, INC.**

PHONE 717-666-2324  
23 N PARK ST RICHLAND, PA 17087

**UMBERGER'S MILL**

PHONE 717-867-5161  
FONTANA, PA 17042

**KEYSTONE MILLS**

John B Kurtz  
PHONE 717-354-4616 717-738-1088  
RD3 EPHRATA, PA 17522

**McCRACKEN'S FEED MILL, INC.**

PHONE 717-665-2186  
2 NEW CHARLOTTEST MANHEIM PA 17545

**THE PURINA PROGRAM**



**CLARKS AG. CENTER**

MAIN ST  
TURBOTVILLE PA 17772  
717-649-5158

**WEST WILLOW FARMERS ASSN., INC.**

PHONE 717-464-3386  
WEST WILLOW, PA 17583

**SOUTHERN DIVISION**

West Willow Farmers Assoc., Inc.  
PHONE 717-529-2113  
RTE 472 AT UNION, PA  
RD 1, OXFORD, PA 19363

**M.G. HENNINGERS & SONS INC.**

BERRYSBURG, PA 17005  
717-362-3333

**J. P. ANIMAL SUPPLY**

2497 Tome Hwy.  
Rising Sun, MD  
301-658-5795

*Anthony's Feed Mill*

PHONE 215-488-6211  
STRAUSTOWN, PA 19559