

Livestock market and auction news

Weekly Summary

Friday, March 5

Report supplied by PDA

CATTLE: 6054. Compared with 6147 head last week, and 5541 head a year ago. Compared with last week's market: Slaughter steers highly uneven, mostly .50-1.00 lower, although prices were 1.00-2.00 higher at the end of the week; Sl. heifers steady to 1.00 lower; Sl. cows steady to 1.50 lower; Sl. bullocks .50-1.50 lower; Sl. bulls steady to strong. Sl. steers: High Choice & Prime No. 2-4, 65.50-8.50 with few to 70.65; Choice No. 2-4, 63.00-67.00, with few to 68.50; Good 58.00-63.00; Standard 50.00-55.00, with few to 58.00. Sl. heifers: Choice 59.00-62.50, few 63.50; Good 53.00-59.00; Standard 45.00-53.00. Sl. cows: Utility & Commercial 38.50-43.50, few to 45.00. Cutters 36.75-41.50; Canner & L. Cutter 33.00-38.50 with few down to 29.00; Shells down to 24.00. Sl. bullocks: Choice 57.50-60.50; Good 52.50-

57.50; few Standard 47.50-51.75. Sl. bulls: Yield Grade No. 1, 1000-2400 lbs. 48.00-56.25; Yield Grade No. 2, 900-1450 lbs. 45.00-52.50.

FEEDER CATTLE: Steers, Large Frame No. 1, 300-700 lbs. 55.00-62.50; Large Frame No. 2, 300-850 lbs. 45.00-54.00; Medium Frame No. 1, 300-800 lbs. 48.00-66.00, with few to 66.00. Heifers, Medium Frame No. 1, 300-800 lbs. 44.00-54.00. Bulls Medium Frame No. 1, 400-700 lbs. 53.00-60.00.

CALVES: 4187. Compared with 4174 head last week and 3264 head a year ago. Vealers grading Good & Choice steady to 10.00 lower, Standard & Good mostly steady to 5.00 higher. Few Prime 100.00-116.00; Choice 84.00-100.00 with few to 111.00; Good 70.00-89.00; 110-130 lbs. 60.00-70.00; 90-110 lbs. 54.00-64.00; 65-90 lbs. 50.00-63.00; Utility 50-110 lbs. 35.00-50.00.

FARM CALVES: Hol. Bulls 80-125 lbs. 55.00-115.00, mostly 60.00-90.00; Hol. Heifers 85-135 lbs. 50.00-122.00, mostly 60.00-100.00.

HOGS: 7524. Compared with 7651 head last week and 7156 head a year ago. Barrows and gilts mostly .50-1.50 lower. US No. 1-2 200-240 lbs. 49.00-50.60. No. 1-3 200-250 lbs. 48.00-49.25; No. 2-3 200-275 lbs. 47.00-48.00. No. 1-3 140-190 lbs. 43.00-48.00; Sows steady to strong; US No. 1-3 300-650 lbs. 43.00-47.75, few to 50.25; No. 2-3 300-750 lbs. 38.00-44.50. Boars 30.00-37.00.

FEEDER PIGS: 707. Compared with 942 head last week and 1092 a year ago. Feeder pigs steady to 4.00 higher. US No. 1-3 20-35 lbs. 15.00-29.00; No. 1-3 35-50 lbs. 25.00-38.00; No. 1-3 50-75 lbs. 35.00-44.00 per head.

Bellville Auction

Bellville, Pa.

Wednesday March 3

Report Supplied by PDA

CATTLE: 155. Compared with last Wednesday's market, slaughter cows steady to 50 cents lower. Couple Standard slaughter steers 54.00&55. One Choice slaughter heifer at 57.00. Utility and Commercial slaughter cows 38.50-42.25, couple 42.75, Cutters 36.75-40.75, Canner and Low Cutters 35-37.50, Shells down to 31.50. Couple Yield Grade #1, 1260-

1495 lbs. feeder bulls 45.00 & 49.60.

CALVES: 220. Few choice vealers 90.00-98, Good 70.00-84, Standard and Good 70-100 lbs. 57.00-63. Farm Calves: Hol. Bulls 90-125 lbs. 64.00-80, couple to 87.00, few Hol Heifers 90-140 lbs. 68.00-100.

HOGS: 235. Barrows and gilts \$2.75-\$3 lower. US No. 1-2 220-250 lbs. barrows and gilts 48-48.85, No. 1-3 205-250 lbs. 47.00-48, lot No. 2-3 280 lbs. at 47.00 US No. 1-3 300-570 lbs. sows 42-46.50. Boars 30.00-35.

FEEDER PIGS: 201. US No. 11-3 25-45 lbs. feeder pigs 29.00-38 per head, No. 1-3 50-70 lbs. 35.00-44 per head.

SHEEP: 3. Not enough of any one grade to establish a market. **GOATS:** 13. \$23.00-\$50 per head. **HOLSTEIN DAIRY COWS:** \$375-\$950 per head, couple \$1320 per head.

New Holland Dairy

New Holland, Pa.

Wednesday, March 3

Report supplied by auction

Reported receipts of 68 cows, 75 heifers, and 3 bulls. Market stronger. Load of Butler County springers

750.00-1060.00; Load of Pa. fresh cows, 825.00-1220.00; Load of N.Y. fresh cows, 775.00-1525.00; springers 850.00-1330.00; Load of Pa. fresh cows, 1060.00-1450.00; Load of Pa. fresh cows, 650.00-115.00.

Locally consigned cows 560.00-1150.00; Springing heifers 585.00-1190.00; Open heifers 300.00-610.00; Bulls 460.00-510.00.

Lancaster Weekly

(Continued from Page A2)

on Prime special fed. Demand good for calves return to farm.

VEALERS: Prime special fed 240-250 lbs. 105.00-116.00; Choice 160-280 lbs. 86.00-100.00, few 100.00-110.00; high Good and low Choice 150-270 lbs. 70.00-85.00, 120-150 lbs. 62.00-72.00, 105-115 lbs. 60.00-64.00, 80-105 lbs. 50.00-60.00, few 65-80 lbs. 46.00-52.00.

RETURNED TO FARM: Buy 90-115 lbs. holstein heifers 75.00-100.00, 120 head 110.00-122.00; bulk 100-115 lbs. holstein bulls 85.00-90.00, few 90.00-98.00, 85-95 lbs. 60.00-85.00.

DOUBLE BENCH LAWN SWING

5% OFF till April 1

Redwood or Outdoor Wood, Wholesale and Retail



COMPLETE LINE OF REDWOOD LAWN FURNITURE

- GLIDER
- PICNIC TABLE
- LAWN CHAIR & TABLE
- PORCH SWINGS
- DOUBLE BENCH LAWN SWING

JONAS S. EBERSOL

1 1/2 MILES NORTH OF BIRD-IN-HAND ON
2689 Stumptown Road
Box 461, Bird-in-Hand, PA 17505
★ DEALER INQUIRIES INVITED ★

NEED YOUR MILKING SYSTEM UPDATED?

Check Our Products & Prices

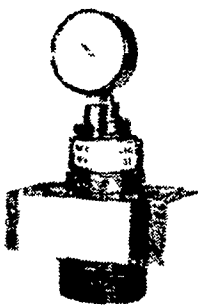
Westfalia VACUREX 5000

The "Big System" Precision Vacuum Regulator For All Milking Systems.

The VACUREX 5000 gives precise vacuum control automatically, eliminating deviations from your present level, and fits any milking system, is easy to install, adjust and maintain

ALSO AVAILABLE:
VACUREX 2400

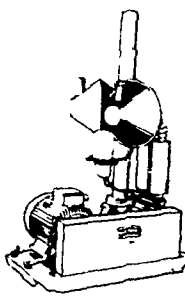
The precision vacuum regulator for standard milking systems



Westfalia RPS 2800

The high capacity pump for today's big herds.

Built for years of tough, dependable, quiet service. The RPS 2800 will give you standby strength, uniform air flow, a full 3" inlet, and an oil reclaimer for economy and flexibility.



Visit Our Store At:

1860 W. MAIN ST., EPHRATA, PA
STORE HOURS:

Mon. 10:00 AM-4:30 PM Thur. 12:00 PM-4:30 PM
Tue. 12:00 PM-4:30 PM Fri. 10:00 PM-4:30 PM
Wed. 10:00 AM-4:30 PM Sat. by appointment

CLYDE C. LUTZ

DAIRY EQUIPMENT

1316 Apple Street, Ephrata, PA 17522
PH: 717-738-1718 24 HOUR SERVICE
717-733-1224



THE VICON PROMISE: A PERFECT SEEDBED.

A seedbed black as midnight. Flat as a tabletop, smooth and loose. The kind of seedbed that requires five, six, even seven passes with your present equipment.

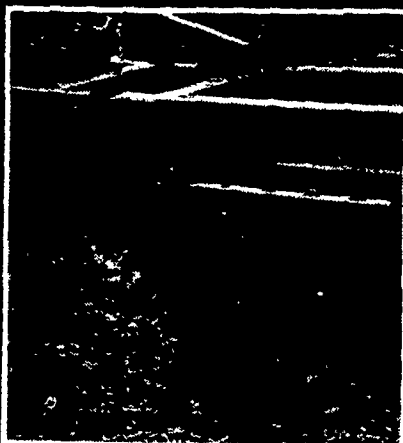
Vicon can deliver that seedbed faster and more economically with its new extra wide Power Harrow. The Vicon Power Harrow stirs the soil with a side-to-side, boiling action that leaves the ground level and smooth. Moisture stays down deep.

Used after a moldboard plow and secondary tillage, the Vicon Power Harrow will do more in less time than any finishing tool on the market or on your farm. That's why we deliver the perfect seedbed efficiently and at less cost.

If you're having trouble incorporating your chemicals, the Vicon Power Harrow will do a perfect job of that too. One pass with a Vicon Power Harrow gives better horizontal and vertical

incorporation than two passes with a disc. Independent crumbler adjustment accurately controls working depth.

But make us prove it. Challenge your Vicon dealer to make good with a demonstration of the new Vicon Power Harrow in a choice of 20- and 25-ft. extra wide models as well as in 10- and 15-ft. widths. He has grounds for proof.



Vicon Farm Machinery, Inc.
P.O. Box 6313
Chesapeake, VA 23323
804/485-1600

Boyd Moody - 2113 Circle Road, Carlisle, PA 17013 717/243-3062