

Livestock market and auction news

Lancaster Weekly

(Continued from Page A2)

Demand fair for return to farm. Vealers prime 240-350 lbs. 110.00-115.00, few early in week 120.00-126.00; Choice 160-270 lbs. 88.00-102.00, few 102.00-107.00; Good 160-270 lbs. 75.00-85.00; 120-160 lbs. 62.00-75.00; 90-115 lbs. 52.00-64.50; 70-80 lbs. 48.00-54.00; return to farm Bulls 90-115 lbs. 70.00-105.00, few 85-95 lbs. 60.00-75.00; Holstein heifers 75-100 lbs. 100.00-125.00; 65 head Tuesday 100-115 lbs. 129.00-136.00.

Chambersburg Auction

Thursday, Feb. 25

Report supplied by PDA

CATTLE: 297. Choice .75 to 1.50 higher; standard & good about steady. Slaughter cows uneven! SI. steers: few Choice No. 2-4 1050-1375 lbs. 61.75-66.85; few Good 57.00-61.50; few Standard 50.50-57.00; SI. heifers: few Choice 61.00-67.00; few

Good 56.50-58.50; SI. cows: few Utility & Commercial 39.50-45.00; Cutters 38.00-42.00; few Canner & L. Cutter 35.75-39.00; Shells down to 30.00. SI. bullocks: few Standard 50.50-52.75.

CALVES 501. Vealers 104.00-105.50. Few Choice 88.00-102.10; few Good 65.00-85.00; few Standard & Good 70-90 lbs. 70.00-100.00.

FARM CALVES: Hol. Bulls 85-115 lbs. 56.00-100.00, mostly 80.00-90.00; Hol. Heifers 90-140 lbs. 63.00-104.00.

HOGS: 125. \$1 lower. US No. 1-2 49.00-49.50; No. 1-3 43.50-47.50.

FEEDER PIGS 50. Few US No. 1-3 25-35 lbs. 26.00-32.00 per head.

SHEEP: 9. Few Choice 75.00-110.00.

Indiana Auction

Thursday, Feb. 25

Report supplied by PDA

Markets: Cows stronger to .50 higher.

CATTLE: 139. SI. steers: few Good 58.00-58.25; few Standard

48.75-51.00; SI. heifers: few Standard 43.00-48.75; SI. cows: few Utility & Commercial 40.00-44.25. Cutters 37.00-41.00; few Canner & L. Cutter 33.00-37.75; Shells down to 30.50. SI. bullocks: few Standard 40.75-48.25. SI. bulls: few Yield Grade No. 1, 1190-1995 lbs. 49.00-52.25.

FEEDER CATTLE: Steers, few Medium & Large Frame No. 1, 300-600 lbs. 51.50-60.00; few Medium & Large Frame No. 2, 510-785 lbs. 40.00-43.75. Bulls: good medium to large frame #2 625-825 lbs. 38.00-42.00. Heifers, few Medium & Large Frame No. 1, 350-650 lbs. 43.00-53.50.

CALVES: 95, steady. Few Choice 93.00-106.00; Few Good 80.00-92.00; few Standard & Good 90-110 lbs. 54.00-60.00; 60-85 lbs. 40.00-55.00.

FARM CALVES: Hol. Bulls 90-105 lbs. 60.00-78.00; Hol. Heifers 90-100 lbs. 71.00-90.00. Beef cross bulls and heifers 60-95 lbs. 54.00-87.00.

HOGS: 100, 4.00 lower. US No. 1-2 200-245 lbs. 49.00; No. 1-3 200-255 lbs. 48.25-49.00; No. 2-3 200-240 lbs. 46.25-46.75; Sows mostly 1.00 lower, few US No. 1-3 300-500 lbs. 45.00-48.50. Boars 45.00-48.50.

FEEDER PIGS: None.

Dewart Auction

Dewart, Pa.

Monday, Feb. 22

Report supplied by PDA

CATTLE 190. Compared with last Monday's market, Choice 1100-1300 lbs. No. 2-4 slaughter steers 61.50-65.00, couple to 66.25, few Good 59.75-62.25, few Standard 47.25-55.00. Few Choice slaughter heifers 57.75-61.00, few Good 51.50-56.75. Utility & Commercial slaughter cows 38.75-43.75, couple to 44.25, Cutters 36.50-39.50, couple 41.50, Canner & Low Cutter 33.00-36.50, Shells down to 25.00. One Good slaughter bullock at 56.50. Yield Grade #1 900-1850 lbs. slaughter bulls 47.25-55.50. Few Large Frame #2 350-600 lbs. feeder steers 51.00-58.00.

CALVES 208. One Prime vealer at 112.00, Choice 95.00-108.00, few Good 74.00-87.00, Standard & Good 70-100 lbs. 54.00-61.00. Farm calves, holstein bulls 85-130 lbs. 65.00-103.00, mostly 85.00-98.00; few holstein heifers 90-130 lbs. 68.00-122.00.

HOGS 347. US No. 1-2 210-235 lbs. barrows & gilts 50.90-51.50, couple lot 51.90, No. 1-3 200-250 lbs. 50.30-50.80, one lot No. 1-3 193 lbs. 49.50. US No. 1-3 350-575 lbs. sows 43.00-45.50. Boars 33.00-36.50.

FEEDER PIGS 106. US No. 1-3 35-50 lbs. feeder pigs 28.00-40.50 per head.

SHEEP 1. No market test.

G&M Livestock

Monday, Feb. 22

Duncansville, Pa.

Report supplied by auction

Compared to last week, market report cows-active, steers-strong, hogs-weak.

STEERS: Good to Choice 60.00-64.50; Standard to Good 56.00-60.00; Utility 48.00-54.00.

HEIFERS: High Choice and Prime 62.00-65.00; Good to Choice 56.00-62.00; Standard 50.00-56.00; Utility 42.00-50.00.

FEEDERSTEERS: Good to Choice 300-600 lbs. 48.00-56.00; Standard to Good Feeder Heifers 300-600 lbs. 48.00-53.00.

BULLS: 1100-1660 lbs. 54.00-62.00; 900-1100 lbs. 48.00-56.00.

COWS: High Choice to Prime 42.00-46.00; Couple to 48.00; Good 40.00-42.00; Utility 36.00-40.00; Cutters 32.00-36.00; Cannors Down to 30.00.

CALVES: High Choice 90.00-99.00; Good to Choice 70.00-90.00; Standard to Good 50.00-70.00; Utility down to 30.00.

FARM CALVES: Hol. Bulls 90-120 lbs. 80.00-98.00; Hol. Heifers 90-120 lbs. 85.00-115.00.

FEEDER PIGS: 35-50 lbs. 32.00-36.00.

HOGS: 200-240 lbs. 49.00-51.60; 170-300 lbs. 47.00-49.00.

SOWS: 42.00-49.00.

BOARS: 34.00-38.00.

SHEEP: LAMBS 46.00-54.50.

Belleville Livestock

Belleville, Pa.

Wednesday, February 24

Report supplied by PDA

CATTLE 110: Compared with last Wednesday's market, slaughter cows 1.75-2.25 higher. Individual Standard slaughter steer at 53.25. Few Utility slaughter heifers 42.60-44.60. Utility and Commercial slaughter

cows 39.00-42.85, few 44.00, Cutters 37.00-40.00, Canner and Low Cutters 35.00-38.00. Few Yield Grade #1, 975-1685 lbs. slaughter bulls 47.50-49.50.

CALVES 142: Few Choice vealers 92.50-98.00, few Good 84.00-86.00, Standard and Good 70-95 lbs. 54.00-62.00. Farm Calves: Hol. Bulls 85-135 lbs. 65.00-106.00; Few Hol. Heifers 90-150 lbs. 71.00-104.00.

HOGS 217: Barrows and gilts 1.00-1.50 lower. Few lots US No. 1-2 205-230 lbs. barrows and gilts 50.85-51.50, No. 1-3 220-255 lbs. 49.75-51.00, No. 2-3 270-295 lbs. 45.00-49.75. US No. 1-3 350-475 lbs. sows 45.00-48.00. Few Boars 30.25-35.25.

FEEDER PIGS 100: Few Lots US No. 1-3 20-35 lbs. feeder pigs 24.50-38.50 per head, No. 1-3 50-75 lbs. 43.00-50.00 per head.

SHEEP 5: Few Slaughter ewes 19.00-34.00. HOLSTEIN DIARY COWS 480.00-1050.00, COUPLE 1525.00 PER HEAD.

Belknap Livestock

Dayton, Pa.

Wednesday, February 24

Report supplied by PDA

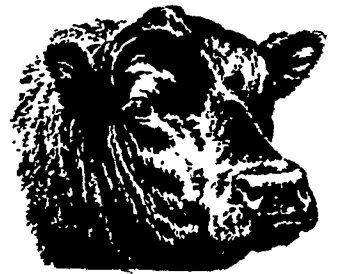
CATTLE 96: Individual Choice slaughter steer at 63.75, One Good at 55.25, few Standard 49.75-54.25. Couple Good slaughter heifers 49.00 & 52.50, few Standard 42.00-45.00. Utility and Commercial slaughter cows 40.00-43.00, few Commercial 4-5, 37.75-39.00, Cutters 37.00-41.00, Canner and Low Cutters 33.00-37.50. Yield Grade #1, 1295-1860 lbs. slaughter bulls 49.75-53.75. Few Medium Frame #1 & 2, 450-650 lbs. feeder heifers 42.50-51.50. Large Frame #2, 370-650 lbs. feeder bulls 40.00-47.00.

CALVES 104: Individual Prime vealer at 110.00, Choice 93.00-110.00, few Good 79.00-91.00, Standard and Good 90-120 lbs. 50.00-65.00, 65-85 lbs. 40.00-50.00, Utility 35-85 lbs. 25.00-40.00. Farm Calves: Hol. Bulls 95-125 lbs. 60.00-95.00.

HOGS 193: Barrows and gilts 2.00 lower. US No. 1-2 220-240 lbs. barrows and gilts 50.00-50.75, No. 1-3 200-250 lbs. 49.00-50.00, No. 2-3 210-260 lbs. 47.00-49.00, lot 45.25, lot No. 1-3 195 lbs. at 45.00, lot #1-3 163 lbs. 37.00. Sows 2.00 lower. US No. 1-3 300-590 lbs. sows 43.00-47.50, few No. 2-3 220-585 lbs. 38.00-43.00. Boars 30.00-34.00.

FEEDER PIGS 59: US No. 1-3 15-25 lbs. feeder pigs 13.00-15.00 per head, few No. 1-3 35-50 lbs. 31.00-36.00, few No. 1-3 60-65 lbs. 38.00-42.00 per head, lot No. 1-3 90 lbs. at 39.00, Utility 30-45 lbs. 13.00-22.00 per head.

SHEEP 4: Few Good 55-65 lbs. wooled slaughter lambs 45.50-46.00. Few Slaughter ewes 15.00-29.50.



CUSTOM SOYBEAN ROASTING ON YOUR FARM
JONAS ZIMMERMAN
 RD #1
 Lebanon, PA
 717-866-4924

MANURE

200 tons. \$6 per ton load on your truck.

VINTAGE SALES STABLES, INC.

Box 100 Paradise, PA
 717-768-8204

ATTENTION HAY FARMERS

Giorgi Mushroom Co. is buying mulch hay & crushed cobs for mushroom compost.

Call us for current prices.

Giorgi Mushroom Co.

Box 96
 Temple, PA 19560
 215-926-2139 Ext. 236

HAY-STRAW-CORN-MISC

Sale every Monday
 12:00 Noon Sharp
 Dewart Livestock Market
 Dewart, PA
 For Information Call

H.H. Mylin
 717-568-7271

George H. Detrick
 717-568-5454

Zeller Agri Services

High Pressure
 Washing & Disinfecting
 Poultry Houses, Hog Buildings,
 Calf Barns
 Mite & Beetle Spraying
 Complete Ventilation &
 Security Alarm Specialists

RD 1, Elizabethville, Pa. 17023
 717-362-3860

ATTENTION CATTLE FEEDERS CATTLE FARMERS

Take advantage of Vintage Sales Stables, Inc.

FRIDAY CATTLE SALE

NO WAITING TO UNLOAD - PACKERS
 NEED CATTLE FOR MONDAY KILL

Less Shrink! - Our Friday cattle have been selling well - SOLD: 64,037 cattle; 38,909 calves, 38,158 hogs. Increase in cattle 1981: 17,000 we prove it on Tuesday, we will prove it on Friday.

Trucks available for local and long distance hauls. Don't miss this great sale!

HOG SALE EVERY WED. & SAT. at 9:00 A.M.
 HAY, STRAW & GRAIN SALE EVERY FRI. at 1:00 P.M.

VINTAGE SALES STABLES, INC.

L. Robert Frame, Manager
 Office - 717-442-4181 or 768-8204
 Home - 215-458-5060 or 458-8518
 CALL COLLECT FOR INFORMATION

ONE STEP TRANSIT

RAY R. HARBOLD

R.R. 1 - Hershey, Pennsylvania 17033 - 717-964-2248

Providing expert care and cleanliness for your cattle by either gooseneck or tractor-trailer trucking
 LOCALLY or NATIONWIDE

