

FRIDAY, MARCH 5

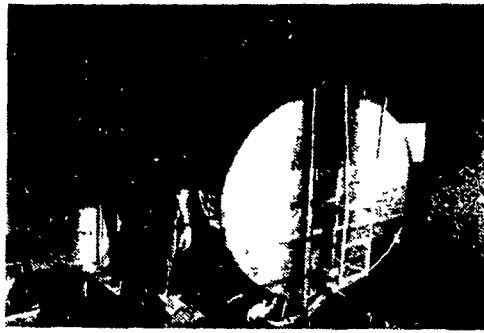
9 A.M. - 3 P.M.



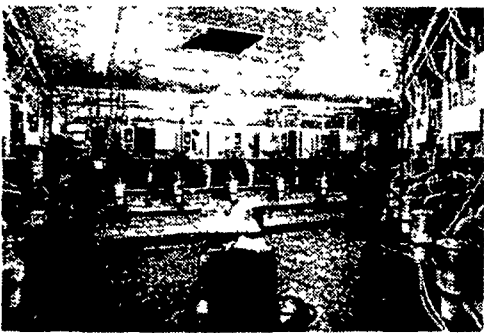
The Bowman Family Farm is operated by John and Betty Bowman and children; son Donald and his wife, Cathy, daughters Susan and Sandra, and sons Jim and Tom. This farm has been in the Bowman family since 1936. They farm 1700 acres, of which 1000 acres are corn.



Therma-Stor heat reclaiming units



3000 Gal. Dari-Kool tank



Bou-Matic 18 Stall Trigon Milking Parlor

This New Facility Features:

- Kraiburg Cow Mats by Vanco
- Natural Air Ventilation
- Gravity Flow Manure Storage and Equipment
- Drive Thru Feeding System
- Van Dale Feed Mixer
- Free Stall Alley Scraper System by K&S
- Two Bunker Silos
- Patz Gutter Cleaner
- Complete Grain Drying and Storage System

OPEN HOUSE

JOHN R., BETTY J. BOWMAN

R.D. 4, BLOOMSBURG,



See the new 90'x212' freestall cow stalls and 40'x52' milking area designed and engineered by M Building Systems.



Interior view of cow barn with drive thru feeding system

REFRESH

DOOR PRIZES



Zimmerman self-lock with tile feed trough.