

Public Sales Register

Closing Date - Monday, 5:00 P.M. of each week's publication

SAT. APRIL 10 - 9 A.M. Public Sale of Large selection of Shrubbery, Trees and Ferns. Located along Union Grove Rd., 1 mi. east of Terre Hill. Spring Grove Nurseries, Owners. Nevin Martin and Lewis Groff, Auctioneer.

SAT. APR. 10 - 10 A.M. Public Sale of Farm, Tractors and Farm Equipment. Located on Rt. 443, 1 mi. west of Rt. 443 and Rt 183 intersection, near Friedensburg in Wayne Twp., Schuylkill Co., PA. Vera Bowen, Owner. Jay Riegel, Jr., Auctioneer.

SAT. APR. 10 - 10 A.M. Public Sale of Antique Tractors, Machinery, Nice Antiques, Household and Glassware. Located taking U.S. Rt. 15 Business approx 4 mi. south of Gettysburg, PA, turn left at Greenmount Food Market and continue approx. 2 1/4 mi. to sale. Mrs. Fred (Viola) Green, Owner. Owner. C. David Redding, Auctioneer.

MON. APR. 12 - 2 P.M. Danville Livestock Market, cattle and hog auction. Located Old Route 11, Danville, PA. Melvin M. Lehman, owner.

FRI. APRIL 16 - 5:30 P.M. Gap Auction. Antiques and Household Goods sold at every auction. Located off Rt. 41, Lancaster Turkey Hill Minit Market, cross RR bridge, Ira Stoltzfus & Son, Auctioneers.

SAT. APRIL 17 - 6:30 P.M. Danville Livestock Market, horse sale located Old Route 11, Danville, PA. Melvin M. Lehman, owner.

SAT. APRIL 17 - 9 A.M. Complete Grocery Store in business over 100 years. 8 mi. west of Millville, PA at Pine Summit. Owner, Joy Dewald. Conducted by Fraley Auction Co. 546-6907

SAT. APR. 17 - 10 A.M. 2nd Annual Consignment Machinery Auction. Located on Rt. 6, Mansfield, PA. Canyon Implements, AC, NH, NI dealer. Owner, Dick Crittenden Auction Co.

SAT. APR. 17 - Public Sale of New and Used Lawn and Garden Equipment and Tractors. Located Rt. 322 East Hinkletown, turn left to Martindale, turn left on Grist Mill Rd. to auction on right. Lawn Care of PA, Daniel Z. Martin and Son, Randal Kline, Lloyd Kreider and Roy Good, Jr., Auctioneers.

MON. APR. 19 - 2 P.M. Danville Livestock Market, cattle and hog auction. Located Old Route 11, Danville, PA. Melvin M. Lehman, owner.

WED. APR. 21 - 9 A.M. Consignment Sale by David H. Good located 1/2 mile North of Route 23 on North Maple Ave. in Leola. Lancaster Co., PA. Watch for sale signs. F. Snyder, R. Martin, C. Wolgemuth J. Fry and L. Horst, Auctioneer.

FRI. APR. 23 - 7 P.M. Special Horse Sale of Horses and Mules at New Holland Sales Stables, Inc. 12 miles East of Lancaster, Pa. just off Rt. 23, New Holland, Pa. Abe Diffenbach, Manager.

FRI. APRIL 23 - 6 P.M. Public Sale of Bred and Open Gifts and Boars. Arnold's 22nd Production Sale located at the Lebanon Fairgrounds, Lebanon, PA. Leon and Thomas Arnold, Owners. Harry Bachman, Auctioneers.

FRI. and SAT. APR. 23 and 24 - Evening. Consignment Sale of Farm Machinery, Building Materials, Household, Antiques, Guns and Etc. Located at Newburg and Hopewell Firehouse.

Phone 717-423-5417 or 717-423-6313

FRI. APRIL 23 - 5:30 P.M. Gap Auction. Antiques and Household Goods sold at every auction. Located off Rt. 41, Lancaster Turkey Hill Minit Market, cross RR bridge, Ira Stoltzfus & Son, Auctioneers.

SAT. APRIL 24 - 16th Colonial Charolais Spring Sale, at the Farmers Livestock Exchange, Winchester, VA. Sponsored by the Colonial Charolais Assoc. Sale managed by Buzz Garey, 100 Walnut Lane, Morrisville, PA 19067.

SAT. APRIL 24 - 10 A.M. Hans Herr House Benefit Auction located at Lampeter Community Building along Rt. 741, Lampeter, Penna. Quilts, Antiques, various tools, etc. Any donations for sale contact Earl Groff at Herr

House, 717-464-4438. Carl, John Diller and other area auctioneers.

SAT. APRIL 24 - 9 A.M. 2nd Annual Spring Public Auction of Lawn and Garden Equipment, Hardware and Tools by Farmersville Equipment, Inc., Farmersville, Pa. John E. and Paul E. Martin, Auctioneers.

SAT. APR. 24 - 12 Noon. Located in Honesdale, PA. 11th Annual Wayne Co Calf Sale. Remsburg Sale Service. Sale Chairman Kevin Burligh, RD 1 Pleasant Mt., PA.

SAT. APR. 24 - Public Sale of Personal Property and Antiques. Located 506 W. King St., Lancaster.

Florence Ream Estate, Henry Merig, Ex. Randal Kline, Lloyd Kreider and Roy Good, Jr., Auctioneers.

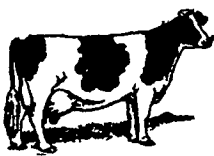
SAT. APR. 24 - 9 A.M. Public Sale of Farm Machinery, Tools, Antiques Collectibles, Household, Misc. and Guns. Located 4 mi. west of Pilew, PA, 6 mi. east off

Rt. 147, 4 mi. east of Malta. Violet A. Lenker, Owner. Dockey and Dockey, Auctioneers.

MON. APR. 26 - 2 P.M. Danville Livestock Market, cattle and hog auction. Located Old Route 11, Danville, PA. Melvin M. Lehman, owner.

IT'S MAGIC
How quickly
You Get Results
From Our
Classifieds!

PHONE
717-394-3047
or 717-626-1164



COMPLETE DISPERSAL SAT., MARCH 6, 1982 At 11:00 A.M.

In New Era, Pa., on the Wyalusing to New Albany Rd. 4 miles from New Albany, 8 from Wyalusing. (Next to Newton's Calf buying station.) Bradford Co.

102 HI-GRADE CATTLE

54 mature cows, 49 are Holsteins, 5 Ayrshires, 1 Jersey. 10 bred hrs. (9 Hol. & 1 Ayrshire), 6 big open hrs., 17 short yearlings and 15 started hrs. (all Hol. & NEBA sired by Trump, Noah, Ace, Tex, Creek etc.) Now sending 50 lbs. per cow, 16 to freshen in next 30 days, 10 were fresh Jan. & Feb., 24 are 1st & 2nd calf hrs. Cows in very good condition, and hrs. extra well grown. Vet checked & necessary shots & interstate charts.

MACHINERY

White 2-70 diesel with 3 speed manual transmission & 812 hours and wide front, JD "820" P/S, LPTO, live hydraulics & diesel, Farmall "M", tricycle. All real sharp tractors. Ford Semi-mounted 4 bottom trip plows, White 13 foot transport disc, IH #403 4 row air-planter, Ontario 17 hoe drill, Knight #250 hydraulic gate, double beater spreader, kicker box on Gehl wagon, Gehl #BU85 forage box on 8 ton NH wagon and flotation tires, NH forage box, IH #56 blower, Gehl #600 chopper, 2 row & pickup with hydraulic sharpener & spout, NH #279 haybine, NH #275 baler & thrower, NH #55 Rake, Grove gravity box & wagon, 2 Clay electric slage carts, Extra Good Set of Machinery.

Produce - Quantity corn & grass silage to be sold in 2 lots.

2 Barn Cleaners - both less than 1 1/2 years use. #1 Patz left hand with about 400 feet chain, #2 Badger right hand with about 320 feet chain.

From a Neighbor - JD #16A flail chopper.

Terms Cash or approved check same day.

-Lunch

Owner
ED CAMPBELL

Auctioneers
**Jim Adriance & Son - Montrose
717-278-1574**

NOTICE

Late listing for New Holland Sales Stables, Farm Equipment Sale March 12. Stoltzfus new semi liquid spreader AC 7' bar grass mower converted to horse Pittsburgh 480 16' wing disc, spring loaded NH 489 Haybine NI 8A Manure Spreader, good condition McD 2 way 16' steel bottom plow Myers Crimper IHC 7' mower w/engine and live hydraulic 790 NH Manure Spreader w/tail gate in good cond. 1968 C20 Chevy stake body, dual wheels and cattle racks NI 701 Uni System with flaking bed and 2 row wide corn head Hawk Bilt tank spreader JD 3 bottom plow

PUBLIC AUCTION



New Holland Sales Stables, Inc.

New Holland, Pa.



Tractor & Horse Drawn Farm Equipment Supplies-Small Items

FRIDAY, MARCH 12, 1982 10 A.M.
TRACTORS

- * John Deere 2340 Diesel 80 h.p. 300 hrs.
- * John Deere 2840 80 h.p. Diesel with Canopy and guard 750 hrs.
- * John Deere 2840 70 h.p. Diesel.
- * White 2-150 Diesel 150 h.p. with 1600 hours.
- * International Harvester, 544 Diesel with Hydrostat.
- * John Deere 3026 tricycle 70 h.p. Diesel.
- * John Deere 2010 50 h.p. tricycle, gas tractor with cultivators.
- * International Harvester TD-6 - 6 cyl. crawler tractor.
- * Farmall tractor with starter, lights, cultivators, scraper and vacuum lift.
- * Farmall "H" gas tractor on steel.
- * IHC 464 Dsl., 1800 hrs., 3 cylinder

HARVESTERS

- Hesston #7160 Forage Harvester w/7' pickup head and 30" 4 Row Corn Head
- IHC Harvester #425 baler w/PTO drive, twine tie, 14x18 baling
- * New Holland 1890 self-propelled with Cat engine 3208 and Hydrostatic transmission with 3 row adjustable 30" to 38" corn head.
- * Fox 2300 pull type 2 row with 38" corn head.
- Three-New Holland P.T.O. S717 Harvesters 540 P.T.O. with 2-row 38" corn head.
- * New Holland 718 1000 P.T.O. new knives with 770R 38" corn head.
- John Deere 38 Harvester feed table, new knives.
- New Holland 717 Harvester, with single row - row crop.

MOWER, CONDITIONERS AND MOWERS

- * John Deere 1380-12' Mower-conditioner, hydraulic pivot.
- * New Idea 299 9' mowditioner.
- * New Holland 1469-9' self-propelled haybine with Wisconsin engine and partial cab.
- New Holland 469-9' haybine
- Hesston 9' P.T. 10 mower conditioner.
- New Holland 477 - 7' haybine.
- New Holland 467 - 7' haybine.
- * New Holland 479 - 9' haybine.
- Bush Hog 14' Rotary Cutter.
- John Deere 25A 3 pt. 78" cut flail mower.
- New Idea 270 - 7' cutditioner.
- Triumph 5' side mount highway mower.
- International Harvester crimper.

BALERS

- * New Holland 845 Round baler.
- * Two New Holland 273 with engines
- John Deere 346 w/bale chute.
- John Deere 224 w/bale chute.
- John Deere 24T w/engine.
- John Deere 24T w/thrower.
- Massey-Ferguson 12 w/engine.
- New Holland 268 w/bale chute.
- John Deere 24T w/bale chute.
- John Deere 14T w/ejector.
- New Holland 68 baler.
- Ford 530 w/bale chute.
- John Deere wire-tie baler
- New Holland 271 w/thrower.

MATERIAL HANDLING

- * Owatonna 1700 Perkins Diesel skid loader.
- Vandale 210 mixing wagon with scales.
- New Holland 330 trencher.
- * John Deere 750 grunder mixer.
- * Stoltzfus TC085 fertilizer spreader, like new.

Sale of small items: 10:00 A.M., Large Equipment: 12:00 Noon, Tractors & Harvesters: 2:00 P.M., Draft & Driving Horse Sale: 7:00 P.M.

New customers and out of state buyers must have current bank letter of credit with guaranteed amount or cashier checks.

Buyers register at main office and secure buyer's number on day of sale.

Abe Diffenbach, Manager

For more information contact Abe Diffenbach or Norman Kolb.

TILLAGE

- Miller 22' 8" 3 section tandem disc w/tires, 22" plane blade and standard scrapers
- John Deere 5-bottom hydraulic reset plow.
- Mohawk 7 tooth 3 pt. chisel plow.
- John Deere Killifer disc.
- John Deere KBA original 24 disc.
- Dunham 8' cultipacker.
- Dunham 10' cultipacker.
- John Deere transport disc harrow.
- John Deere 9' KBA disc harrow.
- Brillion cultipacker.
- John Deere 9' spring tooth harrow.
- Brillion 9' sprocket packer.
- Ford 12' 3 pt. spring tooth harrow.
- 12' spring tooth harrow.
- John Deere 1010 3 pt. 10' field cultivator.
- MF 880 5Bx16 Plow, hydraulic reset
- MF 82 3Bx14 Plow

DRILLS AND PLANTERS

- * John Deere 7000 6-row 30" corn planter.
- Three John Deere 494A 4-row corn planters.
- John Deere 246 3 pt. 2-row corn planter.
- International 56 4-row corn planter.
- John Deere F.B. 15x7 disc drill.
- John Deere 999 corn planter.
- New Vicon 402 fertilizer spreader, with or without ground drive gear.
- John Deere 999 corn planter with plateless units.
- McD 2 row corn planter.
- IHC 400 4 row Corn Planter

MANURE SPREADERS

- New Holland 790 with pan.
- New Idea 213 single beater.
- New Holland 512 single beater.
- New Holland 510 3 beater.
- two New Holland 365 flail tank spreaders.
- John Deere 40 top beater spreader.
- John Deere 40 175 bushel with sloop pan.
- New Idea 10A manure spreader.
- McD manure spreader.
- Smuckers Built tank spreader.
- Two bale thrower wagons.
- Grove flat bed wagon with corn sides on steel running gears.
- Gruber wagon running gears.
- Hay wagon for bale thrower.
- New wagon beds.
- New Holland ensilage cutter with 50' or 6" pipe.
- Stauffer 2-row transplanter.
- McD P.T.O. Corn Binder with loader in good condition.
- 8' cultipacker-mulcher.
- McD riding cultivators.
- 1 row cultivator.
- 1 row scraper.
- single bottom plow.
- John Deere 8' ground driven grain binder.
- Bush Hog mower.
- Single seated rubber tired top buggy.
- spring wagon with roller bearings and new paint.
- Rubber tired and steel wheeled fore-trucks.
- 4 cye. IH motor with clutch.
- Van load of portable kerosene heaters.

Some items subject to prior sale. Items marked with asterisk will have financing available to qualified bidders with prior credit approval. Apply for approval at ABC Groff Inc., New Holland, Pa. 717-354-4731.

You may add your items to this list by calling 717-354-4341.