

Public Sales Register

**12th Annual Consignment Sale
2 DAY PUBLIC SALE**

Donald Scheese Farm
R.D. 3, Elmer, NJ 08318
609-455-3462

**FRI., MARCH 5 &
SAT. MARCH 6, 1982**
10:00 A.M. Sharp

All Tractors will be sold on Friday
TRACTORS

JD 4430 with cab, 4230 w/cab, 4520 w/cab, 4020 side console, 4020, 3020, 4010, A, and L. Ford 7000, 5000, Jubilee and 8N, IHC 1466 w/cab, 1066 w/cab, 706, 504, 574, (2) 140's w/cultivators, 130, Super M, and M, 300 high clearance 460, 656, and Cub w/mower. MF 285, 1080, 165. Steiger Bearcat w/10' snow plow and 3 pt. hitch. Long 550, MM 670, Oliver 88D.

COMBINES

JD 6600, 7700 hydrostatic, Case 660, MF 72.

TRUCKS

1971 GMC w/20' flatbed, 1970 Ford 800 w/new 18' dump, 3 1975 White Road boss w/318 Detroit, 38' grain trailer.

DISKS

12-14-16-18-20'

PLOWS

4-5-6 bottom semi-mounted

PLANTERS

4 and 6 row A.C. no-till, 4 row JD no-till.

CULTIVATORS

1-2-4-6-8 row.

IRRIGATION

Long traveler type irrigation system, AGGLE gun with reel 4-5-6" irrigation pipe.

MISC.

JD 700 grinder mixer, Gehl 115 grinder mixer, several sets of duals, 3 pt. hitch disk, plows, scrapers, front and wheel tractor weights, several parts tractors, 469 NH haybine and rotary mowers.

Many other tractors, trucks, and equipment arriving daily receiving equipment up to March 4, 1982.

Auctioneers:

Blaine Rentzel and Assoc.

**19th ANNUAL
SPRING SALE**

**Kempton Community Center
FRIDAY NIGHT, MARCH 19, 1982**
6:00 P.M.

Tractors and Farm Trucks (No Cars)
SATURDAY, MARCH 20, 1982
9:00 A.M.

Small Items (outside) and Farm Equipment

Receive tractors, Farm Equipment

Small Items (outside)

MARCH 13 to 18

8:00 A.M. to 4:00 P.M.

each day only

FRIDAY NIGHT, MARCH 26, 1982
5:30 P.M.

Household Goods & Antiques

SATURDAY, MARCH 27, 1982
9:30 A.M.

Household Goods, Antiques, Lawn & Garden Equipment, Yard Goods, Etc.

Receive Household Goods, Antiques,

Lawn & Garden Equipment

MARCH 23 to 25

4:00 P.M. to 8:00 P.M.

each day only

No Appliances, Junk will be refused

All goods on a commission basis

12 Auctioneers

Consign your items now.

Deadline for Advertising is Midnight
February 20, 1982

For Additional Information write:

KEMPTON SALE

Box 42

Kempton, PA 19529

or call (215) 756-6511, (215) 756-4279

or

(215) 298-2271. Sale weeks only (215) 756-6444

Sale Committee

PUBLIC SALE

Of Sheet Metal Shop Equipment

Discontinuing business and closing shop will sell, located - 11913 Maple Avenue, Rockville, Maryland 20852. (Off Washington Capital Beltway on Exit 34 - Route 355 North (Rockville Pike) to Randolph Road, turn right (east) 1 block right on Maple Avenue or off I-270 on Montrose Road West - Montrose becomes Randolph - 1 block on Randolph to Maple Avenue.

WEDNESDAY, MARCH 3

at 10:00 a.m.

Wysong 10 ft. 10 gauge power shear; Milwaukee 65 ton 10 ft. press break; (1978) Lockformer 1 in. 20 gauge 3 in. 1 combination, 1 in. bar slip and 1 in. reinforced drive cleat machine; Lockformer 24 gauge Pitts. and drive machine; Lockformer 22 gauge 3 in. 1 combination Pitts. and flat slip machine; Lockformer 20 gauge automatic guide lock power flanger; 20 gauge snap lock machine with male and female snap locks and drive cleat; Pexto 20 gauge spun in collar machine; Lockformer 18 gauge Pitts. and special C&P telephone connection machine; Lockformer 18 gauge power edger; Smith 30 in. power cleat edger with hydraulic lift table; Whitney Jensen automatic punch machine; Smith 18 and 30 in. cleat benders on floor stands; Lockformer 24 gauge cheek bender; Peer current control spot welder, 50 KVA; Lincoln AC-DC Idealair welder on dollie; Chicago 8 ft. 16 gauge hand break; Four ft. 18 gauge hand break; Duro Dyne electric pin spotter, (220 volts).

Keystone commercial compressor with 3 HP motor and 55 gal. air tank Devilbiss pressured glue tank, hoses and guns; insulation cutting table and grip nail steel table; metal insulation storage rack and holder; sheet metal shelving rack; sheet metal standing rack; metal hanging storage racks; 4 sections of various height scaffolding; crane lift metal cargo baskets; Pexto 3 ft. hand roll; Pexto 30 in. bar folder; Pexto table mounted hand crumpler; Pexto Beverly throatless shear; 4 in. 1 combination punch; B/D tec. screw guns; umshear, body grinder; vise, vise stand and bender; complete acetylene torch and cart; Milwaukee hand portable band saw; Hilti hammer drill guns; Whitney punches; 20 gauge hand button punch; bench grinder; electric hand drills; hand cleat edgers; gas fired soldering iron pot; metal and wooden shop tables and benches; Alnor air balance equipment velometer; Amp. probe; hand lacometer; good assorted wooden step ladders, 6 to 16 ft.; roller conveyors; Vermette 520 duck jack with extensions; 3 Vermette 512 duck jacks with extensions; 4 wheel rubber tire dollie; H-W 1 1/2 ton hydraulic floor jack gear tube; misc. damper hardware; misc. sheet metal; sheet metal and other hand tools; sheet metal screws; tec. screws; assorted Red Head bull dogs; 6 rolls duck liner.

1975 Ford F100 1/2 ton pickup truck, P.S., P.B., automatic, radio.

1973 Ford F350 ton dual wheel truck with 12 ft. stake body, 38,000 miles, 4-speed, P.S., P.B., extra clean.

Three metal gang boxes; Pipe rack for 8 ft. pickup; Aerol trailer mounted 85 gal. tar kettle; Rooting tar cart.

OFFICE EQUIPMENT AND SUPPLIES-

Lighted commercial size drafting tables; L-shaped receptionist desk; oak knee hole desk; secretary desk; executive and secretary chairs; Victor 2-drawer Firemaster file cabinet, other 2 and 4-drawer metal file cabinets; wooden blue print racks, shelving and bookcases; metal typewriter table; IBM electric typewriter; APF Mark 300 electric printing calculator; Victor electric automatic calculator-adding machine; 3M 149 copier; 3M casual desk copiers; blue print taping edger; Dayton 24 in. electric floor fan; Westinghouse and Kelvinator refrigerators; Destroilet gas operated electric toilet, like new; office supplies and other useful articles.

Sale Order: Office equipment, small tools, equipment, trucks.

INSPECTION MONDAY, MARCH 1 AND TUESDAY, MARCH 2 FROM 9:00 A.M., to 3:00 P.M., OR SALE DAY AFTER 8:00 A.M.

TERMS: Cash or approved company check with bank letter.

SHEET METAL UNLIMITED, INC.

Telephone: (301) 770-2664

Auctioneer: Robert C. Mullendore
Boonsboro, Maryland
Telephone: 582-0546

Sale to be held inside heating building
Lunch available on site.

SAT. MAR. 20 - 10 A.M. Public Auction of Horses and Mules and Farm Equipment located 5 miles south of Quarryville, 1 mile southwest of Black Rock Camp Ground from Rt. 472 along Puseyville Road, 9 miles north of Oxford, 2 miles North of Kirkwood, Colerain Twp., Lancaster County, Pa. Sale by Levi Z. Fisher, Owner; Dittenbachs, Auctioneers.

SAT. MAR. 20 - Harry Becker farming equipment, located midway between Manheim and Landisville at The Lancaster Junction

SAT. MAR. 20 - 9:30 A.M. Public Sale of Farm, Antiques, Household Goods and Farm Equipment. Located at 708 Lincoln Rd. (1/2 mi. east of Brunnerville towards Lincoln) Warwick Twp., PA. N. Eugene and Anna Mary Kofroth, Owners. Glenn Horst, Auctioneer.

SAT. MAR. 20 - 9:30 A.M. Public Sale of Tools, Equipment, Antiques and Household Goods. Located in Cumberland County, Mt. Holly Springs John P. McCoy Estate. King's Auction Service.

SAT. MAR. 20 - 9 A.M. Public Sale of Farm, Mountain Land, Farm Machinery, Tools, Wagon Lots, Car, Garden Tractor, Butchering Equip., Antique Furniture, Collectibles, Dishes, Household Goods and Guns Located approx. 6 mi east of Millersburg or 4 mi west of Berrysburg along Rt. 25, next to Reigles Church, Mifflin Twp., Dauphin Co., 30 mi. northeast of Harrisburg Estate of Mark A. Hoover Mark and Dave Deibler, Auctioneers.

SAT. MAR. 20 - 10 A.M. Public Sale of Real Estate, Household Goods, Antiques and Car Located 2 1/2 mi. south of New Holland, 3 mi. north of Intercourse, turn off Rt. 23 in New Holland on South Custer Ave., 2 1/2 mi. to Summitville Rd., Earl Twp., Lancaster Co., PA. Ivan H. Sr. and Florence V. Stone, Owner. Robert E. and Jeffrey R. Martin, Auctioneers.

SAT. MAR. 20 - 10 A.M. Public Sale of Farm Equipment Located at Rockingham County Fairgrounds, U.S. 11 South of Harrisonburg, VA, take Exit 61-62 off I-81. Rockingham County Fair Association. Larry Garber, Auctioneer.

SAT. MAR. 20 - 10:30 A.M. Public Sale of Farm Equipment Located in Village, VA near Callao East of Tappahannock William E. Sanford, Jr. Ownby Auction and Realty Co., Inc

SAT. MAR. 20 - 10 A.M. Public Sale of Tractors, Farm Machinery, Lawn and Garden Equipment Located at Jersey Shore, PA, Lycoming Co. Thomas L. Dunlap. Fraley Auction Co

MON. MAR. 22 - 2 P.M. Danville Livestock Market, cattle and hog auction Located Old Route 11, Danville, PA Melvin M. Lehman, owner

MON. MARCH 22 - Annual Consignment Auction of Farm Equipment by M.M. Weaver & Sons, Inc. N Groffdale Road, Leola, Pa John E. and Paul E. Martin, Auctioneers.

TUES. MAR. 23 - 10 A.M. Public Sale of Cattle and Farm Machinery Located in Carlisle, Cumberland County, PA Kruger Dairy Farm, Owners Kling's Auction Service

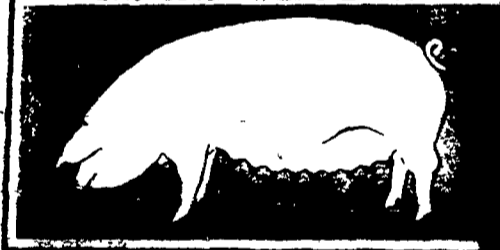
TUES. MARCH 23 - 9:30 A.M. Annual consignment auction at Geo V Seiple & Son Dealership, RD 2, Easton, Pa Ralph W Zettlemoyer Auction Co., Auctioneers

Landrace Production Sale

Thursday, March 18, 1982 - 7:00 p.m.

LANDRACE

"The Great White Breed"



Lake's Landrace

Grandview Farms

Selling 125 Head

25 Boars - 15 performance tested by Fulton County Extension Agent.

60 Bred Gilts - Serviced by: MF O Vinter 8-1 - Ohio (tested on farm) Boar; DPMc O Break Thru 122-11 - 3rd Place Boar at '81 Summer Conference; MF 1 Colossus 4-7 - Littermate to 1981 Hog College Boar, Approximately 25 head will be bred to Hamp & York Boars.

40 Open Gilts - Commercial and Registered

Offering Sired by: CR8 Dunderbo 84-2 - A son of the \$4,300 top selling boar at the 1978 Summer Conference; LRN 79 Bigfoot 28-5 - Reserve Champion Boar at the 1980 Southeast Type Conference, Sired 3rd high, Indexing Pen at Pa. Boar Test; 4-Star Roots 7-11 - Free moving, sound boar; MJK O Step Ahead 1-1 - Premier Sire at the 1981 Summer Type Conference.

Brucellosis free and Pseudorabies neg. - Blood test - Health charts sale day. Out of state bring your permit number.

Auctioneer - Col. Bill Zobel

Landrace - Don Verhoff

Sale to be held at the Donald Lake Farm, 9 miles south of McConnellsburg on Route 522.

For Catalog or more information contact:

DONALD LAKE

Star Route 2 - Box 122
Big Cove Tannery, Pa. 17212
Phone 717-573-2823 (night)
717-485-3135 (day)

DAVID KORNS

Wellersburg, Pa. 15564
Phone 814-324-4596