

## Public Sales Register

Closing Date - Monday, 5:00 P.M.  
of each week's publication

SAT. MARCH 20 - 6:30 P.M. Danville Livestock Market, horse sale located Old Route 11, Danville, PA. Melvin M. Lehman, owner.

SAT. MARCH 20 - Public Sale of Farm Equipment. Located near Victor, NY. Saxby Imp. Co. Annual Sale. Ralph W. Horst and Blaine Rentzel, Auctioneers.

SAT. MARCH 20 - 10 A.M. Public Sale of Modern Farm Equipment. Located off Rt. 283 at the Salunga Exit, go south on Prospect Rd. to Eby Chiques Rd., RD 3, Mt. Joy, Pa. For Minnie V. Gantz, C.H. Wolgemuth, Auctioneer.

SAT. MAR. 20 - 10 A.M. Public Sale of Real Estate, Household Goods and Antiques. Located in the Village of Cambridge. Lana Mussar, Owner. Steve Petersheim, Auctioneer.

SAT. MARCH 20 - 11 A.M. Public Sale of Trucks, Farm Machinery and Potato Handling Equipment. Located approx. 6 mi. south of Red Lion, PA off Rt. 74 turning at the Formerly known Leiphart's Auction Room onto Jacobs Rd. and proceed 1/4 mi. to sale. Ray E. Bacon, Owner. Robert L. Sechrist, Auctioneer.

SAT. MARCH 20 - Public Sale of Farm Machinery and Trucks. Located 6 mi. east of McAlisterville, Juniata Co. Mrs. Joseph "Judy" Elsasser, Owner. Long Bros., Auctioneers.

SAT. MARCH 20 - 9 A.M. Public Sale of Farm Equipment. Located at the Kempton Community Center. 12 Auctioneers. For information call 215-756-6511.

SAT. MAR. 20 - 10 A.M. Public Sale of Farm Equipment. Located at 1841 Pine Hall Dr., State College, PA. Markles Farm Equipment, Owners. Ron J. Gilligan, Auctioneer.

SAT. MAR. 20 - 10 A.M. Public Sale of Tractors, Nursery Equipment and Machinery. Located taking U.S. Rt. 30, 5 mi. west of Gettysburg, PA (Gettysburg Nursery.) Robert L. Griggs, Owner. C. David Redding, Auctioneer.

SAT. MAR. 20 - 9:30 A.M. Public Sale of Driving and Work Horse and Tack. Located at the Jersey Shore Livestock Barn, Jersey Shore, PA.

SAT. MAR. 20 - 10 A.M. Public Sale of Equipment, Tools, Household and Boat. Located RD 2, Catawissa, PA, off Rt. 42 south of Bloomsburg, Pass Abraczinskas Farm Equipment. Mr. and Mrs. E. Saneholtz, Owner. John and John Jr. Autotore, Auctioneers.

SAT. MAR. 20 - 11 A.M. Public Sale of Farm Equipment. Located on the Ray Hauger Farm between Somerset and Garrett along the Plank Rd. 4 mi. north of Garrett along the Plank Rd. 4 mi. north of Garrett or 5 mi. off Rt. 219 south of Somerset. Mr. and Mrs. Ray Hauger, Owners. Luce and Stahl, Auct.

SAT. MAR. 20 - 11 A.M. Public Sale of Farm and Personal Property. Located between Rt. 125 Pitman Area and Rt. 225 at Red Cross about 2 mi. west of Pitman and 1/4 mi. west off Rt. 125, 7 mi. north of Hegins and 7 mi. south of Shamokin, Eldred Twp., Schuylkill Co., PA. Glenn C. Masser, Owner. George and Mike Deibert, Auctioneers.

SAT. MAR. 20 - 11 A.M. Public Sale of Farm Equipment. Located in Powells Valley, Halifax, RD 2, Dauphin Co., PA. Approx. 21 mi. northeast of Harrisburg on Rts. 225 and 147. 5 mi. east on the Powells Valley Rd and 1 mile south of Sheetz Rd. to Mountain Rd. George Snyder, Owner. Ed Shoop, Auctioneer.



## 2nd Annual Driving and Draft Horse Sale

**SATURDAY, MARCH 6**

At Jersey Shore Livestock Barn, 2 miles east of Jersey Shore on Rt. 44.

Selling tack at 9:00 A.M.  
Horses at 11:00 A.M.

New tack and Standard Bred driving horses, consigned by Max Buck.

One load Standard Bred driving horses, consigned by Joseph Brubaker.

One load Draft horses, consigned by Lynn Wagner.

One load of Draft horses, consigned by John Dilling.

One load of Standard Bred and Saddle Bred Driving Horses, consigned by Lynn Bowes.

Plus many more consignments.

For more information, contact:

Jersey Shore Livestock, Jersey Shore, PA 717-398-0111

Lynn Bowes, Jersey Shore, PA 717-398-2194

## PUBLIC SALE

LIKE NEW FARM MACHINERY & TOOLS OF THE LATE WILLIAM C. MANIFOLD

**SAT., MARCH 27, 1982**

at 11:30 A.M.

Located about 15 miles south of Red Lion or approx. 1 mile north of the Norman Wood Bridge Rd. (Rt. 372). Farm directly across from the Lower Chancelord School on Rt. 74 in York Co., PA.

Int. Farmall 766 diesel tractor w/year round cab, 16.9x38 tires, WFE, fully equipped & like new w/only 1290 hrs; Int. Farmall 544 diesel tractor, TFE, fast hitch attachment, fully equipped, very nice only 2700 hrs; Int. #5100 16 disc grain drill, used 1 season; Int. #234 2 row mounted corn picker w/husking bed; Int. corn sheller attach. for #234 picker (sheller will be offered separately); Int. #55-9 ft. high clearance 3 gang chisel plow w/depth wheels; Int. 3-16" mounted plow w/fast hitch; N.H. #315 Hayliner baler w/bale thrower, like new; N.H. #1469 self propelled haybine; N.H. #258 rollbar rake, used 1 season; N.I. #218 tandem wheel PTO manure spreader; N.I. 2 ton fertilizer spinner spreader; J.D. #7000-4 row corn planter w/hyd. row markers, insecticide & herbicide boxes, like new, used 2 yrs.; 2-18 ft. bale wagons w/8 ton Central Tractor wide track running gears; Killbros 200 bin on a new 8 ton Central tractor chassis; several other flat bed wagons; A.C. wagon w/McCurdy bin; Int. 1300 balance head 7 ft. mower, 3 pt. hitch; N.H. wagon w/bin; Danuser 3 pt. hook post hole digger w/15" auger; Gehl hi-throw 56" hopper blower; 9" silo pipe; Farmec N.H. 24 ft. elevator; Little Giant 36 ft. elevator; N.H. 20 ft. bale elevator; drag elevator; N.I. flail chopper w/chute & new hammers; Century 8 row sprayer w/fiberglass tank; J.D. 5-16" bottom semi-mount plow; Brillion 14 ft. transport spring tooth harrow; Pittsburg 12 ft. disc on rubber; 12 ft. Brillion cultipacker; Int. 8 ft. H.D. cutaway disc on rubber; 9 ft. cultipacker; Int. 12 ft. tractor harrow; PTO tractor clover seeder; used 15.5x38 tractor tire; Agway LPS feeder; Gehl direct cut forage head for 83 or 84 chopper; Surge Alamo vacuum pump #40 + 2 HP motor; Rheems 82 gal. electric hot water heater; and other items

Please Note: There will not be the usual amount of small items in this sale. We will be selling large machinery from the beginning. Please be on time. 11:30 A.M. Sharp.

Terms: cash or approved check

Owner,  
**LOIS A. MANIFOLD**  
R.D. 2  
Airville, Pa.  
Ph. 717-862-3826

Auctioneer  
Robert L. Sechrist  
Fawn Grove, Pa.  
Ph. 382-4379  
Clerks,  
Anderson & Warner

Not responsible for accidents  
Refreshments by McKendree Church

## HARRY RUDNICK & SONS, INC.

LIVESTOCK SALES EVERY TUESDAY  
GALENA, MARYLAND Phone: 301 648-5601

### MONTHLY DAIRY SALE

**TUESDAY, MARCH 2**  
at 7 P.M.

FEATURING: 22 Artificially Sired Holstein Cows & Heifers...there are 13 Cows, some fresh, and in full flow of milk, 3 bred & close springing Heifers and 6 open Heifers of various sizes.

CONSIGNED BY:  
**EDGAR DAVIS**

of Earleville, Md.

Plus other consignments consisting of bred & open heifers, fresh cows and stock bulls.  
**JOE RUDNICK, Auctioneer**

## PUBLIC AUCTION

FARM MACHINERY, TRACTORS,  
2 SILOS AND CROPS  
**MON., MARCH 15, 1982**  
11:30 A.M.

Located east of intersection of Rts. 100 & 401 on Birchrunville Road, Vincent Twp., Ludwigs Corner, Chester Co., Pa.

Oliver 1855 diesel, Oliver 1655 diesel, Oliver 550 gas, 1530 Case skid loader. Full line of farm machinery.

Full listing later.

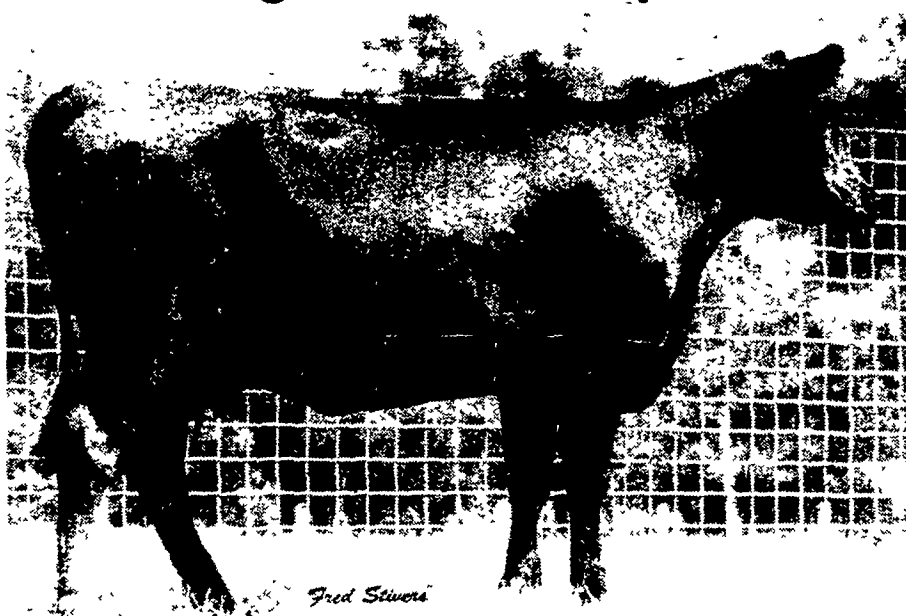
Sale by order of

**JOHN & MARY BRUNER**

Conducted by  
Whitford Sales Co.

L. Robt. Frame, auctioneer  
Box 100 Uwchland P.O. Eagle, Pa. 19480  
215-458-5060

## An Exciting New Sale With Super Cattle!



**"PENNSYLVANIA ANGUS ON PARADE"**  
**FRIDAY, MARCH 12, 1982**

**6:30 P.M.**

Farm Show Building Harrisburg, PA

**SELLING: 80 LOTS**

• 10 Serviceable Age Bulls • 70 Females, many with calves at side

Selected Consignments From These Reputation Herds:

Berrypatch Farms, Elverson, PA  
Brandywine Valley Angus, Parkersburg, PA  
Buffalo Valley Angus, Seven Valleys, PA  
Burnt Mill Veterinary Center, Shippensburg, PA  
Devereux-Soleil Farms, Downingtown, PA  
Eberly Angus, Elizabethtown, PA  
Eden Croft Farm, Tyrone, PA  
Erdenheim Farm, Lafayette Hill, PA  
Error Hill Farms, Friedens, PA  
Green Pastures, Green Park, PA  
Donna J. Hughes, Portage, PA  
Heartland Farm, Glen Gardner, NJ  
Huntingdon Farm, Alexandria, PA  
The Johnson Farm, Newmanstown, PA  
Koolspring Farm, Mercer, PA  
The Krause Family, Slatington, PA  
Laird Angus, Dover, PA  
Licking Creek Farm, Mifflintown, PA

Carl P. McCullough, Mercer, PA  
McKean Bros., Mercer, PA  
Mountain View Angus Farms, Harrisburg, PA  
Penn State Univ., Univ. Park, PA  
Pleasant Valley Farm, Lebanon, PA  
Prospect Hill Farm, New Wilmington, PA  
Rains Angus, Mercer, PA  
Rishels Edlyn Farm, Glen Rock, PA  
Seldom Seen Farm, Freedom, PA  
Seventeen Twenty-Six Farm, Lebanon, NJ  
Shives Angus Farm, Seven Valleys, PA  
South Branch Farms, York, PA  
Stivers Angus, Pittstown, NJ  
Stonylonesome Farm, Staehelstown, PA  
Twin Oak Farms, Quarryville, PA  
Valle del Sol Farm, Portersville, PA  
Dr. J. M. Wiesenbaugh, Hagerstown, MD

**10 BULLS** Big, Rugged individuals, many with outstanding show and performance records

A GREAT PLACE TO BUY JUNIOR HERD BULL PROSPECTS

**70 FEMALES**, Power packed individuals with in-depth pedigrees. Sired by or with calves at side by the leading A.I. Performance and show ring winning sires in America today.

THE CATTLE HAVE BEEN ESPECIALLY SELECTED FOR THIS SALE BY AN INSPECTION COMMITTEE. ATTEND, EXPECTING TO FIND A SPLENDID OFFERING.

**ATTENTION: JUNIOR MEMBERS!!**  
**MANY OUTSTANDING SHOW PROSPECTS FOR 1982**

Auctioneers:  
Col. Mike Jones, LaGrange, Georgia  
Col. Harry H. Bachman, Annville, PA

For Your Free Reference Catalog, Address:  
TOM BURKE/BERNIE SCHEER  
Sale Managers  
AMERICAN ANGUS HALL OF FAME  
Smithville, Missouri 64089  
816/532-0811

Sale Sponsored By The:

**PENNSYLVANIA ANGUS ASSOCIATION**

Fred Frey  
President

William Holloway  
Vice President

Patty Salezze  
Secretary-Treasurer