

# New Farm Women president serves "For Happiness"

BY BETH HEMMINGER  
Staff Correspondent

SHIPPENSBURG — Marie Baughman, the newly-elected president of the Society of Farm Women believes in the organization's 68-year-old motto, "For Happiness."

She said, "That is what the organization was founded upon and now in 1982 as president of the organization of over 4,000 members I plan to stand by that motto and continue to make it an organization of happiness."

Marie said that was one of the reasons she joined the organization some 20 odd years ago, because she knew so many farm women who found joy, fellowship and happiness in the farm group.

Marie has been a Franklin County farm woman member for over 20 years, but she didn't become a member until after she left the dairy farm. She stated, "While we lived on the farm, the chores were endless and I felt I didn't have the time to devote to the organization."

After Marie and her husband, Merle, and their four children left the farm, she knew she would have ample time to be a part of the group. She said, "I didn't want to lose touch with the farming world because it had been my life ever since I was a child, being raised on a dairy farm and then marrying a dairy farmer." Becoming a member of the Farm Women's Society was one way she said she could keep in touch with the world she knew best - farming.

After settling in their home of the main farm, Marie took little time in joining the society in Franklin County, Group 7.

"After that first meeting, the Society of Farm Women became a major part of my life," she stated.

It didn't take Marie long to become an intricate member in the society and she rapidly began climbing the ladder of leadership rungs in the organization. Marie has been the Charter President of Group 7, Franklin County treasurer and county president; and in the state circle she has served as treasurer, second state vice president and first state vice president, and is now serving a three-year term as president.

Because Marie has made the Society of Farm Women a major part of her life, she has felt it necessary to learn the history or basis for the organization of the group those 68 years ago.

She said, "Flora Black, as all members know, was the founder of the Society in 1914. Mrs. Black began the Farm Women group with 20 charter members in her county of Somerset. The group met in the homes of the members one day a week to exchange new ideas for the homes — new sewing techniques, new recipes or even when a new shipment of fabric that had arrived at the general store."

Marie added that the Farm Women group was also known for its work in education, discussing and working towards better ways to educate their children and other children in the rural community. And too, the women worked towards improving farming conditions and easing the load for their husbands.

"In those days," Marie noted, "farming had little conveniences — it was hard work."

"Flora Black was a

revolutionary thinker for her time, when women rarely spoke or thought in public or in groups. But she had a grand idea that caught on then and now as one can see by the growth of the organization from 20 to 4,000 members," said the President.

However, everything changes with the passing of time, said Marie, and the Society of Farm Women of Pennsylvania has also changed. She said that the groups discuss pertinent topics in farming, work on a variety of projects, and accept not only women living on a farm, but women with a farming background who are interested in the agriculture community. But she said the main purpose of the group over the years has stayed the same as stated in the constitution: "It shall be the purpose of this organization in all of its activities, to contribute to the power and influence of the farm home; to contribute to the community activity of farm women; to develop leadership and to promote better living and working conditions in the farm homes of Pennsylvania."

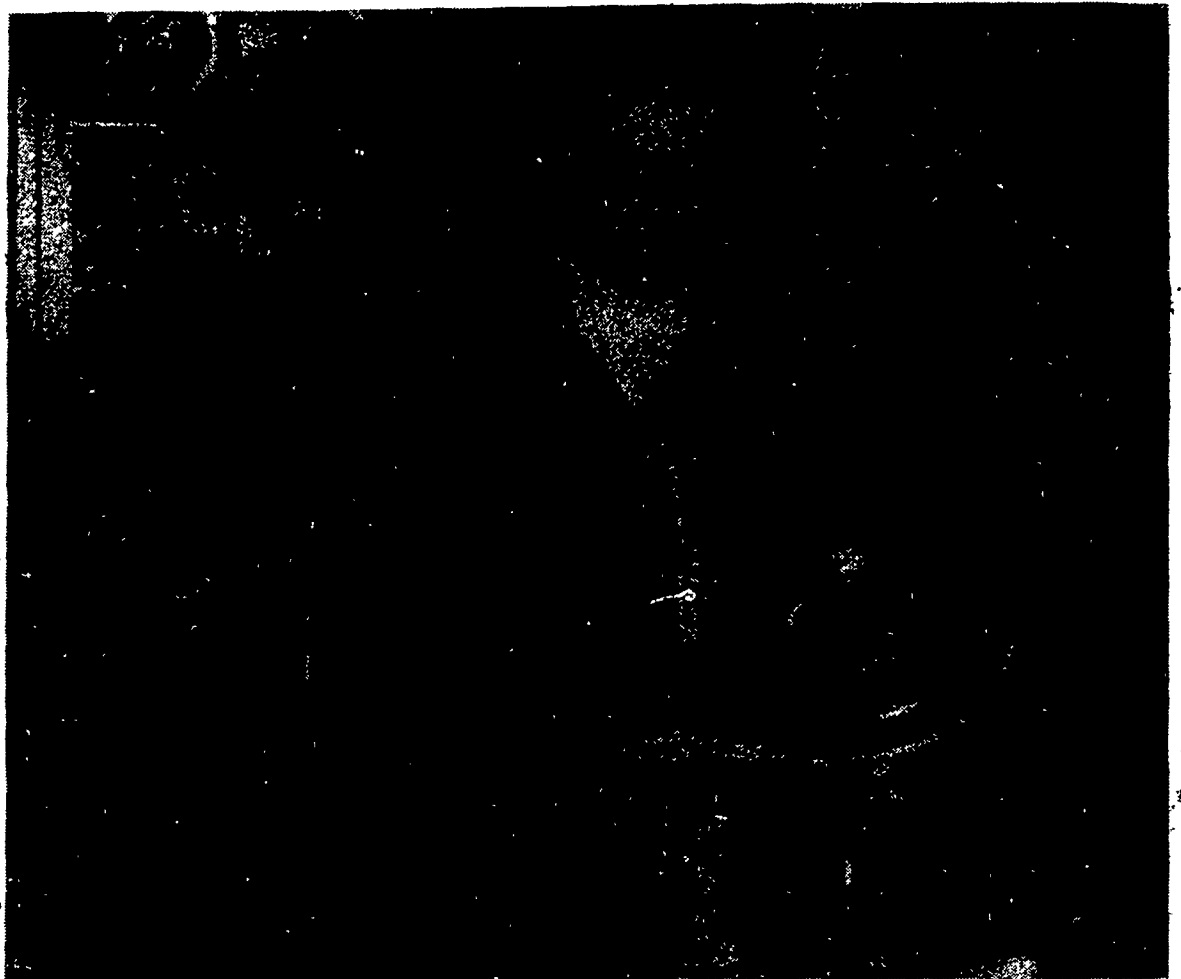
As the 18th President of the Society, Mrs. Baughman sees some additions she would like to make in the organization during her term.

Her first concern is membership. She stated that even though there are a total of 4,015 members across the state, she feels there are more women out there who have a farming background, but just need to be asked to join. She remarked, "I plan to encourage all the members to tell the women in Pennsylvania about the Society and encourage those interested in agriculture to join the ranks of a fine organization."

Secondly, she is concerned that there is no memorial for those who have served the Society for many, many years. Marie stated, "I would like to see a memorial book added to the group's collection of momentos and traditions, where we can honor those who have served."

"The first term in office will be busy for me," remarked the new president. "Being president of a large organization like Farm Women, you are on call at all times — it is a full-time job."

Her first major responsibility in her new post will be the Executive Board meeting with all of the county presidents and state officers. Then several weeks later, the biggest single gathering of the



Marie Baughman, President of the Society of Farm Women is proud of her many Farm Women momentos, like this sterling silver plate embossed with the Society's emblem, the hollyhock surrounded by a rural scene.

## Homestead Notes

farm women will take place: the Shippensburg Fair every year. Spring Rally. We make thousands and

Marie remarked, "These two events will keep me very busy for the next few months. And, along with the major events, there are always the meetings to schedule or a committee to organize and my local group to help."

Marie added, "Just because I hold a state office, I am not going to abandon my local group. I have too much fun in it!"

She said that she enjoys the speakers, craft days, historical tours and the French Fry committee of the local group.

She explained that the French Fry Committee of Group 7 operates a food stand at the

thousands of french fries all week long, and the group has a great time. It is an event I look forward to every year."

"Among all the committees, meetings and French Fry committees," said Marie the most cherished moments by all the members is the host of friends and fellowship everyone enjoys and shares in the Society."

"It seems like I have talked little about myself and mainly about the organization that I am a part, but the Society of Farm Women is me, it is my career and I couldn't think of a better occupation or a better way to spend a day or a lifetime!"



### Lancaster Co. Society 2

Lancaster Society 2 held their January meeting at the home of Edna Loose of Penryn.

Twenty-one members answered roll call by donating a get well and sympathy card stamped and ready for mailing.

Ruth Waltz was initiated as new treasurer, replacing Elizabeth

Shenk.

Opal Ruhl, 1981 county president was guest speaker for the evening.

Ruhl was born on a cotton farm in South Carolina and gave each member seeds to grow for fun.

The next meeting will be held February 13 at the home of Esther Farrell of Manheim.

### Lancaster Co. Society 11

Lancaster Society 11 met January 28 at the home of Grace Ann Chase.

Roll call was answered by 10 members telling a resolution they intend to keep this year.

For the evening's entertainment,

Helen Shaub conducted a general information quiz and a spelling bee.

The February meeting will be held February 25 at the home of Esther Wood.



"Farm Women have always enjoyed crafts and handiwork," said Marie Baughman as she shows a footstool made by a Franklin County group who presented it to her when she held the office of county president. The footstool is appliqued with the Society of Farm Women emblem.