

**Public Sales Register**

Closing Date - Monday, 5:00 P.M.  
of each week's publication

WED. MARCH 24 - Public Sale of Farm Machinery and Livestock. Located 2 mi. east of New Berlin, Snyder Co. Mr. and Mrs. Lewis Maurer, Owners. Wayne Hess, Auctioneer.

THURS. and FRI MARCH 25 and 26 - Farm Equipment Sale at Horsts Machinery Lot, located one mile east of Marion, PA. off Rt. 81. Sale Manager, Ralph W. Horst, Marion, PA 17235.

THURS. MAR. 25 - 11 A.M. Public Sale of Cattle. Located in Myerstown, PA. Hubert S. Miller Estate, Lime Rock Farms, R. Austin Backus Inc and P. Holstein Assn.

THURS. MAR. 25 - 11 A.M. Public Sale of Farm

Machinery, Tractors, Trucks, Small Items and Etc. Located on farm 17 mi. south of Williamsport, ½ mi. south of Muncy, PA Lyc. Co. Bastian Bros, Owners. Fraley Auction Co. 546-6907.

FRI. MARCH 26 - 5.30 P.M. Public Sale of Household Goods and Antiques. Located at the Kempton Community Center. For information call 215-756-6511

FRI. MAR. 26 - 7 P.M. Public Consignment Dairy, Cow and Heifer Sale. Located at the Penns Valley Livestock Auction, Centre Hall, PA. Ron Gilligan, Auctioneer

FRI. MAR. 26 - 12 Noon. Public Sale of Bulls. Located at PA Depart-

ment of Agriculture's Meat Animal Evaluation Center, 651 Fox Hollow Rd., State College, PA 814-238-2527

SAT. MARCH 27 - Steve Gallant Potato Farms Complete Dispersal, Sweden Township, Potter Co., PA. Sale by Pirrung's, Wayland, NY or Ulysses, PA 716-728-2920

SAT. MARCH 27 - Auction of 32 acre Farm and All Equipment and Personal Property along Orchard Rd in Brecknock Twp., Lancaster County. Terms by Silas and Alice Good, Randal Kline, Lloyd Kreider and Roy Good, Auctioneers.

SAT. MAR. 27 - 11 A.M. Consignment Horse Sale at the Keister's Middleburg Auction Sales, Inc. Rt. 522, 3 miles East of Middleburg, 5 miles West of Selinsgrove, Pa. Don & Walt Keister, Owners, Ray Long & Dave Imes Auctioneers.

SAT. MAR. 27 - 10:30 A.M. Public Sale of Farm Machinery and Straw. Located on Maxwell Dr., 5 mi. South of Quarryville, Gordon and Lorraine Herr, Owners. Kreider and Petersheim, Auctioneer.

SAT. MARCH 27 - Public Sale of Irrigation Equipment and Farm Machinery. Located 9 mi. south of Millintown, Juniata Co. Mr. and Mrs.

Jim Yeingst, Owners Long Bros., Auctioneers.

SAT. MARCH 27 - 11.30 A.M. Public Sale of New Farm Machinery and Tools. Located about 15 mi. south of Red Lion or approx. 1 mi. north of the Norman Wood Bridge Rd. (Rt. 372), farm directly across from the Lower Chancelord school on Rt. 74 in York Co., PA. Lois A. Manifold, Owner. Robert Sechrist, Auctioneer.

**M.M. WEAVER & SONS INC.**

**ANNUAL CONSIGNMENT AUCTION OF FARM EQUIPMENT**

**MON., MAR. 22, 1982**

Located: North Groffdale Road, Leola, PA

ATTENTION: Anyone having farm equipment to consign to our Annual Spring Auction and would like to have it advertised, please call us by Saturday, March 6, 1982 at 717-656-2321.

Auction By  
**M.M. WEAVER & SONS, Inc.**

Auction conducted by  
John E. and Paul E. Martin  
Auctioneers  
717-733-3511 or 717-733-3305

**PUBLIC SALE SATURDAY, FEBRUARY 20, 1982 10:00 A.M.**

**FARM EQUIPMENT - CORN HOUSEHOLD GOODS SOME ANTIQUES**

Located 5 miles southeast of New Holland, 3 miles east of Intercourse, 1 mile north of Route 340, along Red Well Road. Leacock Twp., Lancaster Co., Penna. From New Holland take (Brimmer Ave.) the New Holland Road south 3½ miles to Peters Road, turn left, then first right at Red Well Road, first farm on left. Near Pequea Mennonite Church.

**FARM EQUIPMENT**

John Deere 3010 Diesel, very nice condition; Ford 981 Select-O-Speed tractor with front and rear wheelweights; Ford Jubilee tractor; Farmall "H" tractor;

New Holland #67 baler with thrower; New Holland #479 Haybine in good condition; Ford 2-row corn picker; McKee Snowblower with two augers;

John Deere #494 4-row corn planter with fertilizer and insecticide boxes; John Deere #246 3-point hook-up 2-row corn planter with fertilizer and insecticide boxes; John Deere 13 disc grain drill;

New Holland #328 manure spreader; Starline tank manure spreader; New Holland #58 hay rake; New Holland #450 3-point 7' grass mower; Pequea P.T.O. hay tedder;

Century 8-row field sprayer; Three hay wagons with high sides, one has an N.H. running gear; two corn bin wagons; New Holland 24' corn and bale elevator; 20' bale elevator; Sauder "D" manure loader;

John Deere 3-bottom 16" plow; Dunham 10' transport cultimulcher; John Deere 4-section spring harrow; 9' cultipacker; Case disc harrow; Lely 3-point lime and fertilizer spreader;

Case stalk shredder; 3-point buck cord saw; 15 K-W PTO generator, like new condition; 8-ton and 4-ton metal feed bins; McD potatoe digger; two round feeders for hay and ensilage; four feed troughs;

275 gallon gas tank on High stand with meter; three 275 gallon fuel tanks; pony cart; 2300 tobacco lath; Minnich tobacco press; Lumber; rail fencing and posts; Two wagon loads of misc. items; Dehorner; two sump pumps; two Hyd. jacks; Handyman jack; P.T.O. Piston pump; tractor chains; tire chains; implement and tractor tires; V-belts; wagon unloading unit; plastic pipe; small air compressor; come-a-long; grinder; motors; grease guns; Transmission oil; two pipe vises; P.T.O. shaft; clover seed sower; wooden boxes; oil burning unit;

Welding table with vise; bolts and nuts; paint sprayer; Delavel milker parts; three metal troughs; wheelbarrow; Ford wheels and rims; oil drums; forks; shovels; hand tools;

1970 Black Chevelle, two door, easy on gas.

DAIRYING EQUIPMENT—Girton "D2" 400 gallon bulk milk tank, in very good condition; Compressor with heater; Sputnick milk transporter with compressor in very good condition; Starline ensilage unloader with 2 h.p. motor for 10' silo; Surge 75 plus Vacuum pump, Good; Four Bodman NuPulse Milking units; double stainless steel wash tubs; two stainless steel strainers; Two Bender teat cup washers; stainless steel wash basin; drain table; Norge 30 gallon fast recovery glass lined water heater; mix faucets; 75 cow dairy breeding system; 36" barn fan with thermostat; two small barn fans; two Stewart clippers; four electric fencers;

3200 bushel ear corn. Hay by the ton.

HOUSEHOLD GOODS—Three piece bedroom suite with bookcase headboard; G-E Harvest Gold large size refrigerator, like new; two oil space heaters; apartment size gas stove; Three desks, one large, two small; wooden wardrobe;

Maytag automatic washer; baby crib with new mattress; Vibrator mattress; spring; waterfall bed; wooden bed; cot bed;

Vanity; two cupboards with four drawers; large clothe rack; three upholstered chairs; wooden chairs;

Two end tables with three drawers; stand; rugs; chime clock; pictures; crocks; two quart canning jars and freezer boxes; dishes; some kitchen items; pressure cooker for canning; toy boxes; metal shower; etc.

SOME ANTIQUES—Copper kettle with stirrer; Iron furnace with kettle; wooden wheelbarrow; hand straw cutter; hog scraper; meat saw; spreader; large dipper; two milk can stirrers; Cast iron claw foot bath tub; etc.

Sale at 10:00 A.M.

Sale Order 10:00 - Small items at Barn followed by household goods then farm equipment.

**ENOS N. & MABEL W. WEAVER**  
Owners

Diffenbach's Auctioneers

**PUBLIC AUCTION**

Having made major changes in our farming operations, we will sell the following equipment at the farm located 2 mi. East of Frederick, Md. (From I-70 take exit #55, at the stop sign, turn left, proceed past Livestock Auction on Reichs Ford Rd. continue 1 3/4 mi. to farm lane on right, immediately after crossing the Monocacy River Bridge - Watch for sale signs) on

**MONDAY, FEB. 15, 1982**

(Blizzard date Sat. Feb. 20, 1982)

Beginning 10:00 a.m.

FARM MACHINERY: Deutz 6808 70 hp Tractor, Farmall "M", Farmall "H", Case "Vac" w/3 pt. hitch/cultivators, J.D. 80 40 hp Tractor (Tractors are in excellent mech., condition & sharp appearance) N.H. Super 717 Chopper w/one row, two row and pick up heads; 2 J.D. 214 chuck wagons on floatation tires, J.D. No. 525 12' offset disc, N.H. 409 Haybine, N.I. 7' cut/ditioner, N.H. 268 baler w/thrower, 3 kick baler wagons with wide wheelbase, 12' wagon w/4 ft. grain sides, Smoker gravity body, rubber tire cart w/sides, 3 pt. double gang garden disc (like new) 8 ft. double gang cultipacker, Liston 7'6 rotary mower, 3 pt. scraper blade H.D. loader forklift attach, tractor grass seeder.

HOG EQUIPMENT: 6 H.D. pipe farrowing crates w/feeder doors, 4 Badger auto-waters, 2 round metal 12 door feeders, 2 barrel waters, smaller feeders, misc. feeders troughs.

Cub Cadet lawn tractor, portable air compressor, Iron wheels, 2 8.25 truck tires, Pro-Mo tank, 2 18' pipe gates, tractor chains, monogram heaters, 12.4-38 tractor tires, 3 14 ft. gates, 75 locust post, 18 stanchions, cattle head gate, elec. fences & supplies, hand tools, elec. motors, vacuum pump, Jet pump water system, many items too numerous to mention. Not Responsible for Accidents on the premises. Terms: Cash on the day of the sale.

**JAMES LADSON & FLOYD BOWMAN**

8209B Reich Ford Rd.  
Frederick, Md.  
301-663-0114

Auctioneers:  
Ridgely & Streaker  
489-4039 or 489-4637

Clerks: M. & E. Craig

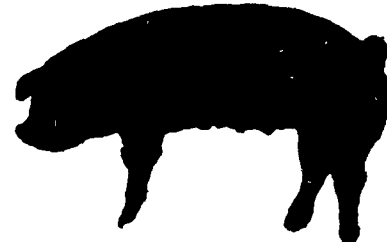
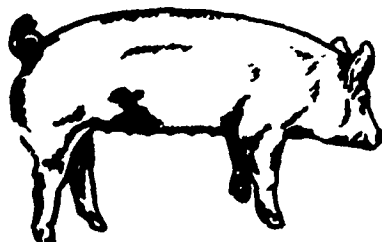
Lunch Right Reserved

**Lawrence, Leon and Thomas Arnold 21st PRODUCTION**

**SALE**

Yorkshires

Durocs



**AUCTIONEER, Harry Bachman, Annville, PA**  
**50 BRED GILTS (All gilts are hand mated)**

Registered Yorkshire - Registered Duroc  
Due February, March, April

**40 BQARS (Seven to eight months old)**  
25 Yorkshire - 15 Duroc

**50 OPEN GILTS (Ready to breed)**  
**Yorkshire, Duroc & Crossbred**

Soundness and production are top priorities in our breeding program. Our Yorkshire herd is unsurpassed in production per sow for herds this size. Our animals have done well in test stations. Pennsylvanias 1st Superior Certified Duroc Meat Sire came from our herd. We also had the top indexing boar over all breeds, Pa. State 1979 ("Hustle") and the top boar in Delaware 1980 (Explorer).

All animals vaccinated for Erysipelas & Lepto & Rhinitis  
Validated Brucellosis & Pseudorabies Free Herds #101 & #53  
**Saturday Noon, Feb. 13, 1:00 P.M.**

SALE TO BE HELD AT THE  
**Lebanon Area Fairgrounds**  
(CORNWALL & EVERGREEN ROADS, 1½ MILES SOUTH OF)

**Lebanon, PA**  
WRITE OR CALL  
**LEON L. ARNOLD, R.D. 7, BOX 705, LEBANON, PA 17042**  
PHONE: (717) 273-5880  
CATALOGUES AVAILABLE FEB. 1st  
NEXT SALE APRIL 23, 1982