

PUBLIC SALE

COMPLETE DISPERSAL OF HOLSTEIN HERD, HORSE DRAWN FARM MACHINERY, MULES, EAR CORN, HAY MILKING EQUIPMENT
FRIDAY, FEBRUARY 19
 9:30 A.M.

Located in Lancaster County, PA - 16 miles south of Lancaster - 6 miles southeast of Quarryville - 1/2 mile off Route 272, at Valley Restaurant go west, turn left at stop sign.

HOLSTEIN HERD AT 1:00 P.M.

35 head milk cows, 10 fresh January & February, 9 due in March and early April, balance in all stages of lactation, 2 bred heifers, 13 yearlings and calves. Cow in this herd have milked over 100 lbs. Stock bull with papers. Herd peaked in 1981 at 2,472 lbs. milk, 4.0% fat per day. 30 day charts - Pregnancy checked.

AUCTIONEER'S NOTE: This is a Hi-production herd in fine condition with good udders and size!

7 HEAD MULES

6 sorrel mules, 1 all purpose mare, all well broke, 1 pair sorrel blonde, well mated, 1 pair dark sorrel, well mated, broke to the word, 2 odd mules; 7 set of harness; bridles & collars; 2 - 3 - 4 - 6 horse hitches.

MILKING EQUIPMENT - SPUTNICK

3 Delaval milker units w/30 lb. pails, Sterling pulsators; carrying pail; stainless steel tubs; M2 Master Port vacuum pump; Lister diesel, used 3 years.

FARM MACHINERY

John Deere 2 bottom trailer plow, steel bottom; 24 disc McCormick Deering disc harrow; John Deere 3 section spring tooth harrow; 9 foot double roller cultipacker; New Holland 456 7 foot bar mower w/10 h.p. Lombardini diesel, fully hydraulic control; New Holland 404 crimper w/automatic turn front; Allis Chalmers 444 baler w/Wisconsin engine, starter; 2 flat bed wagons; 4 cycle Wisconsin engine w/clutch reduction; John Deere 999 corn planter; McCormick Deering 2 horse binder, ground drive; Papec 16 inch ensilage cutter; New Idea 323 corn picker; New Idea fertilizer and lime drill; boom sprayer on chassis w/fiber glass tank and Briggs & Stratton engine; New Idea 4 bar rake; New Idea 206 manure spreader; Cardinal 32 foot bale & grain elevator; McCormick Deering 2 horse cultivator; McCormick Deering 12 disc grain drill; 50 foot silo pipe; new P.T.O. shaft for corn picker; 275 gallon fuel tank; 50 foot endless belt; 2 fore carts, 1 automatic turn; silage and feed carts; manure sled.

LINCOLN PORTABLE WELDER

used 2 years.

Approximatley 20 ton alfalfa hay - Approx. 35 ton ear corn Allis Chalmers D17 tractor on steel with pulley, good condition.

Terms by:

AARON S. & EMMA P. STOLTZFUS

Auctioneers:

Steve Petersheim
 717-786-4624, 215-593-2442
 Everett Kreider

Come early to see farm machinery sold, not many small items.

Lunch on Premises

Selling for health reasons - an opportunity to buy mules & farm machinery of good quality!

PUBLIC SALE

COMPLETE DISPERSAL OF HORSE DRAWN FARM MACHINERY - HORSES & MULES
ANTIQUES - QUILTS
THURSDAY, FEBRUARY 18, 1982
 9:30 A.M.

Located in Lancaster County, PA - 9 miles east of Lancaster, 2 miles west of Intercourse on North Harvest Road. Turn north off Route 340 at Kauffman's Fruit Farm.

MULES & HORSES

4 pair blonde sorrel mules, well mated and broke, 4 mules worked together on this farm for 6 years; 12 carriage horses, all fine quality, 6 standard bred, 6 saddle bred by Ben King; 1 pair top work horses.

SEE HORSES HITCHED AT 8 o'clock SALE DAY

FARM MACHINERY

2 McCormick Deering 2 way plows, steel bottoms; McCormick Deering 20 disc disc harrow; 3 section spring tooth harrow; 2 single roller cultipackers; New Idea 276 cultiditioner; 2 McCormick Deering cultivators; McCormick Deering No. 9 mower 7 ft. bar; Verner hay crimper w/15 h.p. Wisconsin engine; New Holland hay rake rubber att. teeth; New Idea 4 bar rake; International 37 baler, fine condition w/engine; 24 ft. mow conveyor; 2 flat bed wagons; McCormick Deering corn binder w/loader and 11 h.p. Wisconsin engine; Gehl 800 recutter blower; John Deere 999 corn planter; New Idea transplanter; Allis Chalmers D14 power unit; McCormick Deering W6 standard tractor; McCormick Deering 19 hoe grain & fertilizer drill w/small seed attachment, twin levers, nice condition; New Idea 323 1 row corn picker; 2 New Idea 206 manure spreaders, 1 with end gate, 1 like new; Wizard 106 walking plow; Hydraulic motor; 50 ft. hose; 2 horse dirt scoop; 7,000 tobacco lath; 80 gallon gas hot water heater; 2 Minnich tobacco presses; 10 milk cans; stainless steel milk strainers; 3 single cultivators; 2 set tobacco hoers; Bob sleigh; 8 set work harness; bridles & collars; 9 - 10 extra sets of harness and collars; set of driving harness; many double - triple - single trees; 4 - 5 - 6 horse hitches; jockey sticks; wagon load of small items sold first.

6 NEW QUILTS HAND MADE BY STOLTZFUS FAMILY

1 each Lone Star, Wedding Ring, Giant Dahlia, 2 Log Cabin

ANTIQUES OUT OF ATTIC

Double oak bed with fancy carvings, real nice; large wooden butter churn on wooden stand; cherry drop leaf extension table, approx. 150 years old; copper kettle; oak dresser w/dove tail drawers, 1 with mirror; oak wash stand; partial brass bed; lamps; 2 baby cribs; plan pen; kitchen extension table with boards; a few dishes; iron skillet; iron kettle; crocks; cross cut saw; old doors; treadle sewing machine w/oak cabinet; many small items.

Terms by:

LEVI S. STOLTZFUS

Auctioneers
 Steve Petersheim
 717-786-4624
 215-593-2442
 Everett Kreider

Plenty of Good Home Made Food

AUCTIONEERS' NOTE: An opportunity to buy machinery, livestock, antiques in nice condition.

Public Sales Register

Closing Date - Monday, 5:00 P.M. of each week's publication

FRI. MARCH 19 - 9 A.M. Public Sale of Antiques. Located in the Shrewsbury Fire Co. Hall, 1/4 mi. off Exit of I-83 or just one block from the square of Shrewsbury, York Co., PA. Clyde Attig, Owner. Robert L. and Thomas H. Sechrist, Auctioneers.

FRI. MAR. 19 - 6:30 P.M. Consignment Sale of Cattle and Feeder Pigs Keister's Middleburg Auction Sales, Inc. Rt. 522, 3 miles East of Middleburg, 5 miles West of Selinsgrove, Pa. Don & Walt Keister, Owners, Ray Long & Dave Imes Auctioneers

FRI. MARCH 19 - 9:30 A.M. Public Sale of Cattle, Dairy Equipment and Farm Machinery. Located in Centre Co., 3 mi. south of Bellefonte, PA, turn east off Rt. 144 at Axeman on Irish Hollow Rd., about 1/4 mi. Mrs. Bruce (Joann) Benner, RD 5, Bellefonte, PA. Mark Glick, Auctioneer.

SAT. MARCH 20 - 6:30 P.M. Danville Livestock Market, horse sale located Old Route 11, Danville, PA. Melvin M. Lehman, owner.

SAT. MARCH 20 - Public Sale of Farm Equipment. Located near Victor, NY. Saxby Imp. Co. Annual Sale. Ralph W. Horst and Blaine Rentzel, Auctioneers.

SAT. MARCH 20 - 10 A.M. Public Sale of Modern

Farm Equipment. Located off Rt. 283 at the Salunga Exit, go south on Prospect Rd. to Eby Chiques Rd., RD 3, Mt. Joy, Pa For Minnie V. Gantz, C.H. Wolgemuth, Auctioneer.

SAT. MAR. 20 - 10 A.M. Public Sale of Real Estate, Household Goods and Antiques. Located in the Village of Cambridge. Lena Musser, Owner. Steve Petersheim, Auctioneer.

SAT. MARCH 20 - 11 A.M. Public Sale of Trucks, Farm Machinery and Potato Handling Equipment. Located approx. 6 mi. south of Red Lion, PA off Rt. 74 turning at the Formerly known Leiphart's Auction Room onto Jacobs Rd. and proceed 1/4 mi. to sale. Ray E. Bacon, Owner. Robert L. Sechrist, Auctioneer

SAT. MARCH 20 - Public Sale of Farm Machinery and Trucks. Located 6 mi. east of McAlisterville, Juniata Co. Mrs. Joseph "Judy" Elsasser, Owner. Long Bros., Auctioneers.

SAT. MARCH 20 - 9 A.M. Public Sale of Farm Equipment. Located at the Kempton Community Center. 12 Auctioneers. For information call 215-756-6511.

SAT. MAR. 20 - 10 A.M. Public Sale of Farm Equipment. Located at 1841 Pine Hall Dr., State College, PA. Markles Farm Equipment, Owners. Ron J. Gilligan, Auctioneer

SAT. MAR. 20 - 10 A.M. Public Sale of Tractors, Nursery Equipment and Machinery. Located taking U.S. Rt. 30, 5 mi. west of Gettysburg, PA (Gettysburg Nursery.) Robert L. Griggs, Owner. C. David Redding, Auctioneer.

SAT. MARCH 20 - Consignment Farm Machinery Sale. Located at the farm of Melvin Graybill, 2 mi. west of Selinsgrove on Rt. 35, turn left at blinker light in Village of Kantz, 1 mi. to sale. Look for sale signs. Bryan D. Imes, Auctioneer. For information call Melvin Graybill 717-374-1618

SAT. MARCH 20 - Public Sale of Farm Equipment. Located 3/4 mi. northwest of Lewisburg, Union Co. Mr. and Mrs. Bruce Miller, Owners. Wayne Hess, Auctioneer.

SAT. MARCH 20 - 9:30 A.M. Public Sale of Equipment. Located at Towne Tractor Co., Rt. 33, Freehold, NJ. Consignment Sale. Jack Wootton, Auction Manager.

MON. MAR. 22 - 2 P.M. Danville Livestock Market, cattle and hog auction. Located Old Route 11, Danville, PA. Melvin M. Lehman, owner.

MON. MARCH 22 - Annual Consignment Auction of Farm Equipment by M.M. Weaver & Sons, Inc. N. Groffdale Road, Leola, Pa. John E. and Paul E. Martin, Auctioneers.

WED. MARCH 24 - Public Sale of Farm Machinery. Located on Rt. 2, Lebanon, PA. Albert Moyer, Owner. Harry Bachman, Auctioneer.

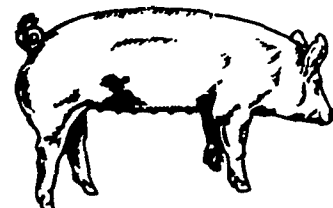
HOUVALE FARMS

8th Yorkshire Production Sale
SATURDAY, FEBRUARY 27
SALE 1:00 P.M.

LOCATION: Lebanon Area Fairgrounds, Evergreen Road and Cornwall Road, Rocherty Road East off of Route 72, Lebanon, Pa.

Buy from one breeder at this sale and be confident. Also Upgrade your Sow Productivity with Purebred Hogs.

YORKSHIRES



Bred Gilts are hand mated to fit your farrowing schedule. Many are bred to our new herd sires from Ind. Luke and Complete. We had the first place March Gilt at the 1982 Farm Show.

SELLING APPROX. 50 BRED GILTS
30 OPEN GILTS
25 BOARS

Our Fall Test Station results from Penn State: 155 days to 220 lbs. DG 1.98 Length 32.6 in. B.f. 1.18 LE. 4.42, Ham Loin % 29.19.

All animals will be bled and negative to Pseudorabies and Brucellosis so they can go into any state on sale day.

For Catalogue, Write to:

ELWOOD E. HOUSER

2150 Quentin Rd., Lebanon, PA 17042
 Phone (717) 272-5798 or (717) 273-2921

THIS IS INVESTMENT DAY

AUCTIONEER: Col. HARRY BACHMAN

SAYLOR FARM DISPERSAL

at Jackson Center, Pa.

THURSDAY, FEB. 11, 1982
 11 A.M.

Directions: Off Rte. 328, between Jackson Summit & Millerton, 15 mi. from Mansfield, Pa., or Elmira, N.Y. (Come Early: Selling large machinery first, small items next, real estate at 12:30, followed by cattle.)

42 Holsteins (37 cows & 5 hfrs.)

2 tractors: AC "5040-D" (wfe., ps., wts.) w/3b. 14" plows and IH "M" (both recently overhauled). New Gehl "7200" flail Chopper (cut only 10A). Sharp NH "310" kicker-baler & "56" rolabar rake. NH 7' haybine. AC "1405" spreader (all new chain & bearings), hay wagons, drill, drags, elevator, 4 Surge units, dump station, 20,000 KBW generator, compressor, 8T. fert., corn & grass seed, quantity hay & silage.

Very nice 82A. farm offered at auction at 12:30 p.m.; Lovely farm home, mobile home, equipped and ready barn. Assumable mtg.-look this one over!!

Owned by,

MR. AND MRS. CARL SAYLOR

For full list or info on real estate or personal property, contact: Rumsey Sales, Bath, N.Y. (607-776-3478).