

FARM EQUIPMENT

FARM EQUIPMENT

FARM EQUIPMENT

FARM EQUIPMENT

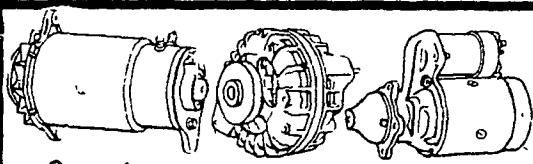
FARM EQUIPMENT

FARM EQUIPMENT

FARM EQUIPMENT

**HYDRAULIC REPAIRS
CYLINDERS • JACKS
PUMPS • CAB JACKS**

BEARTOWN HYDRAULICS
New and Used Equipment
Narvon, PA
Rt. 322 Midway
between Honey Brook & Blue Ball
Phone 717-354-5649



Generators Alternators Starters

We will repair or rebuild your tractor diesel or truck starter, generator or alternator. We can return by UPS. All work guaranteed.

EXPERT REPAIRS
PEQUEA BATTERIES
Ronks, PA 17572

**NEW LEADER Lime & Fertilizer
Spreaders**

**HI-WAY Cinder Spreaders - All
Types**

FRINK & VALK Snow Plows

ANNVILLE BODY CO.

P.O. Box 217, R.D. #3
Anncville, Pa. 17003
Phone 717-867-4631

**Poly-glass
fertilizer
storage tanks**
11 sizes up to 6000
gallons

Cone-bottom tanks
from 250 gallon
to 2500 gallons

Early order discount

**Thomas Bachman
& Sons**
2501 Fallston Rd.
Fallston, MD 21047
301-836-6877
or 557-7529

Savings Roundup Time

Corral big bargains now on selected Used Equipment



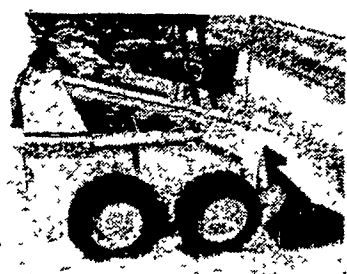
NH 489 Mower Conditioner
Clean
\$4800⁰⁰



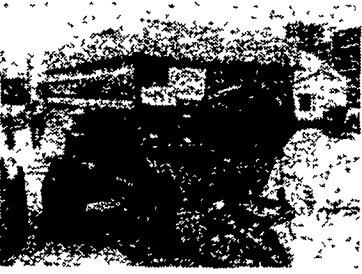
JD 2840 (Loaded)
\$15,500⁰⁰



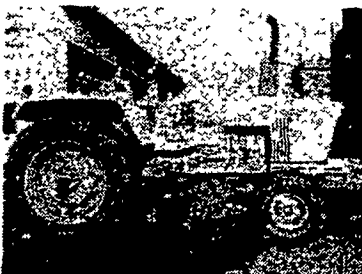
JD 3020D Late Model,
Engine Overhauled, New Paint
\$8900⁰⁰



Mustang 1700 Diesel
Engine Overhauled
\$7450⁰⁰



Van Dale 210 Mix Wagon
With Scales **\$6500⁰⁰**



Case 1270, 135 H.P.
Less Than 300 Hours
\$18,900⁰⁰



Mowhawk 70 Chisel Plow
7 tooth
\$1150⁰⁰



JD 7000 6 Row Narrow, Max Emerge,
w/Fertilizer, Insecticide, HD Coulters -
(like new)
\$7500⁰⁰

**USED HARVESTING
EQUIPMENT**

- NH Super 717 with 2 Row
717R2 Corn Head \$2250
- NH 1 Row 717 Corn Head \$775
- NH 717S Harvester \$1800
- Fox Hay Pickup \$500
- NH 717 Harvester \$1350
- NH S717, New Knives \$1650
- NH 717 R2, Corn Head \$650
- NH 718 Harvester \$3500
- NH 770 R2 Corn Head \$1350
- NH 707 3 Pt Hitch one
Row \$2350
- NH 1890 Harvester with 890A
Auger Base and 890N3 Three
Row Narrow Corn attachment low
hours, field ready \$32,250
- NH 890A Auger Base w/890N3
3 Row Narrow Corn
Head \$4000
- NH 717S Harvester \$1775
- NH 717 Harvester \$400
- NH 717 1 Row Corn Head \$200
- NH 880 Harvester w/880 R2
Corn Head \$2650
- NH 1895 Harvester w/1895 A Auger
Base and 1895 N4 Corn Head
- Used 1 Season \$51,000
- NH 1895A Auger Base and 1895 N4
Corn Head \$8000
- Fox 2300 Harvester w/2 Row Wide
Corn Head \$2995
- JD 3960 Harvester \$11,546
- JD 2 Row Narrow Corn Head \$2500
- NH S717 Harvester \$1875

- NH 717R1 Corn Head \$850
- JD Hay Pickup \$500
- JD 1 Row Corn Head \$475
- NH 770 1 Row Corn Head \$850
- JD Elevator 36 Ft. \$1085
- NI 323 Corn Picker \$3250
- Badger Forage Box with
Gear \$1875
- Gehl Forage Box w/NH 234 Running
Gear \$2850
- McCurdy Gravity Box \$550
- JD 1065A (New) w/16"
Truck Tires \$800
- Kill Bros. Hydraulic
Unloading Auger \$225
- NI 620 Blower, Nice \$1250
- Gehl 99 \$1800
- JD Hay Pickup for 34 Harvester \$550
- NH 707 w/Hay Pickup \$525
- NH 880 N3 Corn Head \$2800

- USED COMBINES AND ATTACHMENTS**
- NH TR70 Ford Diesel, Var.
Speed \$34,500
 - NH 962 N4 Corn Head \$4250
 - NH 960 13 ft. Flex Grain
Platform \$2850
 - JD 444 4 Row Wide Corn Head \$4250
 - JD 244 2 Row Wide Corn Head \$1600
 - NH 960 13' Flex Grain Platform \$2850
 - Case 1665 Combine (Gas) w/4
Row Wide Corn Head
and Grain Platform \$10,500
 - NH 962 N6 Corn Head
(Demo) \$8850
 - NH 960 15 ft. Flex
Grain Head (Demo) \$4500

USED HAY EQUIPMENT

- JD24T Engine Baler \$1995
- JD 224T Baler \$2450
- NH 68 Baler \$1550
- NH 68 Baler \$1500
- NH 271 Baler w/Thrower \$1950
- JD 14T PTO Baler w/Ejects \$1250
- JD 14T Baler \$600
- Ford 530 Baler \$850
- NH 282 Baler w/thrower \$2995
- JD 346 Baler \$3250
- NH 273 Engine Baler
w/Steel Wheels \$3250
- JD 336 Baler w/30 Ejector \$4750
- JD 24T PTO Baler \$1395
- MF 12 Engine Baler \$1595
- NH 268, PTO Baler \$1775
- Bale Eater, 3 pt. Big Bales \$985
- Welzer P22 Baler
(German Made) \$1950
- JD 24T \$1500
- NH 273 Engine \$3450
- Triumph Hi-Way Mower
JD 25A Flail Mower,
Like New \$1250
- Bushhog 14' Rotary Cutter \$1800
- JD 350 Rake \$450
- NH 55 Rake \$795
- JD 10 Mower \$195
- NH 477 Haybine \$2675
- NI 270 Cut Ditioner \$1650
- NH 469 Haybine \$2650
- IH Hay Crimper \$150
- NH 479 Haybine \$2950
- JD 1380 Mid Pivot \$5450
- NH 1469 Self Propelled 9 ft. \$4850
- NH 467 Haybine \$2000
- NH 845 Round Bales \$3800
- NH 467 Haybine \$2000

**USED PLANTERS AND
GRAIN DRILLS**

- JD 494A - 4 Row Planter \$550
 - JD 494A - 4 Row Plate,
w/tert. Insect \$1000
 - JD 246 \$400
 - JD FB 14x7 Drill w/fertilizer
Grass Seed, Single Disk
Openers \$950
- USED TILLAGE**
- JD 9' Spring Tooth Harrow \$450
 - Dunham 10' Packer \$600
 - JD 350 - 5 Bottom Hydraulic
Reset Plow \$3250
 - Ford 206 - 12', 3 Point, Spring
Tooth Harrow \$425
 - JD 208 Killifer disk \$450
 - Brillion LFM 9 Ft. Packer \$375
 - JD 91 Spring Tooth Harrow \$450
 - JD 10 Ft. 3 Pt. Field Cultivator \$1250

**USED TRACTORS
AND LOADERS**

- JD 2010 Gas, 45 H.P. \$3450
- JD 2640 1200 Hours \$12,750
- Farmall H \$1100
- JD 37 Baler Mechanical
Dump \$350
- JD 47 Loader Mechanical
Dump \$6750
- JD 2940, Low Hours, Factory
Warranty \$18,250
- White 2-150D, 1500 Hours, 170 H.P.,
Turbo \$17,000

**USED GRINDER MIXERS
AND MIX WAGONS**

- JD 750 (Excellent Cond.) \$5500
- Bearcat 540 & 1000 RPM
Hammermill \$995

USED MISCELLANEOUS EQUIPMENT

- NH D100 Backhoe \$2950
- NH T330 Trencher \$2400
- 295 Bushel Batch Dryer \$1100
- Heavy Duty V-Plow and Dozer
Blade for White 2-150
Tractor \$1500

USED SPREADERS

- NH 512 \$1350
- NH 510 \$1575
- NH 790 \$3990
- NI 512 w/Hydraulic
Endgate \$875
- Stoltzius 5 Ton Fertilizer
Spreader with Sower \$3850
- NI 213 \$1800
- NH 675 \$475
- NH 365 Tank \$1695
- NH 518 \$2150
- NI 218 \$4250
- NH 518 \$1800
- NH 512 \$1250
- NH 365 \$1450
- JD 40 \$1650
- NH 512 \$1475

**COMING —
NEW HOLLAND DAY
THURS. MARCH 18**



STORE HOURS
Mon., Tues., Wed. 7-5
Thurs., Fri. 7-9
Sat. 7-4
Parts 717-354-4191
Sales 717-354-4731
Service 717-354-8004

Since 1890
110 S. Railroad Ave.
New Holland, PA 17557



**OPEN THURSDAY
AND FRIDAY UNTIL 9 P.M.**

**OUR TRUCKS
ARE
RADIO
CONTROLLED**

ABC GROFF, INC.