

Livestock market and auction news

Dewart Auction

Dewart, Pa.
Monday, Jan. 25

Report supplied by PDA

CATTLE 207. Compared with last Monday's market, slaughter cows \$1-\$2.50 lower. Low to Average Choice 1050-1400 lbs. 2-4, slaughter steers 59.50-62.25, Good 54.50-59, Standard 52.00-54. Choice slaughter heifers 58-61.35, few #1, 63.85, Good 52.50-57, few Standard 48-52.10. Utility and Commercial slaughter cows 37.60-42.75, few 46.25, Cutters 33-38.50, Canner and Low Cutters 30-33.50, few Shells down to 20. Individual Good slaughter bullock at 54.75. Few Yield Grade #1, 1030-1860 lbs. slaughter bulls 49-55.75.

CALVES 217. Few Choice vealers 90.00-100, few Good 75.00-90, Standard and Good 70-5 lbs. 45.00-60. Farm Calves: Hol. Bulls 85-130 lbs. 60.00-96, mostly 75.00-90.00.

HOGS 330. Barrows and gilts \$2 higher. US No. 1-2 215-230 lbs. barrows and gilts 52.60-53, large lot 53.90, No. 1-3 210-255 lbs. 51.40-52.60, few lots No. 1-3 175-185 lbs. 48.20-49. US No. 1-3 300-550 lbs. sows 43.00-45, few No. 2-3 450-650 lbs. 40.00-43. Couple Boars 31.00 & 35.

FEEDER PIGS 92. US No. 1-3 20-35 lbs. feeder pigs 15.50-25 per head, No. 1-3 55-85 lbs. 30.00-33 per

head.
SHEEP 11. Few Choice 85-100 lbs. wooled slaughter lambs 52.50-62.50. Few Slaughter ewes 19.00-32.00.

G&M Livestock

Monday, Jan. 25
Duncansville, Pa.

Report supplied by auction

Compared to last week, market report steers-higher, cows-weak, hogs-sharply higher.

STEERS: High Choice and Prime none; Good to Choice 60.00-62.90; Good 54.00-60.00; Standard 48.00-52.00; Utility 42.00-48.00.

HEIFERS: High Choice and Prime 56.00-60.50; Good to Choice 52.00-56.00; Standard 48.00-52.00; Utility 42.00-48.00.

FEEDERSTEERS: Good to Choice 300-500 lbs. 48.00-59.00.
BULLS: 1000-1706 lbs. 50.00-57.85; 900-1000 lbs. 48.00-50.00.

COWS: High Choice to Prime 44.00-46.00; Good 42.00-44.00; Utility 38.00-42.00; Cutters 34.00-38.00; Canners Down to 30.00.

CALVES: High to Choice 90.00-101.00; Good to Choice 70.00-90.00; Standard to Good 50.00-70.00; Utility 30.00-50.00.

FARM CALVES: Hol. Bulls 70.00-99.00.

FEEDER PIGS: 25-50 lbs. 28.00-34.00.

HOGS: 200-240 lbs. 50.00-53.10; 170-300 lbs. 44.00-50.00.

SOWS: 38.00-47.50.
BOARS: 35.00-41.50.
LAMBS: 45.00-56.00.
SHEEP: 8.50-33.00.

Special Horse Sale

New Holland Sales Stables

Friday, Jan. 22

Report supplied by auction
Work Horses, Mules

286 head.
Two loads TN. work horses & mules, horses singles 875.00-1975.00, pairs 2400.00-2950.00, mules singles 750.00-950.00, pairs 1700.00-2650.00.

Va. work horses singles 1175.00-1925.00, pairs 2100.00-3200.00.

Md. work horses singles 810.00-900.00.
Ky. work horses pairs 2000.00-2500.00.

Pa. work horses singles 925.00-1175.00, pairs 1300.00-1675.00.
Few Belgian mares from Canada singles 2550.00-3350.00.

Two loads mules & work horses, TN., mules singles 1100.00-2500.00, pairs 2000.00-3225.00; work horses singles 1050.00-1375.00, pairs 1900.00-3400.00.

Driving horses
Pa. 485.00-750.00, New York 650.00-1000.00, N.Y. 590.00-850.00.
Saddlebred driving Ky. 575.00-1650.00.

Local driving 650.00-975.00; local work horses singles 650.00-1100.00, pairs 1800.00-2350.00; local mules singles 675.00-1275.00, pairs 1700.00-2250.00.

See us for the best prices on the following ALFALFAS:

- WL 311 (A)
- WL 313 (A-P)
- WL 318 (A-P)
- Apollo (P)
- Suranac AR (A)
- Cert. Vernal
- Uncert. Buffalo

(A) = Anthracnose resistant
(P) = Phytophthora tolerant

CLOVER

- Cert. Arlington • Medium Red
- Alsike

VORIS SEED CORN

100 to 122 days maturity, suitable for silage, grain, no-till price ***\$8.80**

★ FREE INNOCULATION

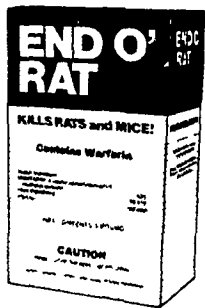
REIST SEED COMPANY

Fienst Seeds (Since 1925)
Mount Joy, PA 717-653-4121

Kills rats and mice!

End O'Rat works fast to kill unwanted rats and mice. Completely safe for use around the home, farm or factory buildings. End O'Rat is specifically formulated to appeal to the natural feeding habits of rats and mice. And End O'Rat contains Warfarin—for proven effectiveness. Put End O'Rat to work for you today!

END O' RAT



Distributed by

New Holland Supply
717-354-4001

Animal Medic Supply
717-266-5611

Caldwell Supply Co.
609-882-2223

Aaron S. Groff
717-354-4631

FINAL NOTICE! For FREE Advertisement On Equipment Brought To Our PUBLIC CONSIGNMENT AUCTION

to be held on **SAT. FEBRUARY 27, 1982**

at **BINKLEY & HURST BROS. INC.**, 133 Rothsville Station Road, Lititz, PA

Bring Your Small Tools, Accessories, Loads of Hay and Straw, Corn Fodder, etc.

FINAL NOTICE

We must have your consignment listing by Monday, February 8 in order to be included in our pre-sale listing.

NOTICE! Hauling Services Available...Call 717-626-4705

St. Louis Cattle

Thursday, Jan. 28

Report supplied by USDA

Receipts this week: 5,000;
Week Ago: 6,200;
Year Ago: 5,000

Compared to the previous week bulk sales, slaughter steers .50-1.00 lower. Slaughter heifers weak to .50 lower. Cows steady to weak. Bulls steady to 1.00 higher. Slaughter supply mainly Choice and Choice and Prime slaughter steers, around 35% heifers and 10% cows.

SLAUGHTER STEERS: Mixed Choice and Prime 2-4 1050-1250 lbs. 60.75-62.00, closing 60.75-61.00; few lots 3-4 1050-1200 lbs. 60.00-60.50. Choice 2-4 950-1250 lbs. 59.50-61.00, closing 59.50-60.75. Mixed Good and Choice 2-4 900-1200 lbs. 58.00-60.50. Good 2-3 900-1175 lbs. 55.00-59.00. Mostly Good 2-3 1050-1350 lbs. holsteins 50.00-54.50. Standard to Good 2-3 1000-1350 lbs. 44.00-49.00.

SLAUGHTER HEIFERS: Through mid-week: Mixed Choice and Prime 2-4 875-1050 lbs. 60.00, part load early 60.25, not tested late; few lots 3-4 875-1050 lbs. 59.00-59.25. Choice 2-4 850-1050 lbs. 59.00-60.00; 800-850 lbs. 57.00-58.50. Mixed Good and Choice 2-3 750-1000 lbs. 57.00-58.50. Good 2-3 700-975 lbs. 53.50-57.00.

COWS: Closing week sales: Utility and Commercial 2-4 34.00-37.00. Boning Utility 1-2 37.00-39.00, several 37.00-38.00. Cutter 1-2 33.00-36.00. Canner and Low Cutter 1-2 29.00-33.00.

BULLS: Yield Grade 1-2 1050-1800 lbs. 43.00-50.00, closing 44.00-50.00. Yield Grade 1 1500-2200 lbs. 51.00-52.00.00.

FEEDERS: (Including around 1,500 at the regular Thursday auction.) Feeder steers steady. Feeder heifers firm to 2.00 higher. Demand moderate for steers, but good for increased percentage of heifers. Supply mainly Medium Frame 1-2 and 350-700# steers and 300-700# heifers. Good buyer attendance.

FEEDER STEERS: Medium Frame 1: 270-450# 60.00-63.75; 500-

600# 59.00-62.50; 600-700# 59.25-61.75; 750-975# 56.00-58.50. Medium Frame 1-2 and some Small Frame 1: 350-550# 55.25-59.00. Large Frame 2 Holsteins: Couple lots 630-825# 45.75-46.00.

FEEDER HEIFERS: Medium Frame 1 300-500# 50.00-54.25; lot thin 475# 55.00; 500-600# 50.75-52.25; 600-875# 50.75-53.50. Medium Frame 1-2 and few Small Frame 1: 400-525# 45.00-49.75.

STOCK COWS: Couple lots Small and Medium Frame 1-2 800-900# mostly middle-aged 37.00-39.00.

Belleville Auction

Wednesday, January 27

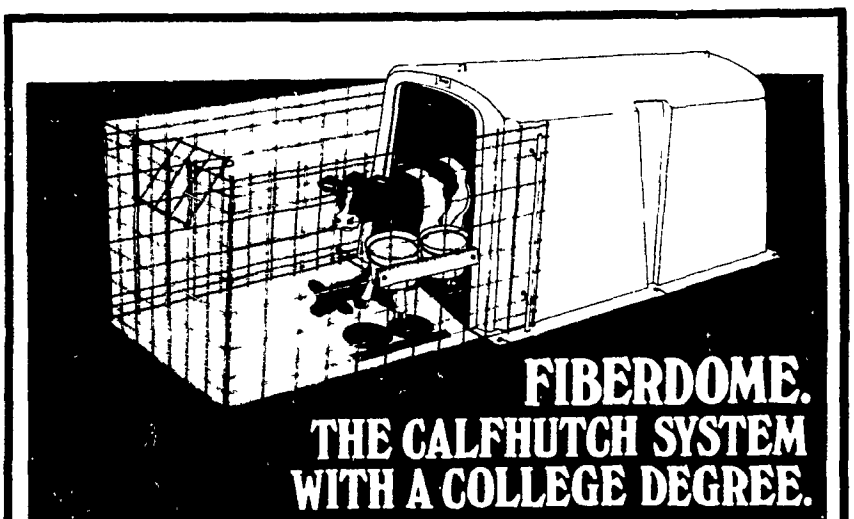
Report supplied by PDA

CATTLE 80. Compared with last Wednesday's market, slaughter cows \$1 to mostly \$2 lower. Couple Standard slaughter steers 53.85 & 54.85. Couple Utility slaughter heifers at 43.25. Utility and Commercial slaughter cows 36.75-40.75, couple 41.75, Cutters 34-36.50, few Canner and Low Cutters 30.60-34. Few Yield Grade #1, 860-1225 lbs. slaughter bulls 47.10-49.50. Few Medium Frame #1, 450-550 lbs. feeder steers 47.00-55.00.

CALVES 170. Few Good vealers 73.00-76, Standard and Good 70-100 lbs. 50.60-50. Farm Calves: Hol. Bulls 85-125 lbs. 62.00-102; few Hol. Heifers 90-120 lbs. 61.00-109.

HOGS 103. Barrows and gilts uneven, some sales \$1 higher. Few Lots US No. 1-2 215-240 lbs. barrows and gilts 48.00-49, No. 1-3 215-255 lbs. 45.10-48, few lots No. 1-3 190-195 lbs. 42-44.00. Few US No. 1-3 320-570 lbs. sows 39.50-42.50. Few Boars 28.50-35.25.

FEEDER PIGS 121. US No. 1-3 15-25 lbs. feeder pigs 8.50-15 per head, No. 1-3 50-75 lbs. 27.00-35 per head.
SHEEP 1. Goats 4: Few \$27-52.50 per head; **HOLSTEIN DAIRY COWS** \$500-950, **COUPLE** 1200.00.



FIBERDOME. THE CALFHUTCH SYSTEM WITH A COLLEGE DEGREE.

To build the most efficient hutch on the market, we've worked with the best veterinarians and dairy scientists in the country.

And today, 10 major universities use Fiberdome hutches, testing every inch—and giving us straight A's.

That's because each design detail is there for a good reason. Extra-heavy reinforced fiberglass, for rugged strength. One-piece seamless construction, sloped front-to-back, for self-ventilation. University tested to be warmer in winter and cooler in summer. Even a special weather resistant coating to control bacteria.

FREE with each Fiberdome CALFHUTCH purchased by January 31, 1982... a complete custom-designed galvanized fence, a \$27 value.

See your dealer for additional accessories to complete your Fiberdome system including bucket holders, feeding buckets, hay racks, and stake downs.

Fiberdome INC. ...made to last
P.O. Box 11, Lake Mills WI 53551

Find out more about the hutch with the college degree — return the coupon today! 1081

Name _____
Address _____
City _____ State _____
Phone _____ Zip _____