

Livestock market and auction news

Lancaster Market

Monday, January 25
Report supplied by USDA
Cattle Calves Hogs Sheep

Today	1058	117	1184	194
Last Monday	952	112	1821	127
Last Year	1267	113	1048	114
Monday's Auction	1129	118	1107	203
Last Monday's Auction	1046	114	1813	126

CATTLE: Compared to last Wednesday slaughter steers steady, instances 50 higher; slaughter heifers 1.00-1.50 lower; cows firm to 50 higher—instances 1.00 higher; bullocks 1.00 higher, instances 1.50 higher; bulls 1.00-2.00 lower.

SLAUGHTER STEERS: Few high Choice and Prime 3-4 1200-1325 lb. 64.50-65.35; Good and Choice 1-2 1100-1300 lb. 62.50-64.50; Choice 2-4 1025-1350 lb. 61.75-64.50; high Good and low Choice 2-3 975-1325 lb. 57.50-62.00; Good 2-3 55.00-58.50; Good and Choice 1150-1450 lb. Holsteins 51.50-54.75.

SLAUGHTER HEIFERS: Choice 2-3 875-1050 lb. 56.75-60.50, few Choice 2 61.00-64.50; Good 2-3 825-1075 lb. 53.00-57.00, few 57.00-58.00.

COWS: Utility and Commercial 1-3 40.00-41.50, few 41.75-43.00; Cutter 1-2 38.50-40.50; Canner and low Cutter 35.00-38.50.

BULLOCKS: Choice 1000-1300 lb. 60.50-65.50, few 65.50-67.25; Good 1000-1350 lb. 55.00-60.50.

BULLS: Yield grade 1 1400-2000 lb., few 2000-2450 lb. 52.50-55.00, few 56.00-59.00; yield grade 2 1000-1400 lb. 48.00-53.00.

VEAL CALVES: Vealers steady, instances 8.00 lower on Choice and Prime; slaughter calves 5.00-8.00 higher.

VEALERS: Choice and Prime special fed 280-350 lb. 100.00-105.00; Choice 190-250 lb. 85.00-98.00, few 98.00-106.00; high Good and low Choice 160-230 lb. 75.00-90.00, 115-155 lb. 55.00-70.00, 80-110 lb. 40.00-50.00 few 50.00-55.00.

SLAUGHTER CALVES: Choice 270-380 lb. 65.00-70.00, few 70.00-79.00; Good 250-350 lb. 58.00-65.00.

RETURNED TO FARM: Bulk 90-115 lb. Holstein bulls 85.00-96.00; 85-90 lb. 65.00-75.00.

SHEEP: Woolled lambs steady; slaughter ewes firm to 5.00 higher.

WOOLED LAMBS: Choice 75-105 lb. 54.00-57.00, couple lots 58.00-60.00; Good 65-100 lb. 48.00-54.00; couple lots Choice 65-70 lb. new crop lambs 75.00-79.00.

SLAUGHTER EWES: Utility and Good 28.00-35.00, few 35.00-40.00.

Vintage Auction

Tuesday, January 26
Report supplied by USDA
Cattle Calves Sheep

Today	1090	703	3
Last Tuesday	841	715	3
Last Year	929	683	11

CATTLE: Compared to last Tuesday slaughter steers steady, instances 50 lower on Choice and Prime; slaughter heifers fully steady; cows mostly steady, few sales Utility weak to 50 lower; bulls and bullocks not fully tested. Supply included 64 per cent slaughter steers and 28 percent cows.

SLAUGHTER STEERS: Few high Choice and Prime 3-4 1175-1450 lb. 64.50-65.35, couple 65.50-66.10; Good and Choice 1-2 1150-1475 lb. 64.00-65.75, five head 66.00-66.75; Choice 2-4 1050-1375 lb. 61.50-64.75, few 64.75-65.25, couple lots 1000-1050 lb. 60.60-61.50; high Good and low Choice 2-3 57.75-61.50; Good 2-3 56.60-59.00; Good and Choice 1250-1450 lb. Holsteins 50.00-54.50, 12 head 1680-1750 lb. 53.85-56.00.

SLAUGHTER HEIFERS: Choice 2-3 900-1075 lb. 58.25-60.00, few 60.00-61.75; Good 2-3 850-1050 lb. 55.00-58.00.

COWS: Utility and Commercial 1-3 39.75-42.50, few 42.50-43.00; few Commercial 3-4 36.75-39.50; Cutter 1-2 38.50-40.50, few 40.50-41.50; Canner and low Cutter 36.00-38.50.

BULLS: Couple yield grade 1

1500-1925 lb. 53.00-55.75; couple yield grade 2 1140-1900 lb. 47.25-50.00.

VEAL CALVES: Vealers fully steady, instances 5.00 higher on high Good and low Choice 70-115 lb. Supply included 581 in graded sale of which 67 per cent sold to return to farm.

Choice 180-290 lb. 94.00-102.00, individual 104.00; high Good and low Choice 140-210 lb. 75.00-90.00, 115-140 lb. 60.00-75.00, 90-115 lb. 52.50-60.50, 70-85 lb. 50.00-56.50.

RETURNED TO FARM: 20 head 115 lb. Holstein heifers 80.00; 40 head 100-105 lb. 62.00-70.00; and 32 head 80-90 lb. 53.50-55.50. 210 head 100-125 lb. Holstein bulls 91.00-98.00; 37 head 90-95 lb. 70.00-78.00; and 55 head 100-120 lb. small frame 58.00-62.00.

SHEEP: No market test.

Lancaster Auction

Wednesday, January 27
Report supplied by USDA
Cattle Calves Hogs Sheep

Today	334	33	714	1
Last Wednesday	301	40	559	0
Last Year	418	29	639	1
Wednesday's Auction	290	37	673	0
Last Wednesday's Auction	260	43	635	0

CATTLE: Compared to Monday small supply slaughter steers steady to weak; slaughter heifers steady; cows mostly steady; bulls and bullocks not tested. Supply included 59 per cent slaughter steers, 22 per cent cows, 15 per cent slaughter heifers, balance bulls.

SLAUGHTER STEERS: Few head high Choice and Prime mostly 3 1250-1425 lb. 63.25-64.75; Choice 2-4 1050-1350 lb. 61.00-63.50; high Good and low Choice 2-3 57.50-60.50; few Good 2-3 54.00-57.50.

SLAUGHTER HEIFERS: Choice 2-3 850-1150 lb. 58.75-61.50; Good 2-3 825-1075 lb. 52.00-57.00.

COWS: Utility and Commercial 1-3 38.75-41.00, few 42.00-43.00; Cutter 1-2 38.00-40.25; Canner and low Cutter 36.00-38.50.

BULLS: Couple yield grade 1

1350-1900 lb. 53.00-54.75; yield grade 2 1100-1500 lb. 49.00-51.50.

VEAL CALVES: Available supply vealers mostly steady.

VEALERS: High Good and low Choice 80-120 lb. 45.00-55.00.

RETURNED TO FARM: Several 95-115 lb. Holstein bulls 80.00-95.00.

SHEEP: No market test.

New Holland Livestock

Thursday, January 28
Report supplied by USDA

CATTLE: 905. Compared to last Thursday slaughter steers firm to .50 higher, instances 1.00 higher; slaughter heifers not fully tested; cows .50-1.00 lower; bullocks not tested; bulls 1.00-2.00 lower. Supply included 48 per cent slaughter steers, 39 per cent cows and 7 per cent bulls.

SLAUGHTER STEERS: High Choice and Prime 3-4 1200-1475 lb. 63.75-65.75, few 65.75-66.75; Good and Choice 1-2 1150-1500 lb. 64.00-66.50, few 66.50-67.50; Choice 2-4 1025-1450 lb. 61.00-64.50, few 64.50-65.25; high Good and low Choice 2-3 58.00-61.50; Good 2-3 54.50-58.50.

COWS: Utility and Commercial 1-3 38.75-41.50, few 41.50-43.25; Commercial 3-4 36.00-39.00; Cutter 1-2 38.00-40.00, few 40.00-41.00; Canner and low Cutter 35.50-38.00.

BULLS: Yield grade 1 1400-2000 lb. 52.25-55.50, couple 1625-2080 lb. 56.50-57.75 and couple 2230-2555 lb. 50.85-53.10; yield grade 2 1000-1450 lb. 48.00-52.25.

VEAL CALVES: 523. Choice and Prime vealer 5.00 lower, instances 10.00 lower; high Good and low Choice mostly steady. Demand good for calves to return to farm.

VEALERS: Prime special fed 260-375 lb. 100.00-106.00, couple 111.00-114.00; Choice 220-300 lb. 85.00-100.00; high Good and low Choice 160-280 lb. 75.00-90.00, 115-155 lb. 52.00-70.00, 90-115 lb. 40.00-52.00, 70-85 lb. 35.00-42.00.

RETURNED TO FARM: Bulk 90-125 lb. Holstein bulls 90.00-106.00, few 106.00-111.00, bulk 80-85 lb. 55.00-75.00; Bulk 80-95 lb. Holstein heifers 54.00-80.00, few 100-120 lb. 100.00-111.00.

SHEEP: 9. Insufficient volume for a market test, couple Choice 90-100 lb. woolled lambs 59.00-62.00.

GOATS: 22. All goats sold by the head mainly 24.00-42.00, couple 57.00-67.00.

Lancaster Weekly

Friday, January 29

This Week	Cattle Calves	3800	1380
Last Week		3686	1306
Last Year		3704	1355

CATTLE: Slaughter steers generally steady, instances .50 higher at close; slaughter heifers .50-1.00 lower; cows 50-1.00 lower; bullocks 1.00-1.50 higher on Monday, no test later in the week; bulls 1.00-2.00 lower. Supply included 53 per cent slaughter steers, 7 per cent slaughter heifers, 22 per cent cows, 7 per cent bulls with the balance feeder steers.

SLAUGHTER STEERS: High Choice and Prime 3-4 1175-1475 lb. 63.75-65.75, few 65.75-67.75; Good and Choice 1-2 1150-1475 lbs. 64.00-66.50 few 66.50-67.50; Choice 2-4 1025-1450 lbs. 61.00-64.50 few 64.50-65.25, high Good and low Choice 2-3 57.75-61.50, Good 2-3 54.50-59.00; Good and Choice 1150-1450 lb. holsteins 51.00-54.75; 12 head 1680-1750 lbs. 53.85-56.00.

SLAUGHTER HEIFERS: Choice 2-3 875-1150 lbs. 57.00-60.00; few Choice Grade 2 61.00-64.50; Good 2-3 825-1055 lbs. 52.00-57.00.

COWS: Utility and Commercial 1-3 38.75-42.00, few 42.00-43.25, Cutter 1-2 38.00-40.50 few 40.50-41.50, Canner and low Cutter 35.50-38.00.

BULLOCKS: Choice 1000-1300 lbs. 60.50-65.50 few 65.50-67.25; Good 1000-1350 lbs. 54.00-60.50.

BULLS: Yield Grade 1 1400-2000 lbs. 52.50-55.50 few 56.00-59.00; Yield Grade 2 1000-1400 lbs. 48.00-53.00.

VEAL CALVES: Choice and Prime vealers 5.00 lower, instances 10.00 lower, high Good and low Choice uneven. Sales early part of week fully 5.00 higher, closing sales steady. Demand good for calves returned to farm.

VEALERS: Choice and Prime special fed 260-375 lbs. 100.00-106.00, couple 111.00-114.00; Choice 190-250 lbs. 85.00-100.00, few 100.00-106.00; high Good and low Choice 160-280 lbs. 75.00-90.00, 115-155 lbs. 52.00-70.00, 90-115 lbs. 40.00-52.00, sales early part of week 52.00-60.00, 70-85 lbs. closed at 37.00-42.00.

RETURNED TO FARM: Few 100-115 lb. holstein heifers 80.00-110.00; bulk 80-105 lbs. 53.00-80.00; bulk 100-125 lb. holstein bulls 90.00-98.00, few 100.00-111.00; bulk 80-90 lbs. 54.00-80.00.

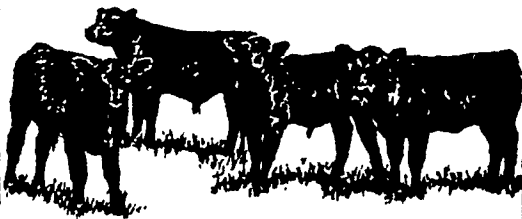
SPECIAL GRADED FEEDER CATTLE SALE

FRIDAY, FEBRUARY 5

11:00 A.M.

400 HEAD

All Breeds - All Weights
Prime - Choice - Good Grade
Sold in lots of 10 or more
Graded by Jim Anderson - USDA



LANCASTER STOCKYARDS WEEKLY SALES

SLAUGHTER SALES — MON. & WED. 10:00 A.M.
VEALERS, LAMBS, HOGS — MON. & WED. 11:30 A.M.
HOG AUCTION — SATURDAY 9:30 A.M.
STOCKER & FEEDER — FRIDAY 11:00 A.M.

NEXT FEEDER PIG SALE — FEB. 2

EQUIPPED TO RECEIVE YOUR LIVESTOCK
24 HOURS A DAY, 365 DAYS A YEAR.

PRIVATE TREATY DAILY
LANCASTER STOCKYARDS, INC.

(717) 394-2611

HAY, STRAW & CORN SALE

Every Friday at 12 Noon

GREEN DRAGON MARKET & AUCTION

RD No. 4 Ephrata, Pa. 717-733-2334
1 mile North of Ephrata on N. State St.
Out of State Buyers - Cash or Certified Check Only.

NEW HOLLAND The Action Auction AUCTIONS

make the difference in auctions!
NEW HOLLAND makes the difference in marketing livestock!

MONDAY'S AUCTION
8:00 A.M. - Fat Hogs
10:00 A.M. - Horse Sale
11:00 A.M. - Hay, Straw & Ear Corn
1:30 P.M. - Fat Steers, Bulls, Cows & Veal
WEDNESDAY'S AUCTION
12:00 Noon - Dairy Sale
1:30 P.M. - Feeder Pig Sale
THURSDAY'S AUCTION
11:00 A.M. - Beef Sale
Order of Sale, Bulls, Fat Steers, Cows, Veal
3:30 P.M. - Calf Sale

NEW HOLLAND SALES STABLES INC.

New Holland PA
Abram W. Diefenbach, Manager
Phone 717-354-4341



VINTAGE SALES STABLES, INC.

Sale Every Tuesday & Friday
11 A.M.

Slaughter Cattle Auction -
Steers, Bulls, Heifers, Cows,
Feeder Cattle.

(no calves or sheep Friday)
Get calves in early. We start to grade and weigh at 2:30.

Sale Every Wednesday &
Saturday - 9 A.M.
Hog Sale

Starting Friday, October 15 for
Hay and Straw Sale.

4 possum belted trailers
available for long distance
and local hauling

Business Phone
717-768-8204

Home Phone
215-458-5060

L. Robert Frame, Manager
Box 100 Paradise, PA
10 miles East of Lancaster on Rt. 30

B&R CATTLE CO.

RD1, Marietta, PA
17547
Office Phone:
(717) 653-8164
Specializing in
Stockers &
Feeders
JOHN BOWMAN
Ph: (717) 653-5728
RON RANCK
Ph: (717) 656-9849

LEBANON VALLEY LIVESTOCK MARKET, INC.

1 mile East of
Fredericksburg
along Route 22
PHONE:
JONESTOWN
865-2881

Sale every Tuesday
at 1:30 P.M. starting
with feeder cattle
and pigs.
Also Hay Sale
every Tuesday at
12:30.