

Adams meeting features poultry insect control

GETTYSBURG — Penn State Extension entomologist Clarence Collison will be the featured speaker at the Adams County Poultry Insect Control meeting Monday, Feb. 1.

Sponsored by the Adams County Extension Service, the meeting will be held at the Extension office and will begin at 7:30 p.m.

According to Extension agent John Schwartz, this will be an "informative program on poultry insect identification and control. Dr. Collison will discuss the latest techniques for controlling flies, hide beetles, northern fowl mite, lesser meal worms, and other parasites."

Russell wins maple producers award

FARM SHOW — Cleveland W. Russell, Rt. 1, Rome, was honored with the Award of Merit by the Pennsylvania Maple Producers Council. He accepted it at the association's annual meeting at the Pennsylvania Farm Show, last Thursday.

Russell has served as state director continuously since the Pennsylvania Maple Producers Council was formed in 1965. His cooperation on behalf of the State Council has included serving as key person at Farm Show and Ag Progress Days sales booths. He has hosted many maple tours at his modern sugar cabin each season. Russell regularly attends state council meetings and is a

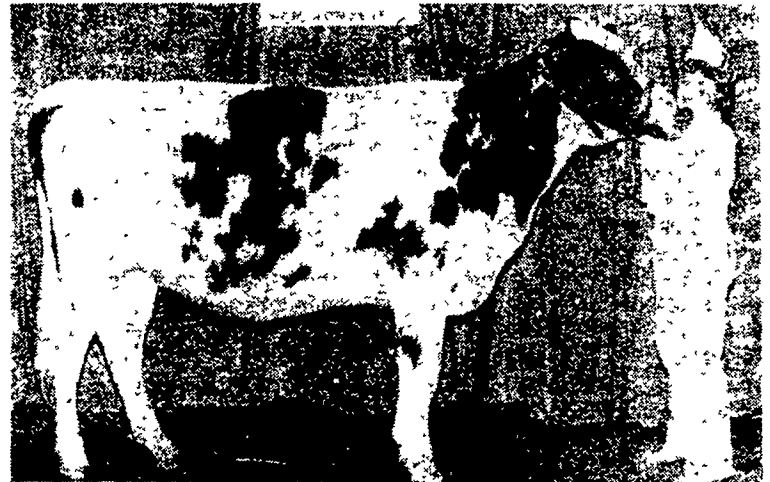
progressive leader active on committees.

Russell cooperated fully in founding of the Endless Mountains Maple Syrup Producers Association and has worked diligently over the years at the exhibit at the Farm Show. He attends every meeting and has assisted in the educational

program by reporting to membership via slide narrations on state and out-of-state tours.

A regular exhibitor at Farm Show, Russell has won many first awards over the years for his quality maple products. He has been a progressive leader in the area for promoting maple products and the industry.

Dairy highlights



Sherry Keefer is at the halter of Sycamore Meade SS Mary. The Millersburg 4-H'ers senior yearling was named reserve junior champion in the youth Ayrshire division.



Although his family milks Black and Whites, Mike Welsh's show string is made up of Brown Swiss. Welsh of East Berlin is at the halter of his youth junior champion, Welsh Pond Titan Princess, a junior calf.

PUBLIC SALE

FARM EQUIPMENT and METAL BLDG. Sinking Spring, Pa.

MONDAY, FEBRUARY 15 Starting 10 A.M.

ALL EQUIPMENT GOOD CONDITION

Farmall 504 fast hitch, Int. 454 WF w/2050 loader, Int. 1150 grinder HD PTO, John Deere 720 gas P.S. Live PTO Live Hyd., 3 pt. hitch, McCormick 312 trip plow, Int. 10' disc, M.F. 4 bot. 14" 3 pt. trip back plow, Dunham disc harrow 10' transport, Brillion 11' cultipacker, John Deere lime spreader LF 10, New Idea manure spreader, Int. 56 2 row corn planter, Ontario grain drill 16, John Deere sprayer 25A 3 pt., New Holland baler 268, New Holland 7' haybine, New Holland 256 bean rake (1 yr. old), Vicon fertilizer spreader, New Idea corn-picker, David Bradley stalk chopper, New McCurdy box & Running gear, Bale wagon, Box wagon drag unload w/motor, Kentucky horse drawn alfalfa drill, John Deere 3 section harrow, John Deere 25A combine, 3 Int. cylinders 2 way, New Holland 30' elevator, John Deere 25A combine w/motor, 300 gal. gas tank, 2 - 1200 bushels wire corncribs, 2 - C.I. water troughs, 8 rolls 32" high 6' fencing, 250 locust posts, 2 - 16' wood gates, fast hitch to 3 pt. adaptor.

BUILDING

44x84 Sheet metal Bldg. open one side. Bldg. to be taken down & removed at buyer's expense. Buyer to remove bldg. from premises by May 1st, 1982.

TERMS: All sales cash day of sale.

DIRECTIONS: 2 miles north of Sinking Spring, Pa., just off road to No Where, or at Berkshire Mall take Paper Mill Road. Sale behind former Van Reed Paper Mill. Look for sale signs.

Sale ordered by:
G.C. KLAHOLD & SON
RD#5
Sinking Spring, Pa.
Phone (215) 372-3476

Auctioneers:
Green Hill Auction
RD#1
Mohnton, Pa.
Phone (215) 678-3003
or (215) 856-5000

ATTENTION FARMERS AND DEALERS

Retiring, Liquidating or Reducing Inventory - Turn your assets to cash the auction way.

Let us talk to you with no obligation.

Expert Service, Low Rates

Ed Goodrich, Jr.

Goodrich Auction Service
Rt. 38 and 38B

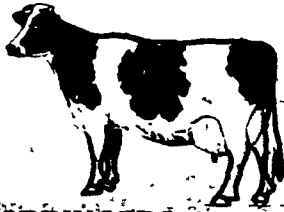
Newark Valley, NY 13811

607-642-8688

We sell anything, anytime, anywhere

Consignments To Our Regular Dairy Sale WEDNESDAY, JANUARY 27

HERD OF 30 HEAD



FRESH SPRINGERS, BALANCE IN ALL STAGES

Also

- * 1 Load Canadian Cows Consigned By Kelly Bowser.
 - * Wisconsin Cows Consigned By Dale Hostetter.
 - * 1 Load Purebred And Grade Holstein Cows Consigned By H.D. Matz.
 - * 1 Load Holstein Cows Consigned By Raymond Smucker.
 - * 1 Load Fresh Holstein Cows Consigned By Alfred Albright.
- New Holland Sales Stables, Inc.**
12 Miles East of Lancaster, Pa.
Just off Rt. 23, New Holland, Pa.
Abe Diefenbach, Mgr.
717-354-4341

Sale Reports

A public sale of cattle and machinery was held Jan. 16 by Frank and Leona Adams, 7 miles from Wyalusing and 5 miles from New Albany, Bradford Co. A large crowd attended

the sale despite the cold weather.

Prices included: hay wagons \$1,100 and \$1,125, Farmall MTA tractor \$1,175, transport disc \$1,500, grade Holstein \$825, Haybine \$800, Gehl unloading wagon \$875, Farmall H tractor \$600, and Int. 4-bottom plow #700 \$1075.

Jim Adriance was the auctioneer.

xxx

An auction of heavy equipment and oil and gas drilling equipment was held Jan. 15 by Penn Cal Contractors, Inc. 516 1/2 Dawson St., Kane, Bradford Co.

Some prices were CAT D-7F dozer \$46,500, Bucyrus Erie 50208L Spudder cable tool \$25,000, Michigan loader \$4900, Dynahoe #190 diesel engine \$3500, Army-style 6x6 dump truck \$2,800 and Wilderness camping trailer 21' Tandem Axle \$2,600.

Sale managed by Dick Grittenden Auction Co.

xxx

A public sale of a dairy farm and antiques was held Jan. 16 for the

Mahlon M. Weaver Estate on Red Well Road about 5 miles south of New Holland, Lancaster Co. There were 264 registered buyers present for the sale held in a heated tent.

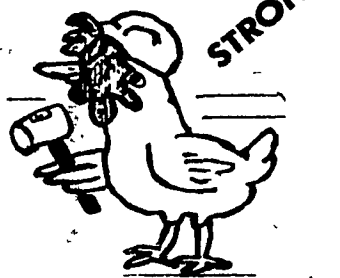
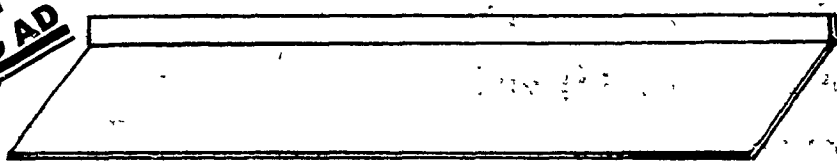
The 84-acre limestone dairy farm with a 2 1/2 story, 15-room double stone-block house, frame bank barn with 30 stanchions, loafing shed, corn shed and tobacco shed was sold to Stephen K. and Lydia S. Esh of Ronks for \$372,000.

Other prices were: old wardrobe w/drawers \$3,900, Bowers sideboard \$1,000, slant top desk \$910, blanket chest \$320, flour chest \$260, washstand \$175, green class pitcher set \$109, View Master \$67.50, kerosene lamp \$77, high chair \$50, Glaue Zimmerman Family book \$60, gravy boat \$20, mantel clock \$55, clothes tree \$50, extension table \$130, and 6 decorated chairs \$34 each.

Auctioneers were Nevil Z. Martin and Lewis R. Groff.

NEW! FROM HEN-MASTER

MONEY SAVING AD



QUALITY HI-DENSITY PLASTIC SCRAPER BOARDS

— COMPARE THESE FEATURES —

- UNBELIEVABLY STRONG
- WILL NOT RUST OR CRACK
- FITS ALL MAJOR CAGE SYSTEMS
- AVAILABLE IN 8' AND 10' LENGTHS
- SAVE, BECAUSE YOU'RE BUYING FACTORY DIRECT!
- NO DEALER MARK-UP, ECONOMICALLY PRICED. DIRECT TO YOU!

FOR FREE INFORMATION CALL OR WRITE TODAY

HEN-MASTER

2313 DEBRA DRIVE
EAST PETERSBURG, PA 17520

(717) 569-4386

KEEP THIS AD

WORTH \$ ONE DOLLAR \$ OFF EACH BOARD PURCHASED NOW THROUGH JUNE 1, 1982 (MINIMUM 500 OR MORE BOARDS)