

New method determines sunflower staging



Potter County DHIA Report

November 1981

OWNER	BREED	NO. COWS	% DAYS IN MILK	LBS. MILK	LBS. FAT
Ivan Smoker & Sons	RH	98.5	86.1	20,832	770
Ivan Kibbe Jr	RH	89.1	91.5	18,669	762
Jack Thomas	Mixed	47.1	87.9	18,589	689
John C. Traub	R&GH	39.1	85.1	19,806	683
Snyder Farms	R&GH	22.0	91.1	17,273	680
Jack Knowlton	R&GH	52.9	91.3	18,895	674
Jay N Heisey	RH	72.0	86.1	18,655	659
Maynard Sherman	GH	47.9	86.1	18,838	659
Fred Knowlton	RH	36.3	88.6	18,881	656
W. H. Currier	RH	54.0	85.9	17,696	647
Kevin Risser	Mixed	56.0	85.8	18,287	642
S. Michael Greene	R&GH	21.9	89.9	17,664	641
William Butler	GH	68.6	87.4	17,541	641
Kenneth Lambert	R&GH	49.6	90.5	16,024	640
Paul Buck	RH	24.9	88.6	16,169	639
George Barker	RH	61.6	86.3	16,664	628
Guy Dunn	RH	47.4	82.6	15,931	623
Floyd Long	RH	38.4	90.7	16,605	621
Alvin Miller & Son	RH	98.9	88.5	15,677	619
Robert Francis	RH	39.6	84.1	15,522	615
Robert F. Greene Jr	RH	30.2	89.2	16,874	607
R. Fowler & Sons	R&GH	78.4	85.3	17,412	607
Keith Musser	GH	45.8	88.2	16,991	603

OWNER NAME OR NO.	BREED	AGE	DAYS IN MILK	LBS. MILK	% FAT	LBS. FAT
Paul Buck, Ulysses						
Maple 2	H	5-3	305	19,575	4.1	796
Jack Knowlton, Coudersport						
Hazel	H	4-2	305	21,267	3.6	771
Roma	H	3-11	305	22,209	3.5	767
Alvin B. Miller & Son, Ulysses						
No. 259	H	4-2	305	23,616	4.0	934
George Barker, Ulysses						
Cricket	H	6-7	305	24,088	4.1	980
Molly	H	8-9	305	24,571	3.8	933
Bouron	H	3-3	305	18,229	4.1	755
Maynard Sherman, Westfield						
Bert	H	4-2	305	25,260	3.1	795
Ivan Smoker & Sons, Genesee						
Connie	H	10-9	305	21,014	3.8	790
Dart	H	7-2	305	25,867	4.1	1054
Suzette	H	6-10	305	23,724	4.3	1027
Brett	H	5-1	305	22,149	3.7	827
Bethann	H	5-5	293	23,052	3.9	903
Fantasy	H	5-0	305	25,994	3.2	840

ATLANTA, Ga. — There is currently no standard accurate method of determining the developmental stage of a sunflower plant.

A new staging method has recently been developed at North Dakota State University, according to Albert Schneider, NDSU agronomist. Schneider points out that accurate determination of the growth stage of a plant is important for proper pesticide and herbicide application and for determining yield losses due to hail.

"We run into problems in telling someone when to apply an insecticide or a herbicide or describing a certain stage of growth," he said. "More accuracy is needed to avoid ineffective

application of chemicals which may even damage a plant when applied at the wrong stage."

Accurate staging is also important to both insurance adjusters and producers since the amount of loss depends on the stage at which the hailstorm occurred, and the insurance companies pay accordingly, says Schneider.

The new staging method involves dividing sunflower plant development into either vegetative or reproductive stages. The vegetative stage is determined by counting the number of true leaves on the plant four centimeters or longer while the reproductive stage by looking at the development of the flower.

"A plant could be a foot and a half tall and have six leaves or 20

leaves," Schneider said. "The vegetative stages could be quite different though."

He pointed out that a length standard for the leaves had to be set to avoid confusing situations in which one person might count only the big leaves while another would count all of the small leaves surrounding the bud.

"Currently there is much confusion as to what is meant by 50 percent bloom for example," Schneider said. "One person might describe 50 percent bloom as when the plants have half of their yellow ray flowers showing while another might describe it as when 50 percent of the area in the head has flowered. Between the two there may be a week or 10 days difference. In the case of a hailstorm, for example, the amount of insurance paid would be quite different."

The new staging method is simple and more accurate than current methods, commented Schneider. "People will try it and hopefully they'll use it."

Schneider's research was sponsored by a grant from the National Crop Insurance Association.

Betsy	H	2-11	305	24,741	3.4	834
Janice	H	2-1	305	20,529	3.8	776
Lois	H	2-1	305	21,081	4.0	834
Robert E. Greene Jr., Roulette						
Charmer	H	6-5	305	22,726	3.5	793
Judy W. Breeden, Coudersport						
No. 63	H	5-1	305	21,288	3.9	829
Hy Grade Farm, Genesee						
Jenny	H	5-10	305	18,461	4.5	837
Snyder Farms, Westfield						
Generos	H	6-1	305	20,942	4.2	887
Beauty	H	4-3	305	18,493	4.1	763
S. Michael Greene, Roulette						
Farrah	H	4-3	305	22,242	3.8	839
Dan Tice, Coudersport						
Judy	H	8-11	305	20,843	3.9	822
Jay N. Heisey, Rexville, N Y						
C. Alma	H	8-0	305	22,097	3.5	768
Ramar	H	5-9	305	25,226	3.2	815
Lass	H	3-8	305	24,239	3.5	837
Kat	H	2-11	305	21,283	3.6	764
Dale Hoffman, Millport						
Quest	H	9-2	305	19,908	3.8	759
John C. Traub, Galeton						
Ellen	H	6-5	302	24,464	3.3	817
Mae	H	5-8	305	23,745	3.3	786
Kenneth Lambert, Ulysses						
Patsy	H	5-10	305	22,282	3.9	865
No. 372	H	3-4	305	18,160	4.5	822

This publication is available in microform.

University Microfilms International

300 North Zeeb Road
Dept. PR
Ann Arbor, MI 48106
USA

30-32 Mortimer Street
Dept. PR
London W1N 7RA
England

ELECTRICAL CONTRACTING AGRICULTURAL

RESIDENTIAL • INDUSTRIAL
- 24 HOUR EMERGENCY SERVICE
- STANDBY GENERATORS SALES & SERVICE
- 40' BUCKET TRUCK
- BLOWN CELLULOSE INSULATION

Hawthorne Electric, Inc.
Since 1952
CALL (717) 653-2068
Rt. 230 W. Mount Joy, Pa. 17552

HIGH PRESSURE WASHING AND DISINFECTING POULTRY HOUSES AND VEAL PENS

MAYNARD L. BEITZEL
Witmer, PA 17585
717-392-7227

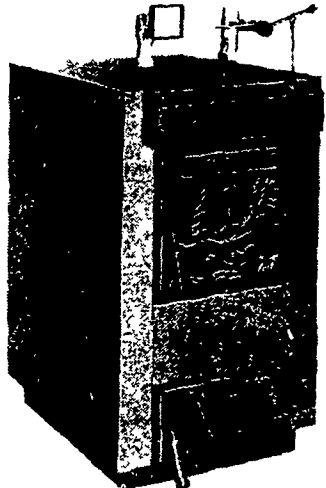
TIMBER EZE

Ingenious Wood/Coal Boilers

NOW AVAILABLE...

WOOD AND COAL BURNING BOILERS DESIGNED TO TIE INTO ANY HOT WATER HEATING SYSTEM

This means you can now heat your entire home with wood or coal and since this is an add-on boiler, you can use your present energy source — gas, electric, oil or solar, as desired, when not using wood or coal — the less costly fuels during frigid weather. The Timber-Eze boilers are engineered using space age technology for squeezing maximum BTU's of energy from solid fuels utilized in the heat chamber.



- Non-jarring intermeshing heavy duty cast iron grates
- Automatic dual draft system
- Designed and built to comply with the ASME Code
- Firebrick lined
- Extremely heavy construction
- Insulated jacket
- 12 and 19 gallon reservoir
- 1½" Fiberglass insulation 3 sides.
- Wine color finish

BE INDEPENDENT OF UTILITY INCREASES — BUILD UP A SAVINGS ACCOUNT BY OWNING A TIMBER EZE

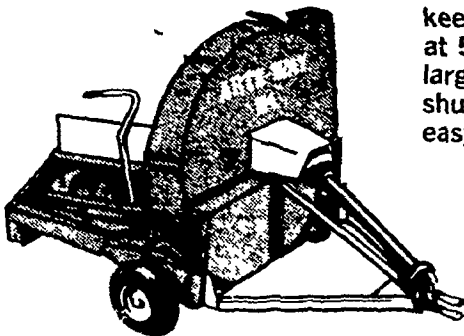
A.R. FLAUD SALES

Timbereze Distributor & Sales

RD #2, Rock Road, Honey Brook, Pa. 19344
For More Information Call 215-273-3211
DEALER INQUIRIES WELCOME

MOVE UP TO 120 TONS OF CORN SILAGE AN HOUR

ARTS-WAY 154 Forage Blower



Its 54" fan and specially designed flow system keeps material moving evenly into the silo. Operates at 540 rpm, with optional heavy-duty PTO shaft for large tractors. Big 12-inch auger has single-lever shutoff control with brake. Angled hopper makes it easy for wagons to reach unloading position.

Ask Us For Our Low Competitive Price

AREA REPRESENTATIVE
DAVID D. DEITRICH PHONE:
Rte. 5, Box 758 (703) 667-3787
Winchester, VA. 22601 (703) 667-0363

GREENWOOD, DE
Delridge Supply, Inc.
302-349-4327

ALEXANDRIA, PA.
Clapper Farm Equip.
814-669-4465

SHIPPENSBURG, PA.
Witmer Impl.
717-532-6139

WAYNESBORO, PA
B Equipment, Inc.
717-762-3193

SOMERSET, PA.
Grove Equip. Sales
814-445-6306

RISING SUN, MD.
Ben Haines
301-658-5359