

Longwood Gardens

(Continued from Page B18)

The Gardens also house an idea garden. Here you can see masses of roses, annual and perennial flowers, herbs, fruits, and vegetables. Look for plants and growing techniques to use in your own garden.

Plan to spend a great portion of the day at this Garden paradise and wear comfortable walking shoes. Most of all, don't forget your camera. And may I suggest

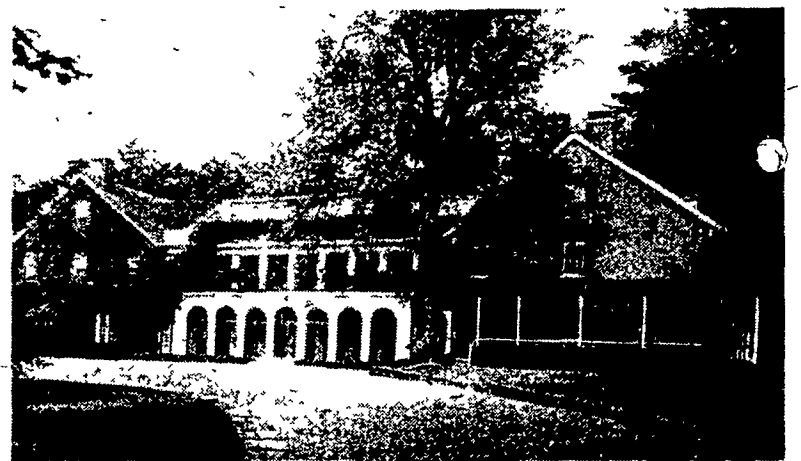
viewing the free four minute slide presentation located to your right as you walk through the entrance to the first building. This introduction will show you a map and will be an invaluable guide for making sure you see all the Gardens have to offer.

The Gardens are open from 9 a.m. to 6 p.m., parts of the year and 9 a.m. to 10 p.m. most of the

year. Admission for children ages 6 to 14 is only \$1, and children under age 5 get in free.

For special events throughout the year, you can call 215-388-6741.

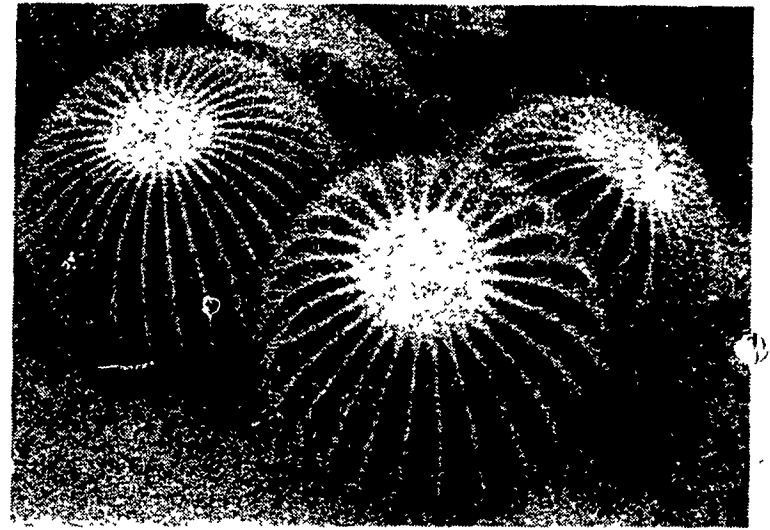
I hope you enjoy your trip to Longwood Gardens as much as I did, and I am sure you will come home saying, "It took my breath away!"



The Pierce-du Pont house at Longwood Gardens features the historic Pierce wing on the right, an addition by du Pont on the left, and a connecting conservatory. The house is open for view Spring through Fall.



The Christmas display at Longwood always features an enormous tree, center, and an abundant supply of poinsettias. In the foreground is a reflecting pool.



If these cactus look familiar, it could be because they are stone cactuses—a common house cactus. However, your arms could not reach around these sharp beauties; most plants as we know them are grown to extremes at the Gardens.

Thanks and Congratulations to Ken Zurin & Family

of Salunga, PA

on their newly
completed,
60'x126'x16'
Pole Building
for machinery
storage and
equipment
repair.



COVERED WITH
REYNOLDS
ROOFING
&
SIDING.



— FEATURING —

- 60' CLEAR SPAN TRUSSES, 4' ON CENTER, WHICH ALLOWS FOR HEAVIER LIVE LOAD.
- 29 GAUGE PAINTED STEEL SIDING

BUILT BY:



DESIGNERS & BUILDERS of SYSTEMS

RD 4 EPHRATA, PA 17522
Located in Farmersville
Phone 717-354-4271

For All Your
Farm Building
Needs, Large or
Small, Let Our
Experience
Work For You

Quality
Stanfield
Product

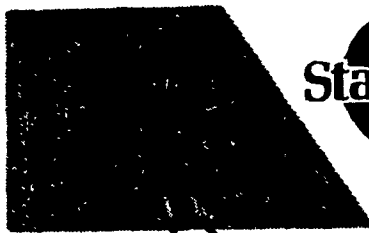
CREEP FEEDER



Includes:

- Large open feed pan to simulate floor feeding.
- Sturdy aluminum bracket for quick feeder in-and-out
- Generous 1 1/4 gallon hopper capacity.

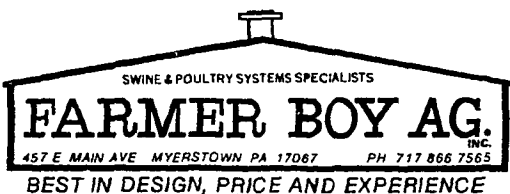
Not just another creep feeder! A farm tested natural way to start two and three day-old pigs on solid feed. Pigs learn to eat creep feed before weaning. So you wean faster and pigs do better under less stress.



Quality
Stanfield
Product

HEAT PADS

For Farrowing Crates And Nursery
With Stanfield Surface, Draft Barrier
Cleats, Twin Cords.



457 E. MAIN AVE. MYERSTOWN PA 17087 PH 717 866 7565
BEST IN DESIGN, PRICE AND EXPERIENCE