

'Ag-stravaganza'

(Continued from Page A1)

1982 Farm Show to our family farmers and agribusinesses. They are the true core of our efforts at economic development for the commonwealth," he added.

Although the complex will be punctuated with sounds of bawling cattle and bleating sheep, country music fanciers will get a pleasant earfull Monday evening when the First Lady of Country Music, Tammy Wynette sings sweet and low in the main arena.

Prior to Wynette's concert, 10 commodity queens will make their singing debut.

In addition to 240 commercial exhibits, the Farm Show will feature 28 departments in which livestock, crops, farm products and other exhibits will be judged.

There should be feathers galore as more than 2,000 poultry entries are exhibited throughout the week.

Draft Horse judging kicks off on Monday, Jan. 11 at 9 a.m. This year's equine entries consist of 60 head of Belgians, 30 Percherons, 10 Clydesdales and more than 50 teams of horse and ponies for the pulling contests.

Sheep fanciers will have a big day on Sunday, Jan. 10 at 1 p.m. when more than 300 sheep entries vie for premiums and ribbons. Additional sheep activities are featured Wednesday, Jan. 13 at 1 p.m. with the junior lamb showmanship contest. At 6 p.m., Wednesday, the popular Pennsylvania Sheep to Shawl Contest is held in the small arena. Eight teams shear a sheep, spin the wool

and weave it into a shawl, with shawls auctioned to the crowd at 9 p.m.

Show canes and crops are getting an early workout today as swine breeders compete for top prizes even before Governor Thornburgh gives his blessing to the annual event. In addition to 200 head of Junior Market Swine, visitors can get a look at eight different swine breeds.

The six dairy breeds, Ayrshire, Jersey, Guernsey, Brown Swiss, Holstein and Milking Shorthorn begin their parade for prizes on Tuesday, Jan. 12 at 8 a.m.

Beef cattle judging begins with Angus cattle at 9 a.m. on Thursday.

Friday features the traditional, exciting junior livestock sales. The junior swine sale kicks off to the auctioneers' chants at 11 a.m. in the small arena, followed by the carcass and lamb sale at 1 p.m. and prestigious junior steer sale at 2 p.m.

Commercial exhibitors from the state and from as far away as California will fill the four-acre main exhibition hall with more than \$25 million of farm machinery.

To better accommodate Farm Show visitors, the displays have been grouped together by category rather than being spread throughout the main exhibition hall as in previous years. Farm organizations and state agency displays can also be found in the main hall.

While viewing the various

visitors can sample quality Pennsylvania farm products at booths sponsored by State commodity associations. These booths and several other food booths sponsored by Harrisburg area churches can be found along the east wall of the building.

When the Show ends on Saturday, Jan. 15, exhibitors will have

walked off with more than \$127,000 in premiums.

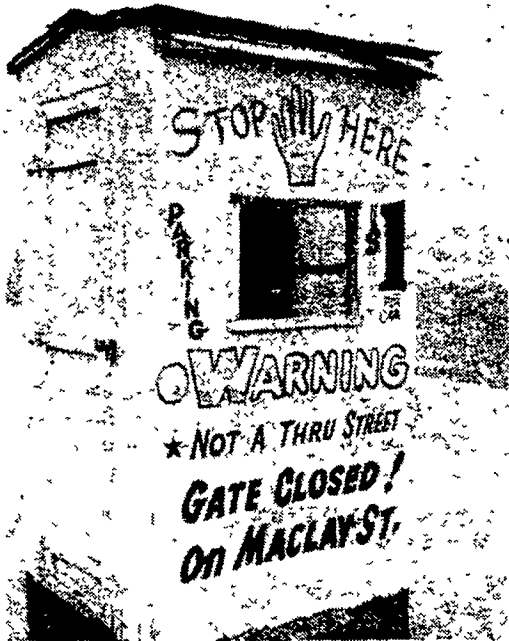
Approximately 60 surrounding acres will be designated for parking which costs \$2 per car. Handicapped parking is available at the Maclay Street Entrance to the main Exhibition Building, and on the west side of the large Arena near the lower level entrance.

And be sure to stop by the Lancaster Farming booth located

near the entrance to the small arena on the main exhibition floor. Our exhibit area, Number 274, is right back where it was in 1981, so we hope you come by and say hello.

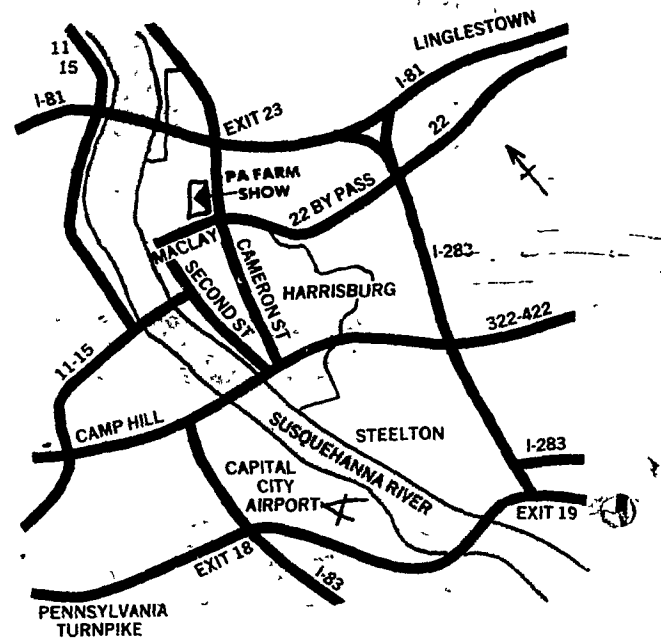
Listen to the giant and join the thousands of visitors who each year make the Pennsylvania Farm Show a great place to learn and who find wholesome family entertainment under one roof.

It is indeed — Growing Better.



Even the Farm Show didn't turn back inflation this year. Visitors must now pay \$2 before parking their car.

The road to Farm Show

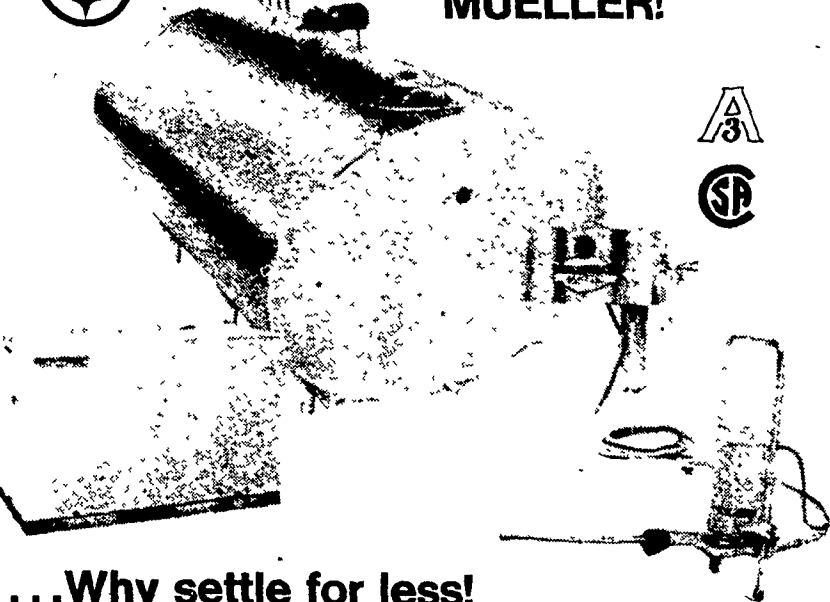


MUELLER Milk Coolers®

1. Free Hot Water
2. HiPerForm Cooling
3. Mueller-Matic Washing



... only from MUELLER!



...Why settle for less!

FOR MORE INFORMATION, CONTACT:

RUFUS BRUBAKER REFRIGERATION

614 Penryn Rd. Manheim, PA 17545

717-665-3525

- Authorized Mueller Dealer • Dependable 24 Hr. Service
- Mojonnier Parts Available

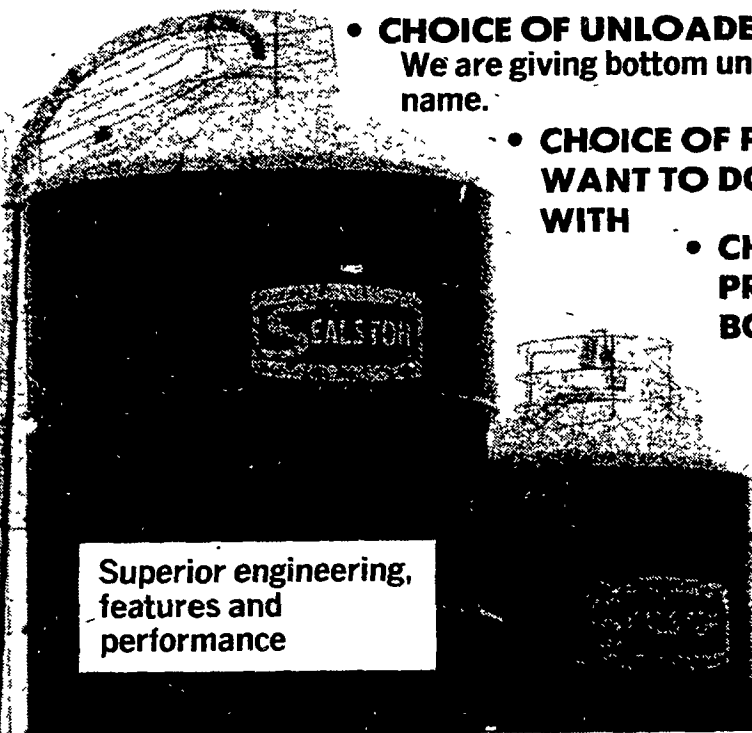
USED TANKS AVAILABLE:

- 500, 600, 800, 1,250 & 1,500 Gal. Mueller Tanks
- 300 Gal. Mojonnier
- 500 Gal. DeLaval
- 500 Gal. Mojonnier
- 300 Gal. Girton
- 400 Gal. Sunset



Sealstor has made the glass fused to steel silo business competitive.

—It's Your Choice—



Superior engineering, features and performance

- CHOICE OF UNLOADERS: We are giving bottom unloaders a good name.
- CHOICE OF PEOPLE YOU WANT TO DO BUSINESS WITH
- CHOICE OF LEASING PROGRAMS: FMC or BORG WARNER

Come see us and compare at the Farm Show - Dairy Barn # 39-41 next to Pa. Holstein Assoc.

The wisest farmers are investing in 'The Efficient System'

We Specialize In Converting Other Steel Silo Structures To Laidig Bottom Unloaders

ROSKAMP ROLLER MILLS AND FEED PROCESSING EQUIPMENT

SUPREME AUTOMATIC FEEDING EQUIPMENT. Batch mixers, conveyors, blowers and feeders. SUPREME LIQUID MANURE PUMPS

Let Sealstor Satisfy Your Storage Needs In 1982

PENN DUTCH FARM SYSTEMS, INC.

1730 Highway 72 North Lebanon, PA 17042

717-273-9324

Please Clip & Mail Coupon to: I

PENN DUTCH FARM SYSTEMS, INC. LF 1/9
1730 Highway 72 North, Lebanon, Pa. 17042

I am interested in:

<input type="checkbox"/> High Moisture Corn Storage	<input type="checkbox"/> Haylage or Corn Silage Storage
<input type="checkbox"/> Liquid Manure Storage	<input type="checkbox"/> Replacing my old or broken bottom unloader with the Laidig
<input type="checkbox"/> Please add my name to your mailing list	<input type="checkbox"/> Laidig 43 Jr. Grain Conversion

NAME _____

ADDRESS _____

CITY _____ STATE _____ ZIP _____

TELEPHONE (including area code) _____

NO. OF BEEF _____ DAIRY _____ HOGS _____