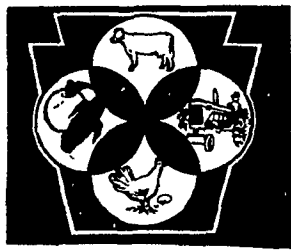


Red Wing Farm

(Continued from Page A21)



Eggs produced by other contracted producers are also brought to the grader.

All feed is manufactured on the premises with their own mix mill. Rations are formulated by the Yorgey's as well as checked for

protein content every three months. Until recently, the Yorgeys also were roasting their own soybeans for feed but because of equipment failure are now buying supplement. Son, Joel, is field manager and in charge of feed and grain. Son Mark is manager of egg sales while Gordon is general manager. The Yorgeys also have three other children, two sons and one daughter.

Red Wing Farm cultivates about three hundred acres, raising corn and soybeans. They also remodeled an old barn two years ago and fatten between 900 to 1,000 market hogs per year in it. A few steers also are fattened, mostly for the family's use.

Finding the Yorgey's exhibit at the 66th annual Farm Show should not be a difficult task — just look for the ribbons and Red Wing Farm.



One of the keys to producing blue-ribbon winning eggs is quality-controlled feeding. Here Gordon checks the mix mill controls.

Does your Barn Cleaner have a chain this strong?

Remember the tractor picture we used to demonstrate how strong our 5/8" barn cleaner really is? Well, we still use tough, durable chain links in our barn cleaners to assure years of highly dependable barn cleaning. Our chain has the toughest link around. No bolts or pins to shear... no hooks to straighten or break.

Smooth-running oval design offers more flex around the corners. Less power is needed. No hooks or crevices to trap corrosive acids. Dependable steel paddles are welded right to the links for long life. No



pins or bolts to loosen. Steady, double-tooth sprocket drive. We use two teeth to drive the outside of the link for steadier drive, reduced wear. Easy chain length adjustment with forged connector links

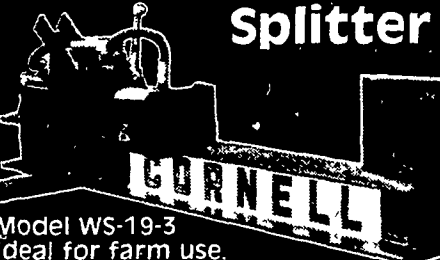


We have conversion kits, too! Give your present barn cleaner a new lease on life. Our replacement parts are adaptable to almost any make barn cleaner.

Look into highly dependable barn cleaning. Call your nearby Cornell dealer or give us a call: (717) 869-1227



Introducing the new Cornell 19" 3-Point Hitch Splitter



Model WS-19-3
Ideal for farm use.
Attaches to Category I tractors in seconds.

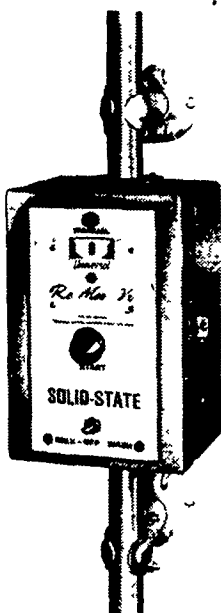
CORNELL MFG., INC.
Dept. LF Box 18 RD 2 Laceyville, PA 18623

UPDATE YOUR MILKING SYSTEM NOW

For added performance and profit, here are some options to consider.

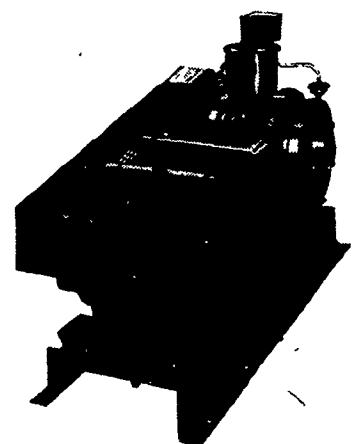
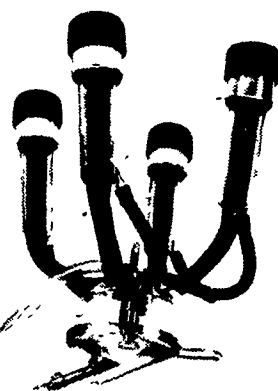
UNIVERSAL MILKER TAKEOFF

- can actually increase production by hundreds of pounds per cow
- dual sensing control assures no over- or undermilking (both are major causes of mastitis)
- automatically shuts off vacuum when cow is milked out
- available for parlor installations (model shown) and now for around the barn pipeline systems



MILKER UNITS

- large capacity, scientifically balanced designs for improved udder adaptability
- see-through claw lets you check milk flow
- built-in air bleed reduces vacuum fluctuations and gently elevates milk

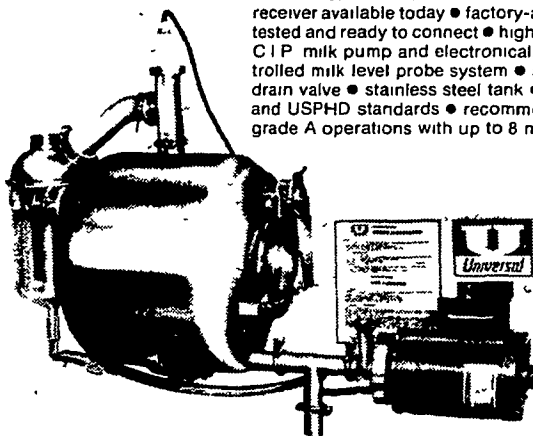


VACUUM PUMPS

- the right pump can increase the efficiency of your whole system
- available in 3, 5, or 7 1/2 hp
- easily matched to the vacuum requirement of your system

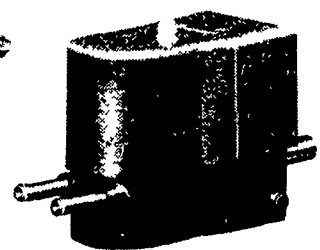
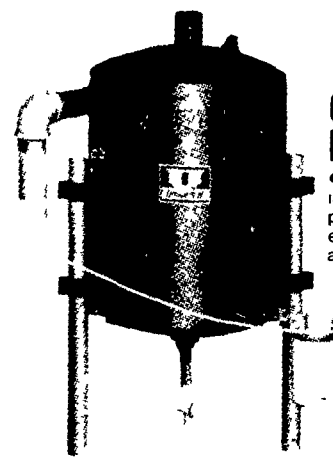
SUPER 1050 PANEL RECEIVER

- the most efficient and advanced panel receiver available today
- factory-assembled, tested and ready to connect
- high capacity CIP milk pump and electronically controlled milk level probe system
- automatic drain valve
- stainless steel tank
- meets 3 A and USPHD standards
- recommended for grade A operations with up to 8 milker units



OIL RECLAIMER

- pays for itself in oil savings
- increased pump efficiency and longer pump life
- baffled to retain oil more efficiently and to entrap more dust and dirt



24-VOLT SOLID STATE PULSATOR

- solid-state reliability
- never needs adjustment
- water- and air-tight protects against dust, dirt and moisture
- provides individual pulsation control for a single milker unit
- built-in circuit breaker

NO NEED TO BUY, LEASE IT!

No big initial investment when you lease through Teimark, Agri-Lease. Check Agway for details.

Agri-Lease

INSTALLED AND SERVICED BY AGWAY

All Agway Installation and Service people are well trained, well equipped, and backed by complete parts inventories for fast repairs.

For details, contact your Agway Farm Systems salesperson, Universal dealer or local Agway store.

AGWAY

answers your needs

