



Edward Rick

cows and calves, along with breeding and market hogs. He has served on the recreation and citrus committees.

He has served as chapter treasurer and has won awards in ag mechanics, dairy production and swine production.

He has participated in dairy, land and meats judging, as well as the small engines contest and the PEEC Leadership Training.

He plans to increase and improve his dairy herd, as well as his father's herd.

Among his hobbies are hunting, riding and cutting firewood.

Larry Shelmire
Upper Bucks Tech Chapter
Quakertown Community

Larry Shelmire, 17, is the son of Paul C. and Eva Shelmire Jr.

His projects in the FFA have been breeding and finishing beef, breeding and market swine and field crops.

His committee memberships have been in the areas of wood cutting, recreation and chain calf.

He has held the office of chapter chaplain.

He has won awards in swine production, crop production, ag mechanics, soil and water management and tractor driving.



Larry Shelmire

Among his activities have been showing at the Farm and Home Show, State Farm Show and participating in small engine contest, land judging, tractor driving contest and the FFA Quiz Bowl contest.

He plans to engage in field cropping.



Johanna Graf
Middle Bucks Chapter
William Tennent High

Johanna Graf, the 17-year-old daughter of Robert and Hilda Graf, 441 Hopwood Dr., Warminster, has served in both the offices of vice president and president of her chapter.

Among her many activities have been greenhouse contest, Bucks Co. Farm and Home Show, Philadelphia Junior Flower Show, area horticulture contest, State Farm Show, land judging contest, public speaking, parliamentary procedure, demonstration team, Philadelphia Harvest Show, state floriculture and national floriculture.

Her committee assignments have included roller skating, field trip, citrus sale and other fund raisers and banquet. She has served as chairperson on many of these committees.

In addition to her chapter offices, she serves as Southeastern FFA president.

She has won proficiency awards in floriculture and ornamental horticulture.

Other activities in which she participates are soccer, St. John's Lutheran Church Youth Group, spring track and field hockey.

She would like to either open her own greenhouse operation or go on to college and study animal husbandry to become a veterinary assistant.

Her hobbies are soccer, motorcycle riding, hiking and horseback riding.

Centre County

Edward Houtz
Bellefonte Chapter
Bellefonte High School

Edward J. Houtz, son of Ronald and Dotty Houtz, R4, Bellefonte, is president of his FFA chapter.

His other chapter offices include chaplain and sentinel.

His projects in FFA have been breeding swine, turkey, dairy calf and cow and corn silage.

Among his committee posts have been Greenhand initiation, banquet chairman and livestock ring.

He received a county gold award.



Edward Houtz

in project book competition and a seventh place in county tractor driving. He showed the senior and breed champion Jersey cow at the District Dairy Show.

He has been a two-year wrestling team member and a two-year member of the football team.

A 10-year member of 4-H, his projects have been market hogs and dairy. In 1980 he showed the reserve champion Jersey cow at the County 4-H Show and followed in 1981 with the senior and breed champion cow.

His future centers on dairy farming.

He enjoys working with animals.

Michael J. Ulmer
Bellefonte Chapter
Bellefonte High School

Michael J. Ulmer, 19, is the son of Bruce and Nancy Ulmer, R2, Bellefonte.

His projects while in FFA included five acres of corn and dairy cows and heifers.

He served on the Greenhand initiation committee, along with the banquet committee and the livestock ring group.



Michael J. Ulmer

Other projects were the repainting of a hay rake and the building of a welding table.

He served as chapter vice president in 1980-81.

Among his awards were those in dairy production, welding, ag mechanics, scholarship, corn yield and county tractor driving.

He is a member of the Bellefonte Chapter of the Pennsylvania Young Farmers.

Dairy farming or ag mechanics are in his future plans.

He likes to fix up old cars and ride motorcycle.

Michael Dilliard
Penns Valley Chapter
Penns Valley High

Michael Dilliard, son of Mr. and Mrs. Lee S. Dilliard, R1, Spring Mills, is serving as president of his FFA chapter.

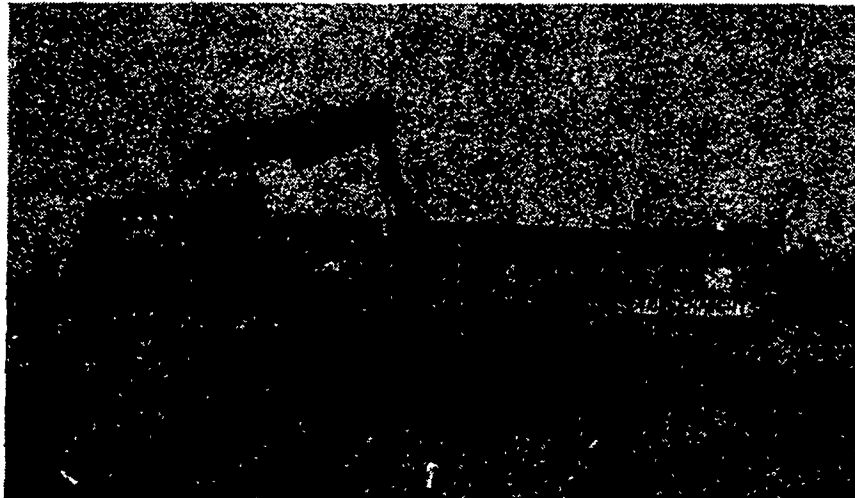
His other FFA offices have been chapter chaplain and vice president.

His major projects were dairy herd and calves.

Among his committee assignments have been Junior Breed

(Turn to Page D28)

You Can Depend On A KNIGHT Manure Spreader



7 Different Models - Sizes Ranging
from 180 Bushels to 600 Bushels Capacity

FEATURING

- ★ Durable Long Life Construction
- ★ Rust Resistant Copper Bearing Sides And Bottom
- ★ Heavy Auger Style Beaters With Alloyed Steel "Ripper" Teeth
- ★ Low Profile

DISTRIBUTED
BY:

**TODD FARM
EQUIPMENT, INC.**
HAGERSTOWN, MD. - CHESAPEAKE, VA.

SEE YOUR LOCAL KNIGHT DEALER FOR MORE DETAILS

ARNETT'S GARAGE

Hagerstown, Maryland

B EQUIPMENT, INC.

Waynesboro, Pa.

BENCE'S FARM EQUIPMENT

Bedford, Pa.

BINKLEY & HURST BROS., INC.

Litz, Pa.

**COLUMBIA CROSS ROAD
EQUIPMENT, INC.**

Columbia Cross Roads, Pa.

D & R EQUIPMENT

Ringoes, NJ

DICKINSON FARM EQUIPMENT

Tunkhannock, Pa.

DILTS EQUIPMENT CO.

Marion Center, Pa.

THE FARMERS STORE

Harmony, Pa.

HOUGHTALING'S GARAGE

Middleburg Center, Pa.

S. JOHNSON HURFF

Monroeville, NJ

J & M MACHINERY CO.

Greensburg, Pa.

KINGS TOWN TRACTOR CO.

Chestertown, Md.

**LEBANON VALLEY
IMPLEMENT, INC.**

Richland, Pa.

LONG, INC.

Reedsville, Pa.

LONGENECKERS, INC.

Williamsburg, Pa.

**MONTROSE TRACTOR &
EQUIPMENT, INC.**

Montrose, Pa.

CLAIR J. MYERS

Thomasville, Pa.

**PETERMAN FARM
EQUIPMENT, INC.**

Carlisle, Pa.

REED BROS. EQUIPMENT

Columbus, NJ

**R.E. SMELTZER
EQUIPMENT CO., INC.**

Centre Hall, Pa.

SOMERSET FARMERS SUPPLY

Somerset, Pa.

STOFFER BROS. INC.

Chambersburg, Pa.

SWOPE & BASHORE, INC.

Myerstown, Pa.

R.R. WALKER & SONS

Edinboro, Pa.

YOUNG FARM SUPPLY

Orangeville, Pa.