

(Continued from Page D15)

numerous FFA committees, he has served as chairman of those involving FFA Activities Week, Seed Sales, Using Officers Effectively, Recreation, Planning and conducting meetings and public relations.

He has received numerous awards, including fitting and showing, in various dairy shows, such as those at the Kutztown and Allentown Fairs, Oley Fair, Eastern Championship and Southeast District dairy shows.

Other awards have been in the areas of project book competition, public speaking, parliamentary procedure, interview and dairy and livestock judging.

He is a member of St. John's UCC Church, Eastern Berks 4-H and Pa. Jr. Holstein Assn.

He plans to continue in dairying.



Richard B. Savidge
Kutztown Area Chapter
Brandywine Heights High

Richard B. Savidge, son of Mr. and Mrs. Charles Savidge, Main Street, Mertztown, has conducted projects in dairy herd, beef finishing and field corn.

He has held the chapter offices of chaplain and secretary.

Among his many committee assignments have been as chairman of Volleyball, Cooperation with Other Chapters,

Window Exhibit, Community Programs, Keeping Chapter Records and Educational Trip.

Besides his chapter offices, he has served as county treasurer and is now county FFA president.

Among his major awards have been those in public speaking, tractor driving, dairy judging, land judging, interview and project book contest.

Also, he has received numerous dairying awards for competition at the Kutztown and Allentown Fairs, Southeast District Dairy Show, the All-American and FFA Activities Week at Penn State.

He attended the National Leadership Training Conference in Washington.

He was Star Greenhand of his chapter.

He is a member of Eastern Berks 4-H, his church group, Student Council and was involved in school play production.

He plans to continue working on the family farm.

Four-wheeling is among his main hobbies.



Rodney Hollenbach
Tulpehocken Chapter
Tulpehocken High

Rodney Hollenbach, 17, is the son of Leroy and Rose Hollenbach, RD, Bethel.

His projects during four years of FFA have included beef finishing and work experience on both a beef operation and dairy farm.

He has served on the farm safety and Food for America committees.

He has served as his chapter's reporter for two years.

He has won proficiency awards in beef finishing and ag mechanics and a silver in the state project book competition.

He plans to enter dairy farming in the future.



Nelson Beam
Twin Valley Chapter
Twin Valley High

The projects of Nelson Ray Beam, son of Omar and Ruth Beam, R2, Elverson, have included market and breeding swine, beef finishing, field corn and supervised work experience on the family farm.

His committee memberships have been in the areas of corn test plot, chicken barbecue and fund raising.

He has served as chapter sentinel and corn test plot chairman.

He has shown both the champion and the reserve champion of the

Berks County FFA Swine Show. He received the 1980 crop production award and the swine and livestock production awards.

He serves as president of the Chester County Beef Club and president and secretary of the Chester County Swine Club.

He also takes part in his church's youth group and plays softball in a local league.

Following college graduation, he plans to continue working on the family beef and swine farm and eventually have an operation of his own.

His hobbies are riding motorcycle, playing softball and hunting.



Wade Bernard
Twin Valley Chapter
Twin Valley High

The FFA offices of Wade Bernard, son of Mr. and Mrs. Charles F. Bernard, R2, Elverson, have included historian and vice president of his chapter and county vice president.

His projects have been hor-

ticulture, nursery, greenhouse and environmental center.

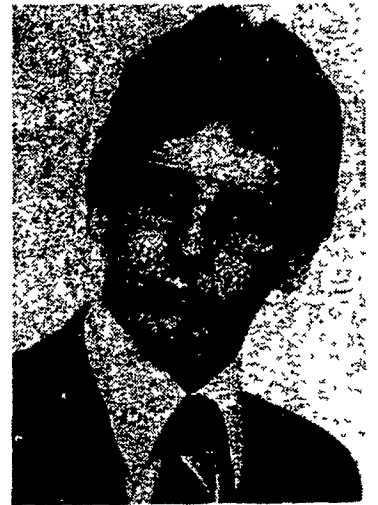
Among his committee assignments have been medical center, banquet, parliamentary procedure, landscaping, scholarship, recycling, seedling sale and chicken barbecue.

He has taken part in various fund raising events, including hoagie, citrus, tree seedling and raffle ticket sales.

His awards included firsts in county wildlife, forestry and agronomy and eighth and 13th in state wildlife and forestry.

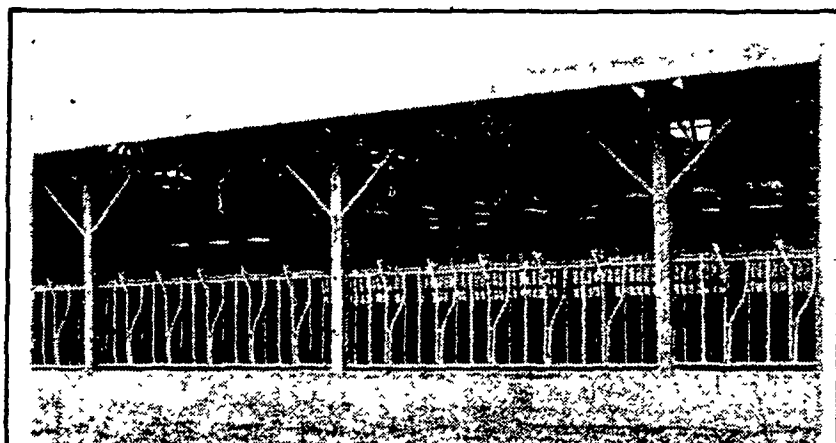
He attended the National Leadership Conference in Washington.

He will be attending Penn State and majoring in horticulture. He plans to manage and own a greenhouse.



Timothy Kurtz
Twin Valley Chapter
Twin Valley High

Timothy Kurtz, son of Calvin and Esther Mae Kurtz, R3, Elverson, (Turn to Page D18)




SELF LOCKING HEADGATES

Custom Built To Your Specifications



- ALSO AVAILABLE:**
- Farm Gates • Free Stalls • Hay Banks
 - Silage Banks • Stock Tilt Tables • Blocking
 - Chutes • Portable Loading Chutes • Squeeze Chutes • Head Gates • Custom Steel Products
 - Round Bale Feeders

FREY BROS. MANUFACTURING
R.D. #2, Quarryville, PA 17566
717-786-2146



If you have fat cattle or need feeders...

THINK NEW HOLLAND

BEEF SALES

MONDAY — 1:30 P.M.
THURSDAY — 11:00 A.M.

Sale Order - Fat Bulls, Steers, Stockers and Beef Cows
Veal Calves - 4:30 Thurs.

NEW HOLLAND SALES STABLES, INC.
Phone: 717-354-4341

Daily Market Report - Phone: 717-354-7288
Abe Diffenbach, Manager
Field Representatives
Alan Diffenbach 717-656-9806
Luke Eberly 215-267-6608




Machine Work
Welding &
Farm Supplies
Hardware

D.S. MACHINE SHOP

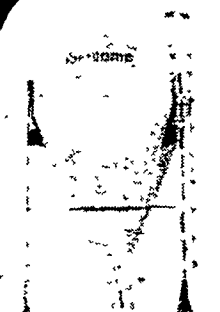
DAVID E. STOLTZFUS

3816 E. Newport Road
Gordonville, PA 17529
1 Mile East of Intercourse on Rt. 772
Write or Call: 717-768-8569
If no answer call: 717-768-3568

CUSTOM BUILT WOOD & COAL FIRED BOILERS MADE TO YOUR SPECIFICATIONS


- Welders & cutting torches
- Custom made farm gates, etc.
- Custom built high pressure washers
- Stainless steel welding milker equipment, etc.

MADE TO LAST WITH FIBERGLASS — from FIBERDOME




Fiberdome Storage Bin

Fiberglass is practically dent-proof. Stands up to long periods of hard use. Contents stay fresh because fiberglass absorbs little or no heat. Because there is very little condensation on the inside moisture can't alter the contents of material being stored. Fiberglass is rust resistant. Acids and salts can't hurt it.



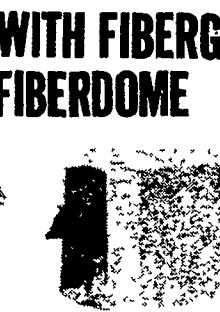
Fiberdome Forage Funnel

Economical to Use • Simple to Install • Easy to Operate • Eliminates Dirty Chutes • Directs Flow of Feed • Saves Wear on Silo Chutes • Adapts to Any Make Silo



Fiberdome Feed Cart

The only all fiberglass feed cart • Buff exterior, white gel-coat interior • 14 bushel capacity (4.93 Hectoliter) • Immune to silage acids, does not rust • Easy to load unload and sanitize • Tricycle gear with one swiveling caster • Length 68 1/2" Width 31 1/2" Hopper depth 23 1/2" Tire Diameter 8"



Fiberdome Calfhutch

Insulation value provides warmth in winter while remaining cool in summer. Hutch may be nested for compact storage. Hutch are easily moved by use of firmly imbedded bolts. Studies show respirator problems, disease and calf mortality are reduced when hutches are properly used.

Fiberdome INC ...made to last
P. O. Box 11 Lake Mills, WI 53551

For more information contact your nearest dealer

PHILLIPS FEED SERVICE INC.
Germansville, PA
215-767-3819
Bath, PA
215-837-6061

THOMAS DUNLAP
Rt. 220, Jersey Shore, PA
717-398-1391

TERRE HILL SILO CO., INC.
Terre Hill, PA
215-445-6736

FARM BUREAU
Mifflinburg, PA
717-966-1047

DEVRIEZE FARM EQUIPMENT
Milanville, PA
717-729-7988

GUTSHALL'S SILO REPAIR WORK
Womelsdorf, PA
717-933-4616

MONT-BUCKS FARM BUREAU CO-OP ASSN.
Souderton, PA
215-723-4355

SOLLENBERGER SILO
Chambersburg, PA
717-264-9588