

TOTAL MANAGEMENT MAKES THE DIFFERENCE!

The AG-BAG Sealed Storage System works with you as part of the total management program which can cut feed costs...improve nutrition...and increase your production and profits.

I want to know more about the Ag-Bag System

Mail To: **AMERICAN AG-BAG INC.**
50 E. 28th Division Highway
Lititz, Pa. 17543

NAME _____

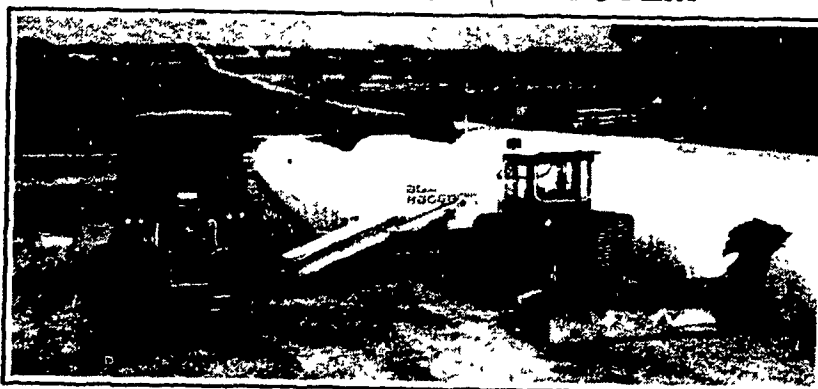
ADDRESS _____

CITY _____

STATE _____ ZIP _____

PHONE _____

AG-BAG THE AFFORDABLE SYSTEM



AMERICAN AG-BAG INC. FORAGE SYSTEMS

50 E. 28th Division Highway
Lititz, Pa. 17543 Rt. 322 & 501 in Brickerville
Lancaster County, 717-627-3665

Exclusive Dealer For Pennsylvania, New Jersey, Maryland, Delaware, Virginia, West Virginia Note: We Need Part Time & Full Time Salesmen for These Areas

AG-BAG INFORMATION MEETING

To Be Held At The Lititz Office
WEDNESDAY, JAN. 20, 1982
at 7:30 P.M.

CUSTOM BAGGING AVAILABLE
CALL COLLECT: 717-627-3665

FEATURES

- ALL HYDRAULIC OPERATION
- SELF POWERED UNITS AVAILABLE
- EASILY TRANSPORTABLE

Leasing & Bank Financing Available

Field Queen Forage Harvesters	SALES, SERVICE & PARTS	Hesston Farm Equipment
-------------------------------	-----------------------------------	------------------------

NOTICE HORSE FARMERS

We have on stock a semi and liquid manure spreader that does a good job of spreading at a very low cost

530 gal. *1495
650 gal. *1560

guaranteed 1 yr.

This is an exceptionally easy pulling spreader. Try mine on trial.

2% Cash Discount

Elam M. Stoltzfus

Box 210 RD 1, Amish Rd.
Kinzers, PA 17535

SPERRY NEW HOLLAND

NEW HOLLAND BARGAIN OF THE MONTH

L-35 Skid Loader, rental unit under 400 hrs. full 12 mo. warranty, includes 84" bucket, full cab w/door, 100 hour checkup.

*9900

M & R EQUIPMENT, INC.
New Park, PA
717-993-2511
717-246-1972

BALDWIN ELECTRIC MOTOR DIVISION, INC.

REPAIR & REWIND - ALL BRANDS
AC & DC MOTORS
Call 717-354-5566
Call 717-354-4651

BALDOR ELECTRIC MOTORS

Warehouse and Factory Service
½ hp. thru 10 hp. 1 ph.
½ hp. thru 100 hp 3 ph.



FARM DUTY MOTORS IN STOCK
P.O. Box 232, Honey Brook,
PA 19344



Leyland 272 Tractor w/Loader, Low hrs.
MF 255 Tractor, Low hrs., like new
JD 3020 Tractor, Late Model, Nice Shape
Case 1070 Tractor, Power Shift, Nice shape
1977 NI 709 Uni System, 1100 actual hours, air, heater, cab. Traded for larger unit.

Plus NI cut/ditchers & mow/ditchers, tractors in stock at Good Prices.

C. & P. FULTZ EQUIPMENT

RD 1 Spring Mills, PA
(814) 422-8807,
Ask for Paul

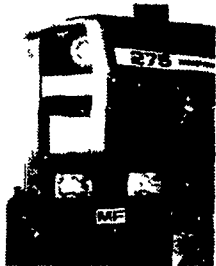
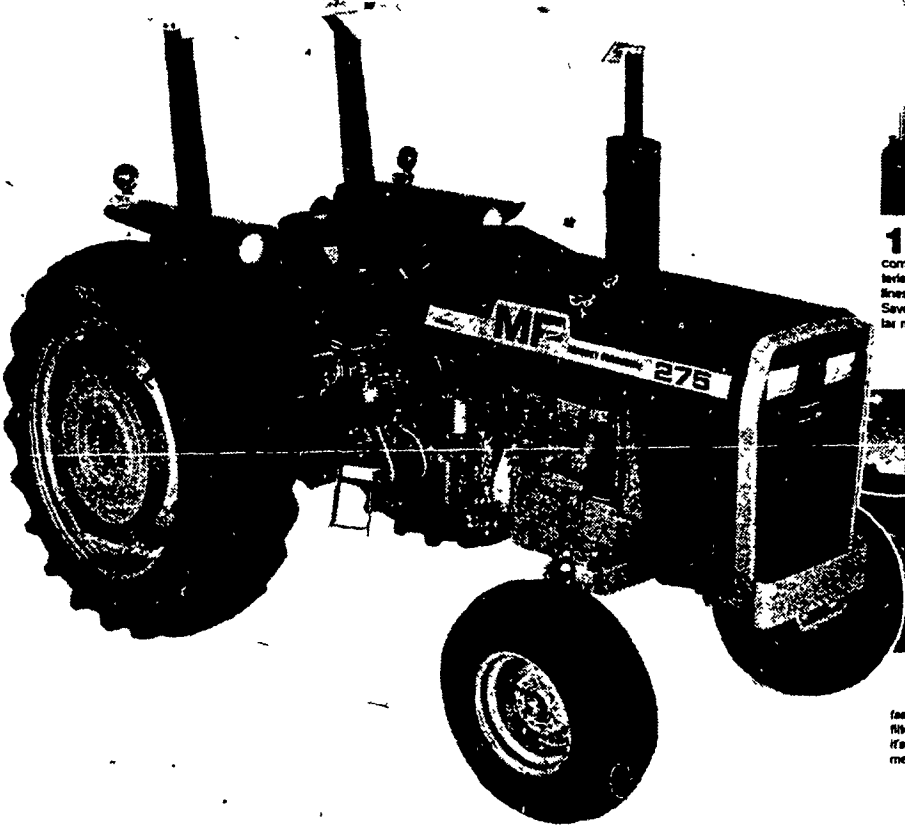


Introducing

THE NEW 200 SERIES TRACTOR

See On Display During Our Sales Days And Open House

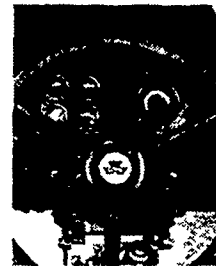
NEW SELLING FEATURES FOR THE 200 SERIES TRACTORS!



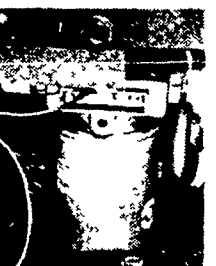
1 The new one-piece grille opens in seconds to service components like the air cleaner, batteries, headlights, oil cooler and oil lines—depending on the model. Saves operator time, promotes regular maintenance.



2 The steering wheel on these new tractors features a deep-dish design. This raises the rim of the wheel about 2 in. (50.8 mm) and puts it in a more comfortable position. It's really noticeable during those extra long days on the tractor seat.



3 New one-piece non-rusting instrument panel has four gauges which have been designed for improved reliability and long trouble-free life. Gauges have stainless steel cases—no more rusting.



4 New spin-on filter makes servicing the auxiliary hydraulic system faster and easier. Just spin the old filter off, spin the new one on—it's that easy. Saves time and messy oil spills.



5 Gear shift levers on larger models have been moved forward, making a larger open area in front of the seat. This makes it much easier to mount or dismount.



6 New push-to-couple hydraulic couplers save your customers time by making hook-ups easier. Operator just plugs the hose into the conveniently placed outlet and he's ready to go.

M.M. WEAVER

LEOLA, PA 17540
PHONE: 717-646-2321



TRACTORS

White 2-85 w/cab
IH 400 D
IH 340, Fast Hitch
MF 1080
IH Cub w/Blade & Plow,
2 yrs. old
JD MT

COMBINES

JD 45 w/2 heads
(3) JD 444 Corn Heads
1980 JD 6620 Side Hill
w/215 Flexhead & 643
Corn Head

HARVESTERS

Gehl 600 w/heads
NH 717 Harvester
Hesston 720 w/heads
NH 770 w/heads

HAY TOOLS

JD 24T Baler
NH 269 Baler
NH 275 Baler

TILLAGE

JD 1710 Mulch Tiller 11' & 13'
JD 2600 5B Spring Reset Plow
JD 345 5 Btm. Plow
IH 700 5x18 Plow
Brillion 12' Roller Harrow
Oliver 12½' Wheel Harrow
Ford 10' Disc

MISCELLANEOUS

JD 46 Loader
JD 1240 Planter
Oliver #5 Picker
Tye No-Fill Drill
IHC 2000 Loader
JD FBB 15x8 Hoe Drill

TOBIAS EQUIPMENT CO., INC.

Halifax, PA 17032
Phone: 717-362-3132