

FARM EQUIPMENT
Gasoline or Diesel Engine Repair Engines mounted on equipment. Lombardini Diesels. Custom made hydraulic units and air compressors Benuei Beiler, 242 Pennsy Rd., New Providence, PA

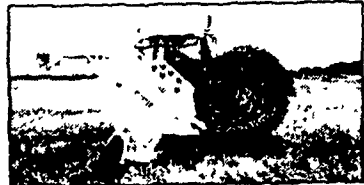
FARM EQUIPMENT
JD Lawn tractor cab, like new, fits 200 series lawn tractors 717-536 3536 Perry Co., PA
Oliver OC3 crawler with loader, good condition, \$1100 Columbia Co. 717-458 6831

FARM EQUIPMENT
JD 500 wheel loader backhoe \$4500
DENNIS M. MILLER EQUIPMENT
Rt. 22 Grantville, PA 717-838-1888 anytime 717-469 0937 daily

HAYBUSTER BIG BALE BUSTER THE SENSIBLE SOLUTION FOR FIELD OR FEED BUNK FEEDING

a new idea to save you time and money

Just lower the fork (hydraulic operation), back it under the bale and the bale is lifted into the shredder.



Use the BALE BUSTER for "bedding" - inside or outside. Drop adjustable deflector down for range feeding. Spreads bale in an easy-to-feed windrow.



Shredding big bales into feed bunks is an easy job for the BALE BUSTER. Flow control valve regulates grinding for coarse or fine feed... SENSIBLE!



Shred big bales right in the field for range feeding. The BALE BUSTER lays ground hay evenly in easy-to-feed windrows - no tramping or hogging by cattle... SENSIBLE!
A one man operation, simply back up to the bale... pick it up with the fork... tilt it into the BALE BUSTER... all in a few seconds. You're ready to shred hay into feed bunks or field windrows... SENSIBLE!
(Bunk feeder attachment optional)

to the bale... pick it up with the fork... tilt it into the BALE BUSTER... all in a few seconds. You're ready to shred hay into feed bunks or field windrows... SENSIBLE!
(Bunk feeder attachment optional)

RED WING FARMS
Fleetwood, Pa.
215-944-0791 or 215-944-9583
TRIPLE H EQUIPMENT
Peach Bottom, Pa.
717-548-2640 or 717-548-2094

HAYBUSTER

Box 1950
Jonestown, ND 58301
Phone 701 252 4601



LOVE... FAITH...
PEACE

Of these three eternal gifts the greatest is Love. At this glorious season we hope this most precious gift will be yours.

From All Of Us At Norman D. Clark & Son...
• Kenneth Kent • Robert Peterson
• James Gibbons • Barry Dougherty
• Wilson Dougherty • Rufus Lauver
• Mr. & Mrs. Norman D. Clark & Family

NORMAN D. CLARK & SON
Honey Grove, PA 17035 - Phone 717-734-3682
Located 14 Miles South Port Royal on Rt 75

TRIPLE H EQUIPMENT

Peach Bottom, Pa.
717-548-2640 or 717-548-2094



NEW VERMEER EQUIP.

- 2-6050 Dsl. Tractors
- 4-504F baler, only 1 left
- 1-5500 Dsl. Tractor
- 1-MC 9 mower-cond., \$6470
- 3-F100 bale feeders, \$2495
- 1-500 gpm irrigation system, mobile equip., soft hose, 1/2 price - \$7400

NEW HAYBUSTER EQUIP.

- 2-Haybuster model no. 1068 no till semi-mtd. grain drills
- 1-Tye 3 pt. no till drill
- 1-Bale Buster for mulching lg. round bales

MISC. NEW EQUIP.

- 2-Kelly log splitters engine drive
- 2-600 lb. fert. spreaders, \$320
- 1-1450 lb. fert. spreader, \$780

LAHMAN SKID STEER LOADERS

- 1-30 hp, 2 buckets, \$8000
- 1-23 hp, 2 buckets, \$6200

NEW SHIPMENT VICON EQ.

- 1-PTO tedder - rake
- 3-5 wheel 3 pt. hitch rakes
- 1-6 wheel trailer rake
- 2-8 wheel - V-rakes
- 2-2400 lb. fert. spreaders
- 2-1900 lb. fert. spreader
- 3-950 lbs. fert. spreader
- 1-600 lb. fert. spreader
- 1-8' 3 pt. hitch disc mower

USED & DEMO EQUIP.

- 1-Vicon 15' power harrow, demo
- 2-Vicon 8' mower-conditioners, used
- 1-Vicon 8' mower-conditioner, demo
- 1-Lely tedder rake, used
- 1-Badger manure souper, 10' demo
- 2-used NH balers
- 1-SP Hesston windrower
- 1-605D Vermeer Baler
- 1-605E Vermeer Baler
- 2-540F Vermeer Baler
- 1-#10 Hesston Stackhard
- 1-Model 340 JD Disc Harrow

* STAR STUDDED SALE *

NEW EQUIPMENT:

- AC 5020 Dsl. (25 hp) Tractor
- AC 5020 Dsl. FWD (25 hp.) Tractor
- AC 5050 Dsl. FWD (50 hp) Tractor & Loader
- AC 5050 Dsl. (50 hp) Tractor
- AC 6060 Dsl. (60 hp) Tractor
- AC 6080 Dsl. (80 hp) Tractor
- AC 7010 Dsl. (106 hp) Tractor & Cab, PS
- AC 2600 (19'10") Fold up Disc Harrow
- AC 1200 (14') Mounted Cultivator
- AC 770 Corn Planter 4 Row, Air, Dry
- AC 333 Corn Planter 4 Row, Plate, Dry
- AC 2313 Disc Harrow 13', 22" Disc
- AC 83 Mtd. Plow 3 Bott, 16"
- N.I. 323 1 Row Corn Picker
- N.I. 324 WR 2 row Picker & 12 Roll Husker
- N.I. 279 Cut-Ditioner
- N.I. 106 Fert. Spreader
- N.I. 107 Fert. Spreader
- N.I. 621 Forage Blower
- Hesston 1090 Mower Cond.
- G.T. 370 Grain Dryer
- G.T. 580 Grain Dryer
- Danuser MS-1 H.D. Log Splitter
- Haban Corn Sheller, 3 pt. Hitch
- Woods 60 Pull type Mower
- Badger 5800L 1500 gal. Manure tank
- Brillion 8'9" Soil Builder
- Brillion 16' STS Fold up Harrow
- Grumm Model "B" Ground Drive Tedder
- Grumm Model "C" PTO Tedder

	List	Asking
AC 5020 Dsl. (25 hp) Tractor	\$7,538.00	\$5,275.00
AC 5020 Dsl. FWD (25 hp.) Tractor	8,319.00	5,860.00
AC 5050 Dsl. FWD (50 hp) Tractor & Loader	23,626.00	15,990.00
AC 5050 Dsl. (50 hp) Tractor	16,143.00	9,995.00
AC 6060 Dsl. (60 hp) Tractor	18,874.00	12,900.00
AC 6080 Dsl. (80 hp) Tractor	23,756.00	15,500.00
AC 7010 Dsl. (106 hp) Tractor & Cab, PS	39,625.00	23,900.00
AC 2600 (19'10") Fold up Disc Harrow	10,859.00	6,700.00
AC 1200 (14') Mounted Cultivator	1,728.00	1,295.00
AC 770 Corn Planter 4 Row, Air, Dry	5,800.00	4,100.00
AC 333 Corn Planter 4 Row, Plate, Dry	8,420.00	6,995.00
AC 2313 Disc Harrow 13', 22" Disc	3,620.00	2,650.00
AC 83 Mtd. Plow 3 Bott, 16"	1,637.00	1,100.00
N.I. 323 1 Row Corn Picker	7167.40	5,500.00
N.I. 324 WR 2 row Picker & 12 Roll Husker	13,357.00	8,995.00
N.I. 279 Cut-Ditioner	6,313.00	4,600.00
N.I. 106 Fert. Spreader	645.00	495.00
N.I. 107 Fert. Spreader	609.00	535.00
N.I. 621 Forage Blower	2,140.00	1,620.00
Hesston 1090 Mower Cond.	6,430.00	4,950.00
G.T. 370 Grain Dryer	8,650.00	6,750.00
G.T. 580 Grain Dryer	14,243.00	12,500.00
Danuser MS-1 H.D. Log Splitter	735.00	550.00
Haban Corn Sheller, 3 pt. Hitch	1,984.00	1,495.00
Woods 60 Pull type Mower	1,243.00	960.00
Badger 5800L 1500 gal. Manure tank	6,875.00	4,930.00
Brillion 8'9" Soil Builder	4,995.00	4,120.00
Brillion 16' STS Fold up Harrow	1,952.00	1,590.00
Grumm Model "B" Ground Drive Tedder	1,440.00	1,100.00
Grumm Model "C" PTO Tedder	1,540.00	1,375.00

USED EQUIPMENT:

- AC 7000 Dsl. (106 hp) w/Cab Tractor
- AC 175 Dsl. (62 hp) Tractor
- IH 2606 Tractor Dsl. (53 hp)
- Case 400 Tractor
- Ford 901 Tractor
- IH 574 Tractor
- MF 410 Combine w/Heads
- MF 510 Combine w/Heads
- N.I. 704 Uni Power Unit & Cab
- J.D. 7700 Combine w/Heads (FEB)
- I.H. 715 Combine w/Heads
- Sunflower GS 14- Offset Disc
- Sunflower GS-16' Offset Disc
- N.I. 325 N.R. 2 row Picker & 12 Roll Husker
- N.I. 319 Mtd. Picker Sheller
- NI 720 Corn Header
- Hesston PT-10 Windrower
- JD 24T Baler & Thrower
- NH 460 Windrower
- IH 400 Cyclo 6 Row Planter
- JD 3800 Forage Harvester w/Heads

	Now
AC 7000 Dsl. (106 hp) w/Cab Tractor	15,900.00
AC 175 Dsl. (62 hp) Tractor	8,900.00
IH 2606 Tractor Dsl. (53 hp)	3,400.00
Case 400 Tractor	995.00
Ford 901 Tractor	1,800.00
IH 574 Tractor	5,200.00
MF 410 Combine w/Heads	10,900.00
MF 510 Combine w/Heads	18,995.00
N.I. 704 Uni Power Unit & Cab	14,900.00
J.D. 7700 Combine w/Heads (FEB)	32,000.00
I.H. 715 Combine w/Heads	15,000.00
Sunflower GS 14- Offset Disc	4,900.00
Sunflower GS-16' Offset Disc	4,900.00
N.I. 325 N.R. 2 row Picker & 12 Roll Husker	4,995.00
N.I. 319 Mtd. Picker Sheller	2,900.00
NI 720 Corn Header	400.00
Hesston PT-10 Windrower	1,500.00
JD 24T Baler & Thrower	1,600.00
NH 460 Windrower	880.00
IH 400 Cyclo 6 Row Planter	3,900.00
JD 3800 Forage Harvester w/Heads	4,500.00

"Conditions of Sale"

- 1- Prices F.O.B. Dealership
- 2- Some Prices Include Rebates
- 3- Trade-ins Considered.
- 4- Cash or Retail contract.
- 5- Location - Intersecton Rts. 147 & 225

MECKLEY'S GARAGE

717-758-3915
Herndon, PA