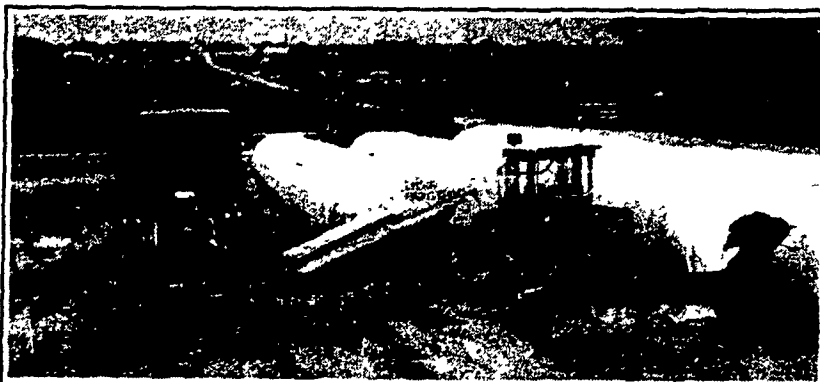


FARM EQUIPMENT FARM EQUIPMENT FARM EQUIPMENT FARM EQUIPMENT FARM EQUIPMENT FARM EQUIPMENT FARM EQUIPMENT

**TOTAL MANAGEMENT
MAKES THE
DIFFERENCE!**

The AG-BAG Sealed Storage System works with you as part of the total management program which can cut feed costs...improve nutrition...and increase your production and profits.

AG-BAG THE AFFORDABLE SYSTEM



**AMERICAN AG-BAG INC.
FORAGE SYSTEMS**

50 E. 28th Division Highway
Lititz, Pa. 17543 Rt. 322 & 501 in Brickerville
Lancaster County, 717-627-3665

Exclusive Dealer For Pennsylvania, New Jersey, Maryland, Delaware, Virginia, West Virginia Note: We Need Part Time & Full Time Salesmen for These Areas

AG-BAG INFORMATION MEETING

To Be Held At The Lititz Office
WEDNESDAY, JAN. 20, 1982
at 7:30 P.M.

**CUSTOM BAGGING AVAILABLE
CALL COLLECT: 717-627-3665**

FEATURES

- ALL HYDRAULIC OPERATION
- SELF POWERED UNITS AVAILABLE
- EASILY TRANSPORTABLE

Leasing & Bank Financing Available

Field Queen Forage Harvesters **SALES, SERVICE & PARTS** Hesston Farm Equipment

I want to know more about the Ag-Bag System

Mail To: **AMERICAN AG-BAG INC.**
50 E. 28th Division Highway
Lititz, Pa. 17543

NAME _____

ADDRESS _____

CITY _____

STATE _____ ZIP _____

PHONE _____

**USED
GORMAN-RUPP
PUMP**

For liquid manure and waste water, pump only or w/gas engine

ECCO, INC.

4021 N. 6th St.
Harrisburg, PA 17110
717-238-9423

HIGH PURITY, HIGH CALCIUM LIMING material available. Dried typical analysis: 96.6 percent calcium carbonate, less than 1 percent magnesium oxide, granulated, dust free, and easy to handle. Only \$3.75 per ton loaded on your truck.

Contact
Sundance Agri-Products
RD 3, Box 1368,
Bangor, PA 18013
215-588-8150

GOOD USED EQUIPMENT

- F-1256 diesel IH 570 manure spreader
- Used Long mod. 910 diesel tractor, 710 hrs., very good cond. \$7400
- Bolens model HT-20 hp w/mtd. loader w/front blade & rotary mower, good cond.
- Oliver 770 diesel tractor, tricycle front end, good cond.
- IH 3 btm. semi-mtd. fast hitch plow
- IH #710 4 F auto reset plow
- Good used lawn tractors.
- 55 trailing chisel plow
- 2 Farmall M
- One Massey Harris Model 33

IH 1440 axial flow combine w/1150 hours, excellent condition.
IN 71! SOLD



AMCO NEW IDEA

**L.L. ECKROTH
FARM EQUIPMENT, INC.**
RD2, New Ringgold, PA
717-943-2367

TORQUE AMPLIFIER, CLUTCH & TRANSMISSION PARTS & SERVICE

Rebuilt TA assemblies in stock for IH tractors, New and Rebuilt; Water Pumps, Dynalife clutches, pressure plates, and PTO drive shafts (are spline fitted into pressure plate; IN STOCK for tractors A, B, C through 1586, also for most models of IH combines

Complete TA assemblies for 706-1586 are priced at \$550 and come with a Dana Co. Heavy Duty Sprag instead of the usual IH sprag. The Dana sprag is guaranteed for 2 yrs. against failure. Sprag kits (includes sprag gear, Dana sprag & piston carrier) and all items for rebuilding your own TA assembly are available to qualified persons. Ramps and carriers for older style TA's (as in SMTA-340-560) are priced at \$150 each and carry a 90 day guarantee. We have parts needed for TA repair in stock at prices which will save you money. Shop is available for complete TA installation or split the tractor yourself and send the center housing to us. Complete rebuilt center housings available on exchange basis or for installation in tractors which did not have TA from factory.

Selling parts from the following:
Please have part no. when calling if possible.

Quality Reconditioned Engine Parts

We have blocks, cranks, and heads in stock from tractors we have salvaged which have been reconditioned by the most precision-oriented machine shop in the county. We do not sell weld-repaired parts. If you want new quality parts at a used parts price, we can help you. Parts are sold w/a 90 day replacement warranty.

Tractors - IH 1066, 806, 706G, 616D, 450D, 460, 340, 300, M, SM, W-6 & A JD 520, 2020D, 60, A, B Oliver 1555, G-wfront, year round cab.

Combines - IH 203 JD 30 & 55, MF 35, Uni- 701, 702 & 705 tractors, also 710 combines & 727 & 737 huskers MF 510 G Quick Tach Corn Heads - IH 429 WN, 430, 228, 227, 328 WN

Parts shipped direct thru UPS & Parcel Post at No Extra Charge To Retail Customers

J. EDWARD LEAMAN
RD #1, Box 474 Willow St., PA 17584
717-464-2874

*** STAR STUDDED SALE ***

NEW EQUIPMENT:

- AC 5020 Dsl. (25 hp) Tractor
- AC 5020 Dsl. FWD (25 hp.) Tractor
- AC 5050 Dsl. FWD (50 hp) Tractor & Loader
- AC 5050 Dsl. (50 hp) Tractor
- AC 6060 Dsl. (60 hp) Tractor
- AC 6080 Dsl. (80 hp) Tractor
- AC 7010 Dsl. (106 hp) Tractor & Cab, PS
- AC 2600 (19'10") Fold up Disc Harrow
- AC 1200 (14') Mounted Cultivator
- AC 770 Corn Planter 4 Row, Air, Dry
- AC 333 Corn Planter 4 Row, Plate, Dry
- AC 2313 Disc Harrow 13', 22" Disc
- AC 83 Mtd. Plow 3 Bott, 16"
- N.I. 323 1 Row Corn Picker
- N.I. 324 WR 2 row Picker & 12 Roll Husker
- N.I. 279 Cut-Ditioner
- N.I. 106 Fert. Spreader
- N.I. 107 Fert. Spreader
- N.I. 621 Forage Blower
- Hesston 1090 Mower Cond.
- G.T. 370 Grain Dryer
- G.T. 580 Grain Dryer
- Danuser MS-1 H.D. Log Splitter
- Haban Corn Sheller, 3 pt. Hitch
- Woods 60 Pull type Mower
- Badger 5800L 1500 gal. Manure tank
- Brillion 8'9" Soil Builder
- Brillion 16' STS Fold up Harrow
- Grimm Model "B" Ground Drive Tedder
- Grimm Model "C" PTO Tedder

List	Asking
\$7,538.00	\$5,275.00
8,319.00	5,860.00
23,626.00	15,990.00
16,143.00	9,995.00
18,874.00	12,900.00
23,756.00	15,500.00
39,625.00	23,900.00
10,859.00	6,700.00
1,728.00	1,295.00
5,800.00	4,100.00
8,420.00	6,995.00
3,620.00	2,650.00
1,637.00	1,100.00
7167.40	5,500.00
13,357.00	8,995.00
6,313.00	4,600.00
645.00	495.00
609.00	535.00
2,140.00	1,620.00
6,430.00	4,950.00
8,650.00	6,750.00
14,243.00	12,500.00
735.00	550.00
1,984.00	1,495.00
1,243.00	960.00
6,875.00	4,930.00
4,995.00	4,120.00
1,952.00	1,590.00
1,440.00	1,100.00
1,540.00	1,375.00

USED EQUIPMENT:

- AC 7000 Dsl. (106 hp) w/Cab Tractor
- AC 175 Dsl. (62 hp) Tractor
- IH 2606 Tractor Dsl. (53 hp)
- Case 400 Tractor
- Ford 901 Tractor
- IH 574 Tractor
- MF 410 Combine w/Heads
- MF 510 Combine w/Heads
- N.I. 704 Uni Power Unit & Cab
- J.D. 7700 Combine w/Heads (FEB)
- I.H. 715 Combine w/Heads
- Sunflower GS 14- Offset Disc
- Sunflower GS-16' Offset Disc
- N.I. 325 N.R. 2 row Picker & 12 Roll Husker
- N.I. 319 Mtd. Picker Sheller
- NI 720 Corn Header
- Hesston PT-10 Windrower
- JD 24T Baler & Thrower
- NH 460 Windrower
- IH 400 Cyclo 6 Row Planter
- JD 3800 Forage Harvester w/Heads

Now
15,900.00
8,900.00
3,400.00
995.00
1,800.00
5,200.00
10,900.00
18,995.00
14,900.00
32,000.00
15,000.00
4,900.00
4,900.00
4,995.00
2,900.00
400.00
1,500.00
1,600.00
880.00
3,900.00
4,500.00

"Conditions of Sale"

- 1- Prices F.O.B. Dealership
- 2- Some Prices Include Rebates
- 3- Trade-ins Considered.
- 4- Cash or Retail contract.
- 5- Location - Intersecton Rts. 147 & 225

**MECKLEY'S
GARAGE**

717-758-3915
Herndon, PA